

10-30-51-04-000

10-30-51-52-001

10-30-51-58-001

## ALAN DONAKER SURVEYING

**Alan Donaker, P.S.**

19849 TR 383

Walhonding, OH 43843

Fax: (740) 327-1083

Phone: (740) 327-7001

Being 113.245 acres more or less, 76.644 acres in Lot 4, 36.377 acres in Lot 5, 0.118 acres in Lot 7 and 0.106 acres in Lot 8, Third Quarter, Township 3 North, Range 8 West, United States Military Lands, in the Township of Cass, in the County of Muskingum, in the State of Ohio, conveyed to Jean D. Jackson, DR 819-145 (part), Parcel No. 10-30-51-04-000 (all, 76.644 acres), Parcel No. 10-30-51-11-000 (all, 35.148 acres), Parcel No. 10-30-51-12-000 (all, 1.229 acres), Parcel No. 10-30-51-52-000 (part, 0.118 acres) and Parcel No. 10-30-51-58-000 (part, 0.106 acres) and more particularly described as follows:

Commencing at a  $\frac{3}{8}$ " rebar found at the Southeast corner of Lot 4, said rebar being the TRUE POINT OF BEGINNING;

thence, with the South line of Lot 3, the following 2 courses;

1. thence, S.  $87^{\circ} 51' 31''$  E. a distance of 90.00' to a  $\frac{3}{8}$ " rebar found;
2. thence, S.  $87^{\circ} 51' 31''$  E. a distance of 28.40' to a point in the centerline of Redbud Road, Township Road 77;

thence, with the centerline of Redbud Road, Township Road 77 and through the property of Jean D. Jackson, DR 819-145, the following 5 courses:

1. thence, S.  $52^{\circ} 40' 54''$  W. a distance of 27.71' to a point;
2. thence, S.  $60^{\circ} 04' 57''$  W. a distance of 41.99' to a point;
3. thence, S.  $64^{\circ} 43' 05''$  W. a distance of 55.24' to a point;
4. thence, S.  $66^{\circ} 44' 44''$  W. a distance of 58.03' to a point;
5. thence, S.  $67^{\circ} 48' 23''$  W. a distance of 21.99' to a point;

thence, through the property of Jean D. Jackson, DR 819-145, the following 3 courses:

1. thence, N.  $02^{\circ} 10' 35''$  E. a distance of 25.00' to a  $\frac{3}{8}$ " rebar set;
2. thence, N.  $02^{\circ} 10' 35''$  E. a distance of 74.35' to a  $\frac{3}{8}$ " rebar set;
3. thence, N.  $87^{\circ} 47' 40''$  W. a distance of 2226.31' to a  $\frac{3}{8}$ " rebar of record;

thence, with the property line of William H. and Ada Marie Wagner, DR 510-291, N.  $88^{\circ} 38' 31''$  W. a distance of 1655.20 to a  $\frac{3}{8}$ " rebar of record;

thence, with the property line of Thelma P. Untied, DR 2345-3, the following 3 courses:

1. thence, N.  $03^{\circ} 22' 10''$  E. a distance of 264.00 to a  $\frac{3}{8}$ " rebar of record;
2. thence, N.  $88^{\circ} 39' 34''$  W. a distance of 60.00 to a  $\frac{3}{8}$ " rebar of record;
3. thence, N.  $88^{\circ} 39' 34''$  W. a distance of 31.60 to a point in the centerline of Narrows Road, County Road 76;

thence, with the centerline of Narrows Road, County Road 76, the following 17 courses:

1. thence, N.  $10^{\circ} 23' 05''$  W. a distance of 23.18' to a point;
2. thence, N.  $15^{\circ} 35' 27''$  W. a distance of 71.62' to a point;
3. thence, N.  $11^{\circ} 58' 14''$  W. a distance of 55.36' to a point;
4. thence, N.  $03^{\circ} 03' 06''$  W. a distance of 56.75' to a point;
5. thence, N.  $10^{\circ} 21' 31''$  E. a distance of 57.18' to a point;
6. thence, N.  $21^{\circ} 13' 39''$  E. a distance of 65.53' to a point;

10-30-51-04-000 A  
10-30-51-52-001 A  
10-30-51-58-001 A

7. thence, N. 27° 23' 07" E. a distance of 92.85' to a point;
8. thence, N. 29° 13' 58" E. a distance of 113.22' to a point;
9. thence, N. 32° 31' 31" E. a distance of 58.58' to a point;
10. thence, N. 38° 10' 00" E. a distance of 56.85' to a point;
11. thence, N. 45° 15' 37" E. a distance of 61.41' to a point;
12. thence, N. 50° 23' 55" E. a distance of 43.72' to a point;
13. thence, N. 54° 51' 40" E. a distance of 56.62' to a point;
14. thence, N. 59° 09' 40" E. a distance of 61.90' to a point;
15. thence, N. 63° 46' 19" E. a distance of 321.72' to a point;
16. thence, N. 62° 41' 16" E. a distance of 178.04' to a point;
17. thence, N. 61° 37' 05" E. a distance of 92.76' to a point;

thence, with the property line of Sharon K. Hedges, DR 2219-776, the following 5 courses:

1. thence, S. 88° 00' 51" E. a distance of 71.58' to a 3/8" rebar of record;
2. thence, S. 88° 00' 51" E. a distance of 465.00' to a 3/8" rebar of record;
3. thence, S. 59° 00' 53" E. a distance of 23.76' to a 3/8" rebar of record;
4. thence, S. 78° 00' 51" E. a distance of 36.96' to a 3/8" rebar of record;
5. thence, N. 01° 59' 09" E. a distance of 17.94' to a 3/8" rebar of record;

thence, with the property lines of Sharon K. Hedges, DR 2219-776 and Scott A. and James D. Moore, Trustees, DR 2347-950, S. 88° 00' 56" E. a distance of 2597.85' to a 3/8" rebar of record;

thence, with the property line of Scott A. and James Douglas Moore, DR 1029-281, S. 01° 47' 41" W. a distance of 1136.16' to a 3/8" rebar found;

thence, with the property line of Trustees of Cass Township, DR 76-246, S. 01° 47' 41" W. a distance of 145.50' to the TRUE POINT OF BEGINNING, containing 113.245 acres, more or less, including public road right-of-way and is subject to all easements, rights-of-way, or restrictions, whether recorded or implied.

Bearings are based on DR 1029-281 and are for angular calculations only.

All 3/8" rebars set are 30" long with plastic cap marked "AMD 8050".

Pertinent Documents: Tax Map and all Deeds shown

Surveys by: Denis P. Swierz, Stephen M. Bowman, Richard Max Graves, John R. Marshall, Alan Donaker

Description and plat by Alan Donaker, Professional Surveyor, #8050, from a survey of the premises on April 14, in the year of our Lord Two Thousand Six and February 16, in the year of our Lord Two Thousand Fifteen.

**OFFICE COPY** 2/16/15  
**NOT RECORDABLE**



APPROVED  
MUSKINGUM COUNTY  
PLANNING COMMISSION DIRECTOR  
*[Signature]*  
Date 2/22/15 Fee Paid

DESCRIPTION APPROVED  
By: *[Signature]* 2/22/15

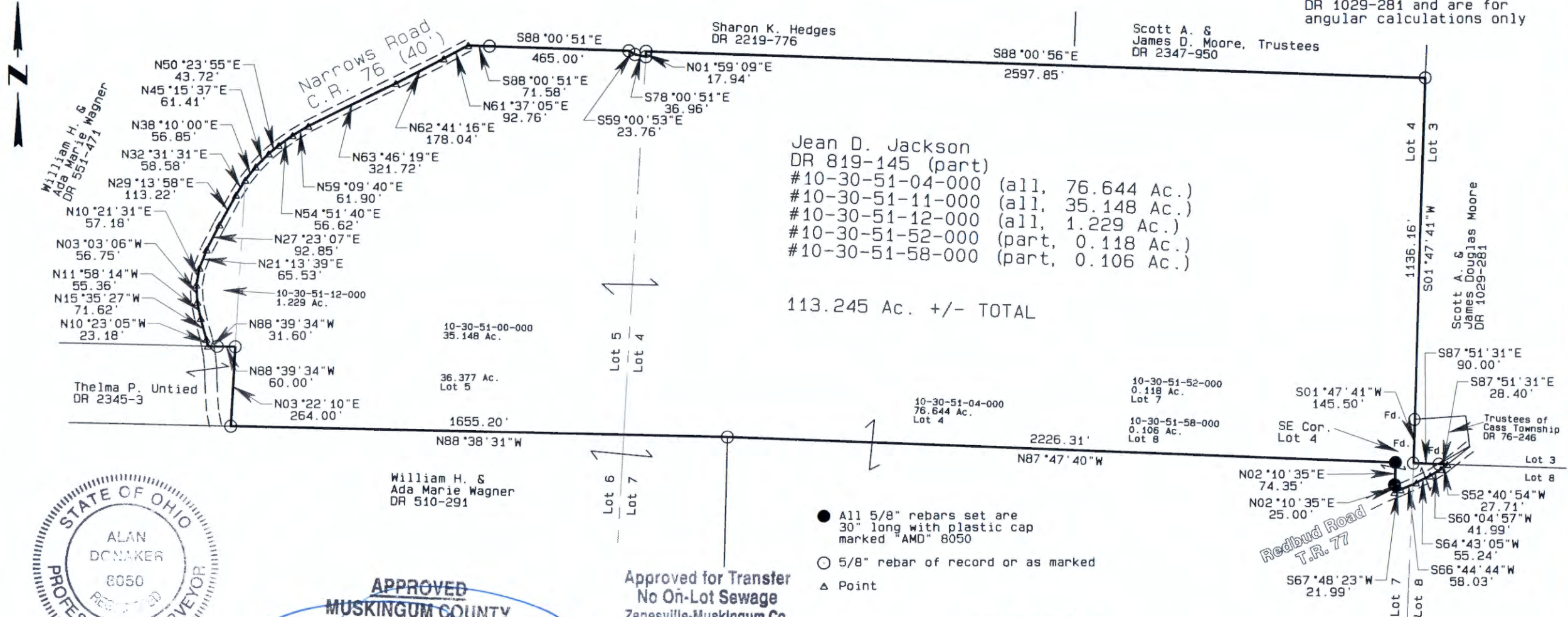
This property is subject to all easements, rights-of-way or restrictions, whether recorded or implied.

**ALAN DONAKER SURVEYING**  
 19849 TR 383  
 Walhonding, OH 43843  
 Telephone: (740) 327-7001  
 Fax: (740) 327-1083

Pertinent Documents: Tax Map  
 All Deeds and Plats as shown

Surveys by: Alan Donaker,  
 Dennis P. Swierz, Stephen M.  
 Bowman, Max Graves, John R.  
 Marshall

Bearings are based on  
 DR 1029-281 and are for  
 angular calculations only



Jean D. Jackson  
 DR 819-145 (part)  
 #10-30-51-04-000 (all, 76.644 Ac.)  
 #10-30-51-11-000 (all, 35.148 Ac.)  
 #10-30-51-12-000 (all, 1.229 Ac.)  
 #10-30-51-52-000 (part, 0.118 Ac.)  
 #10-30-51-58-000 (part, 0.106 Ac.)

113.245 Ac. +/- TOTAL



**APPROVED**  
 MUSKINGUM COUNTY  
 PLANNING COMMISSION DIRECTOR

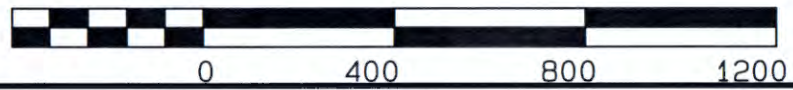
Approved for Transfer  
 No On-Lot Sewage  
 Zanesville-Muskingum Co.  
 Health Department

- All 5/8" rebars set are 30" long with plastic cap marked "AMD" 8050
- 5/8" rebar of record or as marked
- △ Point

**DESCRIPTION APPROVED**  
 By: *[Signature]* 2/26/2015

Date: 2/27/15  
 Fee Paid: \_\_\_\_\_

GRAPHIC SCALE 1"=400'



Jean D. Jackson  
 DR 819-145  
 113.245 Ac.  
 Lots 4, 5, 7 & 8, Third Qtr.  
 T3N, R8W  
 United States Military Lands  
 Cass Township  
 Muskingum County, Ohio  
 Date: April 14, 2006 and  
 February 16, 2015

**OFFICE COPY**  
**NOT RECORDABLE**  
 I, Alan Donaker, P.S. 8050, hereby certify this plat to represent a boundary survey pursuant to Chapter 4733.37 Ohio Administrative Code and to be correct to the best of my knowledge and belief.