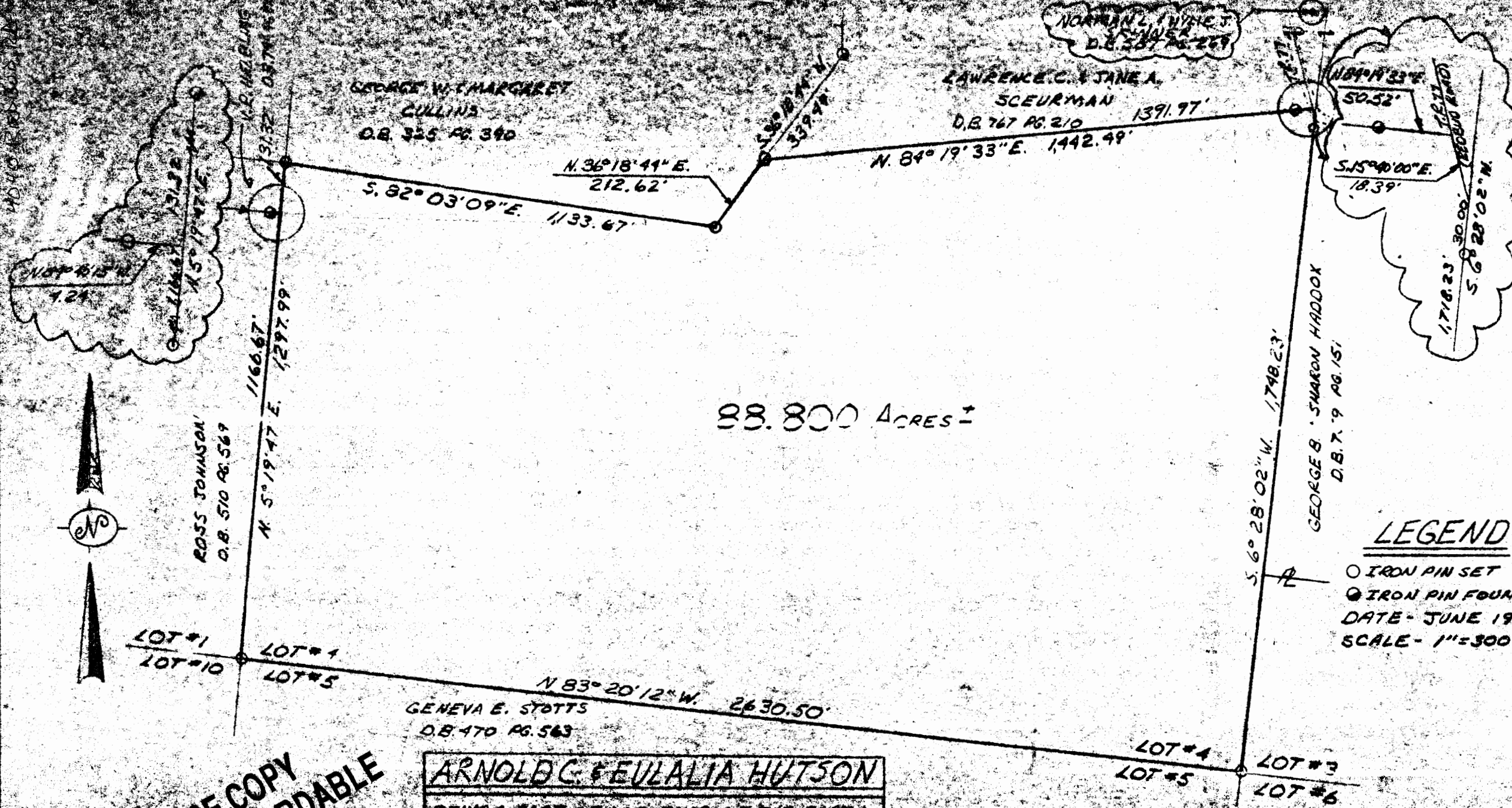


0-54-41-16



88.800 ACRES ±

NORMAN L. FINNEY  
S. W. FINNER  
D.B. 387 PG. 269

LAWRENCE C. & JANE A.  
SCEURMAN  
D.B. 767 PG. 210 1391.97'

GEORGE W. & MARGARET  
CULLINS  
D.B. 325 PG. 340

ROSS JOHNSON  
D.B. 510 PG. 569

GENEVA E. STOTTS  
D.B. 470 PG. 563

GEORGE B. & SHARON HADDOX  
D.B. 7.9 PG. 151

**ARNOLD G. & EULALIA HUTSON**

BEING A PART OF LOT FOUR OF THE FORTH QUARTER OF TOWNSHIP 3 NORTH RANGE 8 WEST, UNITED STATES MILITARY LANDS, CASS TOWNSHIP, MCKINNEY COUNTY, OKLA.

LEGEND

- IRON PIN SET
- IRON PIN FOUND
- DATE - JUNE 1978
- SCALE - 1" = 300'

**Buckeye Land Surveying, Inc.**

George W. Johnson 215 South Park Street, N. W. Columbus, Ohio 43201 (614) 672-4800  
Professional Land Surveyor  
Service to every acre that matters

**OFFICE COPY  
NOT RECORDBABLE**

1978 JUN 15 10 52 AM  
SURVEY BY  
#9232

10-10-24-41-16