

727 Cambridge Road
Coshocton, Ohio 43812



EARL R. DONAKER
PROFESSIONAL SURVEYOR

1-800-842-3264
(614) 623-0993

THOMAS M. STAYNER
10-10-34-41-37-000 (ALL)
71.954 Ac. +/-

Being (71.954 acres, more or less, all of parcel 10-10-34-41-37-000), (73.954 acres less 2.000 acres, this metes and bounds description encompasses parcel 10-10-34-41-37-002, which is 2.000 acres as described in 1011/550 and is hereby excepted from this description), in farm lot 13, in the fourth quarter of township 3 north, range 8 west, United States Military Lands, and in the township of Cass, in the county of Muskingum, in the state of Ohio and more particularly described as follows:

Beginning at a 5/8" steel pin set at the northeast corner of farm lot 13, said 5/8" steel pin set being the TRUE POINT OF BEGINNING;

thence, with the west line of farm lot 12 and the east line of farm lot 13, S.01°38'28"W. 1520.52' to an axle found;

thence, with the property line of Lawrence Reilly, 623/198, the following 4 courses;

1. thence, S.69°25'37"W. 352.54' to an axle found;
2. thence, S.20°49'53"E. 334.50' to an axle found;
3. thence, N.69°44'11"E. 67.03' to an axle found;
4. thence, N.52°00'05"E. 185.63' to a point on the east line of farm lot 13;

thence, with the west line of farm lot 12 and the east line of farm lot 13, S.01°47'05"W. 83.33' to a point in the centerline of S.R. 60;

thence, with the centerline of S.R. 60 the following 6 courses:

1. thence, S.67°39'03"W. 270.79' to a point;
2. thence, S.69°45'17"W. 137.01' to a point;
3. thence, S.69°40'44"W. 32.18' to a point;
4. thence, S.69°50'25"W. 385.74' to a point;
5. thence, S.61°00'51"W. 227.64' to a point;
6. thence, S.44°25'20"W. 374.68' to a point;

thence, with the property line of Warren R. & Rebecca J. Dotson, 624/232, the following 2 courses:

1. thence, N.02°50'02"W. 495.78' to a point in a cherry tree;
2. thence, N.81°12'56"W. 256.50' to a 3/4" iron pipe found;

thence, with the property line of William D. & Colleen M. Drwig, 565/724, N.00°57'35"E. 2113.85' to a stone found;

thence, with the south line of farm lot 6 and the north line of farm lot 13, S.87°14'46"E. 1525.08' to the TRUE POINT OF BEGINNING, containing (71.954 acres, more or less, all of parcel 10-10-34-41-37-000), (73.954 acres less 2.000 acres, this metes and bounds description encompasses parcel 10-10-34-41-37-002, which is 2.000 acres as described in 1011/550 and is hereby excepted from this description), including public road right-of-way and is subject to all easements, rights-of-way, or restrictions, whether recorded or implied.

Bearings are based on D.B. 995, pg. 594.
All 5/8" steel pins set are 30" long.

Prior deeds: 573/621 and 882/356

Pertinent documents: tax map; Deeds, 882/356, 1011/550, 623/198, 995/594, 965/228, 934/34, 937/157, 887/157, 624/232, 565/724, 698/80, 809/20, 473/576; Surveys by; W.J. Biederbach, George Max Graves, and Harold W. Hitchens.

Description and plat by Earl R. Donaker, Professional Surveyor, #7142, from a survey of the premises in the month of October, in the year of our Lord one thousand nine hundred and nintey.

DESCRIPTION APPROVED
FOR AUDITOR'S TRANSFER

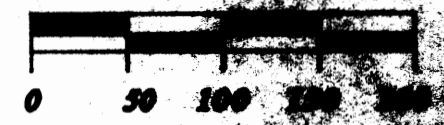
BY J. J. Hambl
10-9-90

THIS PROPERTY IS SUBJECT TO ALL EASEMENTS, RIGHTS-OF-WAY, OR RESTRICTIONS, WHETHER RECORDED OR IMPLIED.

727 Cambridge Road
Coshocton, Ohio 43812
EARL R. DONAKER
PROFESSIONAL SURVEYOR

tel: (614) 623-0993
1-800-842-3264

10-34-41-37
2295 FRAZERS BURG RD



SCALE: 1"=100'

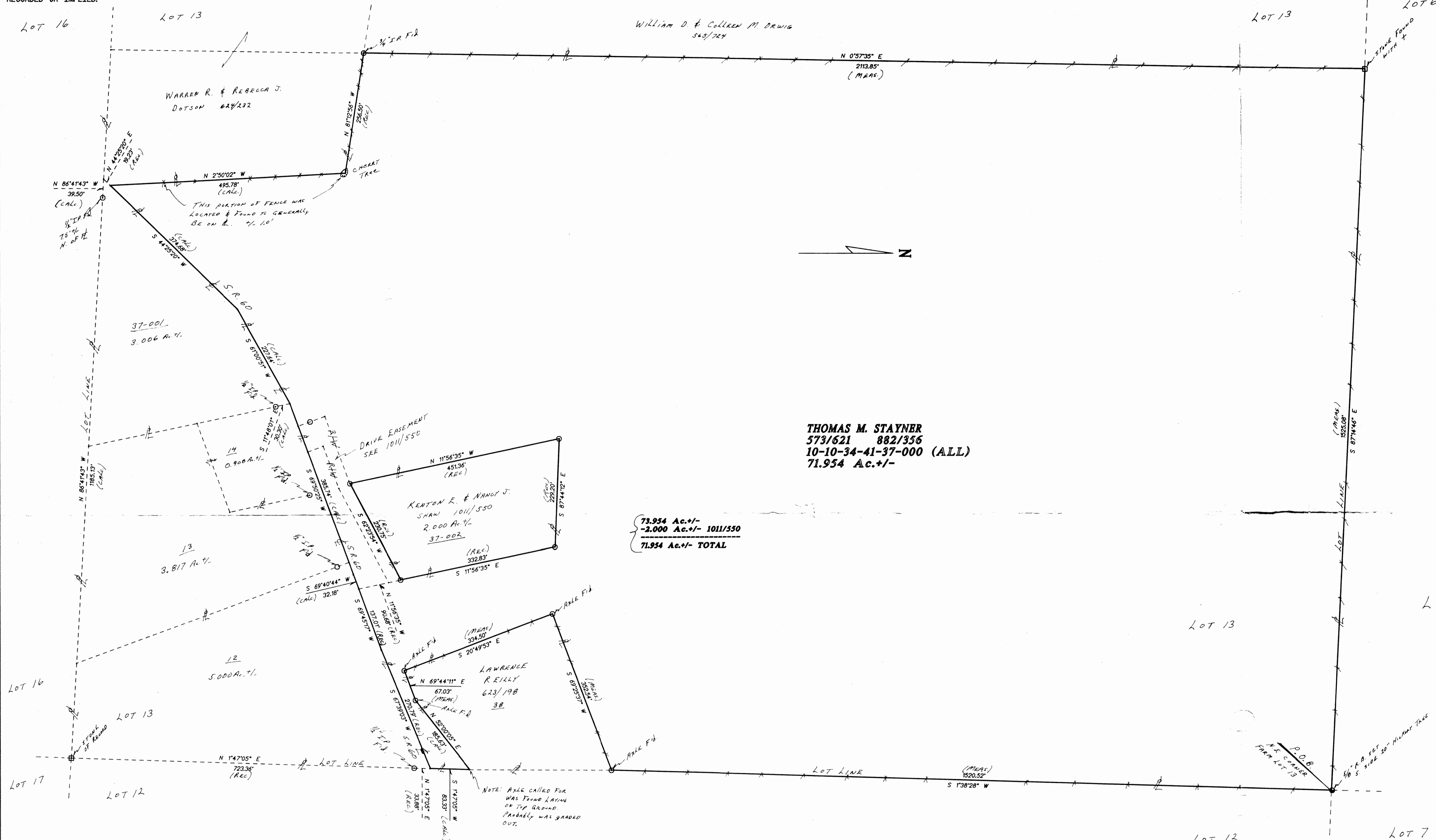
Pertinent documents: tax map
Deeds: 882/356, 1011/550, 623/198,
995/594, 965/228, 934/34, 937/157,
887/340, 624/232, 565/724, 698/80,
809/20, 473/576

Surveys by: W.J. Bledenbach,
Richard Max Graves, Harold W.
Hitchens

Bearings are based on
D.B. 995, pg. 594

- - All 5/8" steel pins set are 30" long.
- - iron pin found size as marked
- - stone

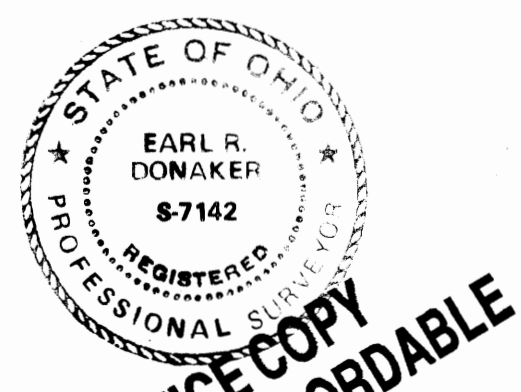
--- WIRE FENCE
FENCE LINES WERE NOT SURVEYED & MAY WANDER EITHER SIDE OF PROPERTY LINE



THOMAS M. STAYNER
573/621 882/356
10-10-34-41-37-000 (ALL)
71.954 Ac. +/-

73.954 Ac. +/-
-2.000 Ac. +/- 1011/550
71.954 Ac. +/- TOTAL

NOTE: APPLE CALLED FOR WAS FOUND LAYING ON TOP GROUND. PROBABLY WAS GANNED OUT.



I, Earl R. Donaker, P.S., 7142, hereby certify this plat to have been prepared from a survey and to be correct to the best of my knowledge and belief.

DESCRIPTION APPROVED FOR AUDITOR'S TRANSFER
BY: *A.J. Naulls*
10-9-90

Being 71.954 ac. +/-, in farm lot 13, all 10-10-34-41-37-000 4th 1/4 of T. 3 N., R. 8 W., United States Military Lands, in the Township of Cass, in the County of Muskingum, in the State of Ohio.
Date: October, 1990