

Clay Township
S.W. Qtr. Section 1
N.W. Qtr. Section 12
T-14 N; R-14 W
Muskingum County, Ohio

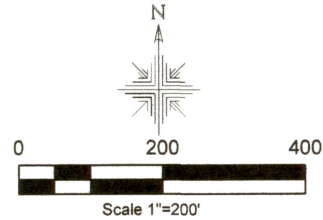
SURVEYED FOR: Frank Williams

REFERENCES:

Deeds as shown

Surveys on file at Muskingum County Map Office

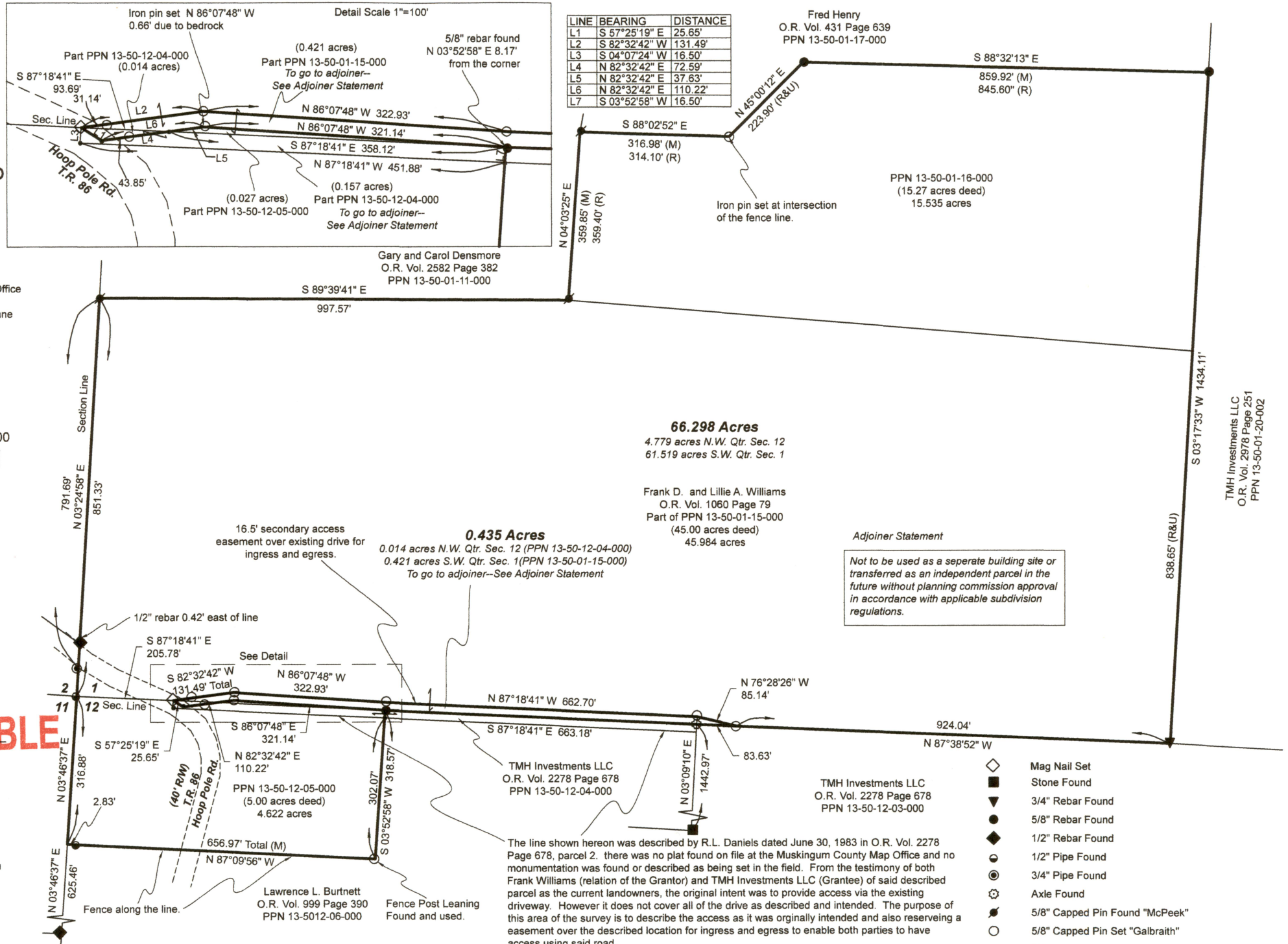
Basis of Bearing: Grid North, Ohio State Plane
Coordinate System, South Zone, NAD 83.



OFFICE COPY
NOT RECORDABLE

I certify this survey to be correct to the best of
my knowledge.
Caleb Jerome Galbraith P.S. 8703
Date: June 3, 2021
Job ID: 9021

Pioneer Surveying & Services, LLC.
5434 Township Road 377
Millersburg, Ohio 44654
Phone: 330-231-0497
Email: caleb@pioneersurveyingandservices.com



Reduced copy, not to scale, Larger
copy available in the Muskingum
County Engineer's Map Dept.

DESCRIPTION
APPROVED
By: *[Signature]*
6/3/2021

TMH Investments LLC
O.R. Vol. 2978 Page 251
PPN 13-50-01-20-002