

SURVEY FOR EDEN GROUP, LTD

AUDITORS PARCEL NUMBER
17-17-12-02-40-000 (PART)

BEING A PART OF QUARTER TOWNSHIP 2, TOWNSHIP 1,
RANGE 8, UNITED STATES MILITARY LANDS,
FALLS TOWNSHIP, MUSKINGUM COUNTY, OHIO

BEARINGS ARE BASED ON THE PREVIOUS SURVEY OF 131.08
ACRES AS CONVEYED TO EDEN GROUP, LTD. AS RECORDED IN
VOL. 1125, PG. 222 OF THE MUSKINGUM COUNTY DEED RECORDS.

RESEARCH:

PREVIOUS SURVEY OF 131.08 AC.
BY R.M. GRAVES DATED 7/15/1992
PREVIOUS SURVEY OF 0.50 AC.
BY J.D. NEWCOME DATED 3/19/97
PREVIOUS SURVEY PLAT OF TRACTS
BY DPH SURVEYING DATED 8/1990 AND 11/91
EXISTING AERIAL MAPPING
MUSKINGUM COUNTY TAX MAPS

EDEN GROUP, LTD.
VOL. 1125, PG. 222

SCALE 1"=200'
0 100 200 400

EDEN GROUP, LTD.
VOL. 1125, PG. 222

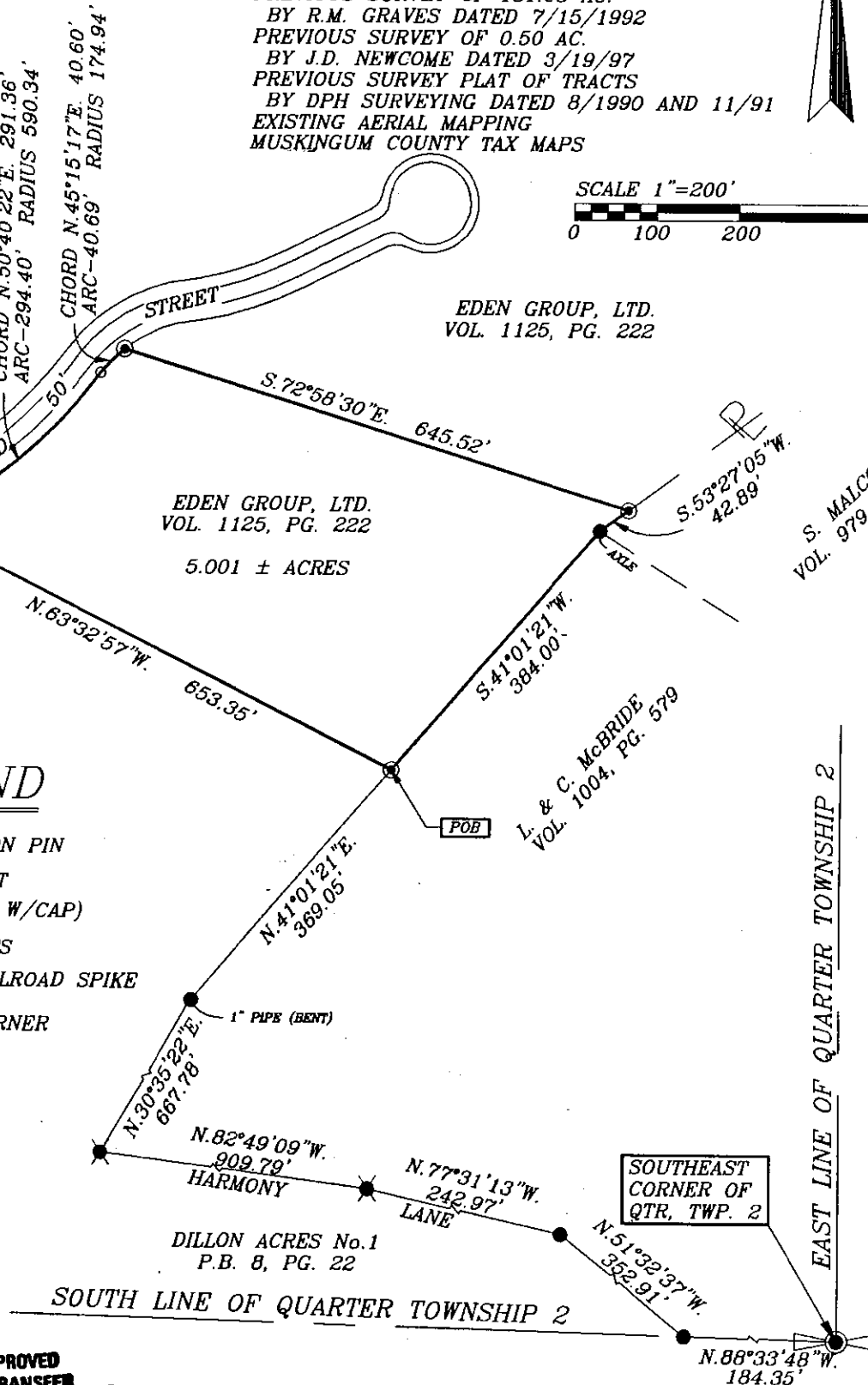
EDEN GROUP, LTD.
VOL. 1125, PG. 222
5.001 ± ACRES

S. MALCOLM
VOL. 979, PG. 393

L. & C. McBRIDE
VOL. 1004, PG. 579

LEGEND

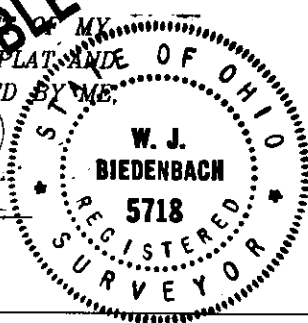
- EXISTING IRON PIN
- ⊙ IRON PIN SET
(5/8" REBAR W/CAP)
- ANGLE POINTS
- ✱ EXISTING RAILROAD SPIKE
- ⊠ QUARTER CORNER



DESCRIPTION APPROVED
FOR AUDITOR'S TRANSFER
BY A.W. Swinehart
11-17-98

I HEREBY CERTIFY TO THE BEST OF MY
KNOWLEDGE AND BELIEF THE ABOVE PLAT AND
SURVEY TO BE CORRECT AS PREPARED BY ME,
THIS 29th DAY OF SEPTEMBER, 1998.

W.J. BIEDENBACH
REGISTERED SURVEYOR #5718



W.J. BIEDENBACH & ASSOC.
SURVEYING & MAPPING
ZANESVILLE, OHIO
(740) 453-4850

DRAWN BY: MDN	DATE: 09-29-98
SCALE: 1"=200'	CHECKED BY: WJB
JOB NO: 4321	DRAWING NO: D:\4321\MICH7AC.