

### Survey for Eagle Crest Limited

Being a part of land located in the State of Ohio, County of Muskingum, Township of Falls and being part of Lot 4 of Underwoods Subdivision, in Quarter Township 2, Township 1 North, Range 7, bounded and described as follows:

Commencing at the southeast corner of Lot 49 of Skyline Acres (Plat Book 9, Page 21);

thence South 85 degrees 04 minutes 12 seconds East 907.37 feet;

thence South 04 degrees 39 minutes 28 seconds West 1764.27 feet;

thence North 84 degrees 48 minutes 00 seconds West 482.93 feet to the northeast corner of Eagle Crest Limited (OR 1585-369);

thence along the north line of Eagle Crest Limited (OR 1585-369) North 84 degrees 48 minutes 05 seconds West 149.00 feet;

thence continuing along the north line of Eagle Crest Limited (OR 1585-369) North 84 degrees 48 minutes 00 seconds West 50.00 feet;

thence continuing along the north line of Eagle Crest Limited (OR 1585-369) North 84 degrees 48 minutes 00 seconds West 142.35 feet, being the northwest corner of Eagle Crest Limited (OR 1585-369);

thence along the west line of Eagle Crest Limited (OR 1585-369) South 05 degrees 50 minutes 01 seconds West 30.00 feet to an iron pin found;

thence continuing along the west line of Eagle Crest Limited (OR 1585-369) South 05 degrees 50 minutes 01 seconds West 169.77 feet to an iron pin found;

thence continuing along the west line of Eagle Crest Limited (OR 1585-369) South 05 degrees 49 minutes 57 seconds West 135.01 feet to an iron pin found;

thence continuing the west line of Eagle Crest Limited (OR 1585-369) South 05 degrees 50 minutes 01 seconds West 135.01 feet to an iron pin set;

thence continuing the west line of Eagle Crest Limited (OR 1585-369) South 05 degrees 50 minutes 01 seconds West 134.25 feet to an iron pin set, the **principal place of beginning** for this parcel;

thence leaving the west line of Eagle Crest Limited (OR 1585-369) South 84 degrees 48 minutes 16 seconds East 143.23 feet to an iron pin set;

thence on a curve to the left having a radius of 45.00 feet, a delta angle of 60 degrees 57 minutes 21 seconds and a chord bearing and distance of South 24 degrees 14 minutes 07 seconds East 45.65 feet to an iron pin set;

thence South 28 degrees 11 minutes 02 seconds West 65.43 feet to an iron pin set;

thence South 18 degrees 58 minutes 18 seconds West 57.76 feet to an iron pin set;

thence North 84 degrees 09 minutes 52 seconds West 128.09 feet to an iron pin set on the west line of Eagle Crest Limited (OR 1585-369);

thence along the west line of Eagle Crest Limited (OR 1585-369) North 05 degrees 50 minutes 01 seconds East 154.68 feet to the principal place of beginning, containing 0.52 acres, more or less.

Iron pins set are 5/8 inch rebar 30 inches long with identification caps (SWIERZ 8062). This legal description was prepared by Denis P. Swierz Reg. Surv. No. 8062, based on a field survey made in August 2001 by DADECO Engineering.

Subject to all easements, right of ways, restrictions, reservations, etc.. of record and those that may be implied.

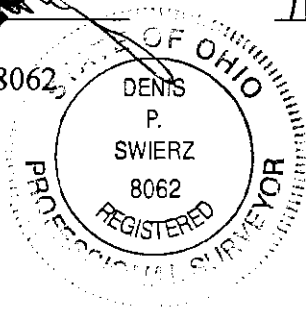
References: DR 1139-402  
OR 585-369

DESCRIPTION APPROVED  
FOR AUDIT OF TRANSFER  
BY RS  
11-19-2002

Part of Parcel No.: 17-24-01-30-000 ( $\pm 0.52$  acres)

*Denis P. Swierz*  
Denis P. Swierz  
Reg. Surv. No. 8062

11/13/02  
Date



OFFICE COPY  
NOT RECORDABLE

# PLAT OF SURVEY FOR EAGLE CREST LIMITED

STATE OF OHIO  
MUSKINGUM COUNTY, FALLS TOWNSHIP  
QUARTER TOWNSHIP 2, T1N, R7W  
PART OF LOT 4 OF UNDERWOODS SUBDIVISION  
PART OF 7.27 ACRES

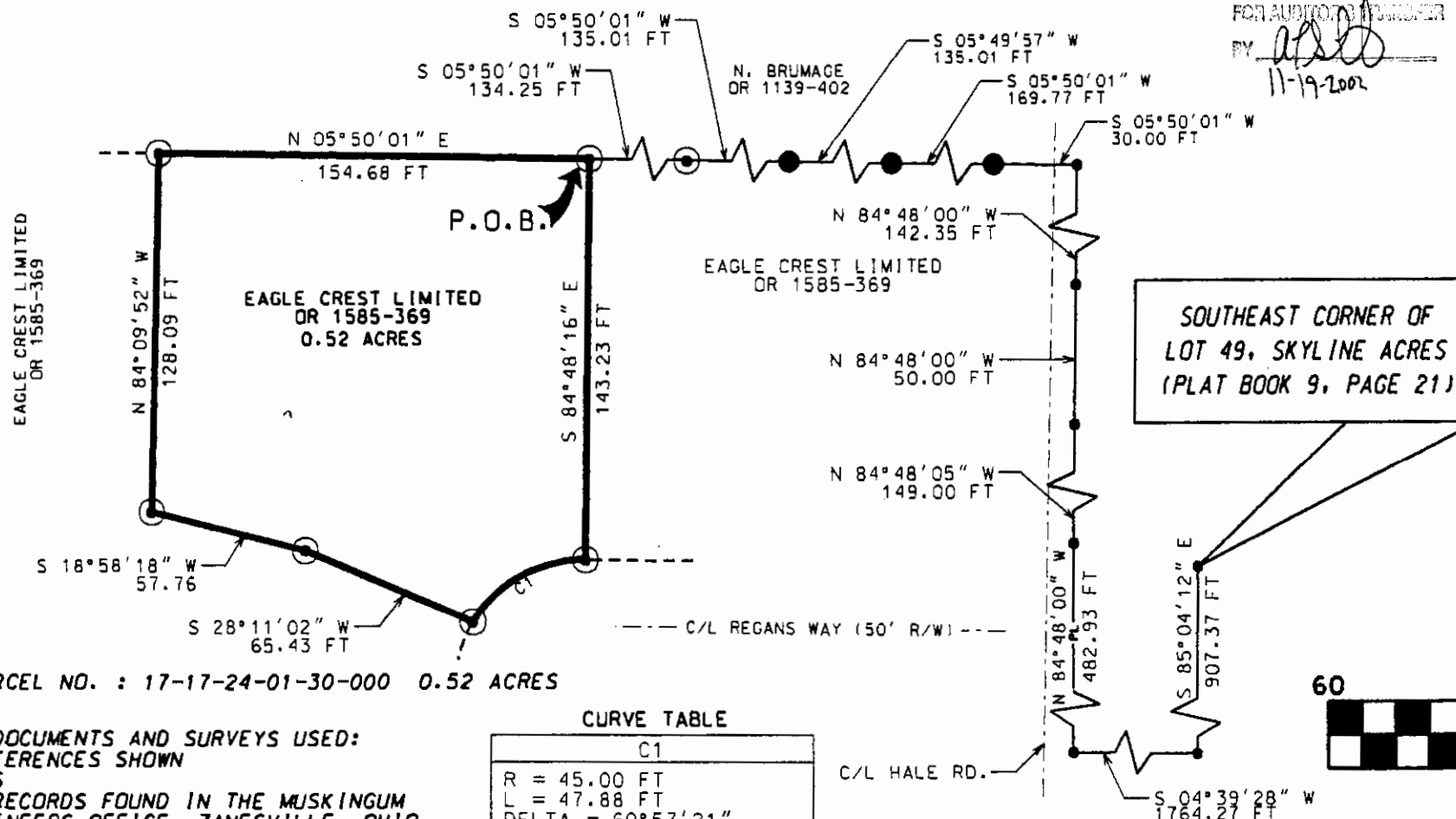
## LEGEND

- IRON PIN SET  $\frac{5}{8}$ "x30" W/ CAP  
MARKED (SWIERZ 8062)
- IRON PIN FOUND
- POINT

DESCRIPTION SET FOR  
FOR AUDITORY PURPOSES

BY ASD  
11-19-2002

I HEREBY CERTIFY THIS PLAT  
TO BE CORRECT AS SURVEYED BY  
DADECO ENGINEERING AUGUST 2001



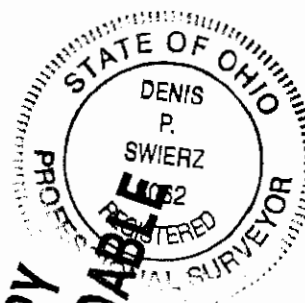
PART OF PARCEL NO. : 17-17-24-01-30-000 0.52 ACRES

### PERTINENT DOCUMENTS AND SURVEYS USED:

1. DEED REFERENCES SHOWN
2. TAX MAPS
3. SURVEY RECORDS FOUND IN THE MUSKINGUM COUNTY ENGINEERS OFFICE, ZANESVILLE, OHIO

### BASIS OF BEARING:

BEARINGS SHOWN HEREON ARE TO AN ASSUMED MERIDIAN  
AND ARE USED TO DENOTE ANGLES ONLY.



DENIS P. SWIERZ  
PS# 8062  
DATE 11/13/02

DENIS P. SWIERZ  
909 TALLEY AVE.  
ZANESVILLE, OH 43701  
(740) 454-6853