

Terry J. Finley Surveying & Mapping

OFFICE COPY
NOT RECORDED
Covered by #S-7222

LEGAL DESCRIPTION FOR
RAYMOND SINGER PROPERTY

SITUATED IN THE STATE OF OHIO, COUNTY OF MUSKINGUM, TOWNSHIP OF FALLS, AND BEING PART OF THE NORTHEAST QUARTER OF QUARTER TOWNSHIP 2, TOWNSHIP 1, RANGE 8, AND BEING ALL THOSE LANDS INTENDED TO BE DESCRIBED IN DEED VOLUME 1017, PAGE 241 OF THE MUSKINGUM COUNTY DEED RECORDS. BEING FURTHER BOUNDED AND DESCRIBED AS FOLLOWS:

BEGINNING AT A STONE FOUND AT THE NORTHWEST CORNER OF SAID NORTHEAST QUARTER OF QUARTER TOWNSHIP 2; THENCE, ALONG THE NORTH LINE THEREOF, SOUTH 82 DEGREES - 11 MINUTES - 29 SECONDS EAST, 1508.14 FEET TO AN IRON PIPE FOUND; THENCE, ALONG THE SOUTHWESTERLY LINE OF LANDS RECORDED IN DEED VOLUME 1018, PAGE 410, SOUTH 41 DEGREES - 46 MINUTES - 10 SECONDS EAST, 431.93 FEET TO AN IRON PIPE FOUND; THENCE, SOUTH 46 DEGREES - 59 MINUTES - 36 SECONDS EAST, 436.79 FEET TO AN IRON PIPE FOUND; THENCE, NORTH 32 DEGREES - 00 MINUTES - 24 SECONDS EAST, 135.13 FEET TO A POINT IN THE CENTER OF COUNTY ROAD #148 (BAUGHMAN ROAD), PASSING AN IRON PIPE FOUND AT 113.33 FEET; THENCE, ALONG THE CENTERLINE OF SAID COUNTY ROAD, THE FOLLOWING 26 COURSES AND DISTANCES:

- 1) SOUTH 29 DEGREES - 18 MINUTES - 06 SECONDS EAST, 77.16 FEET TO A POINT;
- 2) SOUTH 34 DEGREES - 19 MINUTES - 14 SECONDS EAST, 68.89 FEET TO A POINT;
- 3) SOUTH 37 DEGREES - 46 MINUTES - 01 SECONDS EAST, 111.25 FEET TO A POINT;
- 4) SOUTH 35 DEGREES - 54 MINUTES - 32 SECONDS EAST, 55.15 FEET TO A POINT;
- 5) SOUTH 29 DEGREES - 14 MINUTES - 26 SECONDS EAST, 61.96 FEET TO A POINT;
- 6) SOUTH 11 DEGREES - 42 MINUTES - 57 SECONDS EAST, 51.15 FEET TO A POINT;
- 7) SOUTH 05 DEGREES - 21 MINUTES - 59 SECONDS WEST, 8.49 FEET TO A POINT;
- 8) SOUTH 05 DEGREES - 22 MINUTES - 58 SECONDS WEST, 42.72 FEET TO A POINT;
- 9) SOUTH 14 DEGREES - 09 MINUTES - 35 SECONDS WEST, 94.30 FEET TO A POINT;
- 10) SOUTH 11 DEGREES - 10 MINUTES - 35 SECONDS WEST, 62.84 FEET TO A POINT;
- 11) SOUTH 08 DEGREES - 22 MINUTES - 28 SECONDS WEST, 113.43 FEET TO A POINT;
- 12) SOUTH 13 DEGREES - 33 MINUTES - 20 SECONDS WEST, 44.13 FEET TO A POINT;
- 13) SOUTH 18 DEGREES - 08 MINUTES - 30 SECONDS WEST, 188.46 FEET TO A POINT;
- 14) SOUTH 10 DEGREES - 47 MINUTES - 10 SECONDS WEST, 53.31 FEET TO A POINT;
- 15) SOUTH 01 DEGREES - 37 MINUTES - 11 SECONDS EAST, 69.52 FEET TO A POINT;

PAGE 2

LEGAL DESCRIPTION/
RAYMOND SINGER

OFFICE COPY
NOT RECORDABLE

16) SOUTH 11 DEGREES - 28 MINUTES - 42 SECONDS EAST, 43.37 FEET TO A POINT;
17) SOUTH 17 DEGREES - 41 MINUTES - 45 SECONDS EAST, 42.35 FEET TO A POINT;
18) SOUTH 23 DEGREES - 37 MINUTES - 44 SECONDS EAST, 54.11 FEET TO A POINT;
19) SOUTH 23 DEGREES - 26 MINUTES - 33 SECONDS EAST, 68.62 FEET TO A POINT;
20) SOUTH 19 DEGREES - 05 MINUTES - 34 SECONDS EAST, 38.04 FEET TO A POINT;
21) SOUTH 11 DEGREES - 10 MINUTES - 39 SECONDS EAST, 45.18 FEET TO A POINT;
22) SOUTH 04 DEGREES - 34 MINUTES - 33 SECONDS EAST, 64.76 FEET TO A POINT;
23) SOUTH 00 DEGREES - 14 MINUTES - 35 SECONDS EAST, 73.32 FEET TO A POINT;
24) SOUTH 00 DEGREES - 01 MINUTES - 48 SECONDS WEST, 86.87 FEET TO A POINT;
25) SOUTH 01 DEGREES - 33 MINUTES - 02 SECONDS EAST, 74.69 FEET TO A POINT;
26) SOUTH 02 DEGREES - 05 MINUTES - 16 SECONDS EAST, 105.12 FEET TO A POINT;

THENCE, LEAVING SAID COUNTY ROAD, ALONG THE CENTERLINE OF A PRIVATE ROAD AS DESCRIBED IN DEED VOLUME 496, PAGE 215, PARCEL #4, THE FOLLOWING FOUR COURSES AND DISTANCES:

1) NORTH 76 DEGREES - 03 MINUTES - 56 SECONDS WEST, 17.01 FEET TO A POINT.
2) NORTH 75 DEGREES - 33 MINUTES - 18 SECONDS WEST, 81.12 FEET TO A POINT.
3) NORTH 76 DEGREES - 22 MINUTES - 48 SECONDS WEST, 76.77 FEET TO A POINT.
4) NORTH 74 DEGREES - 49 MINUTES - 25 SECONDS WEST, 73.99 FEET TO A POINT AT THE SOUTHWEST CORNER OF "THE MEETING HOUSE LOT," AS DESCRIBED IN AFORESAID DEED VOLUME 496, PAGE 215, PARCEL #4;

THENCE, LEAVING SAID ROAD, NORTH 08 DEGREES - 15 MINUTES - 16 SECONDS EAST, 198.00 FEET TO AN IRON PIN SET; THENCE, NORTH 81 DEGREES - 44 MINUTES - 44 SECONDS WEST, 236.37 FEET TO AN IRON PIN SET AT THE NORTHWEST CORNER OF BLACK LOG CEMETERY; THENCE, WITH THE WEST LINE OF SAID CEMETERY, SOUTH 08 DEGREES - 15 MINUTES - 16 SECONDS WEST, 263.81 FEET TO AN IRON PIN SET, PASSING AN IRON PIN SET AT THE SOUTHWEST CORNER OF SAID CEMETERY IN THE CENTERLINE OF AFORESAID PRIVATE ROAD; THENCE, NORTH 81 DEGREES - 52 MINUTES - 39 SECONDS WEST, 2208.10 FEET TO A POINT ON THE WEST LINE OF SAID QUARTER SECTION, FROM WHICH AN IRON PIN FOUND BEARS NORTH 08 DEGREES - 31 MINUTES - 55 SECONDS EAST, 10.00 FEET; THENCE, NORTH 08 DEGREES - 31 MINUTES - 55 SECONDS EAST, 2092.15 FEET TO THE POINT OF BEGINNING, AND CONTAINING 112.664 ACRES MORE OR LESS.

PAGE 3
LEGAL DESCRIPTION/
RAYMOND SINGER

SUBJECT TO ALL LEGAL HIGHWAYS AND EASEMENTS OF RECORD.

BEARINGS DESCRIBED HEREIN ARE BASED UPON ASSUMED AZIMUTH AND TO BE USED FOR ANGLE PURPOSES ONLY.

IRON PINS SET ARE 5/8" REBAR WITH YELLOW IDENTIFICATION CAP (FINLEY S-7222).

BEING ALL OF AUDITOR'S PARCEL NUMBERS:

17-03-02-15-000

17-03-02-16-000

ALSO, THE FOLLOWING 20' EASEMENT FOR THE PURPOSES OF INGRESS/EGRESS TO ABOVE-DESCRIBED PROPERTY AND BLACK LOG CEMETERY; BEGINNING AT THE SOUTHEAST CORNER OF ABOVE-DESCRIBED PROPERTY IN THE CENTERLINE OF COUNTY ROAD #148; THENCE, ALONG THE CENTERLINE OF AFORESAID PRIVATE ROAD, THE FOLLOWING NINE COURSES AND DISTANCES:

- 1) NORTH 76 DEGREES - 03 MINUTES - 56 SECONDS WEST, 17.01 FEET TO A POINT.
- 2) NORTH 75 DEGREES - 33 MINUTES - 18 SECONDS WEST, 81.12 FEET TO A POINT.
- 3) NORTH 76 DEGREES - 22 MINUTES - 48 SECONDS WEST, 76.77 FEET TO A POINT.
- 4) NORTH 74 DEGREES - 49 MINUTES - 25 SECONDS WEST, 73.99 FEET TO AN IRON PIN SET.
- 5) NORTH 79 DEGREES - 13 MINUTES - 03 SECONDS WEST, 60.57 FEET TO A POINT.
- 6) NORTH 82 DEGREES - 16 MINUTES - 29 SECONDS WEST, 68.62 FEET TO A POINT.
- 7) NORTH 80 DEGREES - 42 MINUTES - 36 SECONDS WEST, 51.96 FEET TO A POINT.
- 8) SOUTH 80 DEGREES - 13 MINUTES - 25 SECONDS WEST, 30.31 FEET TO A POINT.
- 9) SOUTH 66 DEGREES - 05 MINUTES - 12 SECONDS WEST, 31.47 TO AN IRON PIN SET, AND THE TERMINUS OF THIS EASEMENT.

THIS DESCRIPTION, WRITTEN ON OCTOBER 22, 1994, IS BASED ON AN ACTUAL SURVEY OF THE PREMISES BY TERRY J. FINLEY, OHIO REGISTERED SURVEYOR #S-7222.

OFFICE COPY
~~NOT RECORDABLE~~
TERRY J. FINLEY
REGISTERED SURVEYOR #S-7222

DESCRIPTION APPROVED
FOR AUDITOR'S TRANSFER

BY

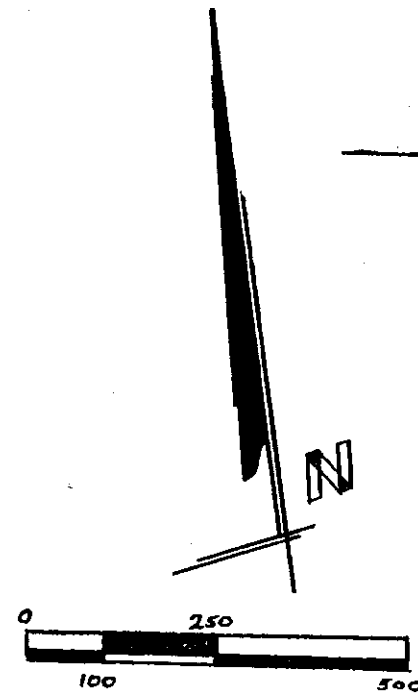
10-24-94

SURVEY PLAT FOR RAYMOND SINGER PROPERTY

STATE of OHIO, COUNTY of MUSKINGUM, TOWNSHIP of FALLS

PT.2ND QTR. T-1,R-8 USML

- LEGEND: Stone found ☐
Iron pin set ☐
Iron pin found ☐
R/R Spike set ☐
R/R Spike found ☐
Nail set ☐
Nail found ☐
Iron pins set ☐ 3/8 rebar with cap #7222



SCALE 1" = 250'

Auditors parcel #
17-03-02-15
17-03-02-16

V. LOWE
1092/512



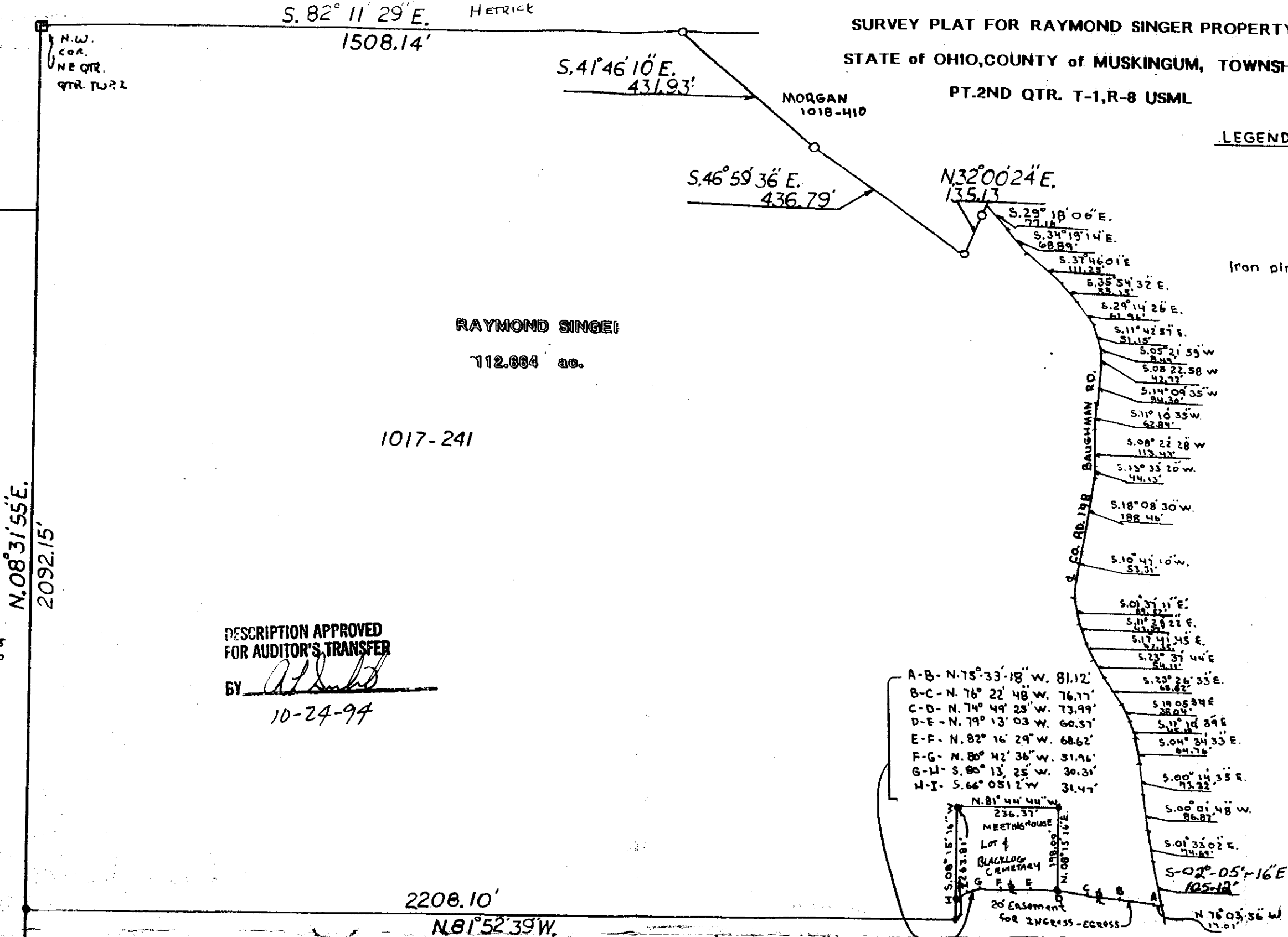
Bearing shown hereon are based upon
assumed azimuth & used for
angle purposes only.

RAYMOND SINGER LIKE ESTATE
TO V.E. BALL
this plat drawn on Oct. 19 1994
TERRY J. FINLEY, Ohio registered surveyor
#s-7222 based on an actual survey

OFFICE COPY
NOT RECORDED

RAYMOND SINGER PROPERTY

SCALE: 1"=250'	APPROVED BY F	DRAWN BY J.T.
DATE: 10-19-94	TERRY J. FINLEY SURVEYING & MAPPING	
		DRAWING NUMBER 94-350



RAYMOND SINGER
112.664 ac.
1017-241

DESCRIPTION APPROVED
FOR AUDITOR'S TRANSFER
BY *[Signature]*
10-24-94

- A-B- N. 75° 33' 18" W. 81.12'
B-C- N. 76° 22' 48" W. 76.77'
C-D- N. 74° 49' 25" W. 73.99'
D-E- N. 79° 13' 03" W. 60.57'
E-F- N. 82° 16' 29" W. 68.62'
F-G- N. 80° 42' 36" W. 31.96'
G-H- S. 80° 13' 25" W. 30.31'
H-I- S. 66° 05' 12" W. 31.47'
I-A- N. 81° 44' 44" W. 236.37'
A-B- N. 75° 33' 18" W. 81.12'
- MEETINGHOUSE
Lot 4
BLACKLOG CEMETARY
20' Easement for INGRESS-EGRESS
- S. 29° 18' 06" E. 77.16'
S. 34° 19' 14" E. 68.89'
S. 37° 46' 01" E. 111.23'
S. 35° 54' 32" E. 53.15'
S. 29° 14' 26" E. 61.94'
S. 11° 42' 57" E. 51.15'
S. 05° 21' 59" W. 84.49'
S. 08° 22' 58" W. 42.72'
S. 14° 09' 35" W. 84.38'
S. 11° 16' 35" W. 62.87'
S. 08° 22' 28" W. 113.43'
S. 13° 33' 20" W. 44.13'
S. 18° 08' 30" W. 188.46'
S. 10° 41' 10" W. 53.31'
S. 01° 31' 11" E. 89.32'
S. 11° 24' 21" E. 43.72'
S. 17° 41' 45" E. 42.35'
S. 23° 37' 44" E. 54.11'
S. 23° 25' 33" E. 48.62'
S. 19° 08' 34" E. 28.04'
S. 11° 16' 29" E. 46.18'
S. 04° 24' 33" E. 64.76'
S. 00° 14' 35" E. 73.22'
S. 00° 01' 48" W. 86.87'
S. 01° 33' 02" E. 74.63'
S. 02° 05' 16" E. 105.12'