

727 Cambridge Road
Coshocton, Ohio 43812



LANDMARK SURVEYS

EARL R. DONAKER, P.S.

(614) 623-0993
1-800-842-3264

JERRY S. HENDERSON, CHARLES E. & WILMA J. NORMAN,
DAVID A. & RUTH ANN COULSON 5.229 Acres

TRACT 1

Being 5.229 acres, more or less, part of parcel 17-07-01-09-002, in Lot 2 of Sibleys Subdivision, of township 1 north, range 8 west, United States Military Lands, in the township of Falls, in the county of Muskingum, in the State of Ohio, and more particularly described as follows:

Commencing at an axle found at the northeast corner of Lot 18, Northbrook, P.B. 9, page 11;

thence, along the property line of Joseph & Kimberly Buckey, 1064/357, the following 4 courses:

1. thence, S.85°21'51"E. 406.40' to a 5/8" steel pin found;
2. thence, N.05°32'47"E. 50.01' to a 5/8" steel pin found;
3. thence, N.05°32'47"E. 1774.27' to a point in a stream;
4. thence, S.88°31'47"W. 440.48' to a point in a stream;

thence, along the property line of East Central Ohio Realty, 1064/325, the following 3 courses:

1. thence, S.86°54'29"W. 56.71' to a point in a stream;
2. thence, N.86°45'13"W. 255.00' to a point in a stream;
3. thence, S.72°49'48"W. 418.84', to a point in a stream, said point being the TRUE POINT OF BEGINNING;

thence, continuing along the property line of East Central Ohio Realty, 1064/325, the following 2 courses:

1. thence, continuing S.72°49'48"W. 303.65' to a point in a stream;
2. thence, continuing S.72°49'48"W. 54.22' to a point in a stream;

thence, along the property line of Mutual Federal Savings & Loan Association, et.al., 860/223, the following 2 courses:

1. thence, N.05°35'29"E. 115.51' to a 5/8" steel pin set;
2. thence, continuing N.05°35'29"E. 644.23' to a 3/4" pipe found;

thence, along the property line of Virginia Osborn et.al., 1050/218, S.84°18'21"E. 330.00' to a 5/8" steel pin set;

thence, through the property of Jerry S. Henderson, Charles E. & Wilma J. Norman, David A. & Ruth Ann Coulson, 1065/577, the following 2 courses:

1. thence, S.05°35'29"W. 510.57' to a 5/8" steel pin set;
2. thence, continuing S.05°35'29"W. 110.12' to the TRUE POINT OF BEGINNING, containing 5.229 acres, more or less, and is subject to all easements, rights-of-way, or restrictions, whether recorded or implied.

Bearings are based on Deed Book 1065, page 577, and are for angular calculations only. All 5/8" steel pins set are 30" long with plastic cap marked "E.R.D. 7142".

Pertinent documents: tax maps: 17-07; deeds: 1065/577, 1050/218, 898/325, 898/319, 898/317, 474/427, 736/88, 1064/357, 793/179, 860/223; Plat Book 9, page 11; surveys by: Earl R. Donaker, W.J. Biedenbach, R.L. Daniels, John R. Marshall, A.T. Connor, R.B. Pinnick, Charles R. Harkness.

Prior deed: 1065/577.

Description and plat by Landmark Surveyor Earl R. Donaker, Professional Surveyor, #7142, from a survey of the premises in the month of April, in the year of our Lord one thousand nine hundred and ninety-three.

OFFICE COPY
NOT RECORDABLE

DESCRIPTION APPROVED
FOR AUDITOR'S TRANSFER

By: A. J. Lill

4-19-93

727 Cambridge Road
Coshocton, Ohio 43812



LANDMARK SURVEYS

EARL R. DONAKER, P.S.

(614) 623-0993
1-800-842-3264

JERRY S. HENDERSON, CHARLES E. & WILMA J. NORMAN,
DAVID A. & RUTH ANN COULSON 2.219 Acres

TRACT 2

Being 2.219 acres, more or less, part of parcel 17-07-01-09-002, in Lot 2 of Sibleys Subdivision, of township 1 north, range 8 west, United States Military Lands, in the township of Falls, in the county of Muskingum, in the State of Ohio, and more particularly described as follows:

Commencing at an axle found at the northeast corner of Lot 18, Northbrook, P.B. 9, page 11;

thence, along the property line of Joseph & Kimberly Buckey, 1064/357, the following 4 courses:

1. thence, S.85°21'51"E. 406.40' to a 5/8" steel pin found;
2. thence, N.05°32'47"E. 50.01' to a 5/8" steel pin found;
3. thence, N.05°32'47"E. 1774.27' to a point in a stream;
4. thence, S.88°31'47"W. 440.48' to a point in a stream;

thence, along the property line of East Central Ohio Realty, 1064/325, the following 3 courses:

1. thence, S.86°54'29"W. 56.71' to a point in a stream;
2. thence, N.86°45'13"W. 255.00' to a point in a stream;
3. thence, S.72°49'48"W. 239.91', to a point in a stream, said point being the TRUE POINT OF BEGINNING;

thence, continuing along the property line of East Central Ohio Realty, 1064/325, S.72°49'48"W. 178.93' to a point in a stream;

thence, through the property of Jerry S. Henderson, Charles E. & Wilma J. Norman, David A. & Ruth Ann Coulson, 1065/577, the following 2 courses:

1. thence, N.05°35'29"E. 110.12' to a 5/8" steel pin set;
2. thence, continuing N.05°35'29"E. 510.57' to a 5/8" steel pin set;

thence, along the property line of Virginia Osborn et.al., 1050/218, S.84°18'21"E. 165.00' to a 5/8" steel pin set;

thence, through the property of Jerry S. Henderson, Charles E. & Wilma J. Norman, David A. & Ruth Ann Coulson, 1065/577, the following 2 courses:

1. thence, S.05°35'29"W. 443.74' to a 5/8" steel pin set;
2. thence, continuing S.05°35'29"W. 107.43' to the TRUE POINT OF BEGINNING, containing 2.219 acres, more or less, and is subject to all easements, rights-of-way, or restrictions, whether recorded or implied.

Bearings are based on Deed Book 1065, page 577, and are for angular calculations only. All 5/8" steel pins set are 30" long with plastic cap marked "E.R.D. 7142".

Pertinent documents: tax maps: 17-07; deeds: 1065/577, 1050/218, 898/325, 898/319, 898/317, 474/427, 736/88, 1064/357, 793/179, 860/223; Plat Book 9, page 11; surveys by: Earl R. Donaker, W.J. Biedenbach, R.L. Daniels, John R. Marshall, A.T. Connor, R.B. Pinnick, Charles R. Harkness.

Prior deed: 1065/577.

Description and plat by Landmark Surveys, Earl R. Donaker, Professional Surveyor, #7142, from a survey of the premises in the month of April, in the year of our Lord one thousand nine hundred and ninety-three.

OFFICE COPY
NOT RECORDABLE

DESCRIPTION APPROVED
FOR AUDITOR'S TRANSFER

BY Earl R. Donaker

4-19-93

727 Cambridge Road
Coshocton, Ohio 43812



LANDMARK SURVEYS

EARL R. DONAKER, P.S.

(614) 623-0993
1-800-842-3264

JERRY S. HENDERSON, CHARLES E. & WILMA J. NORMAN,
DAVID A. & RUTH ANN COULSON 5.208 Acres

TRACT 3

Being 5.208 acres, more or less, part of parcel 17-07-01-09-002, in Lot 2 of Sibleys Subdivision, of township 1 north, range 8 west, United States Military Lands, in the township of Falls, in the county of Muskingum, in the State of Ohio, and more particularly described as follows:

Commencing at an axle found at the northeast corner of Lot 18, Northbrook, P.B. 9, page 11;

thence, along the property line of Joseph & Kimberly Buckey, 1064/357, the following 4 courses:

1. thence, S.85°21'51"E. 406.40' to a 5/8" steel pin found;
2. thence, N.05°32'47"E. 50.01' to a 5/8" steel pin found;
3. thence, N.05°32'47"E. 1774.27' to a point in a stream;
4. thence, S.88°31'47"W. 440.48' to a point in a stream;

thence, along the property line of East Central Ohio Realty, 1064/325, S.86°54'29"W. 56.71' to a point in a stream, said point being the TRUE POINT OF BEGINNING;

thence, along the property line of East Central Ohio Realty, 1064/325, the following 2 courses:

1. thence, N.86°45'13"W. 255.00' to a point in a stream;
2. thence, S.72°49'48"W. 239.91', to a point in a stream;

thence, through the property of Jerry S. Henderson, Charles E. & Wilma J. Norman, David A. & Ruth Ann Coulson, 1065/577, the following 2 courses:

1. thence, N.05°35'29"E. 107.43' to a 5/8" steel pin set;
2. thence, continuing N.05°35'29"E. 443.74' to a 5/8" steel pin set;

thence, along the property line of Virginia Osborn et.al., 1050/218, S.84°18'21"E. 475.81' to a point;

thence, through the property of Jerry S. Henderson, Charles E. & Wilma J. Norman, David A. & Ruth Ann Coulson, 1065/577, the following 3 courses:

1. thence, S.05°33'59"W. 347.00' to a 5/8" steel pin set;
2. thence, continuing S.05°33'59"W. 75.62' to a 5/8" steel pin found;
3. thence, continuing S.05°33'59"W. 24.44' to the TRUE POINT OF BEGINNING, containing 5.208 acres, more or less, and is subject to all easements, rights-of-way, or restrictions, whether recorded or implied.

Bearings are based on Deed Book 1065, page 577, and are for angular calculations only. All 5/8" steel pins set are 30" long with plastic cap marked "E.R.D. 7142".

Pertinent documents: tax maps: 17-07; deeds: 1065/577, 1050/218, 898/325, 898/319, 898/317, 474/427, 736/88, 1064/357, 793/179, 860/223; Plat Book 9, page 11; surveys by: Earl R. Donaker, W.J. Biedenbach, R.L. Daniels, John R. Marshall, A.T. Connor, R.B. Pinnick, Charles R. Harkness.

Prior deed: 1065/577.

Description and plat by Landmark Surveys, Earl R. Donaker, Professional Surveyor, #7142, from a survey of the premises in the month of April, in the year of our Lord one thousand nine hundred and ninety-three.

OFFICE COPY
NOT RECORDABLE

DESCRIPTION APPROVED
FOR AUDITOR'S TRANSFER

BY A. L. Lill

4-19-93

JERRY S. HENDERSON, CHARLES E. & WILMA J. NORMAN,
DAVID A. & RUTH ANN COULSON 1.644 Acres

TRACT 4

Being 1.644 acres, more or less, part of parcel 17-07-01-09-002, in Lot 2 of Sibleys Subdivision, of township 1 north, range 8 west, United States Military Lands, in the township of Falls, in the county of Muskingum, in the State of Ohio, and more particularly described as follows:

Commencing at an axle found at the northeast corner of Lot 18, Northbrook, P.B. 9, page 11;

thence, along the property line of Joseph & Kimberly Buckey, 1064/357, the following 4 courses:

1. thence, S.85°21'51"E. 406.40' to a 5/8" steel pin found;
2. thence, N.05°32'47"E. 50.01' to a 5/8" steel pin found;
3. thence, N.05°32'47"E. 1774.27' to a point in a stream;
4. thence, S.88°31'47"W. 331.21' to a point in a stream, said point being the TRUE POINT OF BEGINNING;

thence, continuing along the property line of Joseph & Kimberly Buckey, 1064/357, S.88°31'47"W. 109.27' to a point in a stream;

thence, along the property line of East Central Ohio Realty, 1064/325, S.86°54'29"W. 56.71' to a point in a stream;

thence, through the property of Jerry S. Henderson, Charles E. & Wilma J. Norman, David A. & Ruth Ann Coulson, 1065/577, the following 3 courses:

1. thence, N.05°33'59"E. 24.44' to a 5/8" steel pin found;
2. thence, continuing N.05°33'59"E. 75.62' to a 5/8" steel pin set;
3. thence, continuing N.05°33'59"E. 347.00' to a point;

thence, along the property line of Virginia Osborn et.al., 1050/218, S.84°18'21"E. 12.14' to a 3/4" pipe found;

thence, along the property line of Charles E. & Wilma J. Norman, 898/325, 898/319, S.84°18'21"E. 152.23' to a 5/8" steel pin set;

thence, through the property of Jerry S. Henderson, Charles E. & Wilma J. Norman, David A. & Ruth Ann Coulson, 1065/577, the following 2 courses:

1. thence, S.05°32'48"W. 325.45' to a 5/8" steel pin set;
2. thence, continuing S.05°32'48"W. 99.32' to the TRUE POINT OF BEGINNING, containing 1.644 acres, more or less, and is subject to all easements, rights-of-way, or restrictions, whether recorded or implied.

Bearings are based on Deed Book 1065, page 577, and are for angular calculations only. All 5/8" steel pins set are 30" long with plastic cap marked "E.R.D. 7142".

Pertinent documents: tax maps: 17-07; deeds: 1065/577, 1050/218, 898/325, 898/319, 898/317, 474/427, 736/88, 1064/357, 793/179, 860/223; Plat Book 9, page 11; surveys by: Earl R. Donaker, W.J. Biedenbach, R.L. Daniels, John R. Marshall, A.T. Connor, R.B. Pinnick, Charles R. Harkness.

Prior deed: 1065/577.

Description and plat by Landmark Surveys, Earl R. Donaker, Professional Surveyor, #7142, from a survey of the premises in the month of April, in the year of our Lord one thousand nine hundred and ninety-three.

**OFFICE COPY
NOT RECORDABLE**

DESCRIPTION APPROVED
FOR AUDITOR'S TRANSFER

BY A. L. Hill
4-19-93

727 Cambridge Road
Coshocton, Ohio 43812

LANDMARK SURVEYS
EARL R. DONAKER, P.S.

(614) 623-0993
1-800-842-3264

JERRY S. HENDERSON, CHARLES E. & WILMA J. NORMAN,
DAVID A. & RUTH ANN COULSON 1.564 Acres

TRACT 5

Being 1.564 acres, more or less, part of parcel 17-07-01-09-002, in Lot 2 of Sibleys Subdivision, of township 1 north, range 8 west, United States Military Lands, in the township of Falls, in the county of Muskingum, in the State of Ohio, and more particularly described as follows:

Commencing at an axle found at the northeast corner of Lot 18, Northbrook, P.B. 9, page 11;

thence, along the property line of Joseph & Kimberly Buckey, 1064/357, the following 4 courses:

1. thence, S.85°21'51"E. 406.40' to a 5/8" steel pin found;
2. thence, N.05°32'47"E. 50.01' to a 5/8" steel pin found;
3. thence, N.05°32'47"E. 1774.27' to a point in a stream;
4. thence, S.88°31'47"W. 165.60' to a point in a stream, said point being the TRUE POINT OF BEGINNING;

thence, continuing along the property line of Joseph & Kimberly Buckey, 1064/357, S.88°31'47"W. 165.61' to a point in a stream;

thence, through the property of Jerry S. Henderson, Charles E. & Wilma J. Norman, David A. & Ruth Ann Coulson, 1065/577, the following 2 courses:

1. thence, N.05°32'48"E. 99.32' to a 5/8" steel pin set;
2. thence, continuing N.05°32'48"E. 325.45' to a 5/8" steel pin set;

thence, along the property line of Charles E. & Wilma J. Norman, 898/325, 898/319, S.84°18'21"E. 164.37' to a 5/8" steel pin set;

thence, through the property of Jerry S. Henderson, Charles E. & Wilma J. Norman, David A. & Ruth Ann Coulson, 1065/577, the following 2 courses:

1. thence, S.05°32'47"W. 303.91' to a 5/8" steel pin set;
2. thence, continuing S.05°32'47"W. 100.21' to the TRUE POINT OF BEGINNING, containing 1.564 acres, more or less, and is subject to all easements, rights-of-way, or restrictions, whether recorded or implied.

Bearings are based on Deed Book 1065, page 577, and are for angular calculations only. All 5/8" steel pins set are 30" long with plastic cap marked "E.R.D. 7142".

Pertinent documents: tax maps: 17-07; deeds: 1065/577, 1050/218, 898/325, 898/319, 898/317, 474/427, 736/88, 1064/357, 793/179, 860/223; Plat Book 9, page 11; surveys by: Earl R. Donaker, W.J. Biedenbach, R.L. Daniels, John R. Marshall, A.T. Connor, R.B. Pinnick, Charles R. Harkness.

Prior deed: 1065/577.

Description and plat by Landmark Surveyor, Earl R. Donaker, Professional Surveyor, #7142, from a survey of the premises in the month of April, in the year of our Lord one thousand nine hundred and ninety-three.

DESCRIPTION APPROVED
FOR AUDITOR'S TRANSFER

BY R. L. Daniels
4-19-93

727 Cambridge Road
Coshocton, Ohio 43812



LANDMARK SURVEYS

EARL R. DONAKER, P.S.

(614) 623-0993
1-800-842-3264

JERRY S. HENDERSON, CHARLES E. & WILMA J. NORMAN,
DAVID A. & RUTH ANN COULSON 1.564 Acres

TRACT 5

Being 1.564 acres, more or less, part of parcel 17-07-01-09-002, in Lot 2 of Sibleys Subdivision, of township 1 north, range 8 west, United States Military Lands, in the township of Falls, in the county of Muskingum, in the State of Ohio, and more particularly described as follows:

Commencing at an axle found at the northeast corner of Lot 18, Northbrook, P.B. 9, page 11;

thence, along the property line of Joseph & Kimberly Buckey, 1064/357, the following 4 courses:

1. thence, S.85°21'51"E. 406.40' to a 5/8" steel pin found;
2. thence, N.05°32'47"E. 50.01' to a 5/8" steel pin found;
3. thence, N.05°32'47"E. 1774.27' to a point in a stream;
4. thence, S.88°31'47"W. 165.60' to a point in a stream, said point being the TRUE POINT OF BEGINNING;

thence, continuing along the property line of Joseph & Kimberly Buckey, 1064/357, S.88°31'47"W. 165.61' to a point in a stream;

thence, through the property of Jerry S. Henderson, Charles E. & Wilma J. Norman, David A. & Ruth Ann Coulson, 1065/577, the following 2 courses:

1. thence, N.05°32'48"E. 99.32' to a 5/8" steel pin set;
2. thence, continuing N.05°32'48"E. 325.45' to a 5/8" steel pin set;

thence, along the property line of Charles E. & Wilma J. Norman, 898/325, 898/319, S.84°18'21"E. 164.37' to a 5/8" steel pin set;

thence, through the property of Jerry S. Henderson, Charles E. & Wilma J. Norman, David A. & Ruth Ann Coulson, 1065/577, the following 2 courses:

1. thence, S.05°32'47"W. 303.91' to a 5/8" steel pin set;
2. thence, continuing S.05°32'47"W. 100.21' to the TRUE POINT OF BEGINNING, containing 1.564 acres, more or less, and is subject to all easements, rights-of-way, or restrictions, whether recorded or implied.

Bearings are based on Deed Book 1065, page 577, and are for angular calculations only. All 5/8" steel pins set are 30" long with plastic cap marked "E.R.D. 7142".

Pertinent documents: tax maps: 17-07; deeds: 1065/577, 1050/218, 898/325, 898/319, 898/317, 474/427, 736/88, 1064/357, 793/179, 860/223; Plat Book 9, page 11; surveys by: Earl R. Donaker, W.J. Biedenbach, R.L. Daniels, John R. Marshall, A.T. Connor, R.B. Pinnick, Charles R. Harkness.

Prior deed: 1065/577.

Description and plat by Landmark Surveyor Earl R. Donaker, Professional Surveyor, #7142, from a survey of the premises in the month of April, in the year of our Lord one thousand nine hundred and ninety-three.

OFFICE COPY
NOT RECORDABLE

DESCRIPTION APPROVED
FOR AUDITOR'S TRANSFER

BY Earl R. Donaker
4-19-93

727 Cambridge Road
Coshocton, Ohio 43812



LANDMARK SURVEYS

EARL R. DONAKER, P.S.

(614) 623-0993
1-800-842-3264

17-07-01-09-002

JERRY S. HENDERSON, CHARLES E. & WILMA J. NORMAN,
DAVID A. & RUTH ANN COULSON 1.486 Acres

N/A

TRACT 6

Being 1.486 acres, more or less, part of parcel 17-07-01-09-002, in Lot 2 of Sibleys Subdivision, of township 1 north, range 8 west, United States Military Lands, in the township of Falls, in the county of Muskingum, in the State of Ohio, and more particularly described as follows:

Commencing at an axle found at the northeast corner of Lot 18, Northbrook, P.B. 9, page 11;

thence, along the property line of Joseph & Kimberly Buckey, 1064/357, the following 3 courses:

1. thence, S.85°21'51"E. 406.40' to a 5/8" steel pin found;
2. thence, N.05°32'47"E. 50.01' to a 5/8" steel pin found;
3. thence, N.05°32'47"E. 1774.27' to a point in a stream, said point being the TRUE POINT OF BEGINNING;

thence, continuing along the property line of Joseph & Kimberly Buckey, 1064/357, S.88°31'47"W. 165.60' to a point in a stream;

thence, through the property of Jerry S. Henderson, Charles E. & Wilma J. Norman, David A. & Ruth Ann Coulson, 1065/577, the following 2 courses:

1. thence, N.05°32'47"E. 100.21' to a 5/8" steel pin set;
2. thence, continuing N.05°32'47"E. 303.91' to a 5/8" steel pin set;

thence, along the property line of Charles E. & Wilma J. Norman, 898/325, 898/319, S.84°18'21"E. 164.36' to a concrete monument found;

thence, along the property line of Charles V. Parr, 474/427, the following 2 courses:

1. thence, S.05°32'47"W. 282.38' to a 5/8" steel pin set;
2. thence, continuing S.05°32'47"W. 101.09' to the TRUE POINT OF BEGINNING, containing 1.486 acres, more or less, and is subject to all easements, rights-of-way, or restrictions, whether recorded or implied.

Bearings are based on Deed Book 1065, page 577, and are for angular calculations only. All 5/8" steel pins set are 30" long with plastic cap marked "E.R.D. 7142".

Pertinent documents: tax maps: 17-07; deeds: 1065/577, 1050/218, 898/325, 898/319, 898/317, 474/427, 736/88, 1064/357, 793/179, 860/223; Plat Book 9, page 11; surveys by: Earl R. Donaker, W.J. Biedenbach, R.L. Daniels, John R. Marshall, A.T. Connor, R.B. Pinnick, Charles R. Harkness.

Prior deed: 1065/577.

Description and plat by Landmark Surveyor Earl R. Donaker, Professional Surveyor, #7142, from a survey of the premises in the month of April, in the year of our Lord one thousand nine hundred and ninety-three.

OFFICE COPY
NOT RECORDABLE

DESCRIPTION APPROVED
FOR AUDITOR'S TRANSFER

BY

A. L. Smith
4-19-93

727 Cambridge Road
Coshocton, Ohio 43812



LANDMARK SURVEYS
EARL R. DONAKER, P.S.

ADDRESS N/A

SNR

(614) 623-0993
1-800-842-3264

JERRY S. HENDERSON, CHARLES E. & WILMA J. NORMAN,
DAVID A. & RUTH ANN COULSON

75' EASEMENT

Granting to the grantee, grantee's heirs, and assigns a 75' non-exclusive easement for ingress, egress, and regress to and from the 75' easement as described in Deed Book 1065/577, and beginning on the East line of Tract 1 and thence running in an Easterly direction to the East line of Tract 6 as shown on the plat thereof and being further described below;

Being a 75' non-exclusive easement, part of parcel 17-07-01-09-002, in Lot 2 of Sibleys Subdivision, of township 1 north, range 8 west, United States Military Lands, in the township of Falls, in the county of Muskingum, in the State of Ohio, and more particularly described as follows:

Commencing at an axle found at the northeast corner of Lot 18, Northbrook, P.B. 9, page 11;

thence, along the property line of Joseph & Kimberly Buckey, 1064/357, the following 3 courses:

1. thence, S.85°21'51"E. 406.40' to a 5/8" steel pin found;
2. thence, N.05°32'47"E. 50.01' to a 5/8" steel pin found;
3. thence, N.05°32'47"E. 1774.27' to a point in a stream;

thence, along the property line of Charles V. Parr, 474/427, and continuing N.05°32'47"E. 25.47' to a point, said point being the TRUE POINT OF BEGINNING of the 75' easement herein described;

thence, through the property of Jerry S. Henderson, Charles E. & Wilma J. Norman, David A. & Ruth Ann Coulson, 1065/577, the following 6 courses:

1. thence, S.88°13'35"W. 17.28' to a 5/8" steel pin found;
2. thence, S.88°13'35"W. 423.49' to a 5/8" steel pin found;
3. thence, continuing S.88°13'35"W. 56.52' to a 5/8" steel pin found;
4. thence, N.87°04'27"W. 254.87' to a 5/8" steel pin found;
5. thence, S.73°37'49"W. 718.54' to a point;
6. thence, S.05°35'29"W. 33.83' to a point in a stream;

thence, along the property line of East Central Ohio Realty, 1064/325 and along the north line of a 50' easement, 1065/577, S.72°49'48"W. 54.22' to a point in a stream;

thence, along the property line of Mutual Federal Savings & Loan Association, et.al., 860/223, N.05°35'29"E. 115.51' to a 5/8" steel pin set;

thence, through the property of Jerry S. Henderson, Charles E. & Wilma J. Norman, David A. & Ruth Ann Coulson, 1065/577, the following 8 courses:

1. thence, N.73°37'49"E. 355.82' to a 5/8" steel pin set;
2. thence, continuing N.73°37'49"E. 177.91' to a 5/8" steel pin set;
3. thence, continuing N.73°37'49"E. 221.24' to a point;
4. thence, S.87°04'27"E. 264.54' to a 5/8" steel pin set;
5. thence, N.88°13'35"E. 6.58' to a 5/8" steel pin set;
6. thence, continuing N.88°13'35"E. 165.84' to a 5/8" steel pin set;
7. thence, continuing N.88°13'35"E. 165.72' to a 5/8" steel pin set;
8. thence, continuing N.88°13'35"E. 165.71' to a 5/8" steel pin set;

thence, along the property line of Charles V. Parr, 474/427, S.05°32'47"W. 75.62' to the TRUE POINT OF BEGINNING and is subject to all easements, rights-of-way, or restrictions, whether recorded or implied.

Prior deed: 1065/577.

Bearings are based on Deed Book 1065, page 577, and are for angular calculations only. All 5/8" steel pins set are 30" long with plastic cap marked "E.R.D. 7142". Pertinent documents: tax maps: 17-07; deeds: 1065/577, 1050/218, 898/325, 898/319, 898/317, 474/427, 736/88, 1064/357, 793/179, 860/223; Plat Book 9, page 11; surveys by: Earl R. Donaker, W.J. Biedenbach, R.L. Daniels, John R. Marshall, A.T. Connor, R.B. Pinnick, Charles R. Harkness. Description and plat by Landmark Surveys, Earl R. Donaker, Professional Surveyor, #7142, from a survey of the premises in the month of April, in the year of our Lord one thousand nine hundred and ninety-three.

THIS PROPERTY IS SUBJECT TO ALL EASEMENTS, RIGHTS-OF-WAY, OR RESTRICTIONS, WHETHER RECORDED OR IMPLIED.

727 Cambridge Road
Coshocton, Ohio 43812

LANDMARK SURVEYS
EARL R. DONAKER, P.S.

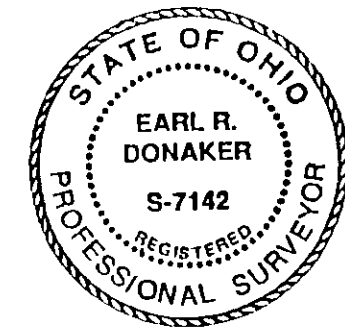
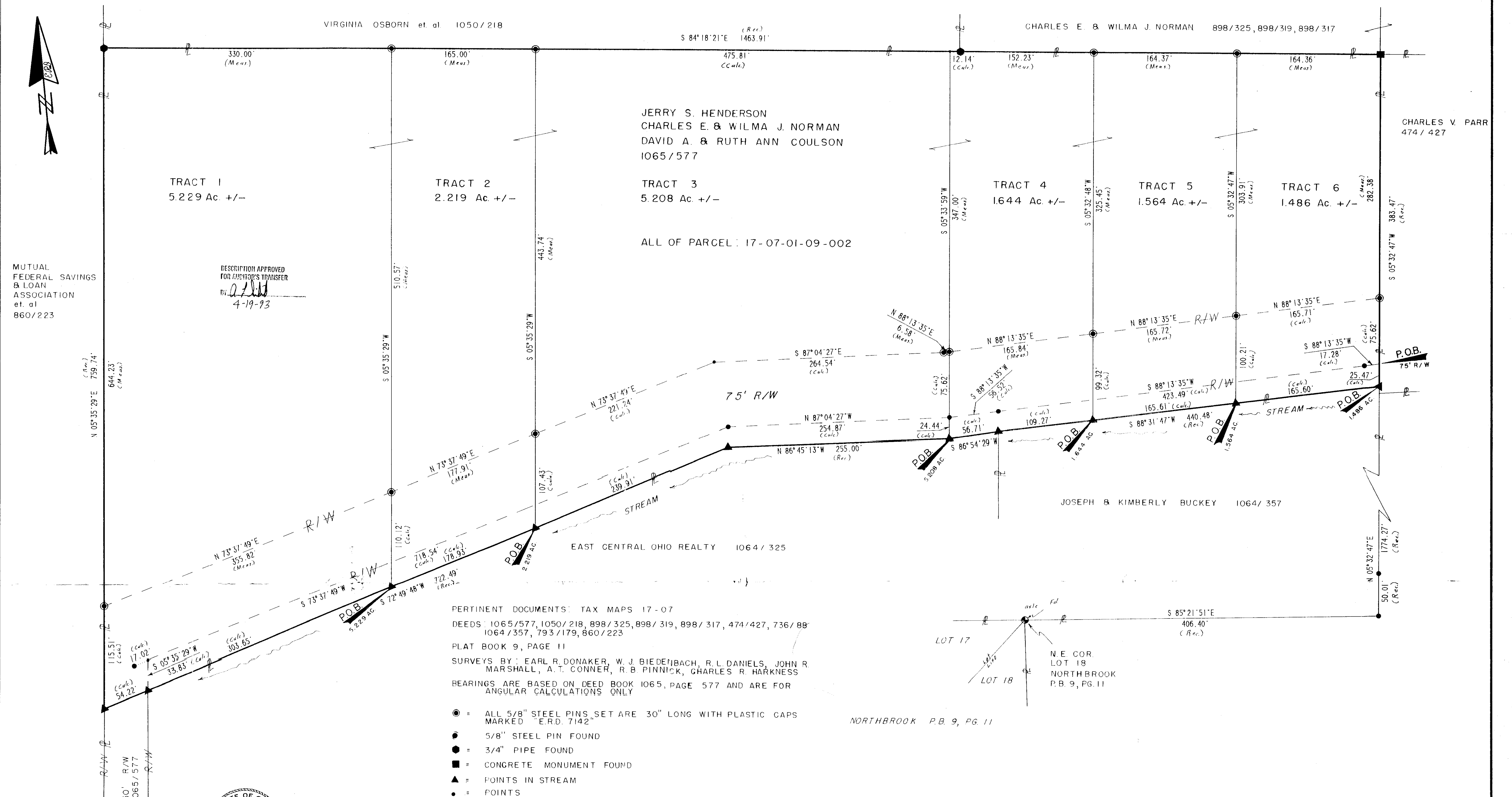
tel: (614) 623-0993
1-800-842-3264

ADDRESS N/A

0 25 50 75 100
Scale: 1" = 50'
ORIGINAL PLAT 24-36"

MUTUAL
FEDERAL SAVINGS
& LOAN
ASSOCIATION
et. al
860/223

DESCRIPTION APPROVED
FOR ADEPTOR'S TRANSFER
BY: *[Signature]*
4-19-93



OFFICE COPY
NOT RECORDED

JERRY S. HENDERSON et. al.
1065/577
PART LOT 2, SIBLEYS SUB.
T 1 N. R. 8 W.
UNITED STATES MILITARY LANDS
TOWNSHIP: FALLS
COUNTY: MUSKINGUM, OHIO
DATE: APRIL, 1993

"Remove not the old landmark." Proverbs 23:10