

Biedenbach Engineering, Inc.3010 East Pike
Zanesville, OH 43701

Civil Engineering and Land Surveying

Telephone (740) 453-4850
Fax (740) 450-1000
E-mail biedenbach@ee.net**BUNNELL HILL DEVELOPMENT****AUDITORS PARCEL NUMBERS**19-17-27-01-41-000 (PART)-0.778 ± ACRES
19-17-27-01-44-000 (PART)-0.283 ± ACRES
19-17-27-01-46-000 (PART)-0.738 ± ACRES

BEING PARTS OF LOTS 25 AND 26 OF MEADOWBROOK SUBDIVISION (PLAT BOOK 8, PAGE 47) AND A PART OF THE TRACT CONVEYED TO L. AND D. BISCHOFF (DEED VOLUME 366, PAGE 203) IN THE CITY OF ZANESVILLE, SITUATED IN QUARTER TOWNSHIP 1, TOWNSHIP 1, RANGE 8, OF THE UNITED STATES MILITARY LANDS, MUSKINGUM COUNTY, OHIO AND BEING FURTHER DESCRIBED AS FOLLOWS:

COMMENCING AT AN EXISTING IRON PIN (AXLE) AT THE NORTHEAST CORNER OF LOT 22 OF MEADOWBROOK SUBDIVISION (PLAT BOOK 8, PAGE 47);

THENCE WITH THE WEST LINE OF NORTHERN VALE SUBDIVISION (PLAT BOOK 9, PAGE 9) THE FOLLOWING FIVE COURSES AND DISTANCES;

- 1) SOUTH 04 DEGREES 02 MINUTES 30 SECONDS WEST 136.64 FEET TO AN EXISTING IRON PIN (AXLE);
- 2) SOUTH 04 DEGREES 10 MINUTES 51 SECONDS WEST 199.89 FEET TO AN EXISTING IRON PIN (AXLE);
- 3) SOUTH 05 DEGREES 09 MINUTES 18 SECONDS WEST 36.48 FEET TO AN EXISTING IRON PIN (AXLE) AT THE NORTHEAST CORNER OF THE TRACT CONVEYED TO LUTHER L. AND DONNA BISCHOFF (VOLUME 366, PAGE 203);
- 4) SOUTH 04 DEGREES 08 MINUTES 00 SECONDS WEST 163.56 FEET TO AN EXISTING IRON PIN (AXLE);
- 5) SOUTH 04 DEGREES 17 MINUTES 25 SECONDS WEST 45.65 FEET TO A POINT, SAID POINT BEING THE PLACE OF BEGINNING OF THE TRACT HEREIN INTENDED TO BE DESCRIBED;

THENCE CONTINUING WITH THE WEST LINE NORTHERN VALE SUBDIVISION (EAST LINE OF BISCHOFF TRACT), SOUTH 04 DEGREES 17 MINUTES 25 SECONDS WEST 54.31 FEET TO AN EXISTING IRON PIN (AXLE);

THENCE CONTINUING WITH THE SAID WEST LINE, SOUTH 04 DEGREES 17 MINUTES 38 SECONDS WEST 99.86 FEET TO AN EXISTING IRON PIN (AXLE);

THENCE CONTINUING WITH THE SAID WEST LINE, SOUTH 04 DEGREES 12 MINUTES 57 SECONDS WEST 200.92 FEET TO AN EXISTING IRON PIN (5/8 INCH REBAR) ON THE NORTH RIGHT OF WAY LINE OF STATE ROUTE 60;

THENCE WITH THE SAID NORTH RIGHT OF WAY LINE, NORTH 51 DEGREES 59 MINUTES 46 SECONDS WEST 350.75 FEET TO A POINT;

THENCE LEAVING THE NORTH RIGHT OF WAY LINE OF STATE ROUTE 60 AND TRAVERSING THROUGH LOTS 25 AND 26 OF MEADOWBROOK SUBDIVISION (PLAT BOOK 8, PAGE 47) AND A TRACT CONVEYED TO L. AND D. BISCHOFF (DEED VOLUME 366, PAGE 203) THE FOLLOWING SIX COURSES AND DISTANCES;

- 1) NORTH 23 DEGREES 09 MINUTES 30 SECONDS EAST 30.92 FEET TO A POINT;
- 2) NORTH 51 DEGREES 59 MINUTES 33 SECONDS WEST 19.85 FEET TO A POINT;
- 3) NORTH 23 DEGREES 10 MINUTES 08 SECONDS EAST 147.66 FEET TO A POINT;
- 4) SOUTH 67 DEGREES 08 MINUTES 46 SECONDS EAST 80.63 FEET TO A POINT;
- 5) NORTH 23 DEGREES 12 MINUTES 33 SECONDS EAST 62.11 FEET TO A POINT;
- 6) SOUTH 66 DEGREES 47 MINUTES 27 SECONDS EAST 162.46 FEET TO THE PLACE OF BEGINNING.

CONTAINING 1.799 MORE OR LESS ACRES, SUBJECT TO ALL APPLICABLE EASEMENTS.

BEARINGS ARE BASED ON THE PREVIOUS SURVEY OF THE CITY OF ZANESVILLE ANNEXATION PLAT OF A PART OF MEADOWBROOK SUBDIVISION DATED MAY 2000 BY LINN ENGINEERING AND FROM THE RIGHT OF WAY PLANS FOR STATE ROUTE 60.

I HEREBY CERTIFY TO THE BEST OF MY KNOWLEDGE AND BELIEF THE SURVEY AND DESCRIPTION TO BE CORRECT AND PREPARED BY ME, THIS 1ST DAY OF JULY 2003.

MICHAEL D. NICHOLS
REGISTERED SURVEYOR 6923

DESCRIPTION APPROVED
FOR AUDITOR'S TRANSFER

BY K. Buckley
8-13-2003

17-27-01-44
17-27-01-46
17-27-01-41

SURVEY FOR BUNNELL HILL DEVELOPMENT

BEING PARTS OF LOTS 25 AND 26 OF MEADOWBROOK SUBDIVISION (PLAT BOOK 8, PAGE 47), AND A PART OF THE TRACT CONVEYED TO L. AND D. BISCHOFF (DEED VOLUME 366, PAGE 203) IN THE CITY OF ZANESVILLE, SITUATED IN QUARTER TOWNSHIP 1, RANGE 8, OF THE UNITED STATES MILITARY LANDS, MUSKINGUM COUNTY, OHIO.

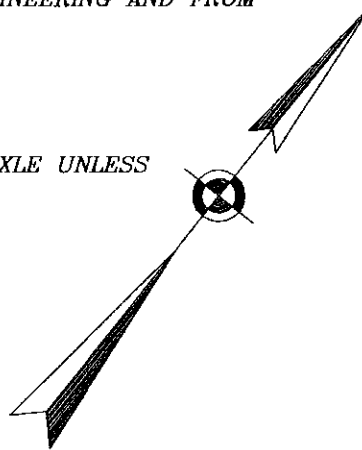
BEARINGS ARE BASED ON THE PREVIOUS SURVEY OF THE CITY OF ZANESVILLE ANNEXATION PLAT OF A PART OF MEADOWBROOK SUBDIVISION DATED MAY 2000 BY LINN ENGINEERING AND FROM THE R/W PLANS FOR STATE ROUTE 60.

RESEARCH:

P. B. 8, PG. 47
P. B. 9, PG. 9
SURVEY PLAT OF CITY OF
ZANESVILLE ANNEXATION
PLAT- LINN ENG.
RIGHT OF WAY PLANS-ST.
RT. 60 (SH.5 & 6 OF 9)
MUSKINGUM CO. TAX MAP

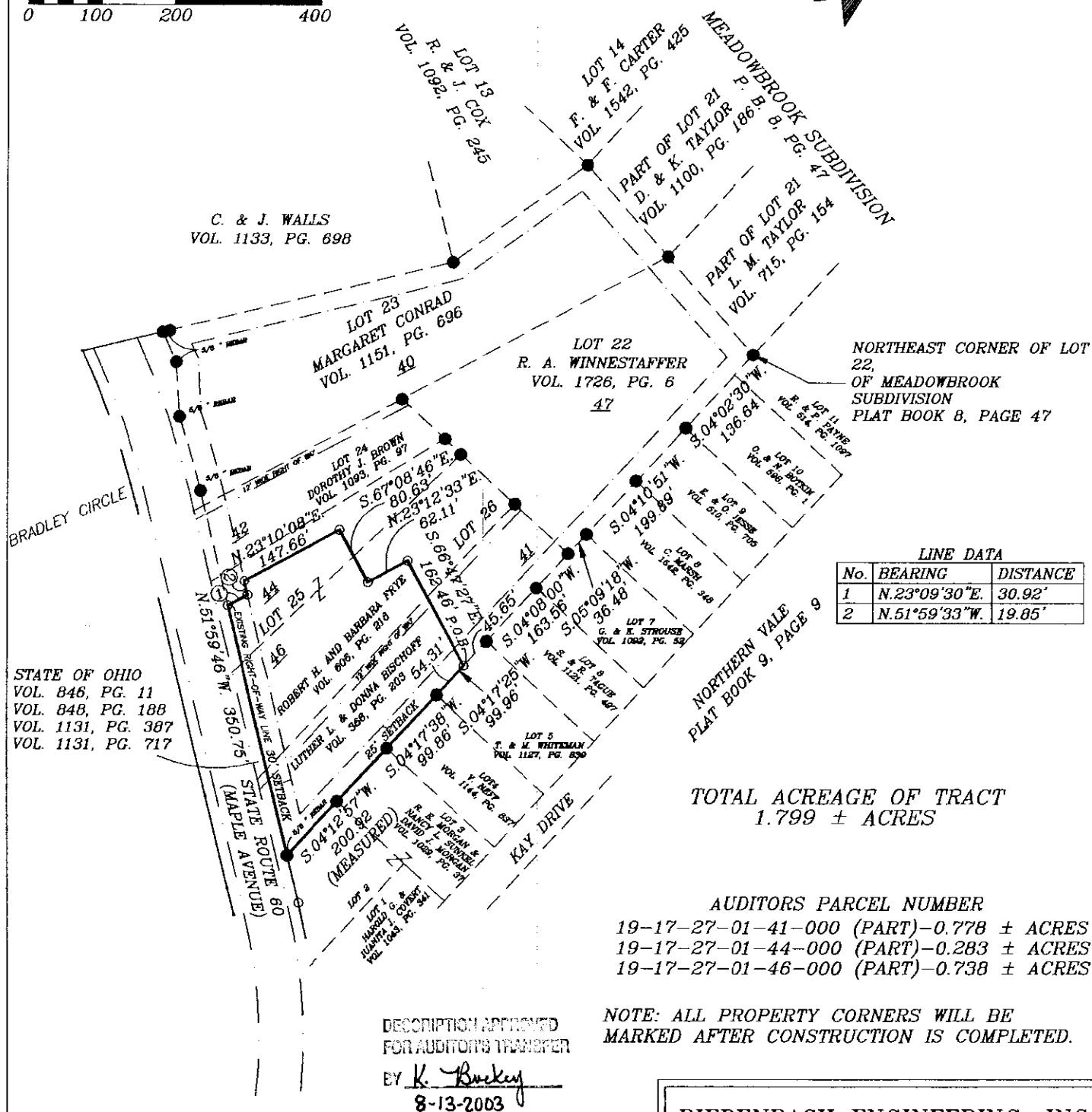
LEGEND

- EXISTING IRON PIN (AXLE UNLESS OTHERWISE SHOWN)
- ⊙ IRON PIN SET (5/8" REBAR W/CAP)
- ANGLE POINTS



SCALE 1"=200'

0 100 200 400



TOTAL ACREAGE OF TRACT
1.799 ± ACRES

AUDITORS PARCEL NUMBER

19-17-27-01-41-000 (PART)-0.778 ± ACRES
19-17-27-01-44-000 (PART)-0.283 ± ACRES
19-17-27-01-46-000 (PART)-0.738 ± ACRES

NOTE: ALL PROPERTY CORNERS WILL BE MARKED AFTER CONSTRUCTION IS COMPLETED.

DESCRIPTION APPROVED
FOR AUDITOR'S TRANSFER
BY *K. Buckley*
8-13-2003

I HEREBY CERTIFY TO THE BEST OF MY
KNOWLEDGE AND BELIEF THAT ABOVE PLAT AND
SURVEY TO BE CORRECT AS PREPARED BY ME,
THIS 1st DAY OF JULY, 2003

MICHAEL D. WOLFS
REGISTERED SURVEYOR #6923

BIEDENBACH ENGINEERING, INC.
ZANESVILLE, OHIO
(740) 453-4850

DRAWN BY:
AJS

DATE:
07-01-03

SCALE:
1"=200'

CHECKED BY:
MDN

JOB NO:
4962

DRAWING NO:
D:\4962\4962