



## **Linn Engineering, Inc.**

*Civil Engineering Consultants*

740-452-7434 • 1-800-891-7434

534 Market Street • P.O. Box 2086 • Zanesville, Ohio 43702-2086

### **LONGHILL, INC. (DR 998-395)**

**Laurel Ridge Subdivision Landowners Association**

**1.23 Acres**

Situated in the State of Ohio, County of Muskingum, Township of Falls, bounded and described as follows:

Being a part of the First Quarter Township, T-1, R-8, and a part of the Second Quarter Township, T-1, R-7 of the United States Military Lands, also being part of the lands now owned by Longhill, Inc. (Deed Record 998-395) and being more particularly described as follows:

Beginning at an iron pin found on the southwest corner of Lot 16 of Laurel Ridge Subdivision as designated and delineated in Muskingum County Plat Book 16, pages 81-85;

thence South 86 degrees 59 minutes 37 seconds East a distance of 416.42 feet to a point;

thence North 02 degrees 41 minutes 27 seconds East a distance of 60.81 feet to an iron pin found;

thence South 86 degrees 16 minutes 58 seconds East a distance of 911.60 feet to a railroad spike found;

thence North 03 degrees 26 minutes 37 seconds East a distance of 660.20 feet to a point;

thence South 86 degrees 33 minutes 23 seconds East a distance of 10.00 feet to a point;

thence South 03 degrees 26 minutes 37 seconds West a distance of 661.25 feet to a point;

thence North 86 degrees 16 minutes 58 seconds West a distance of 920.59 feet to an iron pin found;

thence South 02 degrees 41 minutes 27 seconds West a distance of 60.79 feet to a stone found;

thence North 86 degrees 59 minutes 37 seconds West a distance of 418.43 feet to an iron pin found;

thence North 02 degrees 44 minutes 25 seconds East a distance of 2180.02 feet to a railroad spike found on the south line of Richey Road (TR-147);

thence along said south line of Richey Road the following two courses:

1) South 87 degrees 15 minutes 54 seconds East a distance of 416.54 feet to a railroad spike found on the First Quarter/Second Quarter Township line;

2) South 86 degrees 52 minutes 35 seconds East a distance of 555.16 feet to a railroad spike found at the intersection with the west line of Dresden Road (CR-2);

thence along the west line of said Dresden Road the following four courses:

1) South 21 degrees 37 minutes 51 seconds East a distance of 291.90 feet to a railroad spike found;

2) South 23 degrees 35 minutes 01 seconds East a distance of 385.18 feet to a railroad spike found;

3) South 18 degrees 25 minutes 18 seconds East a distance of 253.89 feet to a railroad spike found;

4) South 03 degrees 26 minutes 37 seconds West a distance of 513.52 feet to a railroad spike found;

thence North 86 degrees 33 minutes 23 seconds West a distance of 10.00 feet to a point;

thence North 03 degrees 26 minutes 37 seconds East a distance of 242.44 feet to an iron pin found;

thence South 87 degrees 41 minutes 35 seconds West a distance of 40.54 feet to an iron pin found on the east line of Longhill Drive;

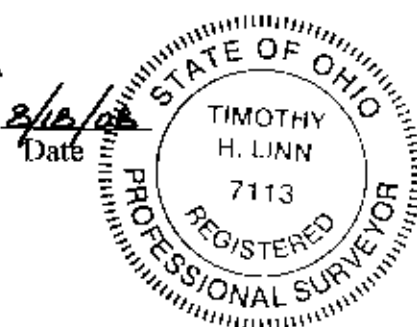
thence along said east line of Longhill Drive the following three courses:

1) North 19 degrees 14 minutes 23 seconds West a distance of 7.29 feet to a point;  
2) North 21 degrees 12 minutes 55 seconds West a distance of 59.94 feet to a point;  
3) North 21 degrees 39 minutes 04 seconds West a distance of 132.30 feet to an iron pin set;  
thence North 78 degrees 54 minutes 37 seconds East a distance of 121.78 feet to an iron pin set;  
thence North 07 degrees 40 minutes 27 seconds West a distance of 154.90 feet to a railroad spike found;  
thence North 20 degrees 52 minutes 48 seconds West a distance of 279.04 feet to a railroad spike found;  
thence North 23 degrees 25 minutes 04 seconds West a distance of 229.38 feet to a railroad spike found;  
thence North 21 degrees 51 minutes 41 seconds West a distance of 245.97 feet to a railroad spike found;  
thence North 21 degrees 37 minutes 51 seconds West a distance of 70.00 feet to a railroad spike found;  
thence North 86 degrees 52 minutes 35 seconds West a distance of 572.42 feet to a railroad spike found on the west line of said Laurel Ridge Subdivision;  
thence North 87 degrees 15 minutes 54 seconds West a distance of 391.81 feet to a point;  
thence South 02 degrees 44 minutes 25 seconds West a distance of 2169.18 feet to the place of beginning;  
containing 1.23 acres, more or less, subject to all legal road right of ways and applicable easements, written or implied.

Bearings are based on the north line of Laurel Ridge Subdivision as designated and delineated in Muskingum County Plat Book 16, page 81-85 as bearing South 86 degrees 52 minutes 35 seconds East.

This description is written based on a survey completed July 25, 2008 by Timothy H. Linn, Reg. No. 7113.

**OFFICE COPY**  
**NOT RECORDABLE**  
Timothy H. Linn  
Reg. No. 7113



PARCEL NO.:

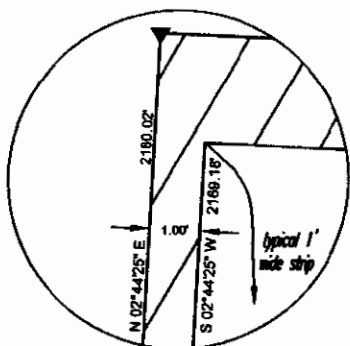
17-17-29-01-01-000 (0.16 ac.)

17-17-29-02-01-000 (1.07 ac.)

DESCRIPTION

APPROVED

By: 



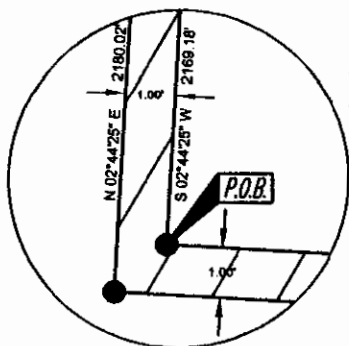
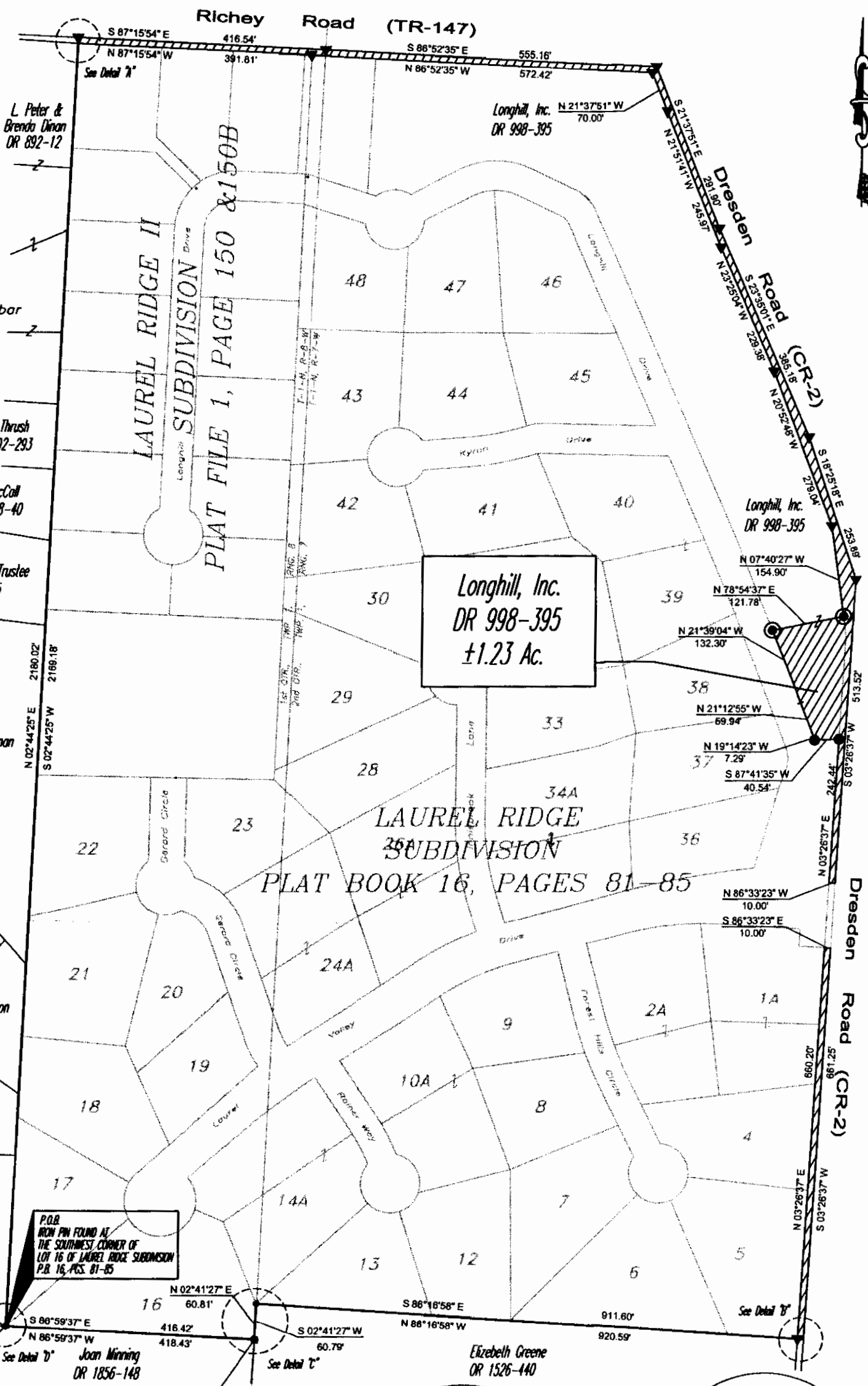
Detail A

### LEGEND

- Iron Pin Set, 5/8" rebar
- Iron Pin Found
- ⊠ Stone Found
- ▼ Railroad Spike Found
- Property Hook

### REFERENCES

DR 998-395  
Plat Book 16, Pages 81-85



Detail D

### SITUATED IN

The State of Ohio, County of Muskingum Township of Falls, and being a part of 1st Quarter Township, T1, R8 and 2nd Quarter Township, T1, R7, U.S.M.L.

### BASIS OF BEARING

Bearings are based on the north line of Laurel Ridge Subdivision, Plat Book 16, Pages 81-85 as being S86°52'35"E.

### DESCRIPTION

APPROVED  
By: *[Signature]* 8/2/08

### PARCEL NO.

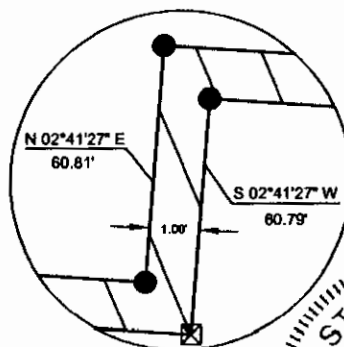
Part of: 17-17-29-01-01-000 (±0.16 ac.)  
Part of: 17-17-29-02-01-000 (±1.07 ac.)

### GRAPHIC SCALE

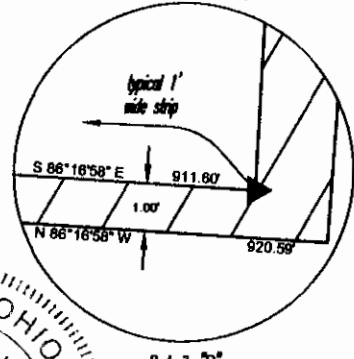


( IN FEET )

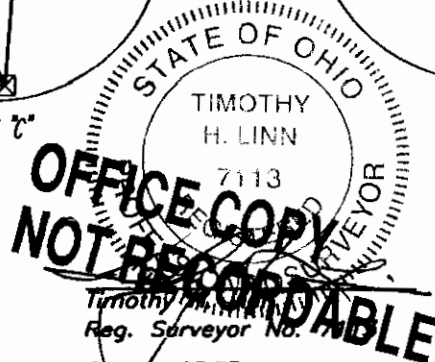
1 inch = 200 ft.



Detail C



Detail B



Project No.: 17-29 LH SPITE



Linn Engineering, Inc.  
Civil Engineering Consultants  
P.O. Box 2086 Zanesville, Ohio 43702-2086

740-452-7434