

Eagle Crest, Ltd. Lot 8

Situated in the State of Ohio, County of Muskingum, Township of Falls, bounded and described as follows:

Being a part of Quarter Township 3, Township 1 North, Range 7 West, United States Military Lands and being more particularly described as follows:

Beginning at an iron pin set on the northwest corner of Lot 5 of Walter Taylor's Subdivision as the same is designated and delineated on Muskingum County Plat Book 8, Page 93;

thence along the west line of said Walter Taylor's Subdivision South 04 degrees 46 minutes 18 seconds West 60.96 feet to an iron pin set on the southeast corner of said Lot 8 of Eagle Crest Subdivision as the same is designated and delineated on Muskingum County Plat Book 17, page 92-94;

thence along the south line of said Lot 8 North 84 degrees 54 minutes 52 seconds West 98.54 feet to an iron pin set on the east right of way of Eagle Crest Drive;

thence continuing along said east right of way the following four courses:

- 1) North 04 degrees 41 minutes 19 seconds East 81.08 feet to an iron pin set;
- 2) on a curve to the right having a radius of 75.00 feet, a central angle of 43 degrees 06 minutes 25 seconds and a chord bearing North 26 degrees 14 minutes 31 seconds East a distance of 55.11 feet to an iron pin set;
- 3) North 47 degrees 47 minutes 43 seconds East 67.17 feet to an iron pin set;
- 4) on a curve to the left having a radius of 125.00 feet, a central angle of 43 degrees 49 minutes 10 seconds and a chord bearing North 25 degrees 53 minutes 09 seconds East a distance of 93.29 feet to an iron pin set on the west line of lands now owned by J.L. and D.F. Rogers (DR 522-387);

thence along said Rogers' west line South 05 degrees 01 minutes 58 seconds West 208.07 feet to the place of beginning;

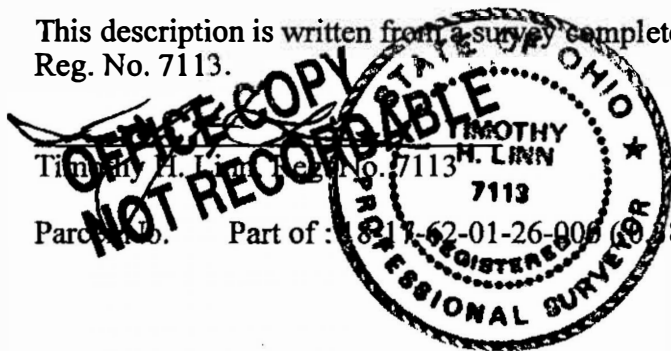
containing 0.38 acres, more or less, subject to all legal road right of ways and applicable easements, written or implied.

Iron pins set are 5/8 inch diameter by 30 inch long rebar with plastic identification caps.

Bearings are based on the south line of East Military Road as bearing South 85 degrees 33 minutes 16 seconds East.

This description is written from a survey completed on August 30, 1999 by Timothy H. Linn, Reg. No. 7113.

Part of: 8217-62-01-26-006 (0.38 ac.)



8/30/99
Date

DESCRIPTION APPROVED
FOR AUDITOR'S TRANSFER
BY [Signature]
8-30-99

17-62-01-26-501 3008 EAGLE CREST DR

17-62-01-36-500 3018 EAGLE CREST DR

SITUATED IN

The State of Ohio, County of Muskingum, Township of Falls
and being a part of Quarter Township 3, T-1-N, R-7-W,
United States Military Lands.

Wm. E. & Emilie A. Kohler
DR 1012-483

Eagle Crest Limited
DR 1148-715

DELTA = 43°06'25"
RADIUS = 75.00'
LENGTH = 56.43'
BRG. = N26°14'31"E
CHD. = 55.11'

Jesse L. & Dolores F. Rogers
DR 522-387

DELTA = 43°49'10"
RADIUS = 125.00'
LENGTH = 95.60'
BRG. = N25°53'09"E
CHD. = 93.29'

UNIT 3018
0.05 ACRES MORE OR LESS

UNIT 3008
0.05 ACRES MORE OR LESS

COMMON AREA LOT 8
0.28 ACRES MORE OR LESS

LOT 8
0.38 ACRES MORE OR LESS

Eagle Crest Limited
DR 1148-715
LOT 1

LEGEND

- Iron Pin Set, 5/8" rebar
- Iron Pin Found
- Axle Found

LOT 2

Eagle Crest Limited
DR 1148-715
LOT 3

REFERENCES

DR 1138-342
DR 1068-83
DR 1012-483
Plat Book 8, Page 65

PARCEL NO.

Part of: 18-17-62-01-26-000 (±0.38 ac.)

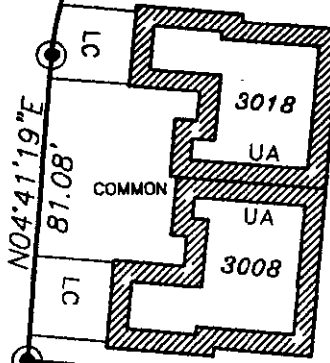
GRAPHIC SCALE



(IN FEET)
1 inch = 50 ft.

EAGLE CREST DRIVE

COMMON
Eagle Crest Limited
DR 1148-715
LOT 8
±0.38 Ac.



N04°41'19"E 120.19'

N04°41'19"E 120.19'

N04°41'19"E 120.19'

N04°41'19"E 120.19'

N04°41'19"E 120.19'

N04°41'19"E 120.19'

N04°41'19"E 120.19'

N04°41'19"E 120.19'

N04°41'19"E 120.19'

N04°41'19"E 120.19'

N04°41'19"E 120.19'

N04°41'19"E 120.19'

N04°41'19"E 120.19'

N04°41'19"E 120.19'

N04°41'19"E 120.19'

N04°41'19"E 120.19'

N04°41'19"E 120.19'

N04°41'19"E 120.19'

N04°41'19"E 120.19'

N04°41'19"E 120.19'

N04°41'19"E 120.19'

N04°41'19"E 120.19'

N04°41'19"E 120.19'

N04°41'19"E 120.19'

N04°41'19"E 120.19'

N04°41'19"E 120.19'

N04°41'19"E 120.19'

BASIS OF BEARING

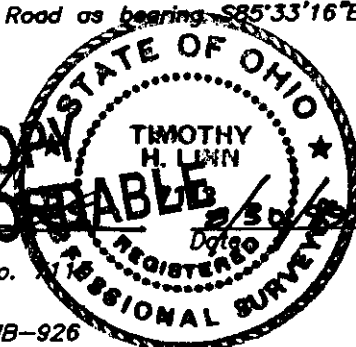
Bearings are based on the south line of
East Military Road as bearing S85°33'16"E.

DESCRIPTION APPROVED
FOR AUDITOR'S TRANSFER
BY [Signature]

OFFICE COPY
NOT RECORDED

Reg. Surveyor No. 1111

Project No.: KEMB-926



WALTER TAYLOR'S SUB.
P.B. 8, PG. 93

Linn Engineering, Inc. 740-452-7434
Civil Engineering Consultants
P.O. Box 2086 Zanesville, Ohio 43702-2086