



## Linn Engineering, Inc.

*Civil Engineering Consultants*

740-452-7434 • FAX 740-452-5198

534 Market Street • P.O. Box 2086 • Zanesville, Ohio 43702-2086

ADDRESS N/A

Situated in the State of Ohio, County of Muskingum, Township of Falls, bounded and described as follows:

Being a part of Quarter Township 4, Township 1 North, Range 8 West, United States Military Lands and being bounded and described as follows:

Beginning at a stone found on the southeast corner of Lot 2 of Dillon Subdivision (DR "I" pg.711), the same corner being on the City of Zanesville and the Falls Township line;

thence along the east line of President and Board of Trustees of Ohio University (DR 538-801) South 00 degrees 00 minutes 00 seconds West 1030.92 feet to an iron pin found at the southwest corner of Lot 20 of The Village at Joe's Run Subdivision (Plat File 1, Pg. 144 ), and the principal place of beginning of the property to be conveyed;

thence along the City of Zanesville Corporation and Falls Township line the following eight courses:

- 1) North 51 degrees 21 minutes 22 seconds East 279.28 feet to an iron pin found on southeast corner of Lot 21 of said Village at Joe's Run Subdivision;
- 2) North 65 degrees 56 minutes 29 seconds East 200.00 feet to an iron pin found on the south line of Lot 20 of said Village at Joe's Run Subdivision;
- 3) North 89 degrees 36 minutes 56 seconds East 115.90 feet to an iron pin found on the southeast corner of Lot 21 of said Village at Joe's Run Subdivision;
- 3) North 89 degrees 36 minutes 56 seconds East 54.10 feet to a point on the south line of Lot 22 of said Village at Joe's Run Subdivision;
- 4) North 90 degrees 00 minutes 00 seconds East 118.74 feet to an iron pin found on the southeast corner of Lot 22 of said Village at Joe's Run Subdivision;
- 5) North 00 degrees 00 minutes 00 seconds East 173.54 feet to an iron pin found on the southernmost point on Reserve "C" tract of said Village at Joe's Run Subdivision;
- 6) North 34 degrees 58 minutes 43 seconds East 223.25 feet to a point on the southeast line on Reserve "C" tract of said Village at Joe's Run Subdivision;
- 7) North 34 degrees 10 minutes 42 seconds East 130.20 feet to a point on the southeast line on Reserve "C" tract of said Village at Joe's Run Subdivision;
- 8) North 61 degrees 32 minutes 46 seconds East 55.47 feet, crossing Oak Meadow Lane, to an axle found on the southwest corner of Reserve "B" of Southwood Subdivision (Plat Book 8, Pg. 45);
- 9) North 88 degrees 32 minutes 32 seconds East 9.28 feet along the south line of Reserve "B" of Southwood Subdivision to an iron pin found;

thence leaving said line between the City of Zanesville and Fall Township South 42 degrees 42 minutes 44 seconds West 147.11 feet to a point on the west line of Joe's Run Subdivision (Plat Book 8 Pg. 8) ;

OFFICE COPY  
NOT RECORDABLE

thence South 25 degrees 14 minutes 00 seconds West 185.90 feet to a point on the northwest corner Adams Woodside Subdivision (Plat Book 8, Pg. 77);

thence along the west line of Adams Woodside Subdivision the following three courses:

- 1) South 13 degrees 45 minutes 00 seconds East 217.80 feet to a point;
- 2) South 54 degrees 30 minutes 00 seconds East 132.00 feet to a point;
- 3) South 20 degrees 30 minutes 00 seconds East 93.72 feet to a point on the north line of Katie Heights Subdivision (Plat Book 8, Pg. 7);

thence South 82 degrees 24 minutes 07 seconds West 13.34 feet to an iron pin found on the northwest corner of Katie Heights Subdivision and the northeast corner of American Rolling Mill Company (DR 268-612);

thence along the north line of the American Rolling Mill Co. the following five courses:

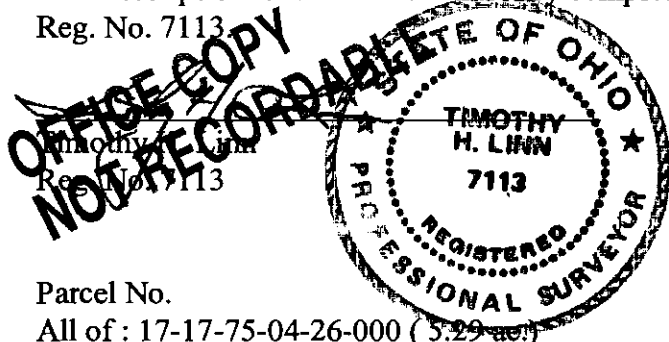
- 1) South 82 degrees 24 minutes 07 seconds West 348.06 feet to a point;
- 2) North 71 degrees 36 minutes 14 seconds West 131.65 feet to a point;
- 3) South 67 degrees 30 minutes 00 seconds West 134.64 feet to a point;
- 4) South 28 degrees 15 minutes 00 seconds West 137.28 feet to a point;
- 5) South 61 degrees 00 minutes 00 seconds West 330.00 feet to an iron pin found;

thence leaving said north line of the American Rolling Mill Co. and along the east line of President and Board of Trustees of Ohio University (DR 538-801) North 00 degrees 00 minutes 00 seconds East 242.51 feet to the principal place of beginning;

containing 5.29 acres, more or less, subject to all legal road right of ways and applicable easements, written or implied.

Bearings are based on the south part of the west line, of The Village at Joe's Run Subdivision (Plat File 1 Pg. 144), said part of the line which divides the City of Zanesville and Falls Township and being North 00 degrees 00 minutes 00 seconds East.

This description is written from a survey completed on September 15, 1995 by Timothy H. Linn, Reg. No. 7113



3/24/98  
Date

DESCRIPTION APPROVED  
FOR AUDITORS TRANSFER  
BY [Signature]  
3-25-98

Parcel No.

All of : 17-17-75-04-26-000 ( 5.29 ac.)

# SITUATED IN

Township of Falls, County of Muskingum,  
State of Ohio, and being a part of  
Quarter Twp. 4, T-1N, R-8W, U.S.M.D.,  
Muskingum County Deed Records.

## BASIS OF BEARINGS

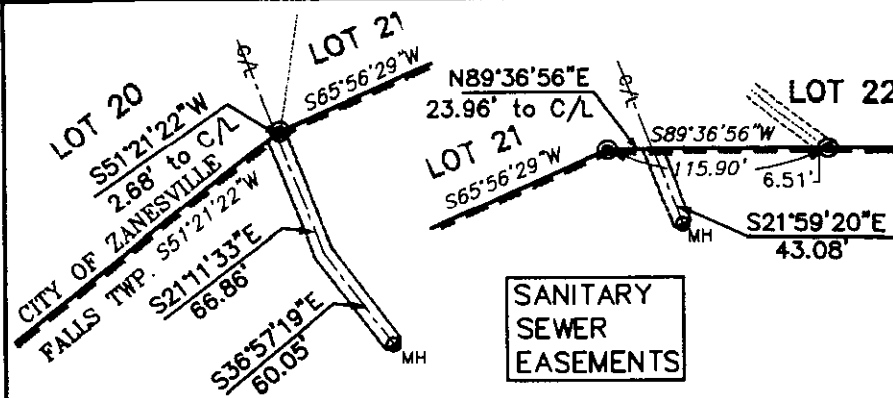
Bearings are based on the south part  
the west line, of The Village at Joe's  
Run Subdivision, (Plat File 1, Pg. 144),  
said part of the line which divides the  
City of Zanesville and Falls Township  
and being (N00°00'00"E).

## REFERENCES

DB I, Pg. 711  
Plat 1, Sheet 144  
DR 1113-537

DESCRIPTION APPROVED  
FOR AUDITORS TRANSFER  
BY *APR 20 1998*

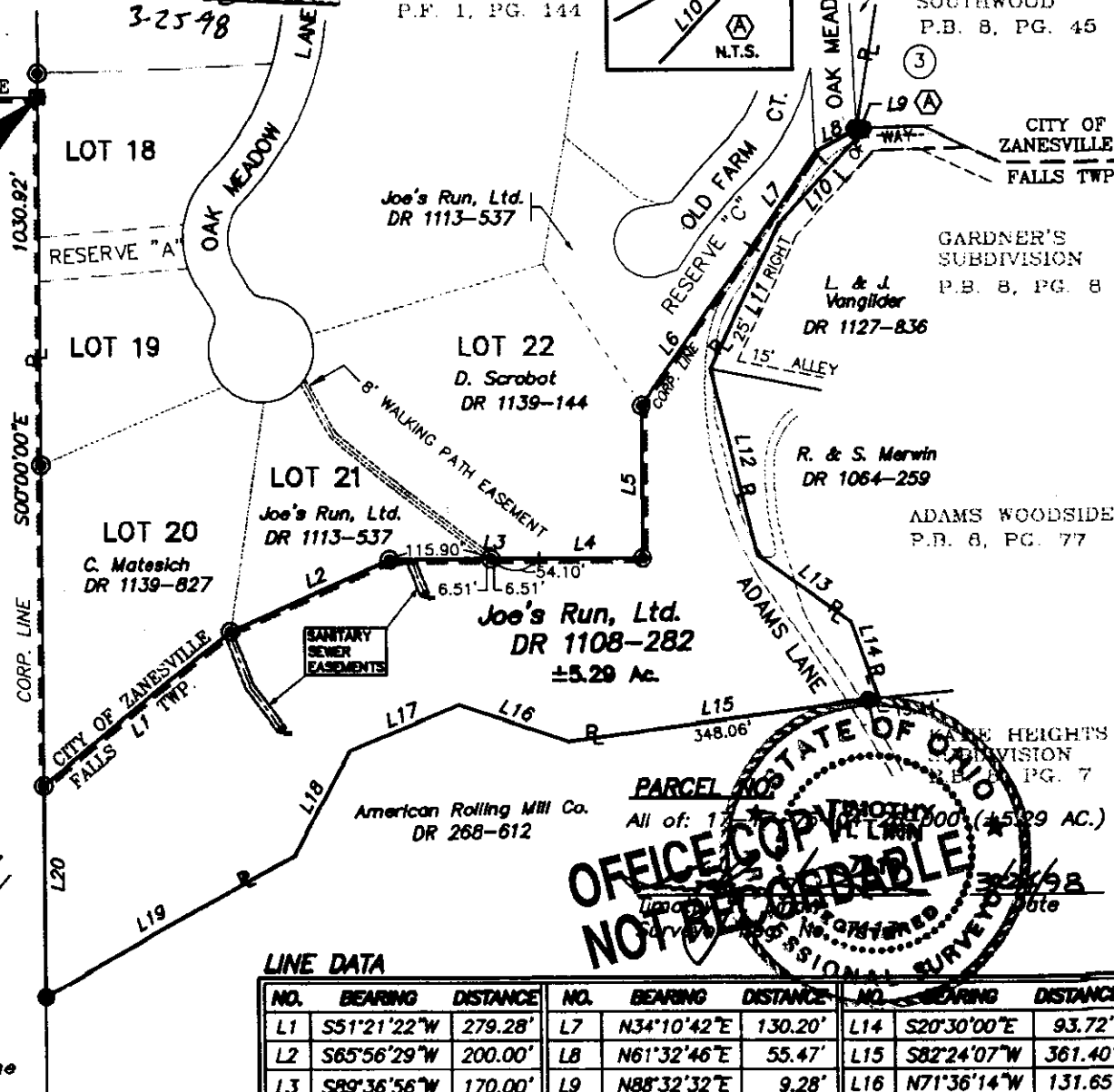
3-25-98



CITY OF ZANESVILLE  
FALLS TWP.

Stone Found  
Southeast Corner  
Lot No. 2  
Dillons Subdivision  
DR "I", Pg. 711

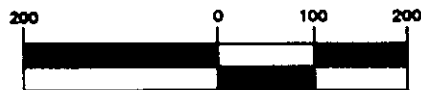
President and Board of Trustees  
of Ohio University  
DR 538-801



## LEGEND

- Iron Pin Set, 5/8" rebar, 30" long w/ plastic cap
- Iron Pin Found
- Axle Found
- Sanitary Manhole
- ☒ Stone Found
- Corp. Line

## GRAPHIC SCALE



( IN FEET )

1 inch = 200 ft.

## LINE DATA

NO.	BEARING	DISTANCE	NO.	BEARING	DISTANCE	NO.	BEARING	DISTANCE
L1	S51°21'22"W	279.28'	L7	N34°10'42"E	130.20'	L14	S20°30'00"E	93.72'
L2	S65°56'29"W	200.00'	L8	N61°32'46"E	55.47'	L15	S82°24'07"W	361.40'
L3	S89°36'56"W	170.00'	L9	N88°32'32"E	9.28'	L16	N71°36'14"W	131.65'
L4	N90°00'00"W	118.74'	L10	S42°59'44"W	147.11'	L17	S67°30'00"W	134.64'
L5	N00°00'00"E	173.54'	L11	S25°14'00"W	185.90'	L18	S28°15'00"W	137.28'
L6	N34°58'43"E	223.25'	L12	S13°45'00"E	217.80'	L19	S81°00'00"W	330.00'
			L13	S54°30'00"E	132.00'	L20	N00°00'00"E	242.51'

Project No.: JOES-726



Linn Engineering, Inc.  
Civil Engineering Consultants  
P.O. Box 2088 Zanesville, Ohio 43702-2088

740-452-7434