



Linn Engineering, Inc.

Civil Engineering Consultants

740-452-7434 • 1-800-991-7434 • FAX 740-452-5198

534 Market Street • P.O. Box 2086 • Zanesville, Ohio 43702-2086

ADDRESS N/A

SNR

Rogers - Plat 5

Situated in the State of Ohio, County of Muskingum, Township of Falls, bounded and described as follows:

OFFICE COPY
NOT RECORDABLE

Being a part of Quarter Township 4, Township 1 North, Range 8 West, United States Military Lands, being part of lands now owned by Edward G. and Dorothy Jean Rogers (DR 753-129) and being more particularly bounded and described as follows:

Beginning for reference at an iron pipe found on the southeast corner of Lot 1 of Katie Heights Subdivision as designated and delineated on Muskingum County Plat Book 8, Page 7;
thence along the south line of said Katie Heights Subdivision as designated and delineated on Muskingum County Plat Book 8, Page 7, North 88 degrees 02 minutes 34 seconds West 181.10 feet to a point in Adams Lane;

thence along the west line of lands now owned by Zanesville Metropolitan Housing Authority (ZMHA) (DR 1149-506) the following two courses:

- 1) South 02 degrees 06 minutes 59 seconds West 230.97 feet to an iron pin to be set after construction, passing an iron pin to be set after construction at 204.11 feet;
- 2) South 23 degrees 53 minutes 21 seconds East for a distance of 291.04 feet to a point on the north line of lands now owned by Edward G. and Dorothy Jean Rogers (DR 753-129), passing an iron pin to be set after construction at 277.00 feet;

thence along said Rogers' north line North 83 degrees 32 minutes 40 seconds East for a distance of 15.46 feet to an iron pin to be set after construction and the principal place of beginning;

thence continuing along said Rogers' north line North 83 degrees 32 minutes 40 seconds East for a distance of 142.50 feet to an iron pin to be set after construction;

thence through lands now owned by said Rogers South 59 degrees 25 minutes 00 seconds East for a distance of 46.66 feet to an iron pin to be set after construction on the west line of lands now owned by D. Lowe (DR 1071-471);

thence along said Lowe's west line South 22 degrees 52 minutes 23 seconds East for a distance of 119.61 feet to a point;

thence through said Rogers' lands the following three courses:

- 1) South 21 degrees 14 minutes 58 seconds West for a distance of 30.23 feet to a point;
- 2) South 31 degrees 23 minutes 00 seconds East for a distance of 100.59 feet to a point;
- 3) South 58 degrees 47 minutes 52 seconds East for a distance of 10.50 feet to an iron pin to be set after construction on said Lowe's west line;

thence along said Lowe's west line South 22 degrees 52 minutes 23 seconds East for a distance of 226.74 feet to an iron pin to be set after construction;

thence through said Rogers' lands the following eight courses:

- 1) North 57 degrees 16 minutes 57 seconds West for a distance of 114.38 feet to a point;

- 2) North 19 degrees 26 minutes 06 seconds West for a distance of 47.31 feet to a point;
- 3) North 58 degrees 47 minutes 52 seconds West for a distance of 62.79 feet to a point;
- 4) North 30 degrees 03 minutes 26 seconds West for a distance of 183.66 feet to a point;
- 5) North 21 degrees 14 minutes 58 seconds East for a distance of 53.78 feet to a point;
- 6) North 59 degrees 25 minutes 00 seconds West for a distance of 51.75 feet to a point;
- 7) North 38 degrees 53 minutes 19 seconds West for a distance of 61.73 feet to a point;
- 8) North 62 degrees 12 minutes 03 seconds West for a distance of 51.22 feet to the principal place of beginning;

containing 1.04 acres, more or less, subject to all legal road right of ways and applicable easements, written or implied.

Bearings are based on NAD 83, South Zone, Ohio State Plane Coordinate System, as per GPS Observations of Muskingum County GPS Monuments.

Iron pins set are 5/8 inch diameter by 30 inch long rebar with plastic identification caps.

This description is written from a survey completed on May 8, 2003 by Jack D. Newcome, Reg. No. 7321.

**OFFICE COPY
NOT RECORDABLE**

Jack D. Newcome
Reg. No. 7321

9-25-03
Date

DESCRIPTION APPROVED
FOR AUDIT AND TRANSFER
BY ASB

9-22-2003

Parcel No.

Part of: 18-17-76-01-03-000 (1.04 ac.)

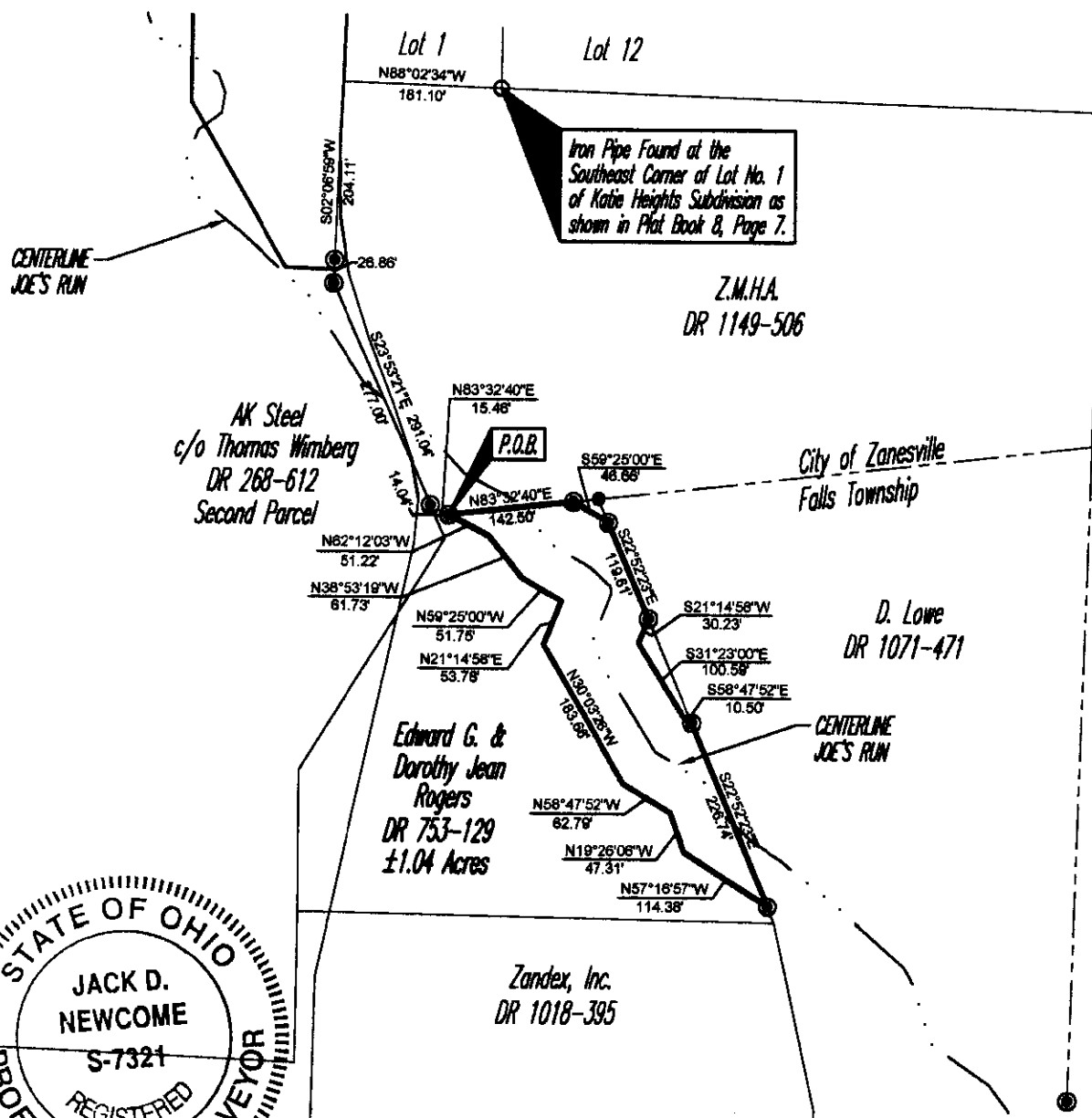


SITUATED IN

The State of Ohio, County of Muskingum
Township of Falls and being a part of
Quarter Township Four, T1, R8, U.S.M.L.

LEGEND

- Iron Pin to be set after construction.
- Iron Pin Found
- Pipe Found



BASIS OF BEARING

Bearings are based on NAD 83, South Zone,
Ohio State Plane Coordinate System, as per GPS
Observations of Muskingum County GPS Monuments.

REFERENCES

DR 1149-506
DR 753-129
DR 1071-471
DR 268-612
DR 1018-395

PARCEL NO.

Part of: 18-17-76-01-03-000(±1.04 ac.)
17

GRAPHIC SCALE



(IN FEET)
1 inch = 200 ft.

Project No.: MVPD-368

PLAT 5



Linn Engineering, Inc. 740-468-7494
Civil Engineering Consultants
P.O. Box 2086 Zanesville, Ohio 43702-2086

OFFICE COPY
NOT RECORDABLE
Date 9-25-03
Reg. Surveyor No. 7321