



## Linn Engineering, Inc.

*Civil Engineering Consultants*

740-452-7434 • 1-800-991-7434 • FAX 740-452-5198

534 Market Street • P.O. Box 2086 • Zanesville, Ohio 43702-2086

### Rizzi - Plat 17

Situated in the State of Ohio, County of Muskingum, Township of Falls and bounded and described as follows:

Being a part of lands now owned by A. Rizzi (DR 1129-470) and being more particularly bounded and described as follows:

Beginning for reference at an axle found on the northeast corner of Lot 1 of Edmund Brush Subdivision as designated and delineated on Muskingum County Plat Book 1, Page 208; thence along the north line of lands now owned by Zanesville Board of Education (DR 876-193) the following two courses:

- 1) North 87 degrees 19 minutes 23 seconds West for a distance of 297.98 feet to an axle found;
- 2) South 62 degrees 19 minutes 22 seconds West for a distance of 143.65 feet to a point on said Zanesville Board of Education's northwest corner and the principal place of beginning, passing an iron pin to be set after construction at 84.38 feet and an iron pin found at 120.03 feet;

thence along said Board of Education's west line South 13 degrees 16 minutes 35 seconds East for a distance of 112.88 feet to the northeast corner of lands now owned by W. Barker, Trustee (OR 1654-320);

thence along said Barker's north line South 60 degrees 43 minutes 12 seconds West for a distance of 40.51 feet to an iron pin to be set after construction;

thence through lands now owned by A. Rizzi (DR 1129-470) the following two courses:

- 1) North 29 degrees 42 minutes 34 seconds West for a distance of 87.51 feet to a point;
- 2) North 03 degrees 59 minutes 20 seconds East for a distance of 25.02 feet to an iron pin to be set after construction on the south line of lands now owned by Eden Group, Ltd. (DR 1088-156);

thence along said Eden Group's south line North 60 degrees 38 minutes 27 seconds East for a distance of 58.56 feet to the principal place of beginning, passing an iron pin found at 15.27 feet; containing 0.14 acres, more or less, subject to all legal road right of ways and applicable easements, written or implied.

Bearings are based on NAD 83, South Zone, Ohio State Plane Coordinate System, as per GPS Observations of Muskingum County GPS Monuments.

**OFFICE COPY  
NOT RECORDABLE**

Iron pins set are 5/8 inch diameter by 30 inch long rebar with plastic identification caps.

This description is written from a survey completed on May 8, 2003 by Jack D. Newcome, Reg. No. 7321.

**OFFICE COPY  
NOT RECORDABLE**

Jack D. Newcome 9-25-03  
Jack D. Newcome Date  
Reg. No. 7321

**Parcel No.**

Part of: 17-17-79-01-02-003 (0.14 ac.)



DESCRIPTION APPROVED  
FOR RECORDED  
BY [Signature]

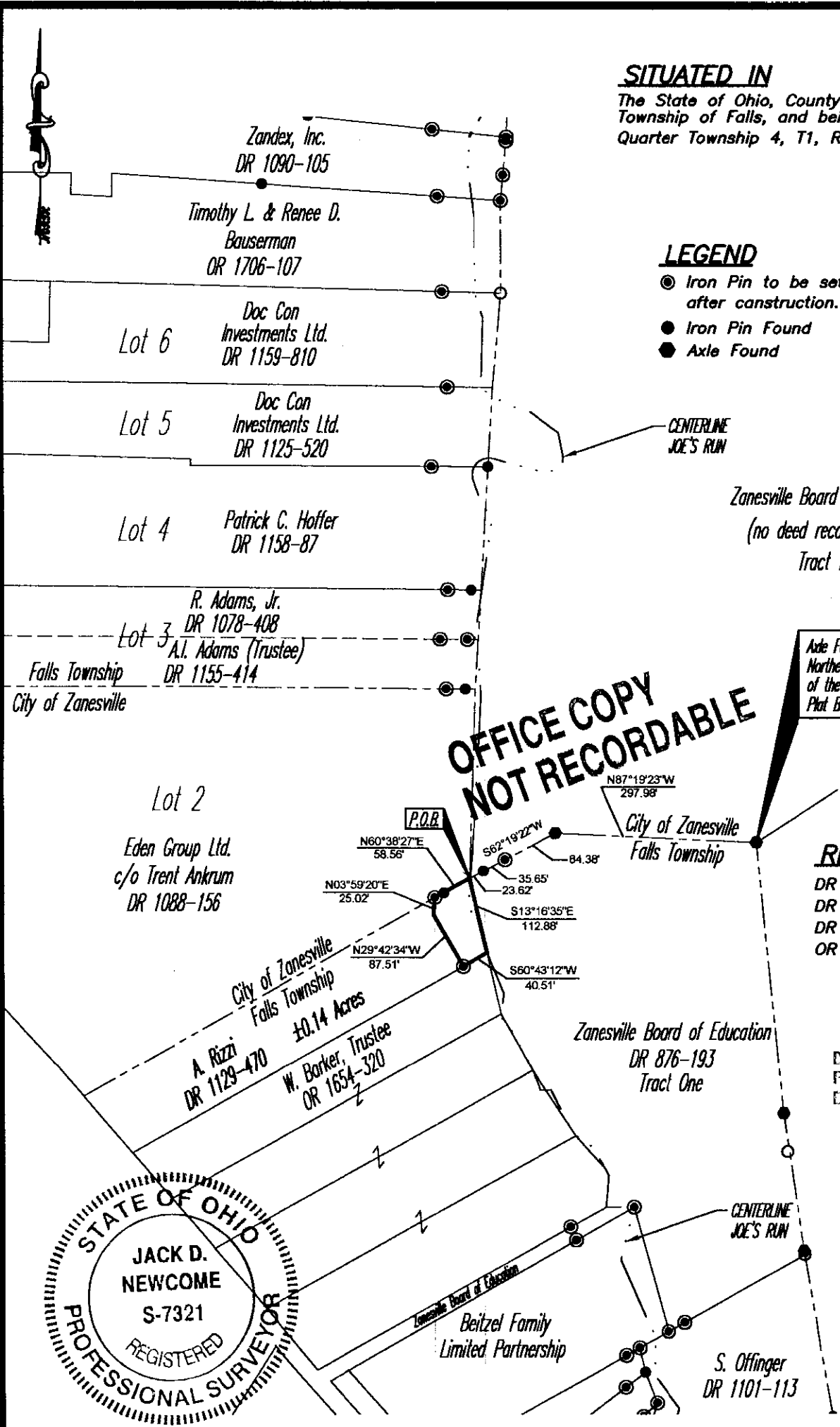
9-25-2003

ADDRESS N/A  
SNR

**SITUATED IN**  
The State of Ohio, County of Muskingum  
Township of Falls, and being a part of  
Quarter Township 4, T1, R8, U.S.M.L.

**LEGEND**

- Iron Pin to be set after construction.
- Iron Pin Found
- Axle Found

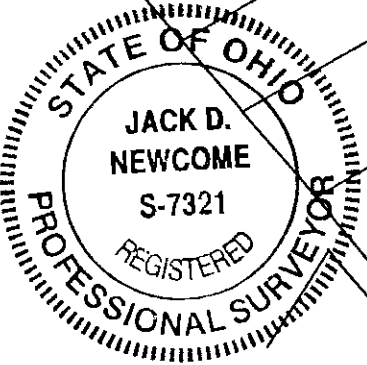


**OFFICE COPY  
NOT RECORDABLE**

**REFERENCES**

- DR 1129-470
- DR 1088-156
- DR 876-193
- OR 1654-320

DESCRIPTION APPROVED  
FOR RECORDING  
BY *[Signature]*  
9-25-2003



**BASIS OF BEARING**  
Bearings are based on NAD 83, South Zane,  
Ohio State Plane Coordinate System, as per GPS  
Observations of Muskingum County GPS Monuments.

**PARCEL NO.**  
Part of: 17-17-70-11-02-003 (±0.14 ac.)

**OFFICE COPY  
NOT RECORDABLE**

Jack D. Newcome  
Registered Surveyor No. 7321

9-25-03  
Date

**GRAPHIC SCALE**



( IN FEET )  
1 inch = 200 ft.

Project No.: MVPD-368

PLAT 17



Linn Engineering, Inc. 740-452-7434  
Civil Engineering Consultants  
P.O. Box 2086 Zanesville, Ohio 43702-2086