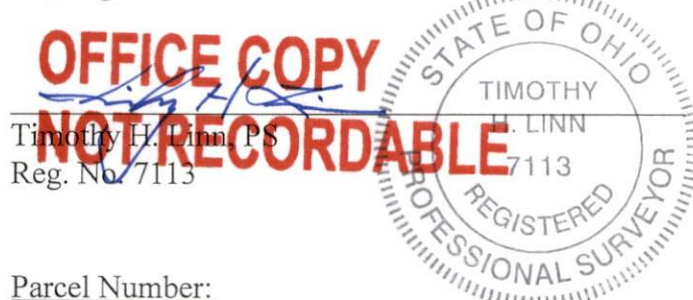


Iron pins set are 5/8 inch rebar, 30 inches long, with plastic identification caps, stamped LINN #7113.

Bearings are based on the Ohio State Plane Coordinate System, NAD 83, South Zone, as per GPS observations made on June 25, 2021.

This description is written based on a field survey completed June 25, 2021 by Timothy H. Linn, PS, Reg. No. 7113.



Timothy H. Linn, PS  
Reg. No. 7113

7/14/22  
Date

Parcel Number:

Part of: 17-34-02-29-000       $\pm 0.015$  acres

Part of: 17-34-02-30-000       $\pm 7.765$  acres

Total:       $\pm 7.780$  acres

**DESCRIPTION  
APPROVED**

By: DWB 7-15-2022

APPROVED BY CITY PLANNING COMMISSION,  
ZANESVILLE, OHIO:  
NO PLAT REQUIRED

[Signature] 7-14-2022