



Linn Engineering, Inc.

Civil Engineering Consultants

740-452-7434 • 1-800-991-7434 • FAX 740-452-5198

534 Market Street • P.O. Box 2086 • Zanesville, Ohio 43702-2086

KEARNS DEVELOPMENT COMPANY, LTD.

PARCEL 5

Situated in the State of Ohio, County of Muskingum, City of Zanesville, bounded and described as follows:

Being a part of the Southwest Quarter of Quarter Township 1 and a part of Bank Lot 10 as the same is designated and delineated on Muskingum County Deed Book K, Page 644 Township 1 North, Range 8 West, United States Military Lands, and also being a part of lands now owned by Kearns Development Company, Ltd. as the same is recorded in Muskingum County Deed Record 1145, Page 983 and being more particularly described as follows:

BEGINNING for reference at an axle found at the northeast corner of Lot 33 of Westgate No. 2 Subdivision as designated and delineated on Muskingum County Plat Book 8, Page 30 and the west line of lands now owned by Zanesville County Club (DR 327-627);

THENCE along said Zanesville County Club's west line North 02 degrees 07 minutes 13 seconds East 1096.63 feet to a point on the former centerline of Military Road (CR 146), passing an iron pin found at 1071.63 feet;

THENCE along said former centerline of Military Road, North 88 degrees 53 minutes 27 seconds West 644.98 feet to the principal place of beginning, said point being on the west line of lands now owned by City of Zanesville (OR 1992-144);

THENCE continuing along said former centerline of Military Road, North 88 degrees 53 minutes 27 seconds West 56.11 feet to a point on the proposed cul-de-sac of Military Road (60' Radius);

THENCE along the north line of the proposed Military Road cul-de-sac the following two courses:

- 1) a curve to the left having a radius of 60.00 feet, a central angle of 156 degrees 37 minutes 00 seconds and a chord bearing North 76 degrees 44 minutes 33 seconds West 117.51 feet to a point;
- 2) North 88 degrees 53 minutes 27 seconds West 15.77 feet to an axle found on the southeast corner of Military Gardens Subdivision as the same is designated and delineated on Muskingum County Plat Book 7, Page 49, said axle also being the northwest corner of lands now owned by City of Zanesville (OR 1992-109);

THENCE along the east line of said subdivision North 01 degrees 27 minutes 52 seconds East 2440.67 feet to an iron pin found on the south line of lands now owned by Harry and Jane Kearns (DR 1128-719), passing an iron pipe found at 349.78 feet;

THENCE along said Kearns' south line South 87 degrees 40 minutes 19 seconds East 1835.70 feet to a point on said west line of City of Zanesville's lands, passing an iron pin found at 700.86 feet;

THENCE along the said west line of City of Zanesville's lands the following twelve courses:

- 1) South 46 degrees 13 minutes 39 seconds West 178.98 feet to a point;
- 2) North 43 degrees 46 minutes 21 seconds West 29.65 feet to a point;

- 3) South 46 degrees 13 minutes 40 seconds West 30.00 feet to a point;
 - 4) South 43 degrees 46 minutes 21 seconds East 29.65 feet to a point;
 - 5) South 46 degrees 13 minutes 39 seconds West 750.86 feet to a point;
 - 6) a curve to the left having a radius of 2914.79 feet, a central angle of 15 degrees 55 minutes 28 seconds and a chord bearing South 38 degrees 15 minutes 56 seconds West 807.51 feet to a point;
 - 7) South 88 degrees 00 minutes 09 seconds West 63.83 feet to a point;
 - 8) South 01 degrees 59 minutes 48 seconds East 30.00 feet to a point;
 - 9) North 88 degrees 00 minutes 09 seconds East 45.12 feet to a point;
 - 10) a curve to the left having a radius of 2914.79 feet, a central angle of 05 degrees 01 minutes 44 seconds and a chord bearing South 27 degrees 05 minutes 38 seconds West 255.75 feet to a point;
 - 11) South 24 degrees 34 minutes 46 seconds West 914.78 feet to a point;
 - 12) a curve to the right having a radius of 1382.39 feet, a central angle of 00 degrees 14 minutes 48 seconds and a chord bearing South 24 degrees 42 minutes 10 seconds West 5.95 feet the principal place of beginning,
- containing 47.90 acres, more or less, subject to all legal road right of ways and applicable easements, written or implied.

Bearings are based on Grid North - Ohio South Zone Lambert Projection, derived from GPS Observations of the subject property.

This description is written from record documents and an actual field survey completed June 19, 1998 by Linn Engineering, Inc.

Timothy H. Linn, Reg. No. 7113

Date

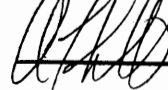
Parcel No.

Part of: 19-17-34-02-29-000 (+/- 6.09 ac.)

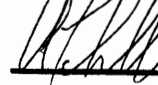
Part of: 19-17-34-02-30-000 (+/- 41.81 ac.)

Total (+/- 47.90 ac.)

APPROVED FOR CLOSURE

 2/26/2007

EXEMPT FROM
PLANNING COMMISSION

 2/26/2007

LEGEND

- Iron Pin Set, 5/8" rebar
- Iron Pin Found
- Pipe Found
- Right-of-Way Monument
- Axle Found
- R/W — Right of Way
- Corporation Line

BASIS OF BEARING

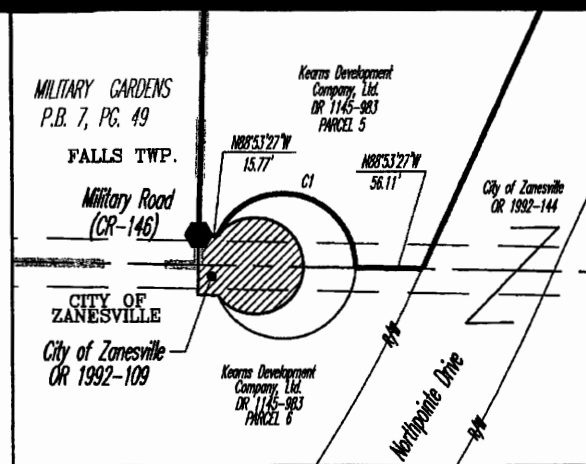
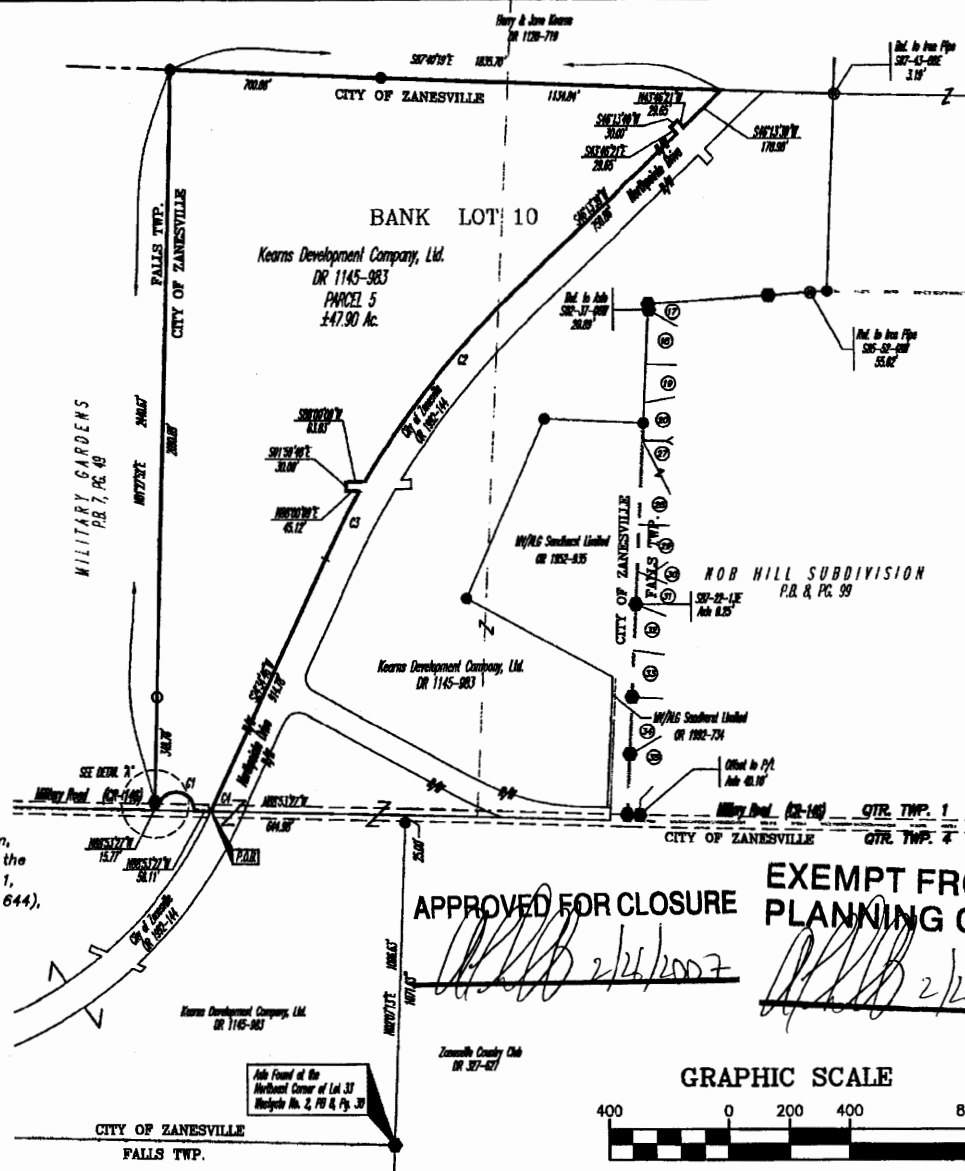
Bearings are based on Grid North - Ohio South Zone Lambert Projection, derived from GPS Observations of the property.

SITUATED IN

The State of Ohio, County of Muskingum, City of Zanesville, and being a part of the Southwest Quarter of Quarter Township 1, and part of Bank Lot 10 (DB "K", Pg. 644), T1, R8, United States Military Lands.

REFERENCES

DR 1145-983
 OR 1992-144
 DR 327-627
 DR 1128-719
 P.B. 8, PG. 16 (WESTGATE NO. 1)
 P.B. 8, PG. 30 (WESTGATE NO. 2)
 P.B. 17, PG. 97 (ANNEXATION)

**DETAIL "A"****CURVE TABLE**

NO.	DELTA	RADIUS	ARC	CHORD	BEARING
C1	156°37'00"	60.00'	164.01'	117.51'	N76°44'33"W
C2	15°55'28"	2914.79'	810.12'	807.51'	S38°15'56"W
C3	5°01'44"	2914.79'	255.83'	255.75'	S27°05'38"W
C4	0°14'48"	1382.39'	5.95'	5.95'	S24°42'10"W

PARCEL NO.

Part of: 19-17-34-02-30-000(±41.81 ac.)
 19-17-34-02-29-000(±6.09 ac.)
 Total (±47.90ac.)

APPROVED FOR CLOSURE

EXEMPT FROM PLANNING COMMISSION

GRAPHIC SCALE

(IN FEET)
 1 inch = 400 ft.

Timothy H. Linn
 Reg. Surveyor No. 7113

Date

Project No.: 800-102



Linn Engineering, Inc.
 Civil Engineering Consultants
 P.O. Box 2088 Zanesville, Ohio 43702-2088

740-458-7434