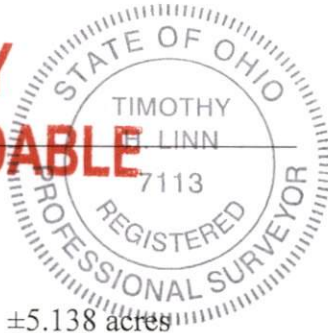


This description is written based on a field survey completed June 25, 2021 by Timothy H. Linn, PS, Reg. No. 7113.

OFFICE COPY

NOT RECORDABLE

Timothy H. Linn, PS
Reg. No. 7113



7/14/22
Date

Parcel Numbers:

Part of: 17-34-02-29-000 ±5.138 acres
Part of: 17-34-02-30-000 ±0.862 acres
Total: ±6.000 acres

DESCRIPTION

APPROVED

By: DLB 7-15-2022

APPROVED BY CITY PLANNING COMMISSION
ZANESVILLE, OHIO;
NO PLAT REQUIRED

[Signature] 7-14-2022