

**SITUATED IN**

The State of Ohio, County of Muskingum, Township of Falls,  
Second Quarter Township, T1, R7, U.S. Military Lands.

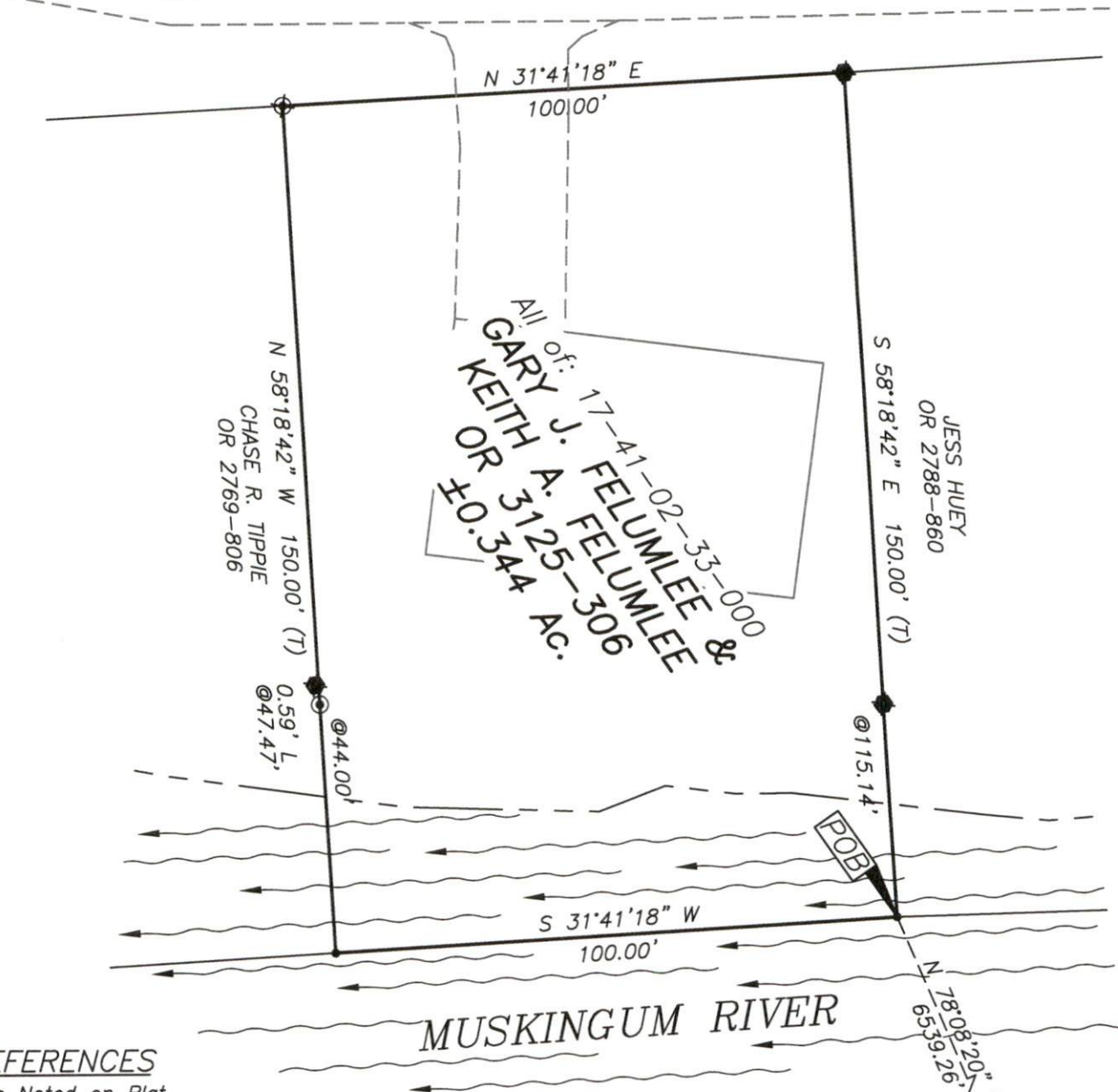
**BASIS OF BEARING**

Bearings are based on State Plane  
Grid Coordinates, NAD83, Ohio South,  
per GPS Observation.

Re-Survey



RIVERSIDE AIRPORT DRIVE (T-659)



**REFERENCES**

\* As Noted on Plat  
[www.muskingumcountyauditor.org](http://www.muskingumcountyauditor.org)  
[www.mceo.org](http://www.mceo.org)  
<http://recorder.muskingumcounty.org>

**LEGEND**

- Unmarked Point
- Axle Found
- ⊙ Iron Pin Set (5/8" MCPEEK PS 8517)
- Z- Property Hook
- Iron Pin Found

**DESCRIPTION**

APPROVED

By: A.L. Linehart

7-19-2023 MB

Graphic Scale



( IN FEET )  
1 inch = 30 ft.



**OFFICE COPY  
NOT RECORDABLE**

Brian Kelly McPeek  
Reg. Surveyor No. 8517

This plat was prepared by McPeek Land Surveying, LLC  
in accordance with Chapter 4733-37 of the Administrative Code,  
and is intended to be used for the legal transfer of the property  
described and does not intend to describe all or any easements of  
record, nor encroachments unless otherwise intended.



[www.mcpeeklandsurveying.com](http://www.mcpeeklandsurveying.com)  
email: [brian@mcpeeklandsurveying.com](mailto:brian@mcpeeklandsurveying.com)  
1705 East Pike, \* Zanesville, Oh 43701 \* 740.704.6073