

20-30 - 20-09-000



**Village of Philo  
DR 538-726  
Parcel Two  
+/- 39.519 Ac.**

Being a part of the Northeast Quarter of Sec. 20, Township 11, Range 13, Harrison Township, Muskingum County, also being all of the lands now owned by the Village of Philo as recorded in DR 538-726, Parcel Two of the Muskingum County Recorder more fully described as follows.

Beginning at stone found at the Northwest Corner of the Northeast Quarter of Sec. 20, T11, R13, Harrison Township;

thence along the north line of Section 20, South 87 degrees 16 minutes 00 seconds East, 770.69 feet to a stone found at the northwest corner of the lands now owned by the Village of Philo (DR 538-726, Parcel One);

thence with the common line of said Parcel One and Parcel Two, South 18 degrees 13 minutes 25 seconds East, 1357.84 feet to a point in the center line of Irish Ridge Road (CR-32), passing an iron pin set at 1335.14 feet;

thence with the center line of said Irish Ridge Road the following eleven (11) courses:

1. South 73 degrees 20 minutes 49 seconds West, 53.29 feet to a point;
2. South 63 degrees 53 minutes 55 seconds West, 148.72 feet to a point;
3. South 56 degrees 26 minutes 23 seconds West, 170.53 feet to a point;
4. South 51 degrees 02 minutes 17 seconds West, 362.68 feet to a point;
5. South 62 degrees 40 minutes 36 seconds West, 92.50 feet to a point;
6. South 77 degrees 31 minutes 46 seconds West, 104.83 feet to a point;
7. South 81 degrees 52 minutes 12 seconds West, 125.26 feet to a point;
8. South 65 degrees 34 minutes 29 seconds West, 91.73 feet to a point;
9. South 49 degrees 22 minutes 01 seconds West, 119.96 feet to a point;
10. South 31 degrees 37 minutes 55 seconds West, 107.78 feet to a point;
11. South 13 degrees 52 minutes 32 seconds West, 181.23 feet to a point;

thence leaving said center line and going with common line of Stephen P. & Elizabeth S. Roberts and the Village of Philo's lands (DR 923-129) the following three (3) courses:

1. North 02 degrees 42 minutes 44 seconds East, 802.76 feet to a stone, passing an iron pin set at 85.00 feet and a stone at 391.19 feet;
2. North 86 degrees 39 minutes 45 seconds West, 94.58 feet to a stone found on the half-section line;

20-30-20-09-000 A

3. North 01 degrees 05 minutes 46 seconds East, 518.59 feet along said half-section line to a stone at the common corner of said Roberts lands and the lands now owned by Deloris J. Mahon (DR 510-514);  
thence continuing with said half-section line and with the east line of said Mahon's lands, North 02 degrees 53 minutes 08 seconds East, 871.33 feet to the point of beginning, containing 39.519 acres more or less, subject to all legal highways and easements of record.

All bearings described herein are based on the Ohio State Plane Grid Coordinates, NAD83, Ohio South per GPS Observation.

All iron pins set are 5/8 inch by 30 inch steel rebar with plastic identification caps marked MCPEEK PS8517.

The above described 39.519 acre parcel is based on a field survey made by McPeek Land Surveying on February 14<sup>th</sup>, 2013.

**OFFICE COPY**  
**NOT RECORDABLE**



3/1/13  
Date

All of: 20-30-20-09-000 (+/- 39.519 Ac.)

DESCRIPTION  
APPROVED

By: [Signature] 3/1/2013

SITUATED IN

The State of Ohio, County of Muskingum  
Township of Harrison, and being a part  
of the NE Qtr. of Sec. 20, T11, R13.

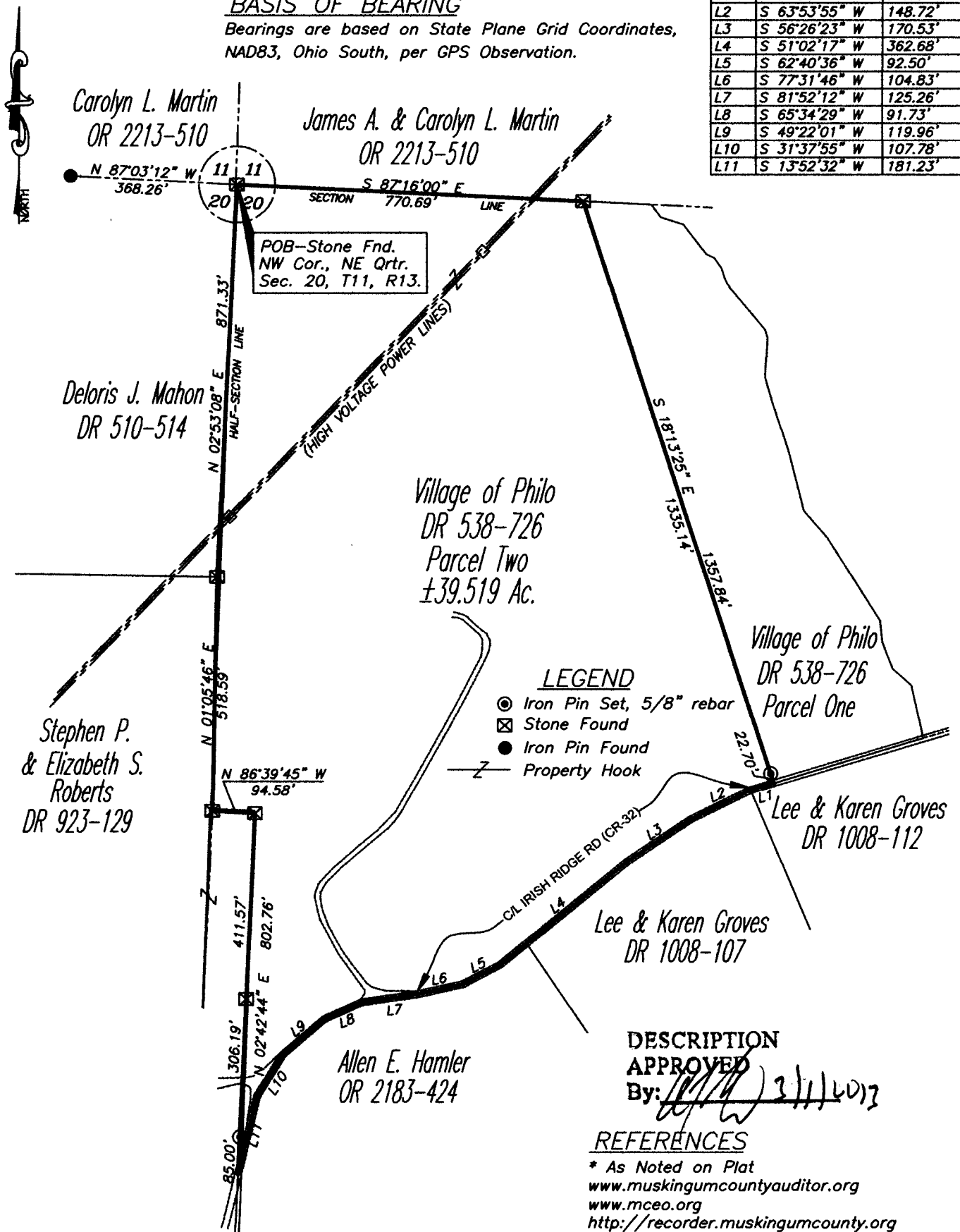
RE-SURVEY

LINE TABLE

LINE	BEARING	DISTANCE
L1	S 73°20'49" W	53.29'
L2	S 63°53'55" W	148.72'
L3	S 56°26'23" W	170.53'
L4	S 51°02'17" W	362.68'
L5	S 62°40'36" W	92.50'
L6	S 77°31'46" W	104.83'
L7	S 81°52'12" W	125.26'
L8	S 65°34'29" W	91.73'
L9	S 49°22'01" W	119.96'
L10	S 31°37'55" W	107.78'
L11	S 13°52'32" W	181.23'

BASIS OF BEARING

Bearings are based on State Plane Grid Coordinates,  
NAD83, Ohio South, per GPS Observation.



LEGEND

- ⊙ Iron Pin Set, 5/8" rebar
- ⊠ Stone Found
- Iron Pin Found
- Z- Property Hook

DESCRIPTION APPROVED

By: *[Signature]* 3/1/2013

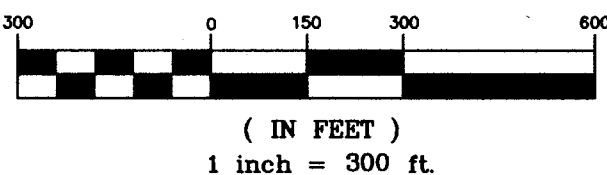
REFERENCES

- \* As Noted on Plat
- [www.muskingumcountyauditor.org](http://www.muskingumcountyauditor.org)
- [www.mceo.org](http://www.mceo.org)
- <http://recorder.muskingumcounty.org>

PARCEL NO.

All of: 20-30-20-09-000 (39.519 Ac.)

STATE OF OHIO  
Brian Kelly McPeck  
8517  
113  
**OFFICE COPY**  
**NOT RECORDABLE**  
GRAPHIC SCALE



**MCPEEK**  
**LAND**  
**SURVEYING**  
[mcpeeklandsurveying.com](http://mcpeeklandsurveying.com)  
423 Smithfield Ave., Zanesville, Ohio 43701  
**740.704.6073**