

W. J. BIEDENBACH & ASSOC.
3120 LISA LANE
ZANESVILLE, OHIO 43701

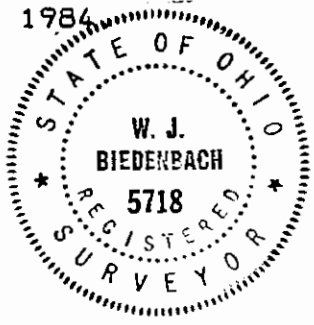
BEING A PART OF LOT 5 OF FRACTIONAL SECTION 30, IN TOWNSHIP 12, RANGE 12, ACCORDING TO A PLAT OF SAID SUBDIVISION MADE BY CHARLES ROBERTS AND RECORDED IN DEED BOOK "S" PAGE 474 OF THE MUSKINGUM COUNTY DEED RECORDS IN HARRISON TOWNSHIP, MUSKINGUM COUNTY, OHIO AND BEING FURTHER DESCRIBED AS FOLLOWS:

COMMENCING AT A CORNER STONE AT THE SOUTHWEST CORNER OF LOT 4 OF THE ABOVE MENTIONED SUBDIVISION, ON THE SOUTH LINE OF FRACTIONAL SECTION 30, SAID STONE BEARS NORTH 88 DEGREES 27 MINUTES 07 SECONDS EAST ALONG THE SOUTH LINE OF SAID SECTION 30 A DISTANCE OF 2353.56 FEET FROM THE SOUTHWEST CORNER THEREOF; THENCE NORTH 88 DEGREES 27 MINUTES 07 SECONDS EAST 1750.86 FEET TO A POINT; THENCE NORTH 01 DEGREES 50 MINUTES 35 SECONDS EAST 779.01 FEET TO A POINT IN CROW RUN; THENCE NORTH 51 DEGREES 17 MINUTES 54 SECONDS EAST 151.30 FEET TO A POINT IN CROW RUN; THENCE SOUTH 86 DEGREES 15 MINUTES 17 SECONDS EAST 236.06 FEET TO A POINT IN CROW RUN; THENCE SOUTH 79 DEGREES 11 MINUTES 50 SECONDS EAST 408.76 FEET TO A POINT IN CROW RUN; THENCE SOUTH 42 DEGREES 13 MINUTES 25 SECONDS EAST 220.18 FEET TO A POINT IN CROW RUN; THENCE SOUTH 59 DEGREES 10 MINUTES 27 SECONDS EAST 106.13 FEET TO A POINT IN CROW RUN; THENCE SOUTH 65 DEGREES 19 MINUTES 16 SECONDS EAST 66.75 FEET TO A POINT IN THE CENTER OF COUNTY RD NO. 6; THENCE SOUTH 71 DEGREES 59 MINUTES 16 SECONDS EAST 185.37 FEET TO A POINT ON THE LOW WATER MARK OF THE MUSKINGUM RIVER; THENCE NORTH 12 DEGREES 27 MINUTES 00 SECONDS WEST 332.36 FEET TO A POINT, SAID POINT BEING THE PLACE OF BEGINNING OF THIS TRACT; THENCE SOUTH 75 DEGREES 28 MINUTES 13 SECONDS WEST 174.71 FEET TO A POINT IN THE CENTER OF COUNTY ROAD NO. 6, PASSING POINTS MARKED BY IRON PINS SET (5/8" REBAR) AT 34.07 FEET AND 156.36 FEET; THENCE NORTH 13 DEGREES 09 MINUTES 40 SECONDS WEST 18.73 FEET TO A POINT IN THE CENTER OF COUNTY ROAD NO. 6; THENCE NORTH 08 DEGREES 59 MINUTES 48 SECONDS WEST 116.13 FEET TO A POINT IN THE CENTER OF COUNTY ROAD NO. 6; THENCE NORTH 81 DEGREES 44 MINUTES 40 SECONDS EAST 168.28 FEET TO A POINT ON THE LOW WATER MARK ON THE MUSKINGUM RIVER, PASSING POINTS MARKED BY IRON PINS SET (5/8" REBAR) AT 13.70 FEET AND 131.78 FEET; THENCE SOUTH 12 DEGREES 27 MINUTES 00 SECONDS EAST 116.00 FEET TO THE PLACE OF BEGINNING.

CONTAINING 0.493 ACRES MORE OR LESS, SUBJECT TO ALL LEGAL ROAD RIGHT-OF-WAY.

I HEREBY CERTIFY THE ABOVE SURVEY TO BE CORRECT AS PREPARED BY ME, THIS 14TH DAY OF DECEMBER 1984

W.J. Biederbach
OFFICE COPY NOT RECORDABLE
W. J. BIEDENBACH
REG. SURVEYOR #5718



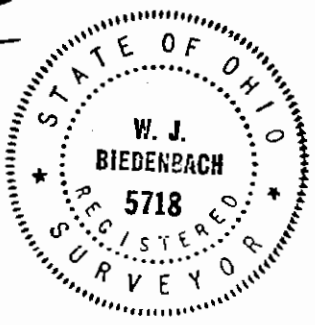
D62052

AB

SW CORNER OF LOT 4 OF FRACTIONAL SECTION 30 (D.B. "S" PG. 474) CORNER STONE F'D

I HEREBY CERTIFY THE ABOVE PLAT AND SURVEY TO BE CORRECT AS SURVEYED BY ME THIS 15TH DAY OF DECEMBER 1984

W.J. Biederbach
OFFICE COPY NOT RECORDABLE
W. J. BIEDENBACH
REG. SURVEYOR #5718



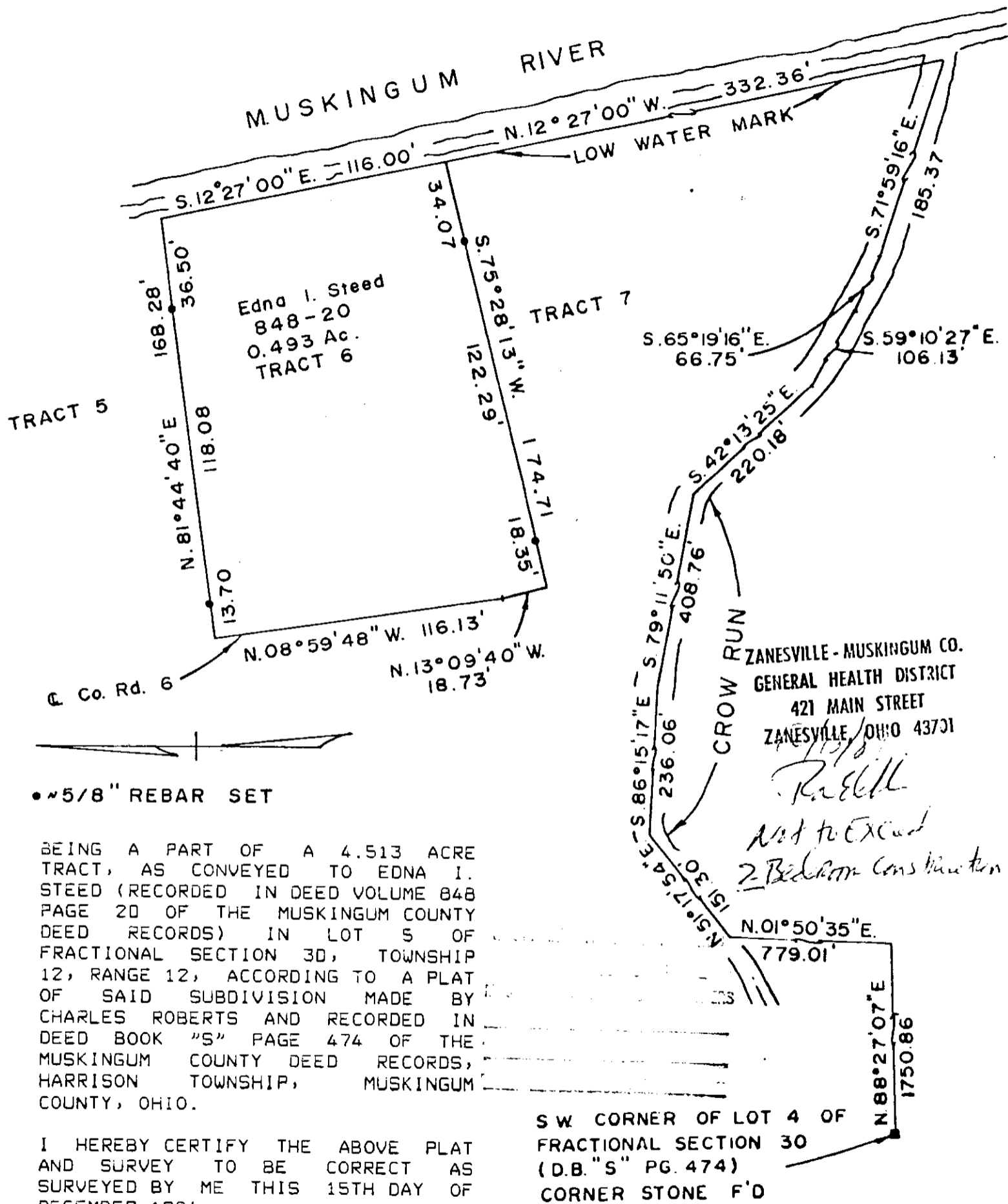
W. J. BIEDENBACH & ASSOC.
Surveying & Mapping
3120 Lisa Ln. Zanesville, Ohio 43701
(614) 453-4850

Drawn by <i>AB</i>	Date 12-12-84
Scale 1" = 50'	Checked by <i>AS</i>

CITATION OF PERTINENT DOCUMENTS
 DEED VOLUME 848 PG. 20
 DEED VOLUME 526 PG. 939
 DEED VOLUME 564 PG. 235
 J.L. GAMBLE SURVEY OF 4.513 AC

20-80-30-47-005
 9890 OLD RIVER RD

BEARINGS ARE BASED ON GAMBLE SURVEY
 OF 4.513 ACRES (848 PG. 20)



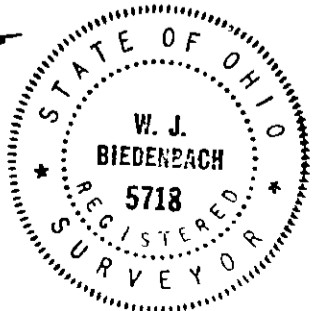
• 5/8" REBAR SET

BEING A PART OF A 4.513 ACRE TRACT, AS CONVEYED TO EDNA I. STEED (RECORDED IN DEED VOLUME 848 PAGE 20 OF THE MUSKINGUM COUNTY DEED RECORDS) IN LOT 5 OF FRACTIONAL SECTION 30, TOWNSHIP 12, RANGE 12, ACCORDING TO A PLAT OF SAID SUBDIVISION MADE BY CHARLES ROBERTS AND RECORDED IN DEED BOOK "S" PAGE 474 OF THE MUSKINGUM COUNTY DEED RECORDS, HARRISON TOWNSHIP, MUSKINGUM COUNTY, OHIO.

I HEREBY CERTIFY THE ABOVE PLAT AND SURVEY TO BE CORRECT AS SURVEYED BY ME THIS 15TH DAY OF DECEMBER 1984.

SW CORNER OF LOT 4 OF FRACTIONAL SECTION 30 (D.B. "S" PG. 474) CORNER STONE F'D

W. J. BIEDENBACH & ASSOC.
 OFFICE COPY
 NOT RECORDED



W. J. BIEDENBACH & ASSOC.
 Surveying & Mapping
 3120 Lisa Ln. Zanesville, Ohio 43701
 (614) 453-4850

Drawn by <i>AB</i>	Date 12-12-84
Scale 1" = 50'	Checked by <i>AS</i>
Job No. 2052	CENTURY 21