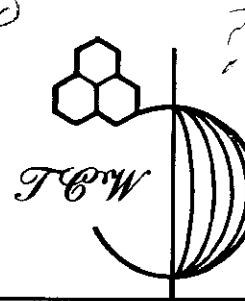


20-80-32 00

# The T&W Company



Engineering • Surveying  
Resource Development

So. Main St. • P.O. Box 648 • New Lexington, Ohio 43764 • 614-342-5131

## Deed Description

Being a part of the West half of Section 32, Township 12, Range 12, Harrison Township, Muskingum County, Ohio and being more particularly described as follows:

Beginning for reference at the Southwest corner of Section 32; thence North 00 degrees 00 minutes 00 seconds East, 2682.00 feet with the line between Sections 31 and 32 to an iron pin set and the principal place of beginning; thence continuing North 0 degrees 0 minutes 0 seconds East, 369.00 feet to a point in the center line of Cedar Run Creek, passing an iron pin at 359.00 feet said point being 6.21 feet south of a large boulder; thence along the meandering of Cedar Run Creek the following 23 courses: North 83 degrees 49 minutes 57 seconds East, 17.58 feet; South 84 degrees 54 minutes 51 seconds East, 136.96 feet; North 13 degrees 54 minutes 35 seconds West, 53.90 feet; North 39 degrees 50 minutes 41 seconds East, 22.74 feet; South 69 degrees 45 minutes 00 seconds East, 168.78 feet; North 21 degrees 04 minutes 50 seconds East, 58.49 feet; North 52 degrees 39 minutes 24 seconds East, 53.63 feet; South 66 degrees 50 minutes 04 seconds East, 60.93 feet; North 37 degrees 05 minutes 23 seconds East, 58.49 feet; South 66 degrees 02 minutes 02 seconds East, 69.10 feet; North 14 degrees 12 minutes 31 seconds East, 69.50 feet; North 82 degrees 55 minutes 54 seconds East, 100.91 feet; North 22 degrees 02 minutes 13 seconds East, 84.26 feet; South 86 degrees 18 minutes 39 seconds East, 50.62 feet; North 61 degrees 03 minutes 32 seconds East, 32.60 feet; South 66 degrees 20 minutes 55 seconds East 131.41 feet; North 17 degrees 41 minutes 40 seconds East 37.60 feet; North 87 degrees 07 minutes 35 seconds East, 34.56 feet; North 84 degrees 57 minutes 19 seconds East, 75.75 feet; South 84 degrees 16 minutes 47 seconds East, 34.44 feet; North 76 degrees 19 minutes 16 seconds East, 101.29 feet; North 66 degrees 08 minutes 13 seconds East, 57.54 feet; North 82 degrees 53 minutes 47 seconds East 36.14 feet; thence leaving Cedar Run Creek North 54 degrees 02 minutes 16 seconds East 94.71 feet to an iron pin in the center line of Cedar Run Road, passing an iron pin at 15.00 feet; thence South 33 degrees 43 minutes 23 seconds East 50.03 feet to an iron pin; thence South 76 degrees 58 minutes 26 seconds East 348.82 feet to an iron pin; thence North 84 degrees 32 minutes 04 seconds East 40.56 feet to an iron pin; thence North 55 degrees 56 minutes 53 seconds East 45.58 feet to the bank of the Muskingum River passing an iron pin at 23.06 feet; thence South 40 degrees 30 minutes 55 seconds East 108.04 feet to a point along the river bank; thence South 42 degrees 50 minutes 10 seconds East 376.03 feet along the river bank; thence South 47 degrees 13 minutes 44 seconds East 480.30 feet to a point along the river bank; thence South 47 degrees 22 minutes 59 seconds East 100.17 feet to a point along the river bank; thence South 45 degrees 22 minutes 13 seconds East 131.56 feet to a point along the river bank; thence leaving the river bank South 67 degrees 58 minutes 16 seconds West 379.88 feet to an iron pin passing a railroad spike set in the centerline of Old River Road at 14.93 feet; thence South 87 degrees 59 minutes 28 seconds West 985.90 feet to an iron pin found; thence North 12 degrees 34 minutes 52 seconds West 483.89 feet to

an "X" in a rock ledge; thence Sough 86 degrees 07 minutes 18 seconds West 1150.62 feet to the place of beginning. The tract as surveyed contains 36.08 acres (this includes the 2.68 acres taken up by the Railroad right-of-way through the tract), more or less, subject to all legal highways and easements of record.

The bearings noted in the above description are based on the line between Sections 31 and 32 bearings North 0 degrees 0 minutes 0 seconds East.

Iron pins set are 5/8 inch rebar 30 inches long, set flush with the ground, with plastic identification caps.

*T. Chris Wilson*

T. Chris Wilson  
Ohio Reg. Surveyor No. 6465

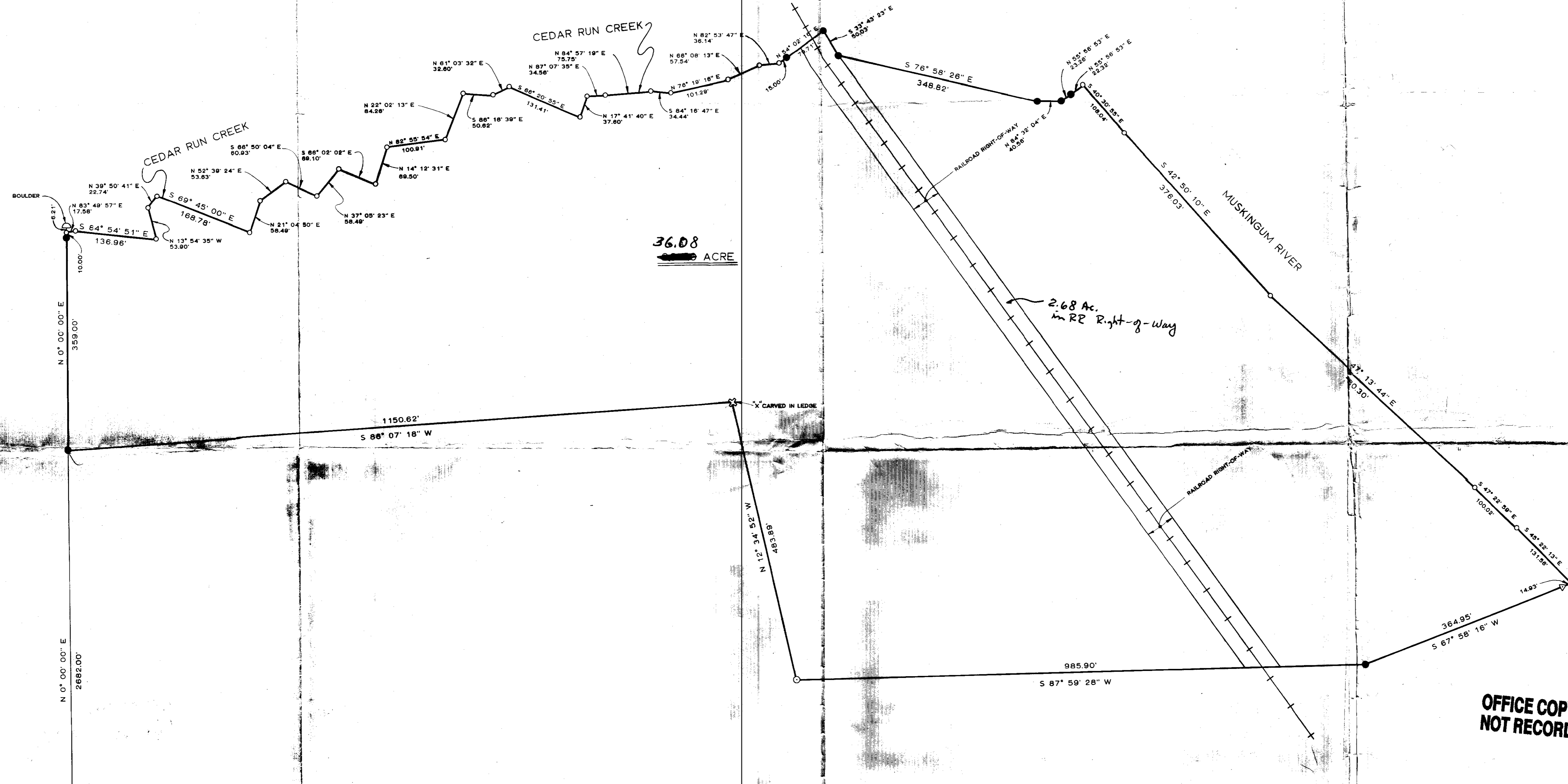
Date: November 15, 1983

DESCRIPTION APPROVED  
for Auditor's transfer

By *H. H. L. L. L.*  
11-23-83

OFFICE OF THE  
NOTARY PUBLIC

20-80-32-12  
ADDRESS N/A



36.08  
ACRE

2.68 Ac.  
in RR Right-of-Way

OFFICE COPY  
NOT RECORDABLE

DESCRIPTION APPROVED  
for Auditor's transfer  
By *W. H. D...*  
11-23-83

**The T&W Company** ENGINEERING SURVEYING RESOURCE DEVELOPMENT  
BOX 648 • NEW LEXINGTON, OHIO 42764 • 614-848-5131

SURVEY FOR: HANKISON DATE: 11/2/83  
DRAWN: S. GEORGE

● IRON PIN SET RANGE: 12  
○ IRON PIN FOUND TOWNSHIP: 12  
⊕ POST SECTION: 32  
▲ RAILROAD SPIKE SET ● MONUMENT SET POL TOWNSHIP: HARRISON  
△ RAILROAD SPIKE FOUND ○ STONE FOUND COUNTY: MUSKINGUM  
✱ FENCE ● PIN SET SCALE: 1"=100'

RONALD W. MERCKLE  
OHIO REG. SURVEYOR No. 6473

THE T&W COMPANY  
OHIO REG. SURVEYOR No. 6455

OFFICE COPY  
NOT RECORDABLE

SOUTHWEST CORNER  
SECTION 32