

**DEED DESCRIPTION
FOR
EMORY STRICKLER**

Situated in Highland Township, Muskingum County, Ohio and being 20.616 acres more or less in the Northeast Quarter of Section # 3, Township # 2 North, Range # 5 West in the United States Military lands Survey and being more particularly described as follows:

BEGINNING at an iron pin found at the Southeast corner of the Northeast Quarter of Section # 3, Thence with the south line of the Northeast Quarter of Section # 3 and the lands of now or formerly Arlene Curtis as found in Volume 1555 Page 608 N88°44'37"W a distance of 1196.48 feet to an iron pin set in the center line of Windy Ridge Rd., having passed through an iron pin set at 1166.48 feet, Thence with the center line of Windy Ridge Rd., and with a new division line through the lands of now or formerly Emory Strickler as found in Volume 1066 Page 284 the following four (4) calls:

1. N15°49'11"E a distance of 397.49 feet to an iron pin set.
2. N18°09'50"E a distance of 157.81 feet to an iron pin set.
3. N28°41'26"E a distance of 128.95 feet to an iron pin set.
4. N32°18'50"E a distance of 479.19 feet to a mag nail set in the intersection of Windy Ridge Rd., and Friendship Drive, Thence with the center line of Friendship Drive and with a new division line through the lands of now or formerly Emory Strickler as found in Volume 1066 Page 284 the following nine (9) calls:

1. S23°07'00"E a distance of 58.79 feet to a mag nail set.
2. S32°20'08"E a distance of 49.15 feet to a mag nail set.
3. S42°10'38"E a distance of 44.78 feet to a mag nail set.
4. S52°52'50"E a distance of 47.52 feet to a mag nail set.
5. S61°40'58"E a distance of 49.67 feet to a mag nail set.
6. S67°42'42"E a distance of 50.04 feet to a mag nail set.
7. S70°48'11"E a distance of 248.75 feet to a mag nail set.
8. S69°29'42"E a distance of 174.02 feet to a mag nail set.
9. S67°31'09"E a distance of 143.24 feet to a mag nail set on the east line of the Northeast Quarter of Section # 3, Thence with the east line of the Northeast Quarter of Section # 3 and the lands of now or formerly Leif Erickson as found in Volume 1937 Page 513 S01°26'15"W a distance of 679.42 feet to the beginning and containing 20.616 acres more or less and being part of the property conveyed to Emory Strickler as found in Volume 1066 Page 284.

Part of A.P. # 23-20-03-01-000 20.616 acres ±

Subject to all easements or leases of public record.

Iron pins set are 5/8 inch rebar 30 inches long capped G. SALING 7192.

Bearings are magnetic and are for angle purposes only.

A survey of the above described property was made by Gary D. Saling, Registered Surveyor # S-7192 on April 11, 2008.



**OFFICE COPY
NOT RECORDABLE**

DESCRIPTION
APPROVED
By: *G. Saling* 11/25/2010

LEGEND :

- IRON PIN SET
- IRON PIN FOUND
- STONE MONUMENT FOUND

0' 100' 200' 400'
 SCALE : 1" = 200'

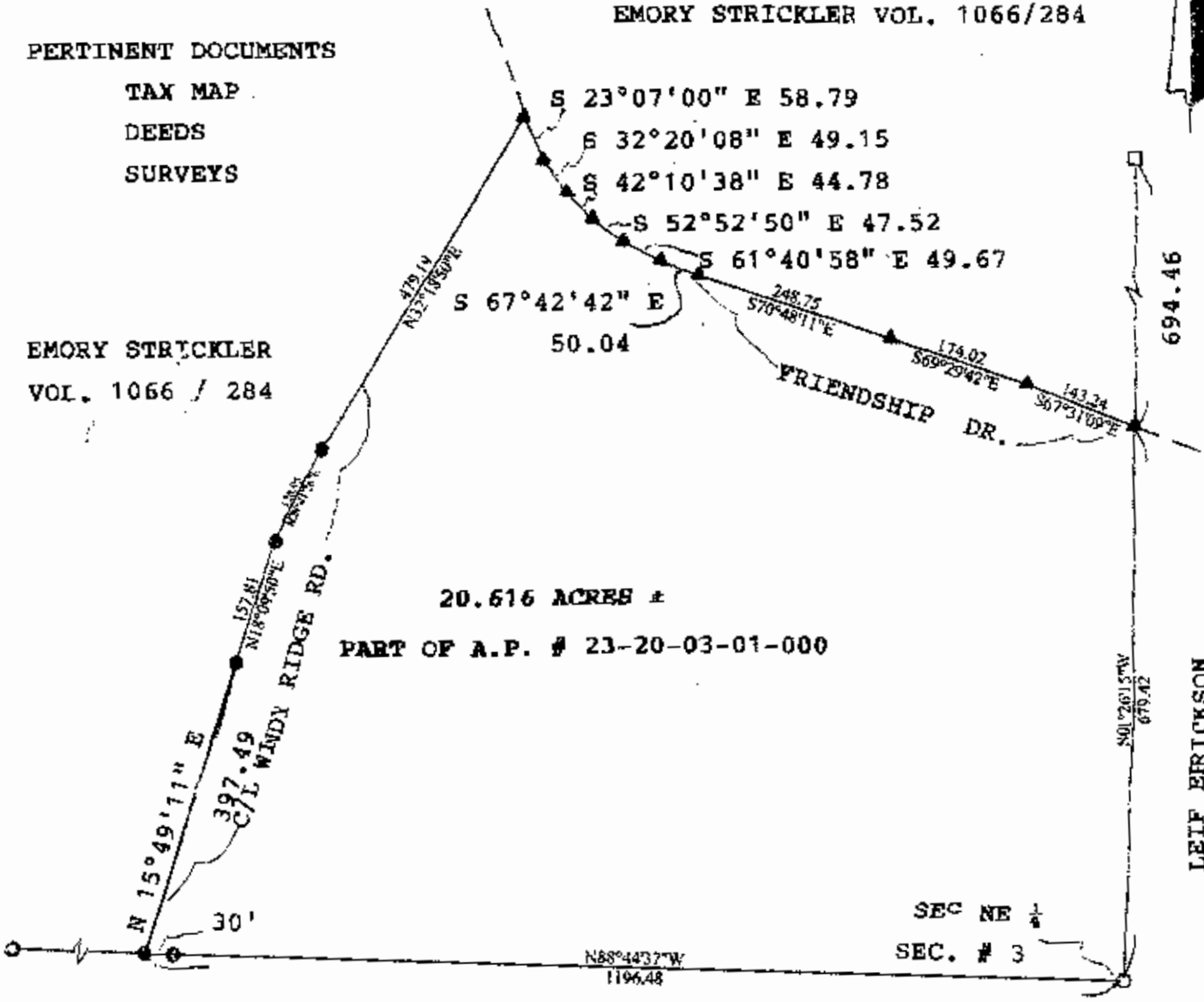


PERTINENT DOCUMENTS

- TAX MAP
- DEEDS
- SURVEYS

EMORY STRICKLER VOL. 1066/284

EMORY STRICKLER
 VOL. 1066 / 284



LEIF ERICKSON
 1937 / 513

SURVEY PLAT OF 20.616 ACRES ±
 EMORY STRICKLER
 NE 1/4 SECTION # 3 T. # 2 N. R. # 5 W.
 HIGHLAND TWP., MUSKINGUM CO., OHIO
 REF : VOL. # 1066 / 284
 APRIL 14, 2008



**OFFICE COPY
 NOT RECORDABLE**

SURVEYED BY:
 GARY D. SALING
 REGISTERED SURVEYOR
 # S - 7192

DESCRIPTION APPROVED
 By: *[Signature]*