

Situated in the state of Ohio, Muskingum County, Highland Township, being a part of the Southeast quarter of Section 3, Township 2, Range 5 of the United States Military Lands and being all of a tract of land in the name of Eugene B., Emma, and Sam B. Hosey as recorded in Volume 740, Page 306 of the Muskingum County Deed Records and being more fully bounded and described as follows:

Commencing at an iron pin (set) at the southeast corner of the Southeast quarter of Section 3, then with the south line of said quarter, North 89 degrees 55 minutes 02 seconds West a distance of 444.83 feet to a point in the center of Windy Ridge Road, said point being North 25 degrees 07 minutes 52 seconds West a distance of 1.18 feet from a railroad spike (set); then leaving said south line and with the centerline of Windy Ridge Road, the following three courses and distance,

North 25 degrees 07 minutes 52 seconds West a distance of 487.03 feet to a
then North 16 degrees 07 minutes 05 seconds West a distance of 330.74 feet to a
then North 11 degrees 37 minutes 44 seconds West a distance of 179.32 feet to a point, said point being the place of beginning of the tract of land hereinafter described; then continuing with the centerline of Windy Ridge Road, the following two courses and distances,

North 12 degrees 05 minutes 38 seconds West a distance of 270.81 feet to a point;
then North 32 degrees 18 minutes 21 seconds West a distance of 147.19 feet to a point; then leaving said road, North 67 degrees 19 minutes 19 seconds East a distance of 224.00 feet to an iron pin (set) and passing through an iron pin at a distance of 12.43 feet; then South 32 degrees 18 minutes 21 seconds East a distance of 147.10 feet to an iron pin (set); then South 12 degrees 05 minutes 38 seconds East a distance of 270.73 feet to a steel bar (found); then South 67 degrees 16 minutes 47 seconds West a distance of 224.00 feet to the place of beginning of the tract of land here in described and passing through an iron pin (set) at a distance of 204.00 feet.

The tract of land herein described contains a total of 2.114 acres more or less and is subject to all legal highways, rights and easements of record.

The bearings contained within this description are not necessarily true or magnetic but are for the calculation of angles within.

A survey of this description was performed by Thomas D. Parnell, R.S. 5910 in March, 1983.

Iron pins set are 5/8 inch rebar.

**OFFICE COPY
NOT RECORDABLE**
PARNELL & ASSOCIATES, INC.

OK WHP
3-16-83

STRICKLER
480-226
520-895

ROWLAND
852-34

EUGENE
HOSEY

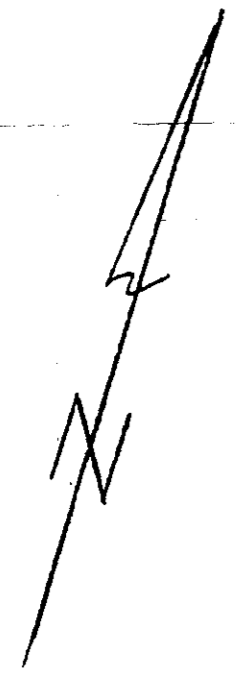
2114 ac.

VOL 740/Pg. 306

CURTIS
826-100

WINDY RIDGE ROAD

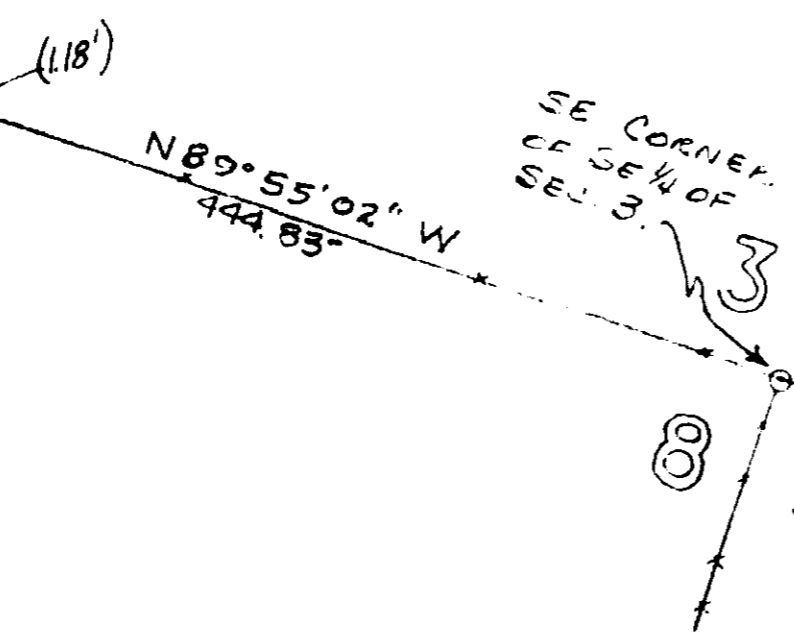
MUSKINGUM COUNTY, OHIO
HIGHLAND TOWNSHIP
BEING A PART OF THE SE 1/4
OF SECTION 3, TOWNSHIP 2,
RANGE 5, U.S.M.L.



- SCALE 1" = 100'
- A FLAT 1 1/2" STEEL BAR FOUND
- POINT
- IRON PIN SET
- IRON PIN FOUND
- ✕ FENCE
- ▽ RAILROAD SPIKE

OFFICE COPY
NOT RECORDABLE

OFFICE COPY
NOT RECORDABLE



PLAT
FOR
JOHN MOHLER

PARNELL & ASSOCIATES
ENGINEERS & SURVEYORS
CAMBRIDGE, OHIO 43725 614-439-1701

JOB NO.	SHEET	DRAWN	APPROVED	DATE
83-01	1	WF		3-83

PHILAS O. PARNELL, R.S. 5910