

DESCRIPTION FOR CONVEYANCE

MINNIE PROUTY

PARCEL NUMBER 23-23-01-05-02-000 (PART)

PARCEL NUMBER 23-23-20-04-09-000 (PART)

BEING A PART OF THE NORTHEAST QUARTER OF SECTION 5, AND A PART OF THE NORTHWEST QUARTER OF SECTION 4, TOWNSHIP 2, RANGE 5, OF THE UNITED STATES MILITARY LANDS, HIGHLAND TOWNSHIP, MUSKINGUM COUNTY, OHIO AND BEING FURTHER DESCRIBED AS FOLLOWS:

BEGINNING AT AN EXISTING STONE AT THE SOUTHEAST CORNER OF THE SAID NORTHEAST QUARTER OF SECTION 5; THENCE SOUTH 89 DEGREES 33 MINUTES 03 SECONDS WEST WITH THE SOUTH LINE OF THE SAID NORTHEAST QUARTER AND WITH THE NORTH LINE OF A TRACT CONVEYED TO C. AND N. WATSON BY DEED RECORDED IN VOLUME 770, PAGE 54 OF THE MUSKINGUM COUNTY DEED RECORDS, 2626.38 FEET TO A POINT, PASSING AN EXISTING IRON PIN (1/2 INCH ID PIPE) AT 1893.13 FEET; THENCE NORTH 00 DEGREES 16 MINUTES 05 SECONDS WEST, WITH THE WEST LINE OF THE SAID NORTHEAST QUARTER, 2232.87 FEET TO AN IRON PIN SET, PASSING AN EXISTING IRON PIN (1/2 INCH ID PIPE) AT 0.79 FEET; THENCE LEAVING THE SAID WEST LINE NORTH 71 DEGREES 16 MINUTES 38 SECONDS EAST 585.00 FEET TO AN IRON PIN SET; THENCE NORTH 74 DEGREES 43 MINUTES 35 SECONDS EAST 338.73 FEET TO AN IRON PIN SET; THENCE NORTH 44 DEGREES 49 MINUTES 05 SECONDS EAST 262.43 FEET TO AN IRON PIN SET; THENCE NORTH 54 DEGREES 03 MINUTES 57 SECONDS EAST 105.47 FEET TO A POINT IN COUNTY ROAD 103 (MERCER ROAD) AT THE EASTERLY CORNER OF A 6.67 MORE OR LESS ACRE TRACT CONVEYED TO G. E. AND C. J. PROUTY BY DEED RECORDED IN VOLUME 545, PAGE 379 OF THE SAID COUNTY RECORDS; THENCE WITH THE CENTER OF SAID COUNTY ROAD THE NEXT 23 COURSES AND DISTANCES:

- 1) SOUTH 45 DEGREES 28 MINUTES 30 SECONDS EAST 36.88 FEET TO A POINT,
- 2) SOUTH 54 DEGREES 47 MINUTES 58 SECONDS EAST 38.93 FEET TO A POINT,
- 3) SOUTH 65 DEGREES 42 MINUTES 32 SECONDS EAST 49.89 FEET TO A POINT,
- 4) SOUTH 78 DEGREES 32 MINUTES 56 SECONDS EAST 250.81 FEET TO A POINT,
- 5) SOUTH 73 DEGREES 49 MINUTES 24 SECONDS EAST 78.01 FEET TO A POINT,
- 6) SOUTH 69 DEGREES 26 MINUTES 00 SECONDS EAST 99.18 FEET TO A POINT,
- 7) SOUTH 64 DEGREES 10 MINUTES 36 SECONDS EAST 115.95 FEET TO A POINT,
- 8) SOUTH 67 DEGREES 34 MINUTES 01 SECONDS EAST 84.52 FEET TO A POINT,
- 9) SOUTH 72 DEGREES 56 MINUTES 30 SECONDS EAST 53.46 FEET TO A POINT,
- 10) SOUTH 79 DEGREES 37 MINUTES 16 SECONDS EAST 56.61 FEET TO A POINT,
- 11) SOUTH 85 DEGREES 39 MINUTES 18 SECONDS EAST 53.30 FEET TO A POINT,
- 12) SOUTH 87 DEGREES 54 MINUTES 23 SECONDS EAST 101.39 FEET TO A POINT,
- 13) SOUTH 87 DEGREES 55 MINUTES 13 SECONDS EAST 97.12 FEET TO A POINT,
- 14) SOUTH 81 DEGREES 47 MINUTES 58 SECONDS EAST 87.77 FEET TO A POINT,
- 15) SOUTH 77 DEGREES 35 MINUTES 28 SECONDS EAST 109.49 FEET TO A POINT,
- 16) SOUTH 69 DEGREES 15 MINUTES 19 SECONDS EAST 102.23 FEET TO A POINT, SAID POINT BEING NORTH 28 DEGREES 08 MINUTES 26 SECONDS WEST 42.76 FEET FROM AN IRON PIN SET,
- 17) SOUTH 65 DEGREES 14 MINUTES 17 SECONDS EAST 109.04 FEET TO A POINT,
- 18) SOUTH 69 DEGREES 28 MINUTES 15 SECONDS EAST 76.06 FEET TO A POINT,
- 19) SOUTH 79 DEGREES 48 MINUTES 20 SECONDS EAST 64.59 FEET TO A POINT,
- 20) SOUTH 83 DEGREES 44 MINUTES 14 SECONDS EAST 177.56 FEET TO A POINT,
- 21) SOUTH 80 DEGREES 49 MINUTES 24 SECONDS EAST 128.10 FEET TO A POINT,
- 22) SOUTH 73 DEGREES 24 MINUTES 26 SECONDS EAST 103.97 FEET TO A POINT,
- 23) SOUTH 67 DEGREES 34 MINUTES 05 SECONDS EAST 185.48 FEET TO A POINT;

W. J. BIEDENBACH AND ASSOCIATES, SURVEYING AND MAPPING
3120 LISA LANE, ZANESVILLE, OHIO 43701 (614)453-4850

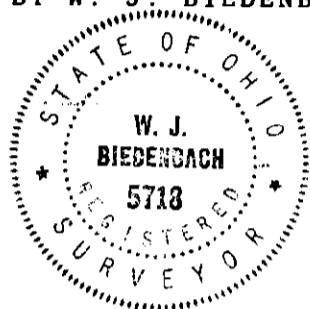
THENCE LEAVING THE SAID ROAD WITH AN EXISTING FENCE SOUTH 00 DEGREES 07 MINUTES 13 SECONDS WEST 670.75 FEET TO AN EXISTING IRON PIN (3/4 INCH ID PIPE), PASSING AN EXISTING IRON PIN (3/4 INCH ID PIPE) AT 15.00 FEET; THENCE WITH THE EXISTING FENCE NORTH 77 DEGREES 08 MINUTES 41 SECONDS WEST 721.96 FEET TO A POINT IN A 36 INCH TREE, PASSING AN EXISTING IRON PIN (3/4 INCH ID PIPE) AT 360.98 FEET; THENCE SOUTH 01 DEGREES 14 MINUTES 45 SECONDS EAST, ALONG THE EAST LINE OF THE SAID NORTHEAST QUARTER OF SECTION 5, 1636.18 FEET TO THE PLACE OF BEGINNING.

CONTAINING 159.778 MORE OR LESS ACRES (TOTAL) 11.324 MORE OR LESS ACRES IN SECTION 4 AND 148.454 MORE OR LESS ACRES IN SECTION 5, SUBJECT TO ALL LEGAL ROAD RIGHT-OF-WAYS AND ALL OTHER APPLICABLE EASEMENTS.

ALL IRON PIN SET ARE 5/8 INCH X 30 INCH REBAR WITH PLASTIC IDENTIFICATION CAPS.

BEARINGS ARE BASED ON THE PREVIOUS SURVEY OF 19.969 MORE OR LESS ACRE FOR MINNIE PROUTY BY W. J. BIEDENBACH, REGISTERED SURVEYOR #5718 AND DATED AUGUST 1978.

D3096B M. PROUTY



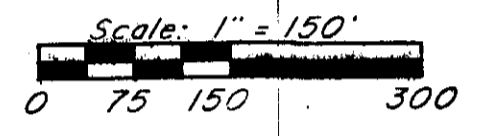
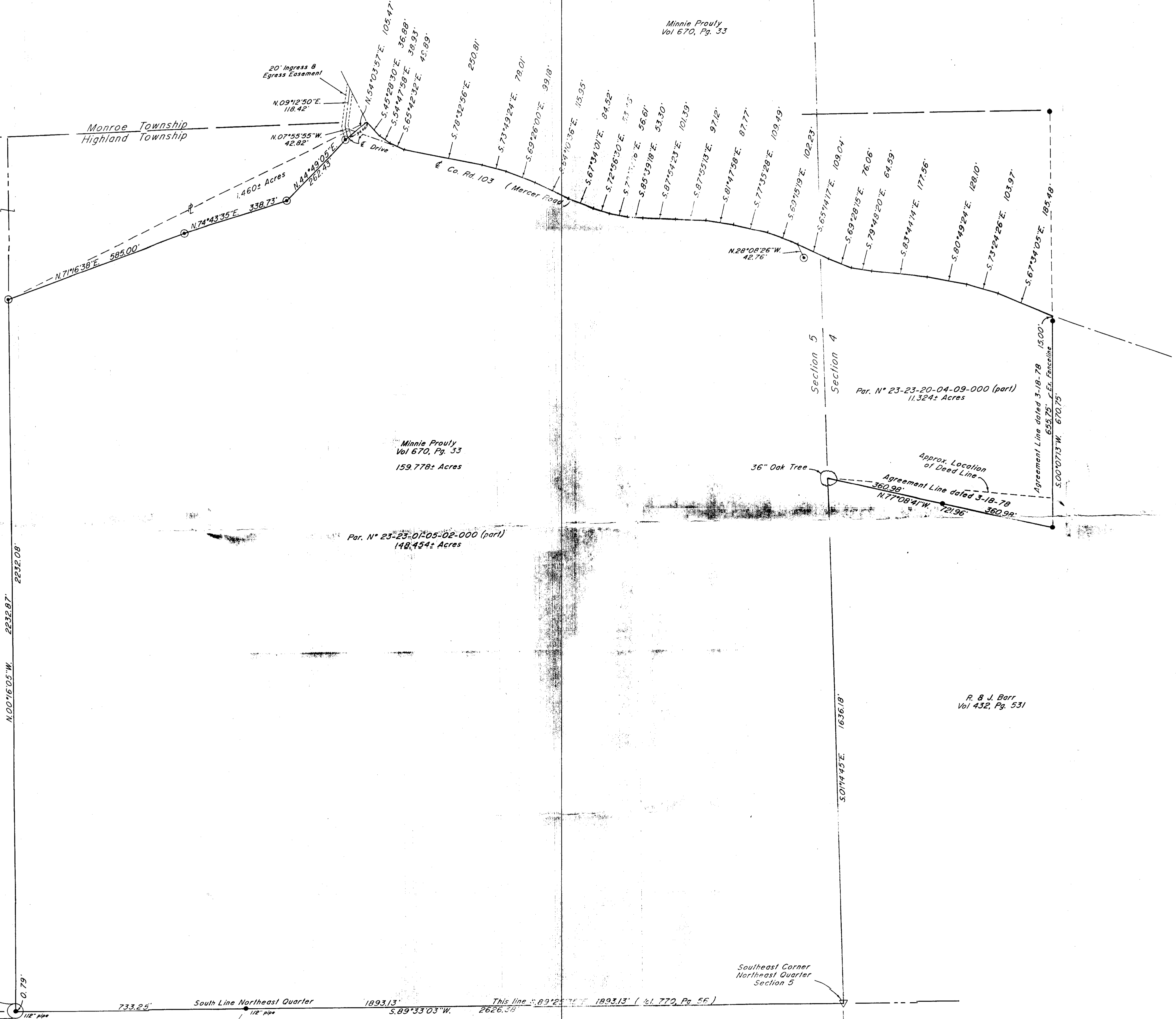
**OFFICE COPY
NOT RECORDABLE**

DESCRIPTION APPROVED
FOR AUDITOR'S TRANSFER

BY J. J. Hambl
12-21-89

Minnie Prouty
Vol 670, Pg. 33

Monroe Township
Highland Township



- ▽ - Existing Stone
- - Existing Iron Pin (3/4" pipe unless otherwise noted)
- ⊙ - Iron Pin Set (3/4" x 30" rebar with plastic lid cap)

Research

- Vol. 670 Pg. 33
- Vol. 770 Pg. 54
- Vol. 762 Pg. 266
- Vol. 432 Pg. 531
- Vol. 545 Pg. 379
- Previous survey 19,969± Acres
- Muskingum County Tax Map

Bearings are based on the previous survey of 19,969± Acres for Minnie Prouty by W. J. Biedenbach, Registered Surveyor #5718 and dated in August of 1978.

Being a part of the Northeast Quarter of Section 5 and a part of the Northwest Quarter of Section 4, Township 2, Range 5, of the United States Military Lands, Highland Township, Muskingum County, Ohio.

I hereby certify to the best of my knowledge and belief the above plat and survey were prepared as prepared by me, this 12th day of December 1989.

**OFFICE COPY
NOT RECORDABLE**
W. J. Biedenbach
Reg. Surveyor #5718

DESCRIPTION APPROVED
FOR AUDITOR'S TRANSFER

BY *J. J. Nambh*
12-21-89

W. J. BIEDENBACH & ASSOC.
SURVEYING & MAPPING
ZANESVILLE, OHIO
(614) 433-4850

| | |
|------------------|-----------------------|
| Drawn by: SDD | Date: 12-15-89 |
| Scale: 1" = 150' | Checked by: M. Prouty |
| Job #: 3096 | M. Prouty |

G. B. C. Prouty
Vol 545, Pg. 379

Minnie Prouty
Vol 670, Pg. 33
159,778± Acres

Par. N° 23-23-01-05-02-000 (part)
148,454± Acres

Par. N° 23-23-20-04-09-000 (part)
11,324± Acres

R. B. J. Barr
Vol 432, Pg. 531

Buckhorn Energy Corp.
Vol 762, Pg. 266

C. B. N. Watson
Vol 770, Pg. 54