

23-30-02-01  
23-30-02-15  
450 S. Fourth St.  
Coshocton, Ohio, 43812  
Phone 740-622-2783  
Fax 740-622-2786  
e-mail [aps@sota-oh.com](mailto:aps@sota-oh.com)

EXHIBIT "A"

April 21, 2006

Description for Larry Ballantine in Highland Township, Muskingum County, Ohio.

### Tract 2

Being a tract of land in Northeast and Southeast Quarters of Section 2, Range 5W, Township 2N, Highland Township, Muskingum County, State of Ohio, and being further described as follows;

Note: North based on a survey by R.A. Emler, Feb. 2005. All steel pins indicated as set are 5/8" x 30" rebars with plastic caps.

Research Data: Deeds, surveys and plats of record.

Beginning at a steel pin set at the Southeast corner of the said Northeast Quarter of said Section 2;

thence, with the East line of said Section 2 the following two (2) courses;

1. South 2 degrees 36' 56" West, a distance of three hundred ten and sixty-nine hundredths (310.69) feet to a recovered 5/8" rebar with plastic cap;
2. continuing South 2 degrees 36' 56", a distance of seven hundred eighty-one and fifty-nine hundredths (781.59) feet to a steel pin set at the Northeast corner of the lands of Morrow's Stoney Point Farm (O.R. 1049/155);

thence, with the North line of the said lands of Morrow's Stoney Point Farm, North 87 degrees 45' 47" West, a distance of two thousand six hundred eleven and fifty-five hundredths (2611.55) feet to a 5/8" rebar with plastic cap recovered on the West line of the said Southeast Quarter of Section 2;

thence, with the said West line of the Southeast Quarter of Section 2 the following two (2) courses;

1. North 2 degrees 36' 03" East, a distance of eight hundred forty-eight and nine hundredths (848.09) feet to a recovered 5/8" rebar with plastic cap;
2. North 2 degrees 31' 32" East, a distance of two hundred fifty-six and eighty-five hundredths (256.85) feet to a point in Township Road 176;

thence, with the centerline of an existing drive and running through the lands of John L. Ballantine, TOD, (O.R. 1611/337) with the following sixteen (16) courses;

1. South 89 degrees 27' 19" East, a distance of fifty-two and sixty-three hundredths (52.63) feet to a set steel pin;
2. crossing into the said Northeast Quarter of Section 2 and continuing South 89 degrees 27' 19" East, a distance of five hundred eighteen and seventy-seven hundredths (518.77) feet to a set steel pin;

3. North 74 degrees 11' 56" East, a distance of one hundred ninety and four hundredths (190.04) feet to a set steel pin;
4. North 40 degrees 57' 26" East, a distance of eighty-five and fifteen hundredths (85.15) feet to a set steel pin;
5. North 00 degrees 09' 54" West, a distance of sixty and eighty-one hundredths (60.81) feet to a set steel pin;
6. North 31 degrees 21' 17" West, a distance of ninety-two and twenty-four hundredths (92.24) feet to a set steel pin;
7. North 2 degrees 41' 39" East, a distance of one hundred thirty and sixteen hundredths (130.16) feet to a set steel pin;
8. North 29 degrees 57' 45" East, a distance of two hundred fifty-four and eighty-three hundredths (254.83) feet to a set steel pin;
9. North 46 degrees 35' 33" East, a distance of two hundred four and seventy-five hundredths (204.75) feet to a set steel pin;
10. North 61 degrees 24' 30" East, a distance of four hundred fifty-five and ninety hundredths (455.90) feet to a set steel pin;
11. South 73 degrees 08' 54" East, a distance of two hundred forty-two and sixty-nine hundredths (242.69) feet to a set steel pin;
12. North 88 degrees 59' 19" East, a distance of eighty-eight and eighty-four hundredths (88.84) feet to a set steel pin;
13. North 60 degrees 14' 42" East, a distance of three hundred fifty-nine and sixty-seven hundredths (359.67) feet to a set steel pin;
14. North 43 degrees 20' 41" East, a distance of three hundred seventy-eight and four hundredths (378.04) feet to a set steel pin;
15. North 29 degrees 48' 33" East, a distance of two hundred twenty-seven and seventy-three hundredths (227.73) feet to a set steel pin;
16. North 59 degrees 39' 24" East, a distance of two hundred sixty-three and eighty-seven hundredths (263.87) feet to a steel pin set on the East line of the said Northeast Quarter of Section 2;

thence, with the said East line of the North Quarter of Section 2, South 2 degrees 11' 26" West, a distance of one thousand seven hundred ninety-one and thirty-three hundredths (1791.33) feet to the point of beginning;

The above described tract contains one hundred twelve and seven hundred six thousandths (112.706) acres, more or less, of which forty-six and three hundred fifty thousandths (46.350) acres are in the said Northeast Quarter of Section 2 and sixty-six and three hundred fifty-six thousandths (66.356) acres are in the said Southeast Quarter of Section 2, as surveyed by R. Scott Johnson, Registered Professional Surveyor No. 6791, April 21, 2006.

This description is intended to convey part of Parcel 2 and Parcel 3 of the lands previously transferred to John L. Ballantine, TOD, (O.R. 1611/337) (Parcel Numbers 23-23-30-02-01 & 23-30-02-15-000).

APPROVED FOR CLOSURE

*[Signature]* 9/5/2006

EXEMPT FROM  
PLANNING COMMISSION

*[Signature]* 9/5/2006

**OFFICE COPY  
NOT RECORDABLE**

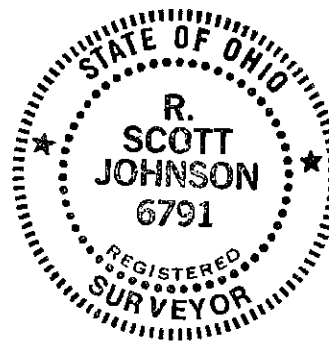
BOUNDARY SURVEY  
FOR  
LARRY BALLANTINE  
IN  
EAST HALF, SECTION 2  
RANGE 5W, TOWNSHIP 2N  
HIGHLAND TOWNSHIP  
MUSKINGUM COUNTY  
OHIO

SCALE 1" = 400' APRIL 21, 2005

RESEARCH DATA  
DEEDS, SURVEYS & PLATS OF RECORD.

- SET 5/8" X 30" REBAR WITH PLASTIC CAP
- ⊕ RECOVERED 5/8" REBAR WITH PLASTIC CAP
- ⊕ RECOVERED 5/8" REBAR
- RECOVERED 3/4" PIN (DISTURBED)

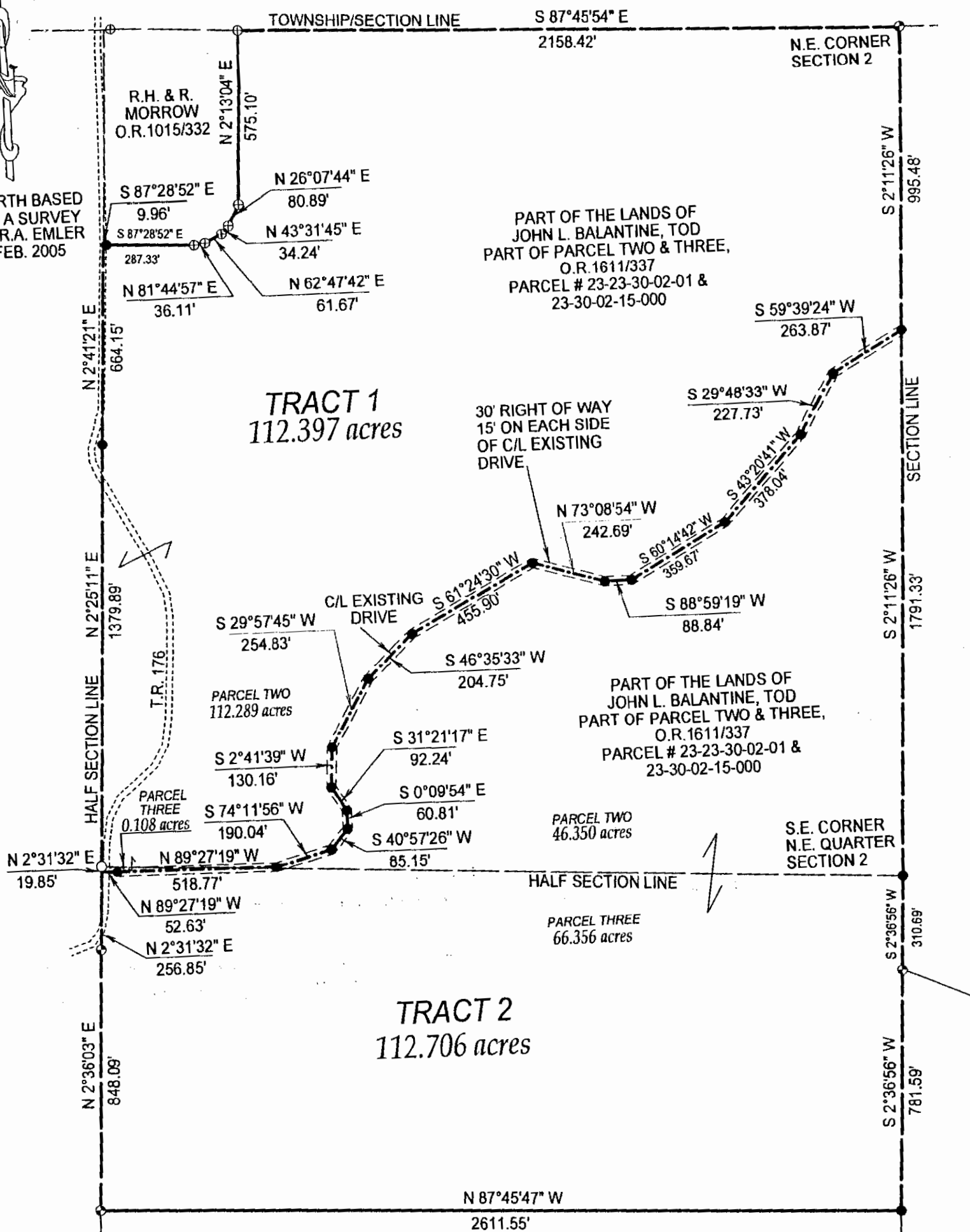
NOTE  
THIS SURVEY IS NOT COMPLETE  
WITHOUT PAGE 2.



**OFFICE COPY  
NOT RECORDABLE**

PREPARED BY  
**AMERICAN PRECISION SURVEYING**  
450 S. FOURTH ST.  
COSHOCOTON, OHIO  
43812  
740-622-2783

NORTH BASED  
ON A SURVEY  
BY R.A. EMLER  
FEB. 2005



**OFFICE COPY  
NOT RECORDABLE**

NOTE  
THIS PLAT IS NOT COMPLETE  
WITHOUT PAGE 1

APPROVED FOR CLOSURE  
*[Signature]* 9/5/2006



PREPARED BY  
**AMERICAN PRECISION SURVEYING**  
450 S. FOURTH ST.  
COSHOCOTON, OHIO  
43812  
740-622-2783

**EXEMPT FROM  
PLANNING COMMISSION**  
*[Signature]* 9/5/2006