

23-30-02-01-001
450 S. Fourth St.
Coshocton, Ohio, 43812
Phone 740-622-2783
Fax 740-622-2786
e-mail aps@sota-oh.com

EXHIBIT "A"

April 21, 2006

Description for Larry Ballantine in Highland Township, Muskingum County, Ohio.

Tract 1

Being a tract of land in Northeast and Southeast Quarters of Section 2, Range 5W, Township 2N, Highland Township, Muskingum County, State of Ohio, and being further described as follows;

Note: North based on a survey by R.A. Emler, Feb. 2005. All steel pins indicated as set are 5/8" x 30" rebars with plastic caps.

Research Data: Deeds, surveys and plats of record.

Beginning at a 5/8" rebar with plastic cap recovered at the Northeast corner of said Section 2;

thence, with the East line of said Section 2, South 2 degrees 11' 26" West, a distance of nine hundred ninety-five and forty-eight hundredths (995.48) feet to a steel pin set on the centerline of an existing drive;

thence, with the said centerline of the existing drive and running through the lands of John L. Ballantine, TOD, (O.R. 1611/337) with the following sixteen (16) courses;

1. South 59 degrees 39' 24" West, a distance of two hundred sixty-three and eighty-seven hundredths (263.87) feet to a set steel pin;
2. South 29 degrees 48' 33" West, a distance of two hundred twenty-seven and seventy-three hundredths (227.73) feet to a set steel pin;
3. South 43 degrees 20' 41" West, a distance of three hundred seventy-eight and four hundredths (378.04) feet to a set steel pin;
4. South 60 degrees 14' 42" West, a distance of three hundred fifty-nine and sixty-seven hundredths (359.67) feet to a set steel pin;
5. South 88 degrees 59' 19" West, a distance of eighty-eight and eighty-four hundredths (88.84) feet to a set steel pin;
6. North 73 degrees 08' 54" West, a distance of two hundred forty-two and sixty-nine hundredths (242.69) feet to a set steel pin;
7. South 61 degrees 24' 30" West, a distance of four hundred fifty-five and ninety hundredths (455.90) feet to a set steel pin;
8. South 46 degrees 35' 33" West, a distance of two hundred four and seventy-five hundredths (204.75) feet to a set steel pin;
9. South 29 degrees 57' 45" West, a distance of two hundred fifty-four and eighty-three hundredths (254.83) feet to a set steel pin;
10. South 2 degrees 41' 39" West, a distance of one hundred thirty and sixteen hundredths (130.16) feet to a set steel pin;
11. South 31 degrees 21' 17" East, a distance of ninety-two and twenty-four hundredths (92.24) feet to a set steel pin;
12. South 00 degrees 09' 54" East, a distance of sixty and eighty-one hundredths (60.81) feet to a set steel pin;
13. South 40 degrees 57' 26" West, a distance of eighty-five and fifteen hundredths (85.15) feet to a set steel pin;
14. South 74 degrees 11' 56" West, a distance of one hundred ninety and four hundredths (190.04) feet to a set steel pin;
15. crossing into the said Southeast Quarter of Section 2, North 89 degrees 27' 19" West, a distance of five hundred eighteen and seventy-seven hundredths (518.77) feet to a set steel pin;
16. continuing North 89 degrees 27' 19" West, a distance of fifty-two and sixty-three hundredths (52.63) feet to a point on the West line of the said Southeast Quarter and in Township Road 176;

thence, with the said West line of the Southeast Quarter, North 2 degrees 31' 32" East, a distance of nineteen and eighty-five hundredths (19.85) feet to a 3/4" pin (disturbed) recovered at the Southwest corner of the said Northeast Quarter of Section 2;

thence, with the West line of the said Northeast Quarter the following two (2) courses;

1. North 2 degrees 25' 11" East, a distance of one thousand three hundred seventy-nine and eighty-nine hundredths (1379.89) feet to a set steel pin;
2. North 2 degrees 41' 21" East, a distance of six hundred sixty-four and fifteen hundredths (664.15) feet to a point at the Southwest corner of the lands of R.H. & R. Morrow (O.R. 1015/332);

thence, with the said lands of R.H. & R. Morrow the following seven (7) courses;

1. South 87 degrees 28' 52" East, a distance of nine and ninety-six hundredths (9.96) feet to a set steel pin;
2. continuing South 87 degrees 28' 52" East, a distance of two hundred eighty-seven and thirty-three hundredths (287.33) feet to a recovered 5/8" rebar;
3. North 81 degrees 44' 57" East, a distance of thirty-six and eleven hundredths (36.11) feet to a recovered 5/8" rebar;
4. North 62 degrees 47' 42" East, a distance of sixty-one and sixty-seven hundredths (61.67) feet to a recovered 5/8" rebar;
5. North 43 degrees 31' 45" East, a distance of thirty-four and twenty-four hundredths (34.24) feet to a recovered 5/8" rebar;
6. North 26 degrees 07' 44" East, a distance of eighty and eighty-nine hundredths (80.89) feet to a recovered 5/8" rebar;
7. North 2 degrees 13' 04" East, a distance of five hundred seventy-five and ten hundredths (575.10) feet to a 5/8" rebar recovered on the North line of said Section 2 and said Highland Township;

thence, with the said North line of Section 2 and Highland Township, South 87 degrees 45' 54" East, a distance of two thousand one hundred fifty-eight and forty-two hundredths (2158.42) feet to the point of beginning;

The above described tract contains one hundred twelve and three hundred ninety-seven thousandths (112.397) acres, more or less, of which one hundred twelve and two hundred eighty-nine thousandths (112.289) acres are in the said Northeast Quarter of Section 2 and zero and one hundred eight thousandths (0.108) acres are in the said Southeast Quarter of Section 2, as surveyed by R. Scott Johnson, Registered Professional Surveyor No. 6791, April 21, 2006.

This description is intended to convey part of Parcel 2 and Parcel 3 of the lands previously transferred to John L. Ballantine, TOD, (O.R. 1611/337) (Parcel Numbers 23-23-30-02-01 & 23-30-02-15-000).

APPROVED FOR CLOSURE

9/5/2006

EXEMPT FROM
PLANNING COMMISSION

9/5/2006

**OFFICE COPY
NOT RECORDABLE**

BOUNDARY SURVEY
FOR
LARRY BALLANTINE
IN
EAST HALF, SECTION 2
RANGE 5W, TOWNSHIP 2N
HIGHLAND TOWNSHIP
MUSKINGUM COUNTY
OHIO

SCALE 1" = 400' APRIL 21, 2005

RESEARCH DATA
DEEDS, SURVEYS & PLATS OF RECORD.

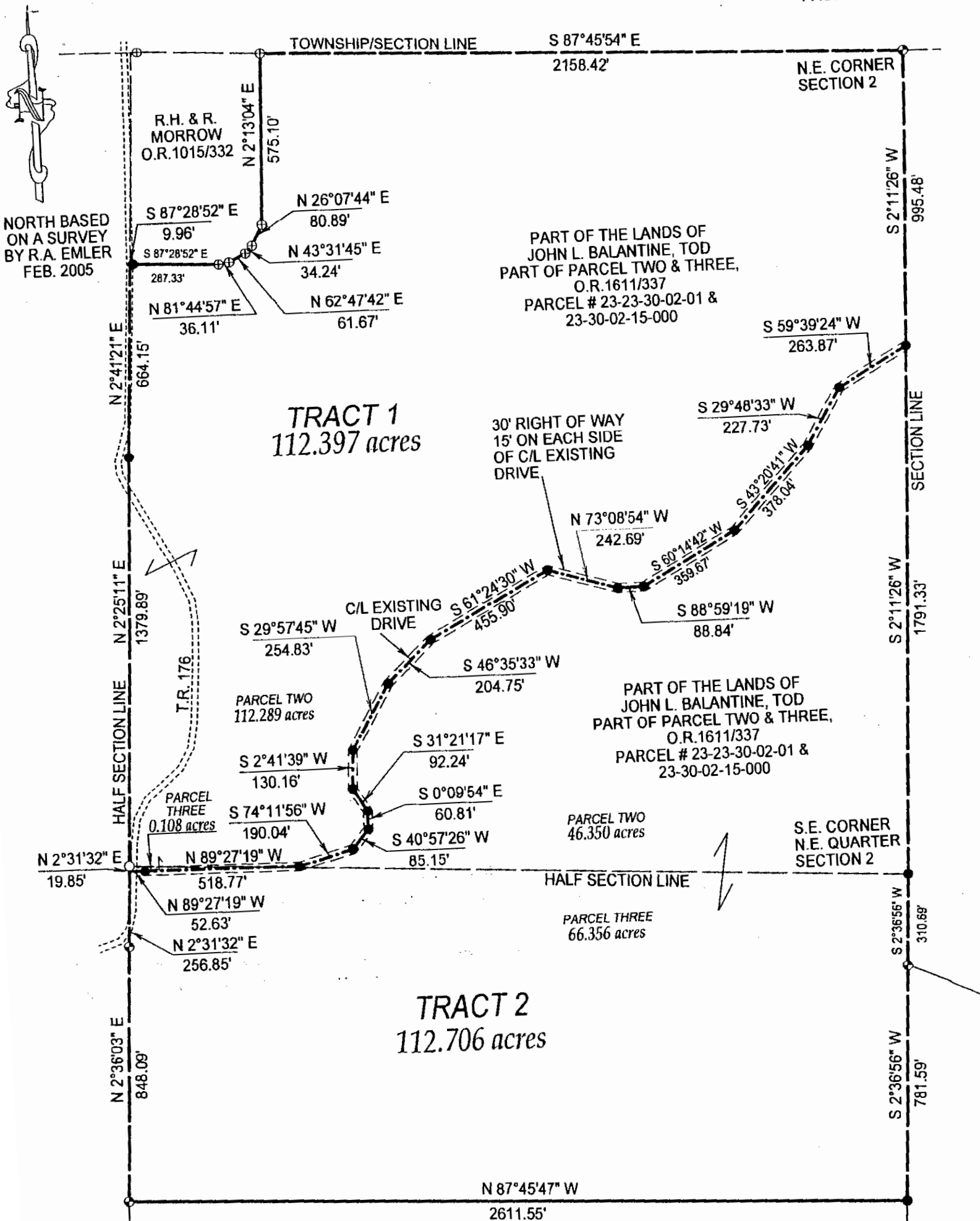
- SET 5/8" X 30" REBAR WITH PLASTIC CAP
- ⊕ RECOVERED 5/8" REBAR WITH PLASTIC CAP
- ⊕ RECOVERED 5/8" REBAR
- RECOVERED 3/4" PIN (DISTURBED)

NOTE
THIS SURVEY IS NOT COMPLETE
WITHOUT PAGE 2.



**OFFICE COPY
NOT RECORDABLE**
R. Scott Johnson
R. SCOTT JOHNSON R.P.S. 6791

PREPARED BY
AMERICAN PRECISION SURVEYING
450 S. FOURTH ST.
COSHOCOTON, OHIO
43812
740-622-2783

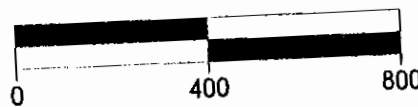


**OFFICE COPY
NOT RECORDABLE**

NOTE
THIS PLAT IS NOT COMPLETE
WITHOUT PAGE 1

APPROVED FOR CLOSURE

[Signature] 9/5/2006



PREPARED BY
AMERICAN PRECISION SURVEYING
450 S. FOURTH ST.
COSHOCOTON, OHIO
43812
740-622-2783

EXEMPT FROM
PLANNING COMMISSION

[Signature] 9/5/2006