

ALAN DONAKER SURVEYING

Alan Donaker, P.S.

19849 TR 383

Walhonding, OH 43843

Phone: (740) 327-7001

Fax: (740) 327-6101

Being 115.937 acres, more or less, in the Northeast Quarter of Section 13, Township 2 North, Range 5 West, United States Military Lands, in the Township of Highland, in the County of Muskingum, in the State of Ohio, conveyed to Thomas and Mary M. Pieczynski, DR 1085-119 (remainder), Parcel No. 23-23-50-13-05 (remainder), and more particularly described as follows:

Commencing at a stone found at the Northeast corner of the Northeast Quarter of Section 13, said stone being the TRUE POINT OF BEGINNING;

thence, with the West line of Section 12, S. 02° 21' 41" W. a distance of 2658.28' to a stone found;

thence, with the East and West one-half Section line, the following two (2) courses;

1. thence, N. 87° 24' 50" W. a distance of 2260.00' to a 5/8" rebar set;
2. thence, N. 87° 24' 50" W. a distance of 27.35' to point in the centerline of White Eyes Road, Township Road 101;

thence, with the centerline of White Eyes Road, Township Road 101, and the property line of Thomas and Mary M. Pieczynski, DR 1079-205, the following 11 courses;

1. thence, N. 11° 05' 30" E. a distance of 48.19' to a point;
2. thence, N. 14° 03' 50" E. a distance of 58.77' to a point;
3. thence, N. 20° 47' 52" E. a distance of 225.44' to a point;
4. thence, N. 16° 28' 01" E. a distance of 105.96' to a point;
5. thence, N. 10° 45' 53" E. a distance of 54.13' to a point;
6. thence, N. 04° 08' 50" E. a distance of 57.65' to a point;
7. thence, N. 05° 55' 16" W. a distance of 77.13' to a point;
8. thence, N. 08° 28' 52" W. a distance of 217.94' to a point;
9. thence, N. 05° 48' 16" W. a distance of 160.13' to a point;
10. thence, N. 05° 52' 34" W. a distance of 266.38' to a point;
11. thence, N. 04° 03' 58" W. a distance of 292.71' to a point;

thence, with the property line of Dale and Betty Wright, DR 1158-937, the following 3 courses;

1. thence, N. 83° 27' 10" E. a distance of 30.50' to a 5/8" rebar found;
2. thence, N. 83° 27' 10" E. a distance of 306.21' to a 5/8" rebar found;
3. thence, N. 04° 20' 28" E. a distance of 383.12' to a 5/8" rebar found;

thence, with the property line of Larry A. and Linda K. Turk, DR 676-264, S. 87° 05' 29" E. a distance of 537.67' to a 3/4" pipe found;

thence, with the property line of Robert F. Shivers, II and Ellen Rose, DR 1752-739, the following 2 courses:

1. thence, S. 87° 12' 24" E. a distance of 318.85' to a ¾" pipe found (bent);
2. thence, N. 03° 01' 23" E. a distance of 688.63' to a 5/8" rebar set;

thence, with the South line of Section 8, S. 87° 28' 29" E. a distance of 1096.74' to the TRUE POINT OF BEGINNING, containing 115.937 acres, more or less, including public road right-of-way and is subject to all easements, rights-of-way, or restrictions, whether recorded or implied.

Bearings are based on DR 1158-937 and are for angular calculations only.

All 5/8" rebars set are 30" long with plastic cap marked "AMD 8050".

Pertinent Documents: Tax Map and all deeds shown

Surveys by: Raymond M. Roberts, Steven L. Gardner, Howard E. Smith, Jerry L. Gamble, and Joseph T. Spilker

Description and plat by Alan Donaker, Professional Surveyor, #8050, from a survey of the premises on December 30, in the year of our Lord Two Thousand Three.

**OFFICE COPY
NOT RECORDABLE**

DESCRIPTION APPROVED
FOR AND TO BE TRANSFER
BY ASD
12-31-2003

This property is subject to all easements, rights-of-way or restrictions, whether recorded or implied.

ALAN DONAKER SURVEYING
 19849 TR 383
 Walhonding, OH 43843
 Telephone: (740) 327-7001
 Fax: (740) 327-6101

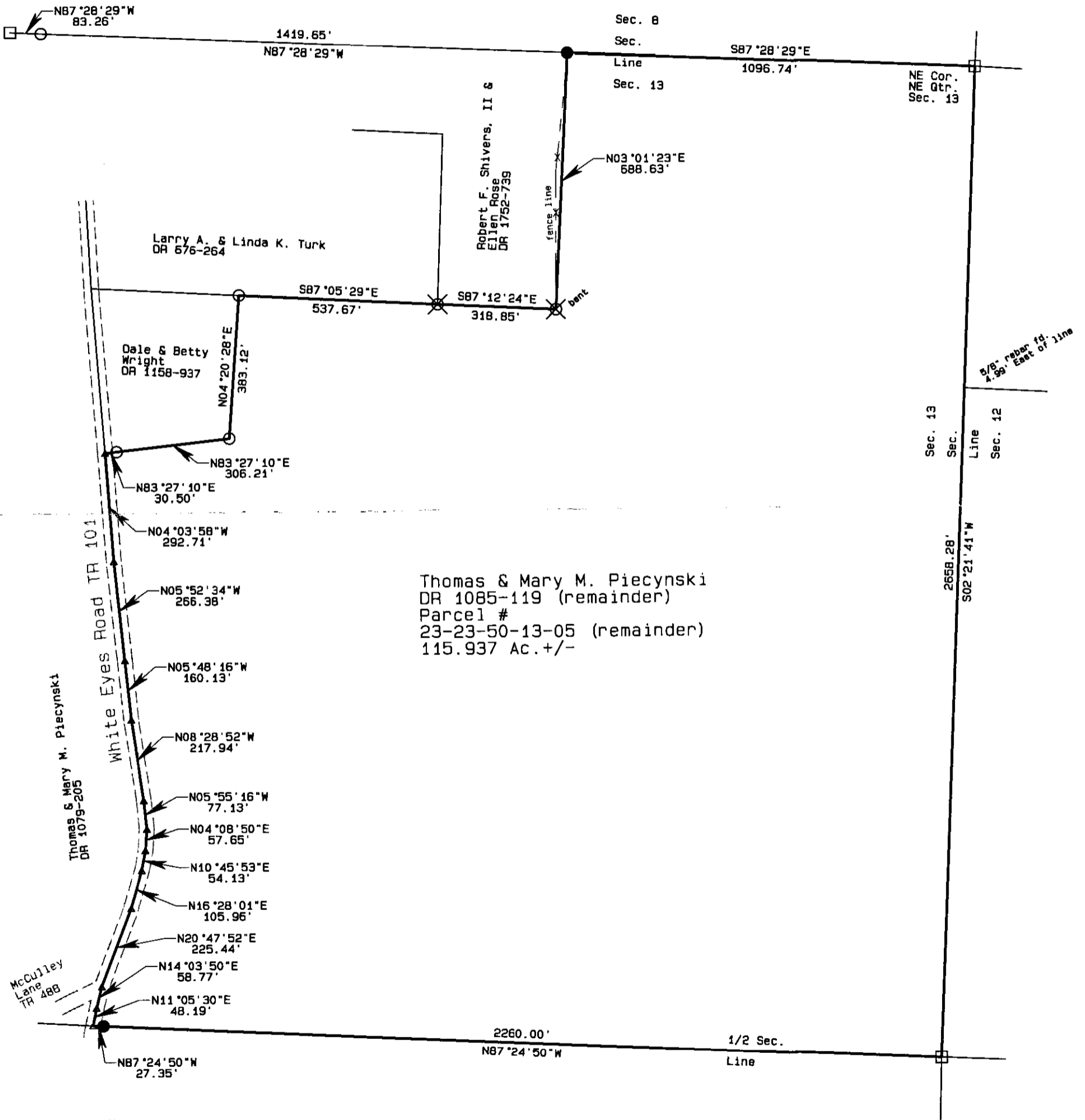
Pertinent Documents: Tax Map
 All Deeds shown

Bearings are based on
 DR 1158-937 and are for
 angular calculations only

Surveys By: Raymond M.
 Roberts, Steven L. Gardner,
 Howard E. Smith, Jerry L.
 Gamble, Joseph T. Spilker



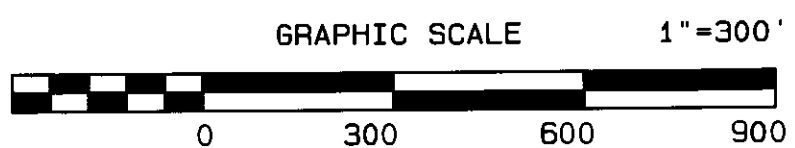
- All 5/8" rebars set are 30" long with plastic cap marked "AMD 8050"
- 5/8" rebar found
- ⊗ 3/4" pipe found
- Stone found
- ▲ Point



DESCRIPTION APPROVED
 FOR AUDIT AND TRANSFER
 BY *[Signature]*
 12-31-2003

OFFICE COPY 12/30/03
NOT RECORDABLE

I, Alan Donaker, P.S., 8050, hereby certify that the foregoing is a boundary survey pursuant to Chapter 307.37 Ohio Administrative Code and to be correct to the best of my knowledge and belief.



Thomas & Mary M. Pieczynski
 DR 1085-119
 115.937 Ac. +/-
 NE Qtr., Sec. 13, T2N, R5W
 United States Military Lands
 Highland Township
 Muskingum County, Ohio
 Date: December 30, 2003