

TRACT 1

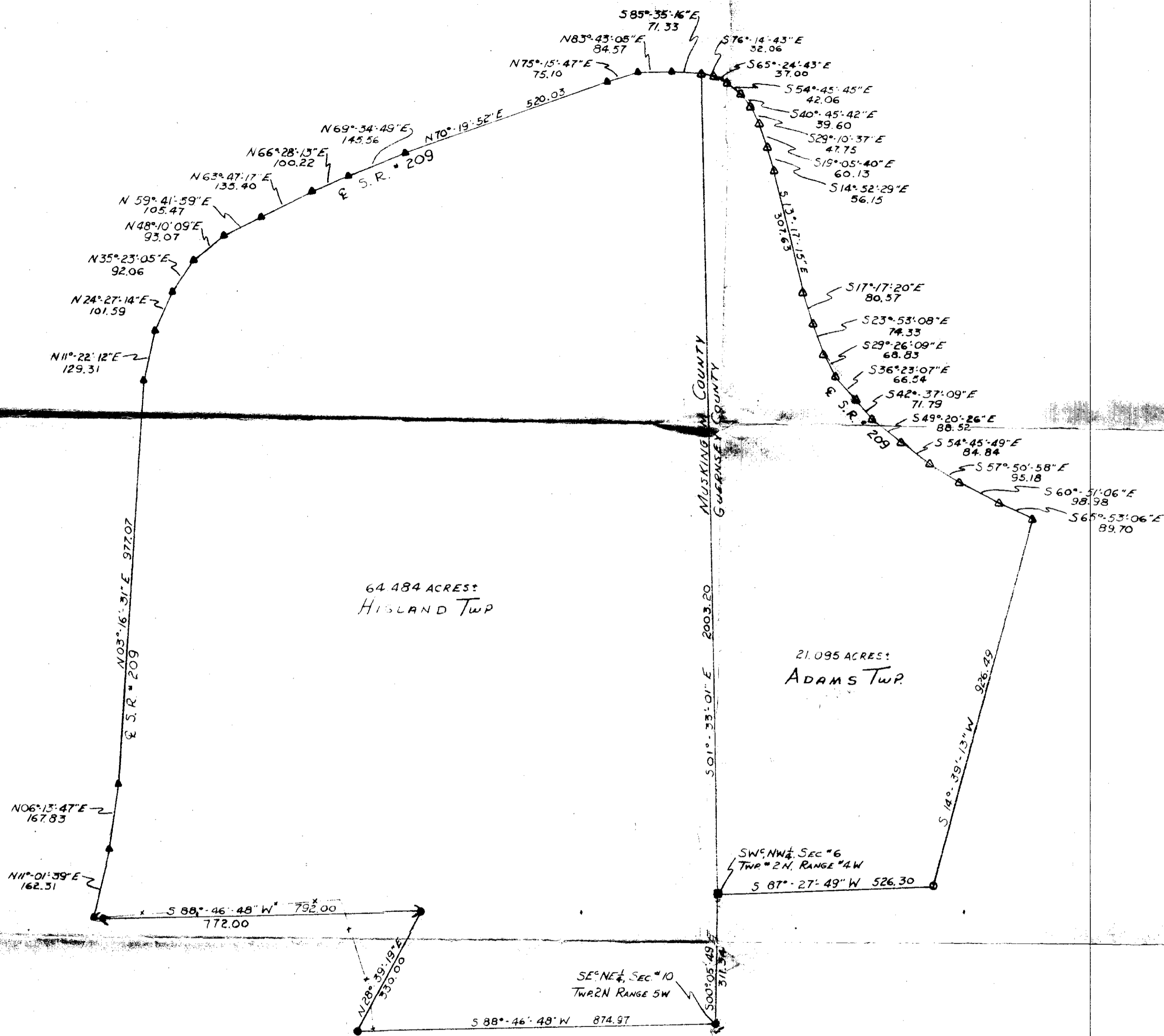
Situated in Highland Township, Tuskulgee County, Ala., and being a part of the northeast quarter of Section 10, Township 2 North, Range 10 West, and being more particularly described as follows:

BEGINNING at an iron pin set at the southeast corner of the northeast quarter of Section 10, thence on the south line of the northeast quarter of Section 10, S 88° 45' 45" E, a distance of 372.57 feet to an iron pin set, thence S 16° 33' 19" E, a distance of 330.00 feet to an iron pin set, thence S 31° 45' 45" E, a distance of 792.00 feet to a railroad spike set in the center of State Route 2002, (having passed through an iron pin set at 777.00 feet), thence with the center of SR. 2002 the next fifteen (15) corners:

1. S 11° 01' 59" E, a distance of 152.51 feet to a railroad spike set.
2. S 66° 13' 47" E, a distance of 157.02 feet to a railroad spike set.
3. S 03° 16' 31" E, a distance of 377.02 feet to a railroad spike set.
4. S 11° 22' 12" E, a distance of 133.51 feet to a railroad spike set.
5. S 24° 27' 15" E, a distance of 141.52 feet to a railroad spike set.
6. S 35° 23' 05" E, a distance of 92.00 feet to a railroad spike set.
7. S 48° 17' 09" E, a distance of 91.07 feet to a railroad spike set.
8. S 59° 41' 59" E, a distance of 123.47 feet to a railroad spike set.
9. S 63° 47' 17" E, a distance of 135.10 feet to a railroad spike set.
10. S 66° 28' 15" E, a distance of 133.77 feet to a railroad spike set.
11. S 45° 34' 49" E, a distance of 145.05 feet to a railroad spike set.
12. S 75° 19' 57" E, a distance of 57.13 feet to a railroad spike set.
13. S 75° 15' 47" E, a distance of 75.10 feet to a railroad spike set.
14. S 23° 43' 25" E, a distance of 14.17 feet to a railroad spike set.
15. S 25° 37' 15" E, a distance of 71.40 feet to a railroad spike set on the Tuskulgee/Carraway County line, thence on the Tuskulgee/Carraway County line

the following two (2) corners:
1. S 01° 35' 01" E, a distance of 27.00 feet to a corner found.
2. S 05° 05' 43" E, a distance of 211.00 feet to the northeast corner of Section 10, 64.461 acres more or less, and being a part of the northeast quarter of Section 10, 2002, page 589 of the deed records of Tuskulgee County, Ala. and being 64.461 acres more or less.

Subject to all easements or liens of public record.
Iron pin sets are 5/8 inch poles.



PEARL DEVELOPMENT COMPANY
 SURVEY PLAT OF 64.484 ACRES: MUSKINGUM COUNTY
 21.095 ACRES: GUERNSEY COUNTY
 PART OF SECTION #6 GUERNSEY COUNTY, OHIO
 TOWNSHIP #2N, RANGE #4W
 PART OF SECTION #10 MUSKINGUM COUNTY OHIO
 TOWNSHIP #2N, RANGE #5W
 REF: VOL. 284 PAGE 402 GUERNSEY CO.
 VOL. 502 PAGE 389 MUSKINGUM CO.
 SCALE: 1" = 200' 2-2-79

LEGEND!

- STONE FOUND
- IRON PIN FOUND
- IRON PIN SET
- △ RAILROAD SPIKE FOUND
- ▲ RAILROAD SPIKE SET

SURVEYED BY:

Joseph J Spelker
 REGISTERED SURVEYOR # S-5862

