

23-60-10-09 PART
ADDRESS N/A

Deed Description

for

Larry R and Mary A. Showman

Tract V

Situated in the Township of Highland, County of Muskingum, State of Ohio and being 5.754 acres in the northeast quarter of section 10 of Township 2 north Range 5 west of the United States Military District and being more particularly described as follows,

Commencing at a 1/2 inch capped rebar found at the southwest corner of the northeast quarter of said section 10 thence with the west line of said quarter N 02° 44' 11" E a distance of 2635.01 feet to a point in the center of Stoney Point road having passed through an iron pin set at 2605.01 feet thence with the north line of said quarter S 87° 18' 24" E a distance of 832.34 feet to an iron pin set the **BEGINNING** thence continuing with said north quarter line and with the lands of R. King as recorded in Deed Volume 572 page 322 S 87° 18' 24" E a distance of 571.94 feet to a point in an old road bed having passed through an iron pin set at 540.13 feet thence with said old road bed S 27° 14' 03" E a distance of 65.12 feet to a point in the center of Louana road thence with said road and with the lands of Gilbert Templton as recorded in Deed Volume 814 page 321 the next three calls,

1) S 23° 03' 09" W a distance of 193.80 feet to a point.

2) S 16° 20' 56" W a distance of 76.12 feet to a point.

3) S 09° 31' 35" E a distance of 91.42 feet to a point thence leaving said road and continuing with the lands of said Templton the next three calls,

1) S 87° 50' 52" W a distance of 188.33 feet to a 1/2 inch rebar found having passed through an iron pin set at 40.00 feet.

2) S 02° 12' 33" E a distance of 229.71 feet to a 1/2 inch rebar found.

3) N 87° 56' 34" E a distance of 174.77 feet to a 1/2 inch rebar found in the center of Louana road having passed through an iron pin set at 149.77 feet thence continuing with the lands of said Templton and with the center of said Louana road the next two calls,

1) S 07° 44' 52" W a distance of 49.09 feet to a railroad spike found.

2) S 14° 22' 28" E a distance of 89.97 feet to a point in State route 209 thence with the center of said road and with the lands of Gilbert Templton as recorded in Deed Volume 832 page 264 the next three calls,

1) S 39° 27' 29" W a distance of 82.77 feet to a point.

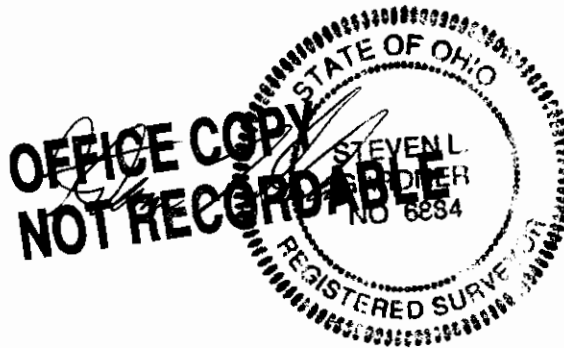
2) S 28° 26' 37" W a distance of 101.59 feet to a point.

3) S 15° 21' 34" W a distance of 106.52 feet to a point thence leaving said road and with the east line of Stoney Point road as recorded in Plat Book 16 page 4 then next two calls,

1) N 17° 32' 41" W a distance of 880.65 feet to a concrete monument found having passed through a concrete monument found at 59.77 feet.

2) N 35° 53' 47" W a distance of 232.60 feet to a point thence with a line through the lands of Larry R. and Mary A. Showman as recorded in Deed Volume 1156 page 773 N 03° 05' 05" E a distance of 20.31 feet to the **BEGINNING** and containing 5.754 acres and being a part of the property conveyed in Deed Volume 1156 page 773 and being a part of auditor's parcel # 23-60-10-09.000

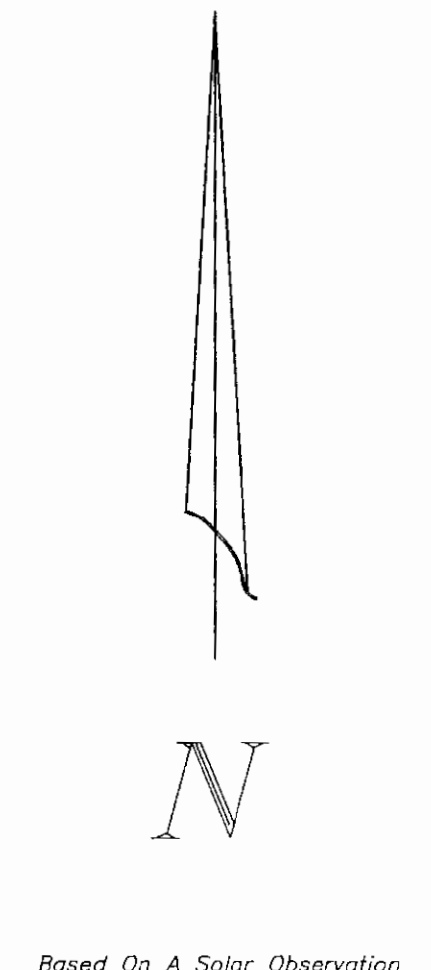
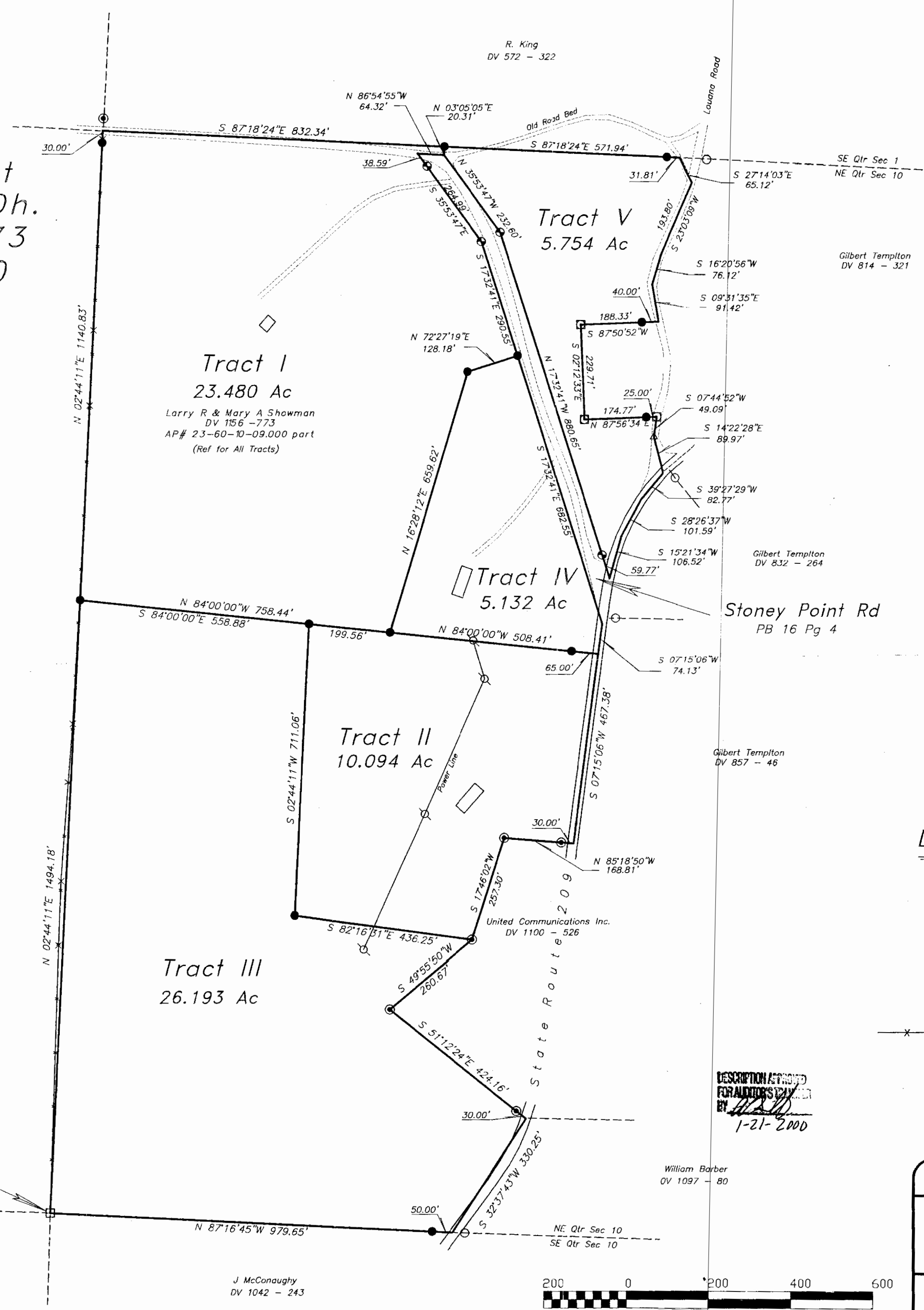
Subject to all leases or easements of record. Iron pins set are 5/8 inch rebar, 30 inches long capped "GARDNER PS-6884". Bearings are true and are based on a solar observation. A survey of the above described property was made on January 21, 2000 by Steven L. Gardner, registered surveyor #6884.



DESCRIPTION APPROVED
FOR AUDITOR'S TRANSFER
BY MSJ
1-21-2000

Survey Plat of 70.653 Acres
 Larry R. & Mary A. Showman
 N.E. Quarter Section 10

Twp. 2 North Range 5 West
 United States Military District
 Highland Twp. Muskingum Co. Oh.
 Ref: Deed Volume 1156 Page 773
 Scale 1" = 200' Jan 21, 2000



Notes:

Topographic features shown such as buildings, poles etc. are intended for orientation use only and do not represent a mortgage location or a survey of any easements, right-of-ways or setback lines except as specifically noted.

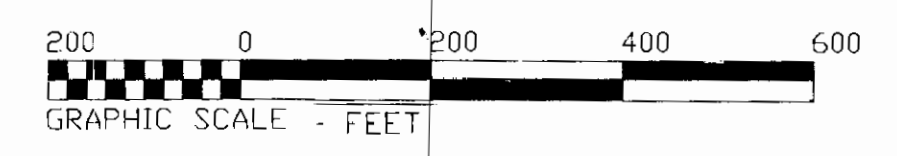
Pertinant Documents used in addition to those shown hereon:
 Surveys by Joseph T Spilker, Roger W Claus,
 County Tax Maps and selected priors

Legend:

- 5/8" Capped Rebar Set
- ⊙ 5/8" Capped Rebar Found
- 1/2" Capped Rebar Found
- 1/2" Rebar Found
- 5/8" Rebar Found
- ▲ Rail Road Spike Found
- Concrete Monument Found
- x-x- Fence Line

Surveyed By:
OFFICE COPY
NOT RECORDABLE
 STEVEN L. GARDNER
 PS 6884
 Gardner Surveying
 60707 Stewart Rd
 Cambridge, Ohio
 43725
 740-432-5369

SW Corner
 NE Quarter
 Section 10



Gardner Surveying
 60707 Stewart Rd.
 Cambridge, Ohio 43725
 Steven L. Gardner PS 6884
 740-432-5369

Scale: 1" = 200' Job#: 400983
 File: SHOWMAN.CRD Date: Jan 21, 2000
 File: SHOWMAN.DWG Revised:

DESCRIPTION AS SHOWN
 FOR RECORD'S PURPOSE
 BY [Signature]
 1-21-2000