

ALAN DONAKER SURVEYING

Alan Donaker, P.S.

19849 TR 383

Walhonding, OH 43843

Phone: (740) 327-7001

Fax: (740) 327-6101

TRACT 3

Being 135.032 acres, more or less, in the Southeast Quarter of Section 25, Third Quarter, Township 2 North, Range 5 West, United States Military Lands, in the Township of Highland, in the County of Muskingum, in the State of Ohio, conveyed to David J. and Naomi Troyer, OR 2140-612 (part, parcel 1), Parcel No. 23-70-25-14-000 (part, 52.607 acres), and Parcel No. 23-70-25-13-000 (part, 44.925 acres) and Parcel No. 23-70-25-12-000 (part, 37.500 acres), and more particularly described as follows:

Commencing at a 5/8" rebar found at the Northwest corner of the Southeast Quarter of Section 25, said rebar being the TRUE POINT OF BEGINNING;

thence, with the East/West 1/2 Section line of said section 25, S. 88° 34' 03" E. a distance of 2062.54' to a 5/8" rebar found;

thence, through the property of David J. and Naomi Troyer, OR 2140-612, the following 3 courses:

1. thence, S. 00° 59' 06" W. a distance of 786.93' to a 5/8" rebar found;
2. thence, S. 05° 03' 30" W. a distance of 1084.79' to a 5/8" rebar set;
3. thence, S. 05° 03' 30" W. a distance of 15.00' to a point in the centerline of Beach Lane, Township Road 629;

thence, with the centerline of Beach Lane, Township Road 629, the following 6 courses:

1. thence, with a curve to the left, the curve data for which is: D = 05° 32' 34", R = 264.87', L = 25.62', Ch. B. N. 86° 24' 26" W., Ch. L. 25.61' to a point;
2. thence, N. 89° 10' 43" W. a distance of 92.76' to a point;
3. thence, with a curve to the left, the curve data for which is: D = 31° 45' 18", R = 210.95', L = 116.91', Ch. B. S. 74° 56' 38" W., Ch. L. 115.42' to a point;
4. thence, S. 59° 03' 59" W. a distance of 55.00' to a point;
5. thence, S. 56° 31' 35" W. a distance of 230.47' to a point;
6. thence, with a curve to the left, the curve data for which is: D = 34° 06' 37", R = 123.05', L = 73.26', Ch. B. S. 39° 28' 16" W., Ch. L. 72.18' to a point;

thence, through the property of David J. and Naomi Troyer, OR 2140-612, the following 2 courses:

1. thence, N. 88° 09' 53" W. a distance of 14.88' to a 5/8" rebar set;
2. thence, N. 88° 09' 53" W. a distance of 2241.12' to a 5/8" rebar set;

thence, with the property lines of Dorothy J. Baughman, OR 1097-102 and George Walter Frueh, OR 1129-559, the following 2 courses:

1. thence, N. 01° 35' 19" E. a distance of 810.33' to a 5/8" rebar found;
2. thence, N. 01° 35' 19" E. a distance of 1313.76' to a 5/8" rebar found;

thence, with the East/West 1/2 Section line of said section 25, S. 88° 13' 43" E. a distance of 760.00' to the TRUE POINT OF BEGINNING, containing 135.032 acres, more or less, including public road right-of-way and is subject to all easements, rights-of-way, or restrictions, whether recorded or implied.

Bearings are based on OR 2140-612 and are for angular calculations only.

All 5/8" rebars set are 30" long with plastic cap marked "AMD 8050".

APPROVED FOR CLOSURE

[Signature] 3/21/2008

EXEMPT FROM
PLANNING COMMISSION

[Signature] 3/21/2008

DESCRIPTION
APPROVED
By: *A.L. Swinburn*
3-21-2008 CLS

Pertinent Documents: Tax Map and all Deeds shown, SR C-23, Flood Plain panel #390425 0150 C

Surveys by: Charles W. Hunnell, Alan Donaker

Description and plat by Alan Donaker, Professional Surveyor, #8050, from a survey of the premises on March 12, in the year of our Lord Two Thousand Eight.

OFFICE COPY
3/14/08
NOT RECORDABLE

This property is subject to all easements, rights-of-way or restrictions, whether recorded or implied

ALAN DONAKER SURVEYING
 19849 TR 383
 Walhonding, OH 43843
 Telephone: (740) 327-7001
 Fax: (740) 327-6101

EXEMPT FROM
 PLANNING COMMISSION

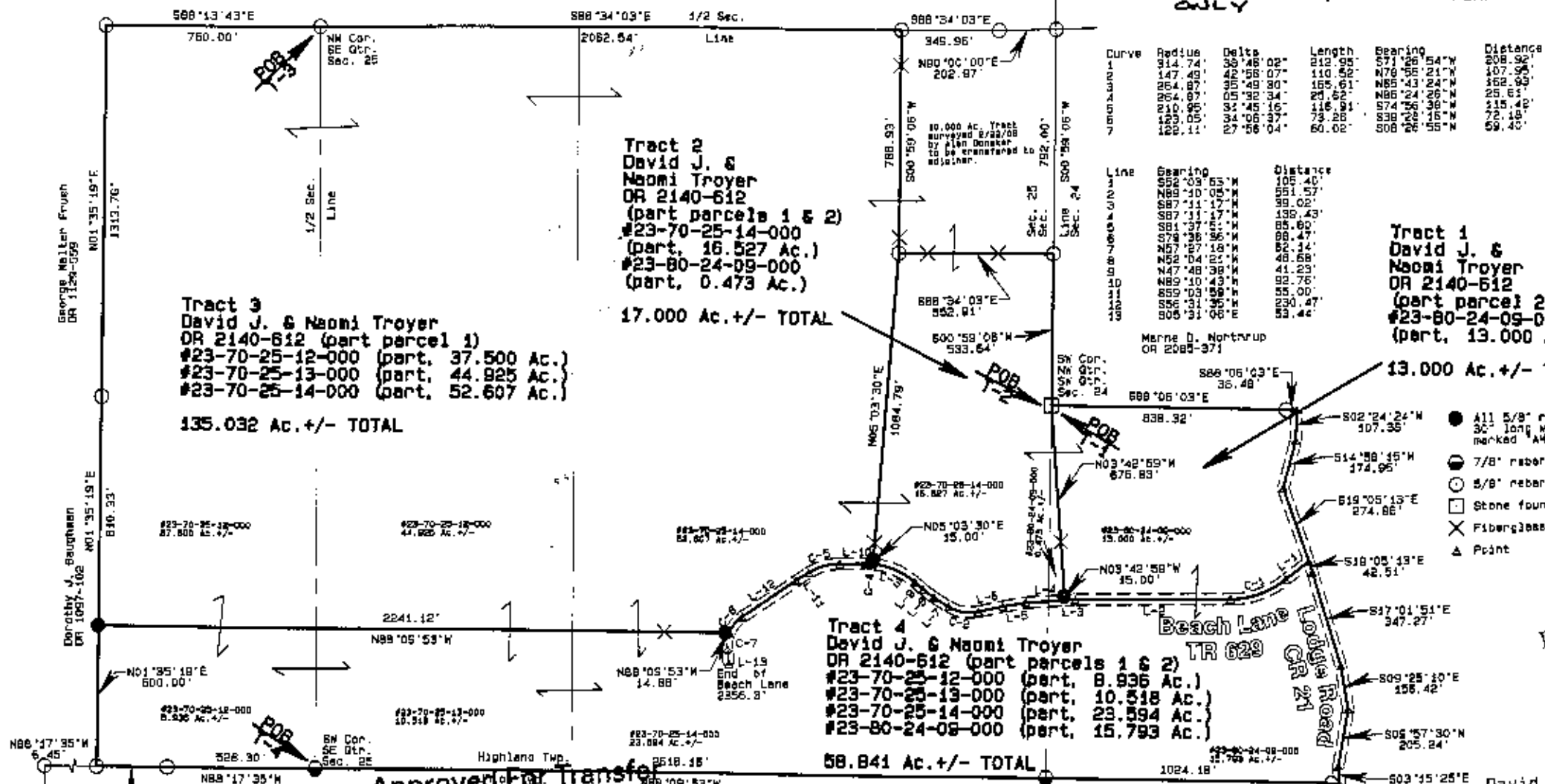
Alan Donaker
 TRACT 3 ONLY 5/2/08

Pertinent Documents: Tax Map
 All Deeds shown, SR C-23

Surveys by: Charles W. Hunnell,
 Alan Donaker

Bearings are based on
 OR 2140-612 and are for
 angular calculations only

FIRM #3904250 150 C



Curve	Radius	Delta	Length	Bearing	Distance
	314.74'	35°48'09"	212.95'	S71°05'54"W	208.92'
	147.49'	46°48'07"	110.92'	N76°05'21"W	107.92'
	254.87'	25°48'30"	155.62'	N65°43'24"W	152.65'
	210.95'	34°45'16"	116.91'	N66°24'25"W	25.61'
	153.05'	34°05'37"	73.25'	S74°36'36"W	115.42'
	120.11'	27°05'04"	60.02'	S88°23'15"W	72.18'
				S08°25'55"W	59.42'

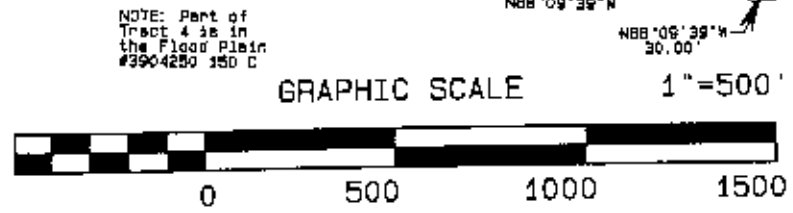
Line	Bearing	Distance
	S52°09'59"W	105.40'
	N85°10'00"W	95.15'
	S87°11'17"W	39.02'
	S87°11'17"W	138.43'
	S81°37'56"W	85.60'
	S78°38'36"W	85.47'
	S78°27'18"W	82.14'
	N82°04'02"W	45.58'
	N47°48'38"W	41.23'
	N89°10'43"W	92.76'
	S59°03'59"W	55.00'
	S56°31'35"W	230.47'
	S05°31'08"E	53.42'

Tract 1
 David J. & Naomi Troyer
 OR 2140-612
 (part parcel 2)
 #23-80-24-09-000
 (part, 13.000 Ac.)

- All 5/8" rebar set are 30" long with plastic cap marked "A40" 8050
- 7/8" rebar found
- 5/8" rebar found
- Stone found
- × Fiberglass rod set on line
- ▲ Point

Tract 4
 David J. & Naomi Troyer
 OR 2140-612 (part parcels 1 & 2)
 #23-70-25-12-000 (part, 8.936 Ac.)
 #23-70-25-13-000 (part, 10.518 Ac.)
 #23-70-25-14-000 (part, 23.594 Ac.)
 #23-80-24-09-000 (part, 15.793 Ac.)

Approved For Transfer
 No On-Lot Sewage
 Date 5/1/08
E. J. Smith
 Zanesville - Muskingum Co.
 Health Department



DESCRIPTION
 APPROVED
 By: *A. L. Swinehart*
 3.21.2008 *als*

David J. & Naomi Troyer
 OR 2140-612
 4 tracts
 SE Gtr. & SW Gtr. Sec. 25 &
 S.W. Gtr. Sec. 24,
 T2N, R5W
 United States Military Lands
 Highland Township
 Muskingum County, Ohio
 Date: March 12, 2008

OFFICE COPY
 NOT RECORDABLE

I, *Alan Donaker*, hereby certify that this is a true and correct copy of the original survey and to be correct to the best of my knowledge and belief.