

ALAN DONAKER SURVEYING

Alan Donaker, P.S.

19849 TR 383

Walhonding, OH 43843

Phone: (740) 327-7001

Fax: (740) 327-6101

TRACT 4

Being 58.841 acres, more or less, 43.048 acres in the Southeast Quarter of Section 25 and 15.793 acres in the Southwest Quarter of Section 24, Third Quarter, Township 2 North, Range 5 West, United States Military Lands, in the Township of Highland, in the County of Muskingum, in the State of Ohio, conveyed to David J. and Naomi Troyer, OR 2140-612 (part, parcel 1), Parcel No. 23-70-25-14-000 (part, 23.594 acres), and Parcel No. 23-70-25-13-000 (part, 10.518 acres), Parcel No. 23-70-25-12-000 (part, 8.936 acres) and Parcel No. 23-80-24-09-000 (part, 15.793 acres) and more particularly described as follows:

Commencing at a 7/8" rebar found at the Southwest corner of the Southeast Quarter of Section 25, said rebar being the TRUE POINT OF BEGINNING;

thence, with the Highland/Union Township Line, the following 2 courses:

1. thence, N. 88° 17' 35" W. a distance of 528.30' to a 5/8" rebar found;
2. thence, N. 88° 17' 35" W. a distance of 253.63' to a 5/8" rebar found;

thence, with the property lines of Dorothy J. Baughman, OR 1097-102 and George Walter Fruch, OR 1129-559, N. 01° 35' 19" E. a distance of 500.00' to a 5/8" rebar set;

thence, through the property of David J. and Naomi Troyer, OR 2140-612, the following 2 courses:

1. thence, S. 88° 09' 53" E. a distance of 2241.12' to a 5/8" rebar set;
2. thence, S. 88° 09' 53" E. a distance of 14.88' to a point in the centerline of Beach Lane, Township Road 629;

thence, with the centerline of Beach Lane, Township Road 629, the following 18 courses:

1. thence, with a curve to the right, the curve data for which is: D = 34° 06' 37", R = 123.05', L = 73.26', Ch. B. N. 39° 28' 16" E., Ch. L. 72.18' to a point;
2. thence, N. 56° 31' 35" E. a distance of 230.47' to a point;
3. thence, N. 59° 03' 59" E. a distance of 55.00' to a point;
4. thence, with a curve to the right, the curve data for which is: D = 31° 45' 18", R = 210.95', L = 116.91', Ch. B. N. 74° 56' 38" E., Ch. L. 115.42' to a point;
5. thence, S. 89° 10' 43" E. a distance of 92.76' to a point;
6. thence, with a curve to the right, the curve data for which is: D = 05° 32' 34", R = 264.87', L = 25.62', Ch. B. S. 86° 24' 26" E., Ch. L. 25.61' to a point;
7. thence, with a curve to the right, the curve data for which is: D = 35° 49' 30", R = 264.87', L = 165.61', Ch. B. S. 65° 43' 24" E., Ch. L. 162.93' to a point;
8. thence, S. 47° 48' 39" E. a distance of 41.23' to a point;
9. thence, S. 52° 04' 21" E. a distance of 46.68' to a point;
10. thence, S. 57° 27' 18" E. a distance of 62.14' to a point;
11. thence, with a curve to the left, the curve data for which is: D = 42° 56' 07", R = 147.49', L = 110.52', Ch. B. S. 78° 55' 21" E., Ch. L. 107.95' to a point;
12. thence, N. 79° 36' 36" E. a distance of 88.47' to a point;
13. thence, N. 81° 37' 51" E. a distance of 85.80' to a point;
14. thence, N. 87° 11' 17" E. a distance of 139.43' to a point;
15. thence, N. 87° 11' 17" E. a distance of 39.02' to a point;
16. thence, S. 89° 10' 05" E. a distance of 551.57' to a point;
17. thence, with a curve to the left, the curve data for which is: D = 38° 46' 02", R = 314.74', L = 212.95', Ch. B. N. 71° 26' 54" E., Ch. L. 208.92' to a point;
18. thence, N. 52° 03' 53" E. a distance of 105.40' to a point;

thence, with the centerline of Lodge Road County Road 21, the following 5 courses:

1. thence, S. 19° 05' 13" E. a distance of 42.51' to a point;
2. thence, S. 17° 01' 51" E. a distance of 347.27' to a point;
3. thence, S. 09° 25' 10" E. a distance of 156.42' to a point;
4. thence, S. 09° 57' 30" W. a distance of 205.24' to a point;
5. thence, S. 03° 15' 25" E. a distance of 60.98' to a point;

thence, with the Highland/Union Township Line, the following 3 courses:

1. thence, N. 88° 09' 39" W. a distance of 30.00' to a 5/8" rebar found;
2. thence, N. 88° 09' 39" W. a distance of 1024.18' to a 7/8" rebar found;
3. thence, N. 88° 09' 53" W. a distance of 2616.16' to the TRUE POINT OF BEGINNING, containing 58.841 acres, more or less, including public road right-of-way and is subject to all easements, rights-of-way, or restrictions, whether recorded or implied.

Bearings are based on OR 2140-612 and are for angular calculations only.

All 5/8" rebars set are 30" long with plastic cap marked "AMD 8050".

Pertinent Documents: Tax Map and all Deeds shown, SR C-23, Flood Plain panel #390425 0150 C (Part of this tract lies within the flood plain.)

Surveys by: Charles W. Hunnell, Alan Donaker

Description and plat by Alan Donaker, Professional Surveyor, #8050, from a survey of the premises on March 12, in the year of our Lord Two Thousand Eight.

OFFICE COPY 3/12/08
NOT RECORDABLE

APPROVED FOR CLOSURE

A. D. 3/24/08

EXEMPT FROM
 PLANNING COMMISSION

A. D. 3/24/08

DESCRIPTION
 APPROVED
 By: *A.C. Swinehart*
 3-21-2008 *ALS*

This property is subject to all easements, rights-of-way or restrictions, whether recorded or implied

ALAN DONAKER SURVEYING
 19849 TR 383
 Walhonding, OH 43843
 Telephone: (740) 327-7001
 Fax: (740) 327-6101

EXEMPT FROM
 PLANNING COMMISSION

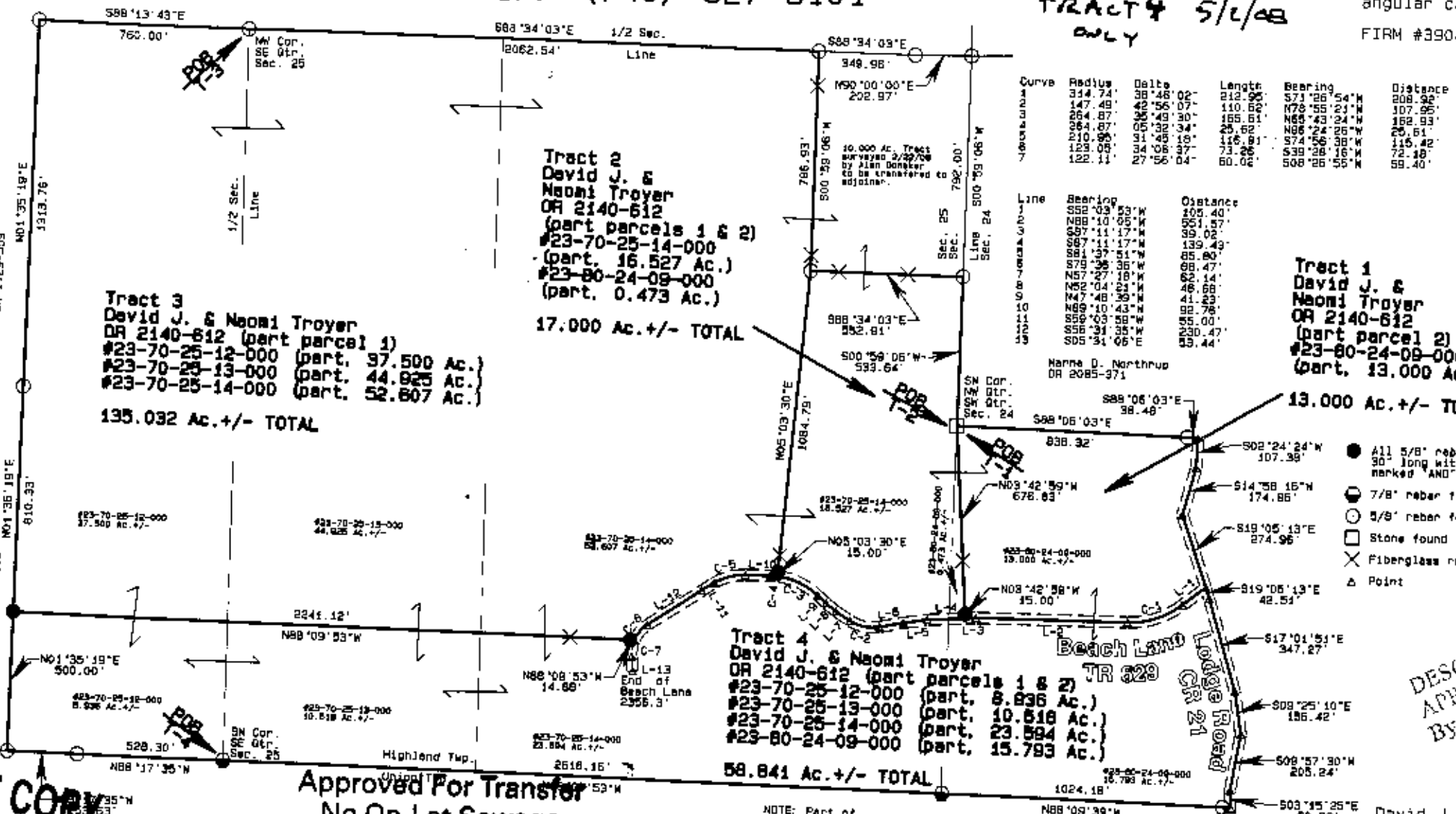
Alan Donaker
 TRACT 4 5/1/08
 ONLY

Pertinent Documents: Tax Map
 All Deeds shown, SR C-23

Surveys by: Charles W. Hunnell,
 Alan Donaker

Bearings are based on
 GR 2140-612 and are for
 angular calculations only

FIRM #3904250 150 C



OFFICE COPY NOT RECORDABLE
 I, Alan Donaker, Surveyor, hereby certify this plat to represent the boundary survey pursuant to Chapter 4739.37 Ohio Administrative Code and to be correct to the best of my knowledge and belief.

Approved For Transfer
 No On-Lot Sewage
 Date 5/1/08
E.L.S.
 Zanesville - Muskingum Co.
 Health Department

NOTE: Part of Tract 4 is in the Flood Plain #3904250 150 C

DESCRIPTION APPROVED
 BY: *A.L. Smith*
 3-21-2008 as

David J. & Naomi Troyer
 OR 2140-612
 4 tracts
 SE Qtr. & SW Qtr. Sec. 25 & S.W. Qtr Sec. 24, T2N, R5W
 United States Military Lands
 Highland Township
 Muskingum County, Ohio
 Date: March 12, 2008