

ALAN DONAKER SURVEYING

Alan Donaker, P.S.

19849 TR 383

Walhonding, OH 43843

Phone: (740) 327-7001

Fax: (740) 327-6101

TRACT 2

Being 17.000 acres, more or less, 16.527 acres in the Southeast Quarter of Section 25, 0.473 acres and in the Southwest Quarter of Section 24, Third Quarter, Township 2 North, Range 5 West, United States Military Lands, in the Township of Highland, in the County of Muskingum, in the State of Ohio, conveyed to David J. and Naomi Troyer, OR 2140-612 (part, parcels 1 and 2), Parcel No. 23-70-25-14-000 (part, 16.527 acres), and Parcel No. 23-80-24-09-000 (part, 0.473 acres), and more particularly described as follows:

Commencing at a stone found at the Southwest corner of the Northwest Quarter of the Southwest of Section 24, said stone being the TRUE POINT OF BEGINNING;

thence, through the property of David J. and Naomi Troyer, OR 2140-612, the following 2 courses:

1. thence, S. 03° 42' 59" E. a distance of 676.83' to a 5/8" rebar set;
2. thence, S. 03° 42' 59" E. a distance of 15.00' to a point in the centerline of Beach Lane, Township Road 629;

thence, with the centerline of Beach Lane, Township Road 629, the following 8 courses:

1. thence, S. 87° 11' 17" W. a distance of 139.43' to a point;
2. thence, S. 81° 37' 51" W. a distance of 85.80' to a point;
3. thence, S. 79° 36' 36" W. a distance of 88.47' to a point;
4. thence, with a curve to the right, the curve data for which is: D = 42° 56' 07", R = 147.49', L = 110.52', Ch. B. N. 78° 55' 21" W., Ch. L. 107.95' to a point;
5. thence, N. 57° 27' 18" W. a distance of 62.14' to a point;
6. thence, N. 52° 04' 21" W. a distance of 46.68' to a point;
7. thence, N. 47° 48' 39" W. a distance of 41.23' to a point;
8. thence, with a curve to the left, the curve data for which is: D = 35° 49' 30", R = 264.87', L = 165.61', Ch. B. N. 65° 43' 24" W., Ch. L. 162.93' to a point;

thence, through the property of David J. and Naomi Troyer, OR 2140-612, the following 2 courses:

1. thence, N. 05° 03' 30" E. a distance of 15.00' to a 5/8" rebar set;
2. thence, N. 05° 03' 30" E. a distance of 1084.79' to a 5/8" rebar found;

thence, through the property of David J. and Naomi Troyer, OR 2140-612, and with the South line of a 10.000 acre tract, S. 88° 34' 03" E. a distance of 552.91' to a 5/8" rebar found;

thence, with the property line of Marne D. Northrup, OR 2085-371, S. 00° 59' 06" W. a distance of 533.64' to the TRUE POINT OF BEGINNING, containing 17.000 acres, more or less, including public road right-of-way and is subject to all easements, rights-of-way, or restrictions, whether recorded or implied.

Bearings are based on OR 2140-612 and are for angular calculations only.

All 5/8" rebars set are 30" long with plastic cap marked "AMD 8050".

Pertinent Documents: Tax Map and all Deeds shown, SR C-23, Flood Plain panel #390425 0150 C

Surveys by: Charles W. Hunnell, Alan Donaker

Description and plat by Alan Donaker, Professional Surveyor, #8050, from a survey of the premises on March 12, in the year of our Lord Two Thousand Eight.

**OFFICE COPY
NOT RECORDABLE**

DESCRIPTION

APPROVED
By: *[Signature]* 2/21/2008

This property is subject to all easements, rights-of-way or restrictions, whether recorded or implied

ALAN DONAKER SURVEYING
 19849 TR 383
 Walhonding, OH 43843
 Telephone: (740) 327-7001
 Fax: (740) 327-6101

EXEMPT FROM
 PLANNING COMMISSION

Alan Donaker
 TRACTS ONLY 5/2/08

Pertinent Documents: Tax Map
 All Deeds shown, SR C-23

Surveys by: Charles W. Hunnell,
 Alan Donaker

Bearings are based on
 DR 2140-612 and are for
 angular calculations only

FIRM #3904250 150 C



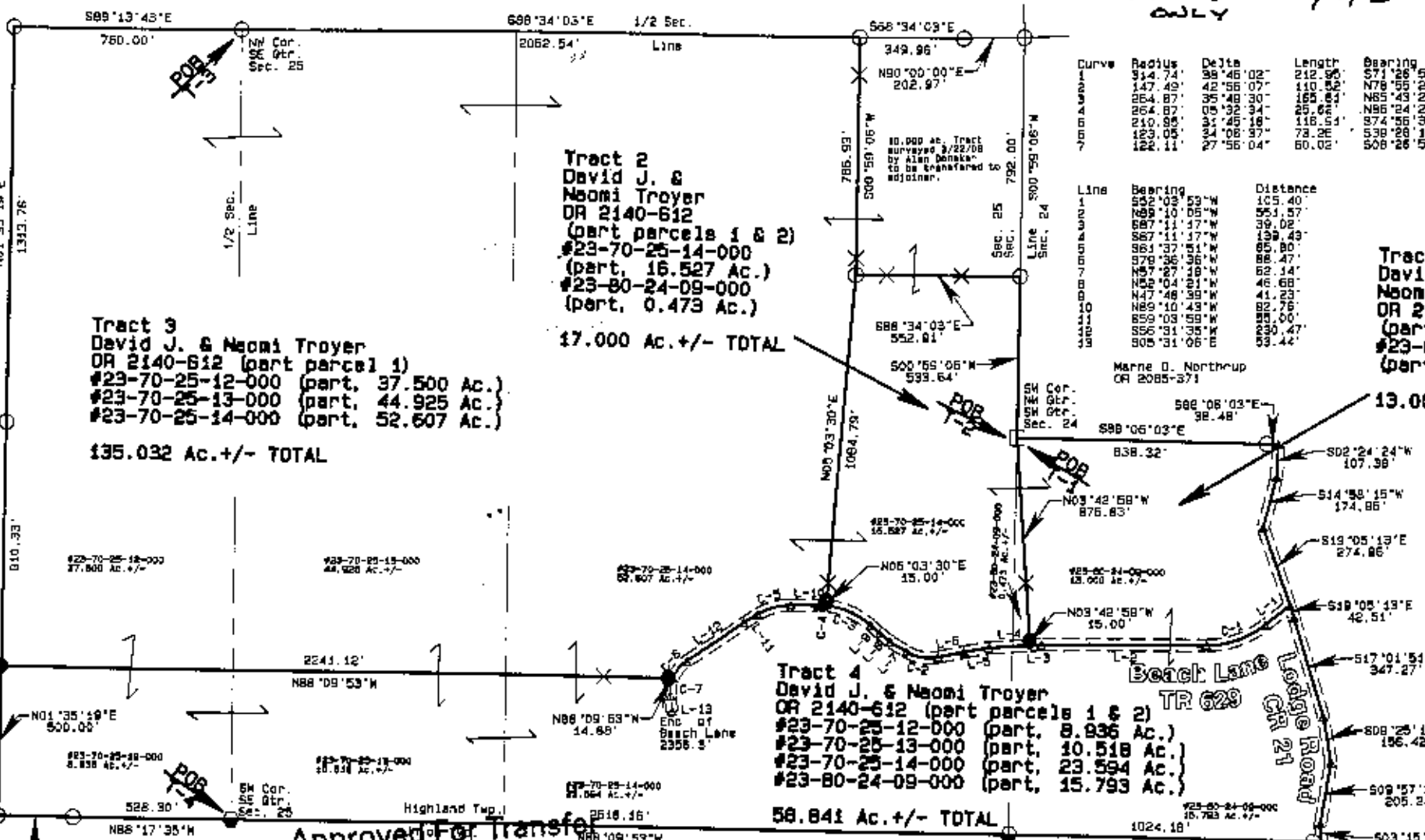
Curve	Radius	Delta	Length	Bearing	Distance
	914.74'	98°46'02"	212.95'	S71°26'54"W	208.92'
	147.49'	42°58'07"	110.55'	N78°55'21"W	107.92'
	254.87'	42°58'07"	169.64'	N85°43'24"W	162.93'
	254.87'	42°58'07"	169.64'	N86°24'12"W	162.93'
	210.95'	42°58'07"	118.64'	S74°55'18"W	115.42'
	122.11'	42°58'07"	78.24'	S59°28'05"W	75.18'
			60.00'	S50°28'05"W	59.40'

Line	Bearing	Distance
552°03'53"	105.40'	
269°10'05"	553.57'	
88°11'17"	39.08'	
88°11'17"	199.43'	
89°10'05"	39.08'	
97°28'36"	488.40'	
N89°04'18"	422.12'	
N89°04'18"	44.68'	
N89°10'43"	392.76'	
S50°03'58"	00.00'	
S50°31'35"	390.47'	
S05°31'06"	33.44'	

Tract 1
 David J. & Naomi Troyer
 OR 2140-612
 (part parcel 2)
 #23-80-24-09-000
 (part, 13.000 Ac.)

13.000 Ac. +/- TOTAL

- All 5/8" rebar set are 30" long with plastic cap marked "AND" #D50
- 7/8" rebar found
- 5/8" rebar found
- Stone found
- × Fiberglass rod set on line
- △ Point



Tract 3
 David J. & Naomi Troyer
 OR 2140-612 (part parcel 1)
 #23-70-25-12-000 (part, 37.500 Ac.)
 #23-70-25-13-000 (part, 44.925 Ac.)
 #23-70-25-14-000 (part, 52.607 Ac.)
 135.032 Ac. +/- TOTAL

Tract 2
 David J. & Naomi Troyer
 OR 2140-612
 (part parcels 1 & 2)
 #23-70-25-14-000 (part, 16.527 Ac.)
 #23-80-24-09-000 (part, 0.473 Ac.)
 17.000 Ac. +/- TOTAL

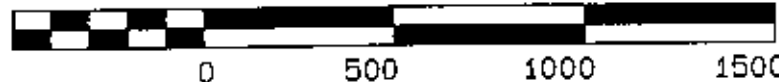
Tract 4
 David J. & Naomi Troyer
 OR 2140-612 (part parcels 1 & 2)
 #23-70-25-12-000 (part, 8.936 Ac.)
 #23-70-25-13-000 (part, 10.518 Ac.)
 #23-70-25-14-000 (part, 23.594 Ac.)
 #23-80-24-09-000 (part, 15.793 Ac.)
 58.841 Ac. +/- TOTAL

OFFICE COPY
NOT RECORDABLE

Approved For Transfer
 No On-Lot Sewage
 Date 5/1/08
E.L.S.M.
 Zanesville - Muskingum Co.
 Health Department

NOTE: Part of Tract 4 is in the Flood Plain #3904250 150 C

GRAPHIC SCALE 1"=500'



DESCRIPTION APPROVED
 By: *A.L. Swinehart*
 3-21-2008 *ALS*

David J. & Naomi Troyer
 OR 2140-612
 4 tracts
 SE Qtr. & SW Qtr. Sec. 25 & S.W. Qtr. Sec. 24, T2N, R5W
 United States Military Lands
 Highland Township
 Muskingum County, Ohio
 Date: March 12, 2008