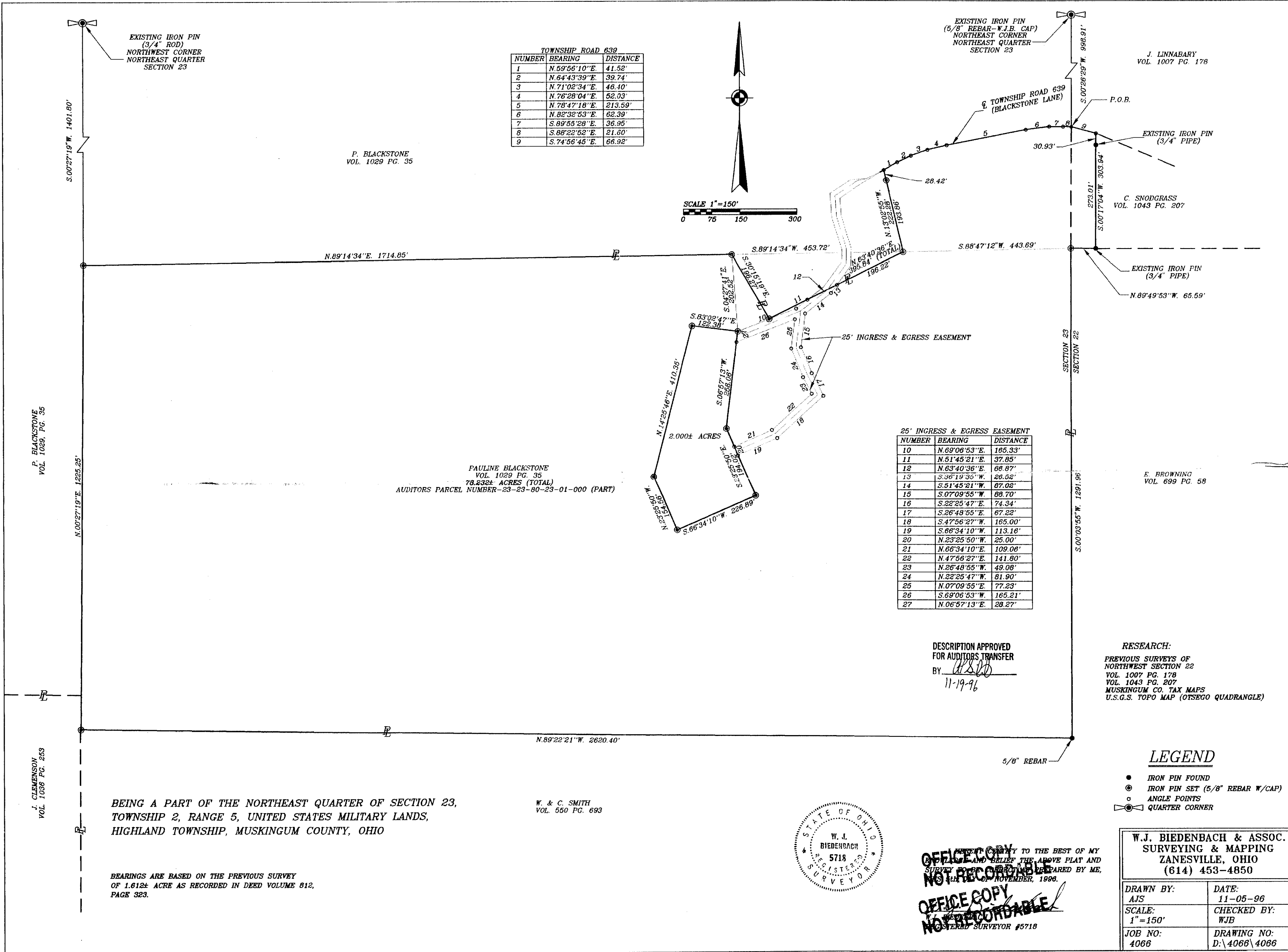
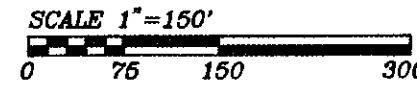


TOWNSHIP ROAD 639		
NUMBER	BEARING	DISTANCE
1	N. 59°56'10"E	41.52'
2	N. 64°43'39"E	39.74'
3	N. 71°02'34"E	46.40'
4	N. 76°28'04"E	52.03'
5	N. 78°47'18"E	213.59'
6	N. 82°32'53"E	62.39'
7	S. 89°55'28"E	36.95'
8	S. 88°22'52"E	21.60'
9	S. 74°56'45"E	66.92'



25' INGRESS & EGRESS EASEMENT		
NUMBER	BEARING	DISTANCE
10	N. 69°08'53"E	185.33'
11	N. 51°45'21"E	37.85'
12	N. 63°40'36"E	66.87'
13	S. 36°19'35"W	26.52'
14	S. 51°45'21"W	87.02'
15	S. 07°09'55"W	88.70'
16	S. 22°25'47"E	74.34'
17	S. 26°48'55"E	67.22'
18	S. 47°56'27"W	165.00'
19	S. 66°34'10"W	113.18'
20	N. 23°25'50"W	25.00'
21	N. 66°34'10"E	109.06'
22	N. 47°56'27"E	141.80'
23	N. 26°48'55"W	49.08'
24	N. 22°25'47"W	81.90'
25	N. 07°09'55"E	77.23'
26	S. 69°06'53"W	165.21'
27	N. 06°57'13"E	28.27'

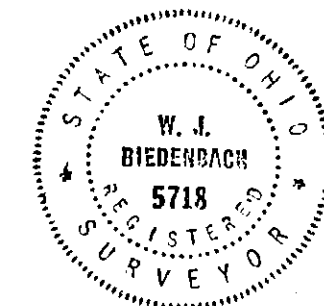
PAULINE BLACKSTONE  
VOL. 1029 PG. 35  
78.232± ACRES (TOTAL)  
AUDITORS PARCEL NUMBER-23-23-80-23-01-000 (PART)

DESCRIPTION APPROVED  
FOR AUDITORS TRANSFER  
BY: *[Signature]*  
11-19-96

RESEARCH:  
PREVIOUS SURVEYS OF  
NORTHWEST SECTION 22  
VOL. 1007 PG. 178  
VOL. 1043 PG. 207  
MUSKINGUM CO. TAX MAPS  
U.S.G.S. TOPO MAP (OTSEGO QUADRANGLE)

**LEGEND**

- IRON PIN FOUND
- ⊙ IRON PIN SET (5/8" REBAR W/CAP)
- ANGLE POINTS
- ⊠ QUARTER CORNER



OFFICE COPY  
NOT RECORDED  
OFFICE COPY  
NOT RECORDED  
REGISTERED SURVEYOR #5718

W.J. BIEDENBACH & ASSOC.  
SURVEYING & MAPPING  
ZANESVILLE, OHIO  
(614) 453-4850

DRAWN BY: AJS	DATE: 11-05-96
SCALE: 1"=150'	CHECKED BY: WJB
JOB NO: 4066	DRAWING NO: D:\4066\4066

BEING A PART OF THE NORTHEAST QUARTER OF SECTION 23,  
TOWNSHIP 2, RANGE 5, UNITED STATES MILITARY LANDS,  
HIGHLAND TOWNSHIP, MUSKINGUM COUNTY, OHIO

BEARINGS ARE BASED ON THE PREVIOUS SURVEY  
OF 1.612± ACRE AS RECORDED IN DEED VOLUME 812,  
PAGE 323.

W. & C. SMITH  
VOL. 550 PG. 693

P. BLACKSTONE  
VOL. 1029 PG. 35

J. CLEMENSON  
VOL. 1036 PG. 253

J. LINNABARY  
VOL. 1007 PG. 178

C. SNODGRASS  
VOL. 1043 PG. 207

F. BROWNING  
VOL. 699 PG. 58