

ALAN DONAKER SURVEYING

Alan Donaker, P.S.

19849 TR 383

Walhonding, OH 43843

Phone: (740) 327-7001

Fax: (740) 327-6101

TRACT 4

Being 58.841 acres, more or less, 43.048 acres in the Southeast Quarter of Section 25 and 15.793 acres in the Southwest Quarter of Section 24, Third Quarter, Township 2 North, Range 5 West, United States Military Lands, in the Township of Highland, in the County of Muskingum, in the State of Ohio, conveyed to David J. and Naomi Troyer, OR 2140-612 (part, parcel 1), Parcel No. 23-70-25-14-000 (part, 23.594 acres), and Parcel No. 23-70-25-13-000 (part, 10.518 acres), Parcel No. 23-70-25-12-000 (part, 8.936 acres) and Parcel No. 23-80-24-09-000 (part, 15.793 acres) and more particularly described as follows:

Commencing at a 7/8" rebar found at the Southwest corner of the Southeast Quarter of Section 25, said rebar being the TRUE POINT OF BEGINNING;

thence, with the Highland/Union Township Line, the following 2 courses:

1. thence, N. 88° 17' 35" W. a distance of 528.30' to a 5/8" rebar found;
2. thence, N. 88° 17' 35" W. a distance of 253.63' to a 5/8" rebar found;

thence, with the property lines of Dorothy J. Baughman, OR 1097-102 and George Walter Fruch, OR 1129-559, N. 01° 35' 19" E. a distance of 500.00' to a 5/8" rebar set;

thence, through the property of David J. and Naomi Troyer, OR 2140-612, the following 2 courses:

1. thence, S. 88° 09' 53" E. a distance of 2241.12' to a 5/8" rebar set;
2. thence, S. 88° 09' 53" E. a distance of 14.88' to a point in the centerline of Beach Lane, Township Road 629;

thence, with the centerline of Beach Lane, Township Road 629, the following 18 courses:

1. thence, with a curve to the right, the curve data for which is: D = 34° 06' 37", R = 123.05', L = 73.26', Ch. B. N. 39° 28' 16" E., Ch. L. 72.18' to a point;
2. thence, N. 56° 31' 35" E. a distance of 230.47' to a point;
3. thence, N. 59° 03' 59" E. a distance of 55.00' to a point;
4. thence, with a curve to the right, the curve data for which is: D = 31° 45' 18", R = 210.95', L = 116.91', Ch. B. N. 74° 56' 38" E., Ch. L. 115.42' to a point;
5. thence, S. 89° 10' 43" E. a distance of 92.76' to a point;
6. thence, with a curve to the right, the curve data for which is: D = 05° 32' 34", R = 264.87', L = 25.62', Ch. B. S. 86° 24' 26" E., Ch. L. 25.61' to a point;
7. thence, with a curve to the right, the curve data for which is: D = 35° 49' 30", R = 264.87', L = 165.61', Ch. B. S. 65° 43' 24" E., Ch. L. 162.93' to a point;
8. thence, S. 47° 48' 39" E. a distance of 41.23' to a point;
9. thence, S. 52° 04' 21" E. a distance of 46.68' to a point;
10. thence, S. 57° 27' 18" E. a distance of 62.14' to a point;
11. thence, with a curve to the left, the curve data for which is: D = 42° 56' 07", R = 147.49', L = 110.52', Ch. B. S. 78° 55' 21" E., Ch. L. 107.95' to a point;
12. thence, N. 79° 36' 36" E. a distance of 88.47' to a point;
13. thence, N. 81° 37' 51" E. a distance of 85.80' to a point;
14. thence, N. 87° 11' 17" E. a distance of 139.43' to a point;
15. thence, N. 87° 11' 17" E. a distance of 39.02' to a point;
16. thence, S. 89° 10' 05" E. a distance of 551.57' to a point;
17. thence, with a curve to the left, the curve data for which is: D = 38° 46' 02", R = 314.74', L = 212.95', Ch. B. N. 71° 26' 54" E., Ch. L. 208.92' to a point;
18. thence, N. 52° 03' 53" E. a distance of 105.40' to a point;

thence, with the centerline of Lodge Road County Road 21, the following 5 courses:

1. thence, S. 19° 05' 13" E. a distance of 42.51' to a point;
2. thence, S. 17° 01' 51" E. a distance of 347.27' to a point;
3. thence, S. 09° 25' 10" E. a distance of 156.42' to a point;
4. thence, S. 09° 57' 30" W. a distance of 205.24' to a point;
5. thence, S. 03° 15' 25" E. a distance of 60.98' to a point;

thence, with the Highland/Union Township Line, the following 3 courses:

1. thence, N. 88° 09' 39" W. a distance of 30.00' to a 5/8" rebar found;
2. thence, N. 88° 09' 39" W. a distance of 1024.18' to a 7/8" rebar found;
3. thence, N. 88° 09' 53" W. a distance of 2616.16' to the TRUE POINT OF BEGINNING, containing 58.841 acres, more or less, including public road right-of-way and is subject to all easements, rights-of-way, or restrictions, whether recorded or implied.

Bearings are based on OR 2140-612 and are for angular calculations only.

All 5/8" rebars set are 30" long with plastic cap marked "AMD 8050".

Pertinent Documents: Tax Map and all Deeds shown, SR C-23, Flood Plain panel #390425 0150 C (Part of this tract lies within the flood plain.)

Surveys by: Charles W. Hunnell, Alan Donaker

Description and plat by Alan Donaker, Professional Surveyor, #8050, from a survey of the premises on March 12, in the year of our Lord Two Thousand Eight.

OFFICE COPY 3/12/08
Alan Donaker
NOT RECORDABLE

APPROVED FOR CLOSURE

A. D. 3/21/08

EXEMPT FROM
 PLANNING COMMISSION

A. D. 3/21/08

DESCRIPTION
 APPROVED
 By: *A.C. Schwehart*
 3-21-2008 a.s

This property is subject to all easements, rights-of-way or restrictions, whether recorded or implied

ALAN DONAKER SURVEYING
 19849 TR 383
 Walhonding, OH 43843
 Telephone: (740) 327-7001
 Fax: (740) 327-6101

EXEMPT FROM
 PLANNING COMMISSION

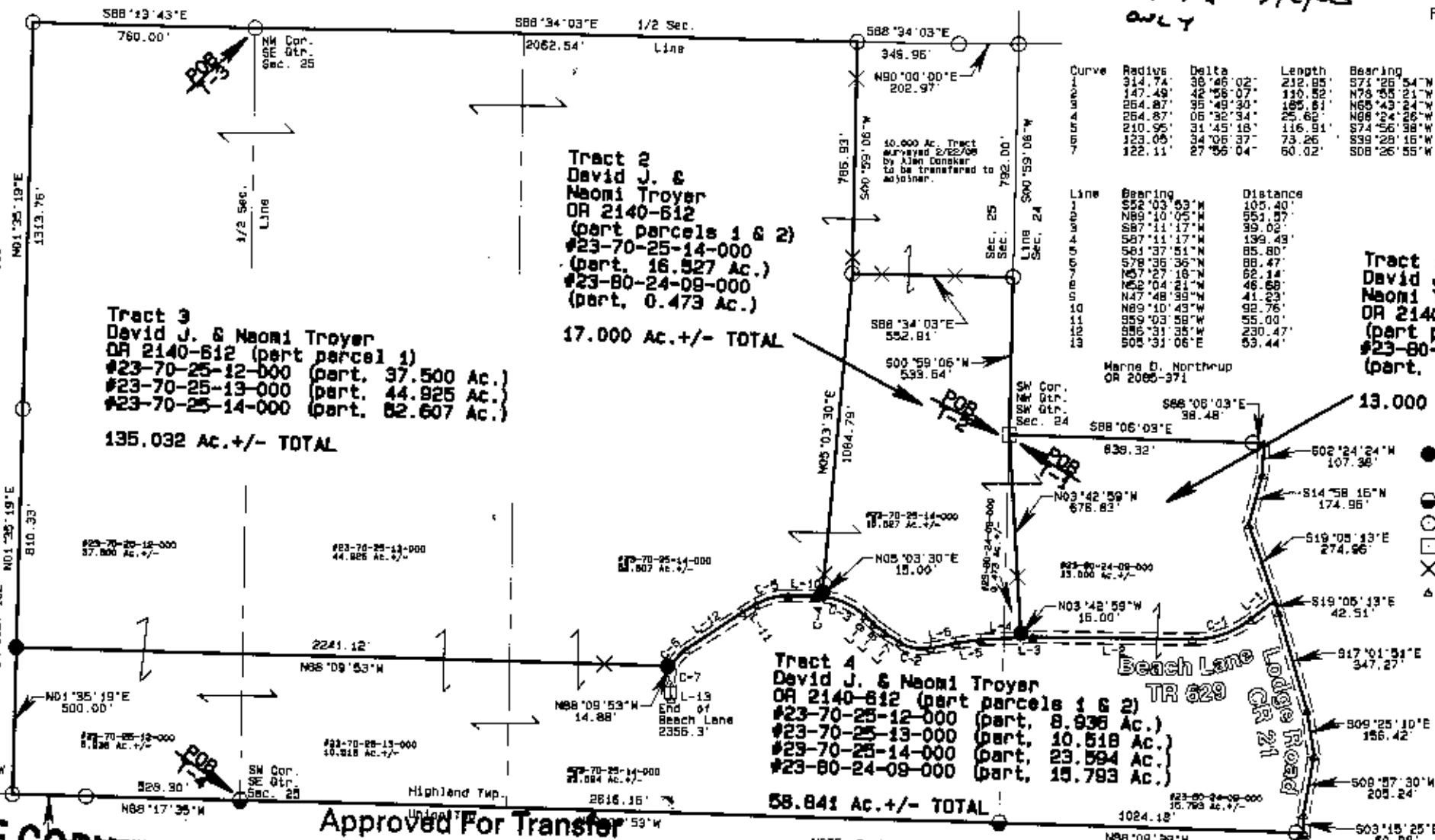
Alan Donaker
 TRACT 4 5/1/08
 ONLY

Pertinent Documents: Tax Map
 All Deeds shown, SH C-23

Surveys by: Charles W. Hunnell,
 Alan Donaker

Bearings are based on
 OR 2140-612 and are for
 angular calculations only

FIRM #3904250 150 C

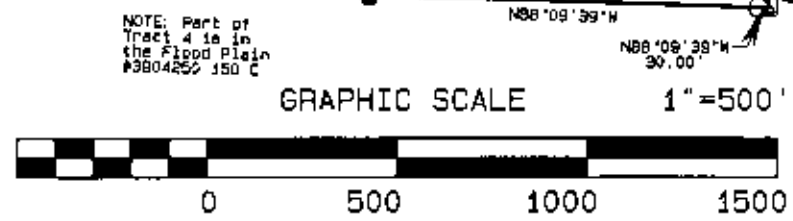


Curve	Radius	Delta	Length	Bearing	Distance
	314.74'	36°46'02"	212.85'	S71°26'54"W	208.82'
	147.49'	42°56'07"	110.52'	N78°55'21"W	107.85'
	264.87'	35°49'30"	185.61'	N65°43'24"W	162.93'
	264.87'	06°32'34"	25.60'	N88°24'26"W	25.61'
	210.95'	31°45'16"	116.91'	S74°56'38"W	115.42'
	123.09'	34°06'29"	73.26'	S39°28'16"W	72.38'
	122.11'	27°56'04"	60.32'	S08°26'55"W	59.40'

Line	Bearing	Distance
S52°03'53"W	105.40'	
N89°10'05"W	551.87'	
S87°11'17"W	39.00'	
S87°11'17"W	199.43'	
S81°37'51"W	85.80'	
S78°36'36"W	88.47'	
N57°27'18"W	52.14'	
N52°04'21"W	46.65'	
N47°48'35"W	41.23'	
N69°10'45"W	92.76'	
S89°03'58"W	55.00'	
S89°03'58"W	830.47'	
S04°31'06"E	53.44'	

OFFICE COPY
NOT RECORDABLE
 I, Alan Donaker, Surveyor hereby certify this plat to represent a true and correct boundary survey pursuant to Chapter 4733.37 Ohio Administrative Code and to be correct to the best of my knowledge and belief.

Approved For Transfer
 No On-Lot Sewage
 Date 5/1/08
E.L.S.
 Zanesville - Muskingum Co.
 Health Department



DESCRIPTION APPROVED
 By: *A.L. Swinehart*
 3-21-2008 as

David J. & Naomi Troyer
 OR 2140-612
 4 tracts
 SE Qtr. & SW Qtr. Sec. 25 & S.W. Qtr Sec. 24, T2N, R5W
 United States Military Lands
 Highland Township
 Muskingum County, Ohio
 Date: March 12, 2008