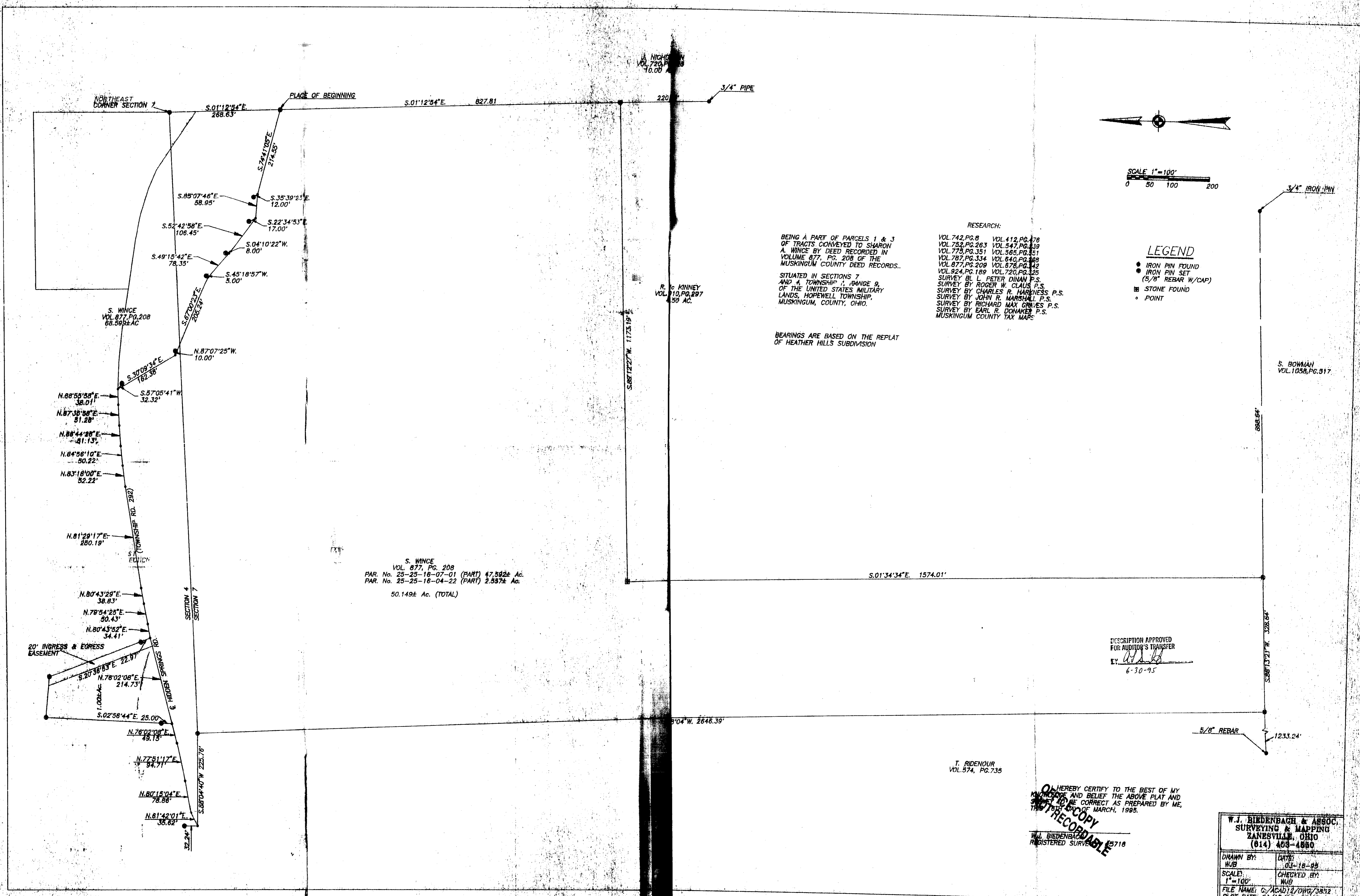


PS



SCALE 1"=100'
0 50 100 200

RESEARCH:
BEING A PART OF PARCELS 1 & 3 OF TRACTS CONVEYED TO SHARON A. WINCE BY DEED RECORDED IN VOLUME 877, PG. 208 OF THE MUSKINGUM COUNTY DEED RECORDS.

VOL. 742, PG. 8 VOL. 412, PG. 478
VOL. 752, PG. 263 VOL. 547, PG. 139
VOL. 775, PG. 351 VOL. 565, PG. 351
VOL. 787, PG. 334 VOL. 840, PG. 388
VOL. 877, PG. 208 VOL. 878, PG. 142
VOL. 924, PG. 189 VOL. 720, PG. 125
SURVEY BY PETER DINAN P.S.
SURVEY BY ROGER W. CLAUS P.S.
SURVEY BY CHARLES R. HARRNESS P.S.
SURVEY BY JOHN R. MARSHALL P.S.
SURVEY BY RICHARD MAX GRAVES P.S.
SURVEY BY EARL R. DONAKER P.S.
MUSKINGUM COUNTY TAX MAPS

LEGEND

- IRON PIN FOUND
- IRON PIN SET (5/8" REBAR W/CAP)
- STONE FOUND
- POINT

BEARINGS ARE BASED ON THE REPLAT OF HEATHER HILLS SUBDIVISION

S. WINCE
VOL. 877, PG. 208
PAR. No. 25-25-16-07-01 (PART) 47.592± AC.
PAR. No. 25-25-16-04-22 (PART) 2.887± AC.
50.149± AC. (TOTAL)

S.01'34'34"E. 1574.01'

DESCRIPTION APPROVED FOR AUDITOR'S TRANSFER
6-30-95

T. RIDENOUR
VOL. 574, PG. 735

HEREBY CERTIFY TO THE BEST OF MY KNOWLEDGE AND BELIEF THE ABOVE PLAT AND SURVEY TO BE CORRECT AS PREPARED BY ME, THIS 15th DAY OF MARCH, 1995.
NON-RECORDABLE COPY

W.J. BIEDENBACH & ASSOC. SURVEYING & MAPPING ZANESVILLE, OHIO (614) 463-4880	
DRAWN BY: WJB	DATE: 03-18-95
SCALE: 1"=100'	CHECKED BY: WJB
FILE NAME: C:\CAD12\DWG\3832	
PLOT DATE: 04/15/95	TRACT 4