

25-20-01-42

25-20-01-40

25-20-01-43

7670 PINECREST DR.

Being parts of Lots Number 13, 18, 19, and 23 of Quarter Township one, Township one, Range nine, United States Military Lands, Hopewell Township, Muskingum County, Ohio and being further described as follows:

Beginning at a point marked by an iron pin at the Southeast Corner of Lot number 18; thence South 00 degrees 19 minutes 14 seconds West 244.36 feet along the line between lots number 22 and 23 to a point in the center of County Road number 33, passing a point marked by an iron pin at 214.36 feet; thence following the center of the said County Road 33 the next five courses and distances:

- 1) North 41 degrees 17 minutes 45 seconds West 31.25 feet to a point;
- 2) North 47 degrees 18 minutes 19 seconds West 93.19 feet to a point;
- 3) North 50 degrees 27 minutes 42 seconds West 98.81 feet to a point;
- 4) North 01 degrees 28 minutes 48 seconds West 95.65 feet to a point;
- 5) North 70 degrees 20 minutes 51 seconds West 96.83 feet to a point;

thence leaving the said center of county road number 33 North 00 degrees 50 minutes 14 seconds West 17.71 feet to a point marked by an iron pin on the line between lot number 18 and 23; thence South 89 degrees 03 minutes 40 seconds West 796.57 feet along the said line between lots number 18 and 23 to a point marked by an iron pin; thence leaving the said line between lots number 18 and 23 North 00 degrees 04 minutes 17 seconds East 2022.25 feet to a point marked by an iron pin on the line between lots number 15 and 18; thence North 89 degrees 02 minutes 27 seconds East 279.25 feet along the said line between lots number 15 and number 18 to a point marked by an iron pin; thence leaving the said line between lots number 15 and number 18 North 00 degrees 00 minutes 24 seconds West 854.53 feet to a point marked by an iron pin; thence North 89 degrees 02 minutes 27 seconds East 877.62 feet to a point marked by an iron pin; thence South 00 degrees 00 minutes 24 seconds East 854.53 feet to a point marked by an iron pin, said point being the South East Corner of Lot number 13; thence North 89 degrees 02 minutes 27 seconds East 1354.59 feet along the line between lots number 12 and 19 to a point marked by an iron pin; thence leaving the said line between lots number 12 and number 19 South 00 degrees 01 minute 45 seconds East 855.54 feet to a point marked by an iron pin at the center of a gravel Road (now or formerly known as Township Road 289); thence following the center of the said gravel road (now or formerly known as Township Road 289) the next 21 courses and distances:

- 1) South 75 degrees 03 minutes 23 seconds West 64.85 feet to a point;
- 2) South 64 degrees 24 minutes 54 seconds West 32.00 feet to a point marked by an iron pin;
- 3) South 54 degrees 52 minutes 52 seconds West 58.99 feet to a point;
- 4) South 48 degrees 58 minutes 50 seconds West 204.62 feet to a point;
- 5) South 44 degrees 41 minutes 55 seconds West 187.10 feet to a point marked by an iron pin;
- 6) South 47 degrees 07 minutes 40 seconds West 41.14 feet to a point;
- 7) South 55 degrees 14 minutes 46 seconds West 47.18 feet to a point;
- 8) South 59 degrees 08 minutes 29 seconds West 139.76 feet to a point marked by an iron pin;
- 9) South 48 degrees 10 minutes 34 seconds West 67.73 feet to a point;
- 10) South 33 degrees 44 minutes 29 seconds West 49.96 feet to a point;
- 11) South 12 degrees 47 minutes 05 seconds West 75.24 feet to a point marked by an iron pin;
- 12) South 02 degrees 45 minutes 42 seconds West 144.94 feet to a point;
- 13) South 00 degrees 20 minutes 50 seconds West 353.13 feet to a point;
- 14) South 00 degrees 25 minutes 01 seconds West 186.38 feet to a point;

DESCRIPTION APPROVED
for Auditor's transfer
By D. M. [Signature] 6-8-11

- 15) South 14 degrees 12 minutes 27 seconds West 69.62 feet to a point marked by an iron pin;
- 16) South 36 degrees 45 minutes 27 seconds West 43.57 feet to a point;
- 17) South 45 degrees 54 minutes 35 seconds West 47.02 feet to a point;
- 18) South 51 degrees 34 minutes 39 seconds West 252.61 feet to a point marked by an iron pin;
- 19) South 60 degrees 42 minutes 55 seconds West 60.70 feet to a point;
- 20) South 65 degrees 04 minutes 40 seconds West 281.17 feet to a point;
- 21) South 57 degrees 02 minutes 30 seconds West 84.13 feet to a point, said point being on the line between lots number 18 and number 19, said point also being North 57 degrees 02 minutes 30 seconds east 21.50 feet from a point marked by an iron pin; thence leaving the said centerline of the gravel road South 00 degrees 19 minutes 14 seconds West 10.91 feet along the line between lots number 18 and number 19 to the place of beginning.

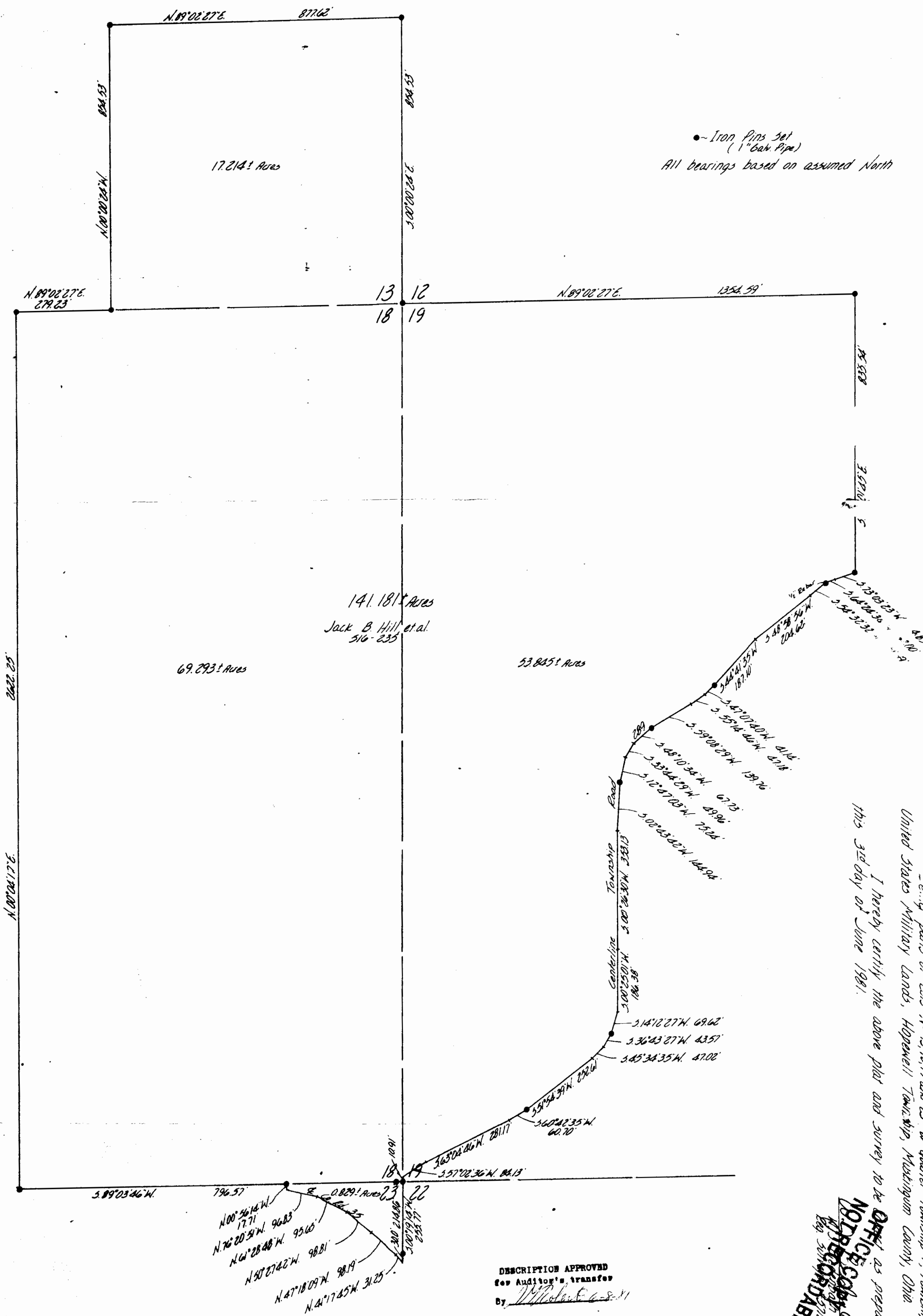
Containing 141.161 more or less acres, 17.214 more or less acres in lot number 15, 69.293 more or less acres in lot number 18, 57.345 more or less acres in lot number 19, 0.329 more or less acres in Lot number 23, subject to all legal road right-of-ways.

I hereby certify the above description to be correct as prepared by me, this 3rd day of June 1981.

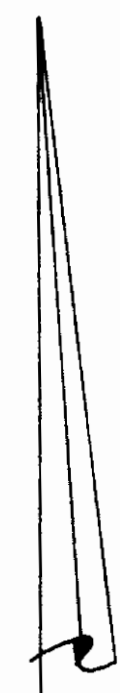
W. J. Biden
 W. J. BIDEN
 REGISTERED SURVEYOR #5718

**OFFICE COPY
 NOT RECORDABLE**

J. Hill



• Iron Pins set
(1" Galv Pipe)
All bearings based on assumed North



17.2141 Acres

141.181 Acres
Jack B. Hill et al
314-235

69.293 Acres

53.845 Acres

Being parts of Lots 1st, 3rd, 4th, 5th, 23rd of Quarter Township 1, Township 1, Range 9,
United States Military Lands, Hopewell Township, Washington County, Ohio
I hereby certify the above plat and survey to be
this 3rd day of June 1981.
Office of the Auditor
NOTICE TO THE PUBLIC
RECORDABLE

DESCRIPTION APPROVED
for Auditor's transfer
By *William C. ...*

Drawn by:	DATE:
Checked by:	DATE: