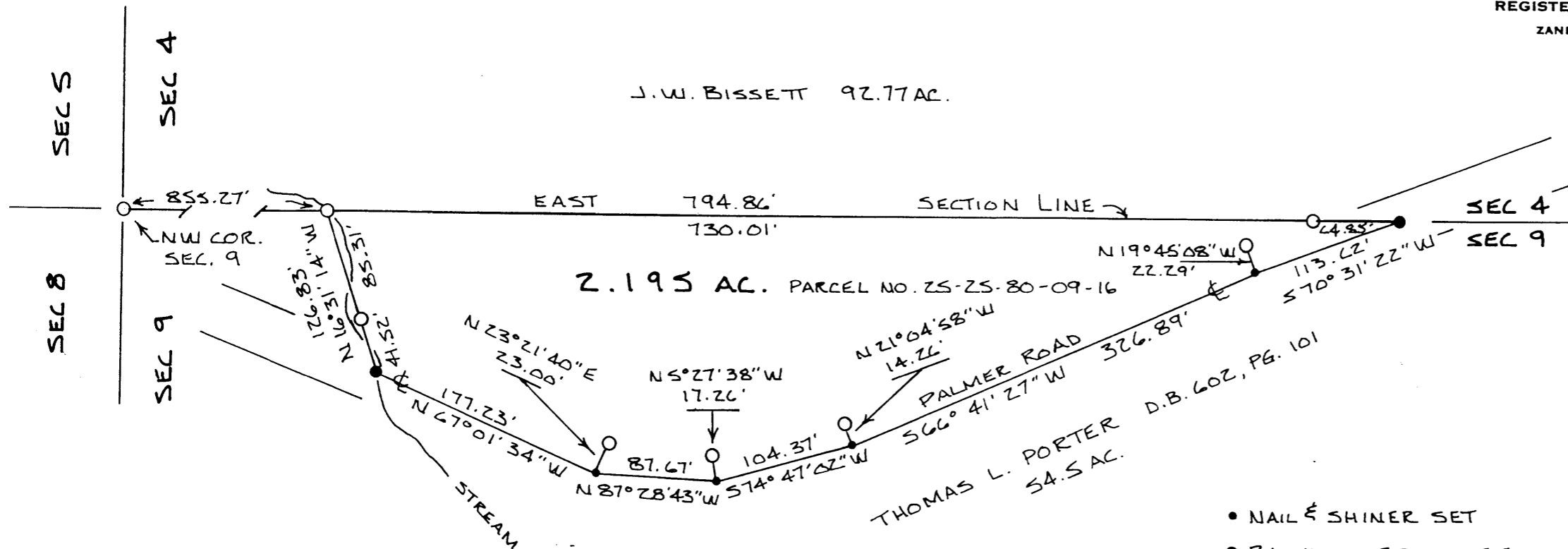


THOMAS L. ROBINSON
REGISTERED SURVEYOR
ZANESVILLE, OHIO

J.W. BISSETT 92.77 AC.



- NAIL & SHINER SET
- RAILROAD SPIKE SET
- IRON PIN SET 5/8" X 30" STEEL ROD

BASIS OF BEARINGS:
NORTH LINE S4.5 AC.
TRACT, 602-101

1 IN. = 100'

PLAT SHOWING SURVEY (FEB. 1978) OF
A 2.195 AC. TRACT.

BEING A PART OF THE NORTHWEST QTR.
OF SECTION 9, QTR. TWP. 2, TWP. 18,
RANGE 15, U.S. CONGRESS LANDS EAST
OF THE SCIOTO RIVER.

HOPEWELL TWP., MUSKINGUM CO., OHIO.

DESCRIPTION APPROVED
FOR AUDITOR'S TRANSFER

BY *T. L. Namble*
11-1-88

CORRECTED: DATE OCTOBER 24, 1988
ORIGINAL DATE FEBRUARY 14, 1978

OFFICE COPY
Thomas L. Robinson
REGISTERED PROFESSIONAL LAND SURVEYOR NO. S-6392