

25-80-17-31-001

ADDRESS N/A

# LANDMARK SURVEYS, INC.

**A DIVERSIFIED CORPORATION** Land Surveying - Land Sales - Land Development - Excavating  
727 Cambridge Road, Coshocton, Ohio 43812: e-donaker@usa.net (740) 623-0993 800-842-3264 fax : (740) 623-0997

J.I. DETWEILER ENTERPRISES, INC. 1,000 Acres <sup>31</sup> ID103856

This tract "NOT FOR DEVELOPMENT" and is to be conveyed with adjoining tract 2 only.

Being 1,000 acres, more or less (part of # 25-25-80-17-13-000) part of Tract 3, Harden Farm, Plat Book 17, pages 140-141, in the southwest quarter of section 17, of township 18 north, range 15 west, Congress Lands East of the Scioto River, in the township of Hopewell, in the county of Muskingum, in the State of Ohio, and more particularly described as follows:

Commencing at a 5/8" steel pin found at the southeast corner of Tract 2, Harden Farm, Plat Book 17, pages 140-141;

thence, along the line between Tracts 2 & 3, N.16°49'55"W. 218.15' to a 5/8" steel pin set, said 5/8" steel pin set being the TRUE POINT OF BEGINNING;

thence, continuing along the line between Tracts 2 & 3, N.16°49'55"W. 585.26' to a 5/8" steel pin found;

thence, through Tract 3, the following 2 courses:

1. thence, S.33°42'29"E. 512.77' to a 5/8" steel pin set;
2. thence, S.40°44'20"W. 176.36' to the TRUE POINT OF BEGINNING, containing 1,000 acres, more or less, and is subject to all easements, rights-of-way, or restrictions, whether recorded or implied.

Bearings are based on DB1161/267, N.89°30'59"W. and are for angular calculations only.

Pertinent documents: tax maps; deeds: 1161/267, 1545/432; plat book 17, pages 140-141; surveys by: Earl R. Donaker.

Prior deed: DB1161/267.

Description and plat by Landmark Surveys, Inc. Earl R. Donaker, Professional Surveyor, #7142, from a survey of the premises in the month of May, in the year of our LORD two thousand and one.

**OFFICE COPY  
NOT RECORDABLE**

DESCRIPTION APPROVED  
FOR AUDITOR'S SIGNATURE  
BY *[Signature]*

5-10-2001 Note per #

*"Remove not the old landmark" Proverbs 23:10*

727 Cambridge Road  
Coshocton, Ohio 43812  
THIS PROPERTY IS SUBJECT TO  
ALL EASEMENTS, RIGHTS-OF-WAY,  
OR RESTRICTIONS, WHETHER  
RECORDED OR IMPLIED.

# LANDMARK SURVEYS, INC.

EARL R. DONAKER, P.S.

J. J. DETWEILER  
ENTERPRISES, INC.

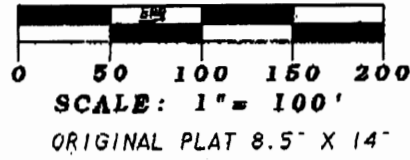
D.B. 1161, pg. 267

Harden Farm

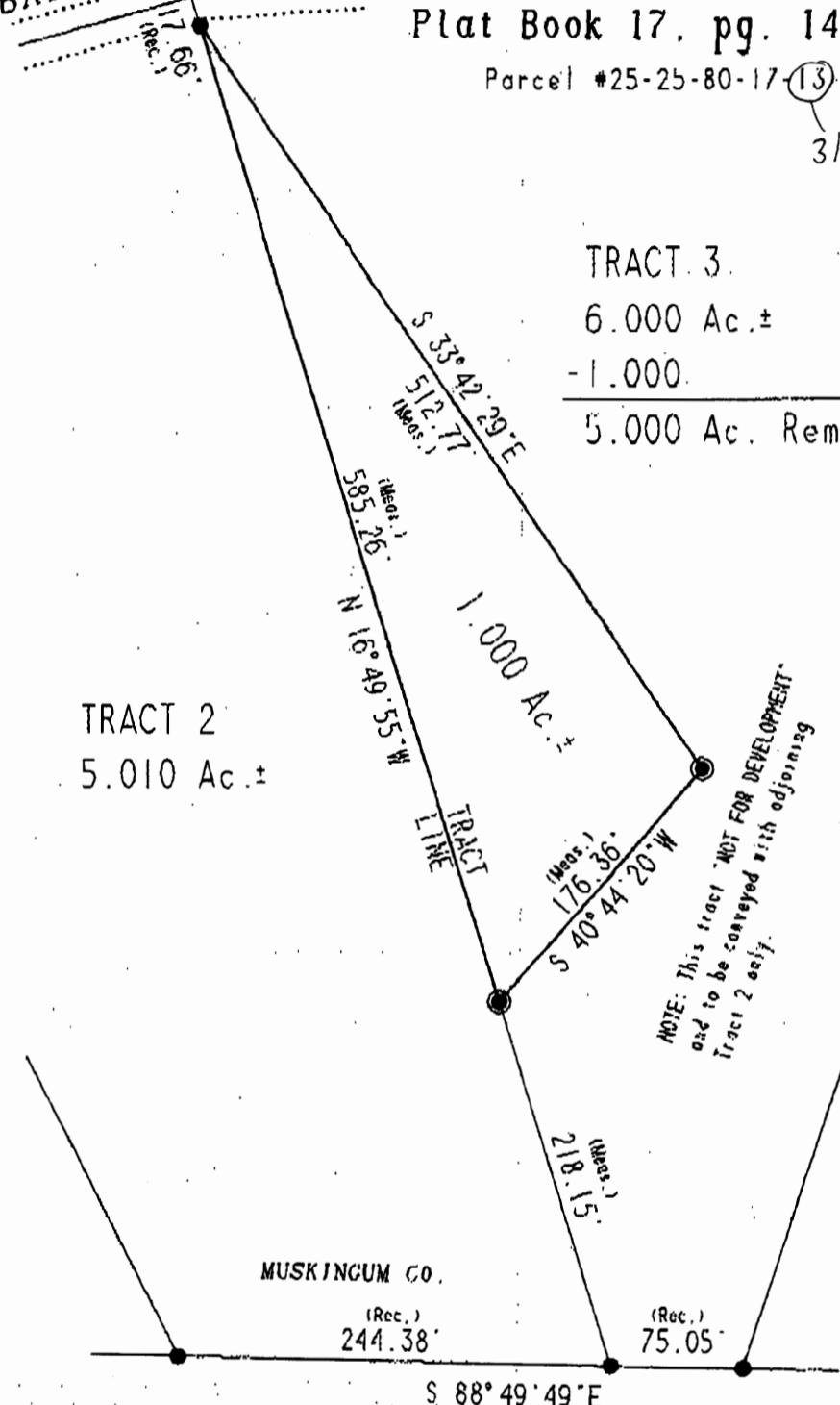
Plat Book 17, pg. 140-141

Parcel #25-25-80-17-13000

31



BAIRD ROAD TR 30



Bearings are based on DB161/267  
N. 89° 30' 55" W. and are for angular  
calculations only.

Pertinent documents: Tax maps:  
Deeds: 1161/267, 1545/432  
Plat Book 17, pg. 141-141  
Surveys by: Earl R. Donaker



PERRY CO.

- - All 5/8" steel pins set are 30" long, cap marked "ERD 7142"
- - 5/8" steel pin found

DEPOSITION APPROVED  
FOR RECORD'S TRANSFER  
BY *[Signature]*

5-10-2001 Note p# #

**OFFICE COPY  
NOT RECORDABLE.**

I, Earl R. Donaker, P.S., do hereby certify this plat to represent a boundary survey pursuant to Chapter 4733-37, Ohio Administrative Code, and to be correct to the best of my knowledge and belief.

"Remove not the old landmark." Proverbs 23:10

J. J. DETWEILER ENTERPRISES, INC.
ACRES: 1.000
SW 1/4, SECTION 17
T 18 N. R 15 W CONGRESS LANDS
EAST OF THE SCIOTO RIVER
TOWNSHIP: HOPEWELL
COUNTY: MUSKINGUM, OHIO
MAY, 2001 JD103856