

25-80-17-33
1100 BAIRD RD



LANDMARK SURVEYS, INC.

A DIVERSIFIED CORPORATION: Land Surveying - Land Sales - Land Development - Excavating
727 Cambridge Road, Coshocton, Ohio 43812; e-donaker@usa.net (740) 623-0993 800-842-3264 fax : (740) 623-0997

ACREAGE INVESTMENTS

4.533 Acres

JD1038AA

Being 4.533 acres, more or less (All of # 25-25-80-17-04-000) part of Tract 5, Harden Farm, Plat Book 17, pages 140-141, in the southwest quarter of section 17, of township 18 north, range 15 west, Congress Lands East of the Scioto River, in the township of Hopewell, in the county of Muskingum, in the State of Ohio, and more particularly described as follows:

Beginning at a stone found at the southeast corner of the southwest quarter of Section 17, said stone found being the TRUE POINT OF BEGINNING;

thence, through Tract 5, of the Harden Farm, Plat Book 17, pages 140-141, the following 3 courses:

1. thence, N.00°20'11"E. 297.44' to a 5/8" steel pin found;
2. thence, continuing N.00°20'11"E. 269.51' to a 5/8" steel pin found;
3. thence, continuing N.00°20'11"E. 14.90' to a point in TR 30, Baird Road;

thence, along TR 30, Baird Road, the following 12 courses:

1. thence, N.87°46'39"E. 102.56' to a point;
2. thence, S.88°45'14"E. 50.00' to a point;
3. thence, S.76°12'37"E. 50.00' to a point;
4. thence, S.56°56'28"E. 50.00' to a point;
5. thence, S.45°15'17"E. 47.62' to a point;
6. thence, S.35°22'02"E. 50.00' to a point;
7. thence, S.22°20'05"E. 50.00' to a point;
8. thence, S.13°16'46"E. 50.00' to a point;
9. thence, S.09°18'03"E. 65.57' to a point;
10. thence, S.05°19'15"E. 216.47' to a point;
11. thence, S.15°04'17"E. 42.71' to a point;
12. thence, S.39°41'09"E. 75.99' to a point;

thence, along the Muskingum/Perry County line the following 2 courses:

1. thence, N.89°30'59"W. 59.94' to a 5/8" steel pin found;
2. thence, continuing N.89°30'59"W. 369.97' to the TRUE POINT OF BEGINNING, containing 4.533 acres, more or less, including public road right-of-way and is subject to all easements, rights-of-way, or restrictions, whether recorded or implied.

Bearings are based on DB1161/267, N.89°30'59"W. and are for angular calculations only. All 5/8" steel pins set are 30" long with plastic cap marked "E.R.D. 7142".

Pertinent documents: tax maps; deeds: 1161/267 ; plat book 17, pages 140-141; surveys by: Earl R. Donaker.

Prior deed: Deed Book _____, page _____.

Description and plat by Landmark Surveys, Inc. Earl R. Donaker, Professional Surveyor, #7142, from a survey of the premises in the month of May, in the year of our LORD two thousand.

**OFFICE COPY
NOT RECORDABLE**

DESCRIPTION APPROVED
FOR AUDITOR'S TRANSFER
BY A.L. Swinchaet

5-31-2000 kb

727 Cambridge Road
Coshocton, Ohio 43812

THIS PROPERTY IS SUBJECT TO
ALL EASEMENTS, RIGHTS-OF-WAY,
OR RESTRICTIONS, WHETHER
RECORDED OR IMPLIED.

All bearings & distances are
of record, except as marked.

LANDMARK SURVEYS, INC.

EARL R. DONAKER, P.S.

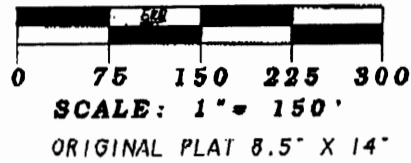
ACREAGE INVESTMENTS, INC.

Tract 5, Harden Farm

Plat Book 17, pg. 140-141

DB _____ pg. _____

tel: (740) 623-0993
1-800-842-3264



L 1	N 87° 46' 39" E	102.56'
L 2	S 88° 45' 14" E	50.00'
L 3	S 76° 12' 37" E	50.00'
L 4	S 56° 56' 28" E	50.00'
L 5	S 45° 15' 17" E	47.62'
L 6	S 35° 22' 02" E	50.00'
L 7	S 22° 20' 05" E	50.00'
L 8	S 13° 16' 46" E	50.00'
L 9	S 09° 18' 03" E	65.57'
L 10	S 05° 19' 15" E	216.47'
L 11	S 15° 04' 17" E	42.71'
L 12	S 39° 41' 09" E	75.99'

- - All 5/8" steel pins set are 30" long, plastic cap marked "ERD 7142"
- - 5/8" steel pin found
- - stone found
- ▲ - point

Pertinent documents: Tax maps:

Deeds: 1161/267

Plat Book 17, pg. 140-141

Surveys by: Earl R. Donaker

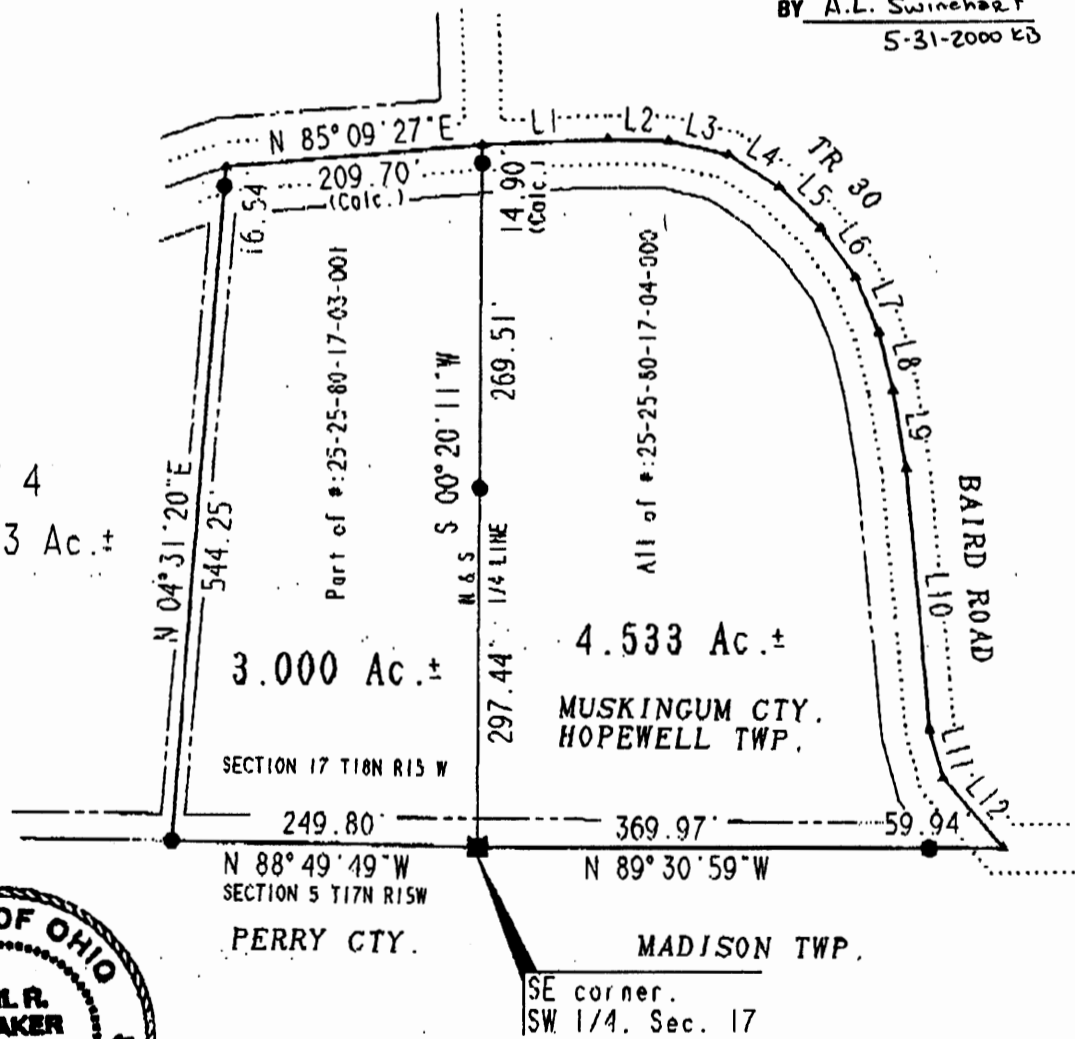


Bearings are based on DB161/267
N. 89°30'59"W. and are for angle
calculations only.

DESCRIPTION APPROVED
FOR AUDITOR'S TRANSFER
BY A.L. Swinehart

5-31-2000 ED

TRACT 4
10.663 Ac. ±



**OFFICE COPY
NOT RECORDABLE**

I, Earl R. Donaker, hereby
certify this plat to represent a boundary
survey pursuant to Chapter 4733-37, Ohio
Administrative Code, and to be correct to
the best of my knowledge and belief.

"Remove not the old landmark." Proverbs 23:10

ACREAGE INVESTMENTS, INC.
ACRES: 3.000 & 4.533
SW 1/4 & SE 1/4, SECTION 17
T 18 N.R 15 W CONGRESS LANDS
EAST OF THE SCIOTO RIVER
TOWNSHIP: HOPEWELL
COUNTY: MUSKINGUM, OHIO
MAY, 2000
JD1038AA