

**LANDMARK SURVEYS, INC.**

A DIVERSIFIED CORPORATION Land Surveying - Land Sales - Land Development - Excavating
727 Cambridge Road, Coshocton, Ohio 43812: e-donaker@usa.net (740) 623-0993 800-842-3264 fax: (740) 623-0997

GEORGE J. LEWIS 18.342 Acres GL105500

Being 18.342 acres, more or less (5.972 acres all of # 29-10-03-05-000 and 12.370 acres part of # 29-10-03-12-000) in the west half of section 3, in the first quarter of township 3 north, range 9 west, United States Military Lands, in the township of Jackson, in the county of Muskingum, in the State of Ohio, and more particularly described as follows:

Commencing at the northeast corner of the west half of section 3, thence, along the north & south quarterline, S.00°00'00"E. 2045.34' to a point;

thence, along the south line of a 25 acre tract of S.C. & M.B. Reiss, DB1088/448, the following 2 courses:

1. thence, N.88°15'00"W. 310.27' to a pin found;
2. thence, continuing N.88°15'00"W. 926.15' to a pin found, said pin found being the TRUE POINT OF BEGINNING;

thence, along the property line of P.N. II & L.A. Untied, DB1138/525 and S.C. & M.B. Reiss, DB975/79, S.25°32'02"E. 901.99' to a pin found;

thence, through the property of George J. Lewis, DB727/276 the following 2 courses:

1. thence, S.20°19'36"W. 114.11' to a 5/8" steel pin set;
2. thence, continuing S.20°19'36"W. 51.03' to a point in the centerline of the Wakatomika Creek;

thence, along the property line of P.H. Kilpatrick, DB994/51 and the centerline of the Wakatomika Creek the following 11 courses:

1. thence, N.82°05'48"W. 81.12' to a point;
2. thence, S.78°43'49"W. 127.98' to a point;
3. thence, S.79°59'22"W. 109.88' to a point;
4. thence, S.71°41'03"W. 96.54' to a point;
5. thence, S.66°47'08"W. 128.45' to a point;
6. thence, N.53°59'08"W. 147.69' to a point;
7. thence, N.70°52'07"W. 131.71' to a point;
8. thence, N.79°30'34"W. 96.93' to a point;
9. thence, S.80°51'07"W. 48.54' to a point;
10. thence, S.78°22'57"W. 96.60' to a point;
11. thence, S.83°03'55"W. 121.71' to a point;

thence, along the property line of R.C. & L. P. King, DB800/214 the following 3 courses:

1. thence, N.06°10'35"E. 64.72' to a 5/8" steel pin set;
2. thence, continuing N.06°10'35"E. 586.92' to a 5/8" steel pin set;
3. thence, continuing N.06°10'35"E. 19.41' to a point in the centerline of Ashcraft Road, TR93;

thence, along the property line of J.D. & T.J. Stepp, DB1139/836 the following 3 courses:

1. thence, along the centerline of Ashcraft Road, TR93, S.69°20'40"E. 367.45' to a point;
2. thence, N.18°43'22"E. 25.32' to a pin found;
3. thence, continuing N.18°43'22"E. 481.12' to a pin found;

thence, along the property line of R.C. & L. P. King, DB800/214, S.88°15'00"E. 26.90' to a point;

thence, along the property line of S.C. & M.B. Reiss, DB1088/448, the following 2 courses:

1. thence, S.01°15'00"W. 33.66' to a pin found;
2. thence, S.88°15'00"E. 190.26' to the TRUE POINT OF BEGINNING, containing 18.342 acres, more or less, including public road right-of-way and is subject to all easements, rights-of-way, or restrictions, whether recorded or implied.

Bearings are based on DB1139/836 N.18°43'22"E. and are for angular calculations only. All 5/8" steel pins set are 30" long with plastic cap marked "E.R.D. 7142".

Pertinent documents: tax maps; deeds: 994/51, 1134/624, 1138/525, 975/79, 1088/448, 800/214, 1139/836; surveys by: Kenneth C. Varner, Malcolm A. Grove.

Prior deed: DB727/276.

Description and plat by Landmark Surveys, Inc. Earl R. Donaker, Professional Surveyor, #7142, from a survey of the premises in the month of April, in the year of our LORD two thousand.

**OFFICE COPY
NOT RECORDABLE**

DESCRIPTION APPROVED
FOR AUDITOR'S TRANSFER
BY A.L. Swinehart
4-12-2000 KB

"Remove not the old landmark" Proverbs 23:10

727 Cambridge Road
Coshocton, Ohio 43812

THIS PROPERTY IS SUBJECT TO
ALL EASEMENTS, RIGHTS-OF-WAY,
OR RESTRICTIONS, WHETHER
RECORDED OR IMPLIED.

LANDMARK SURVEYS, INC.

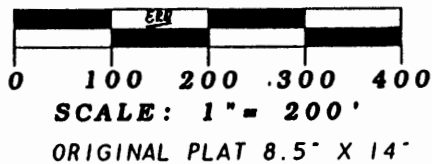
EARL R. DONAKER, P.S.

tel: (740) 623-0993
1-800-842-3264

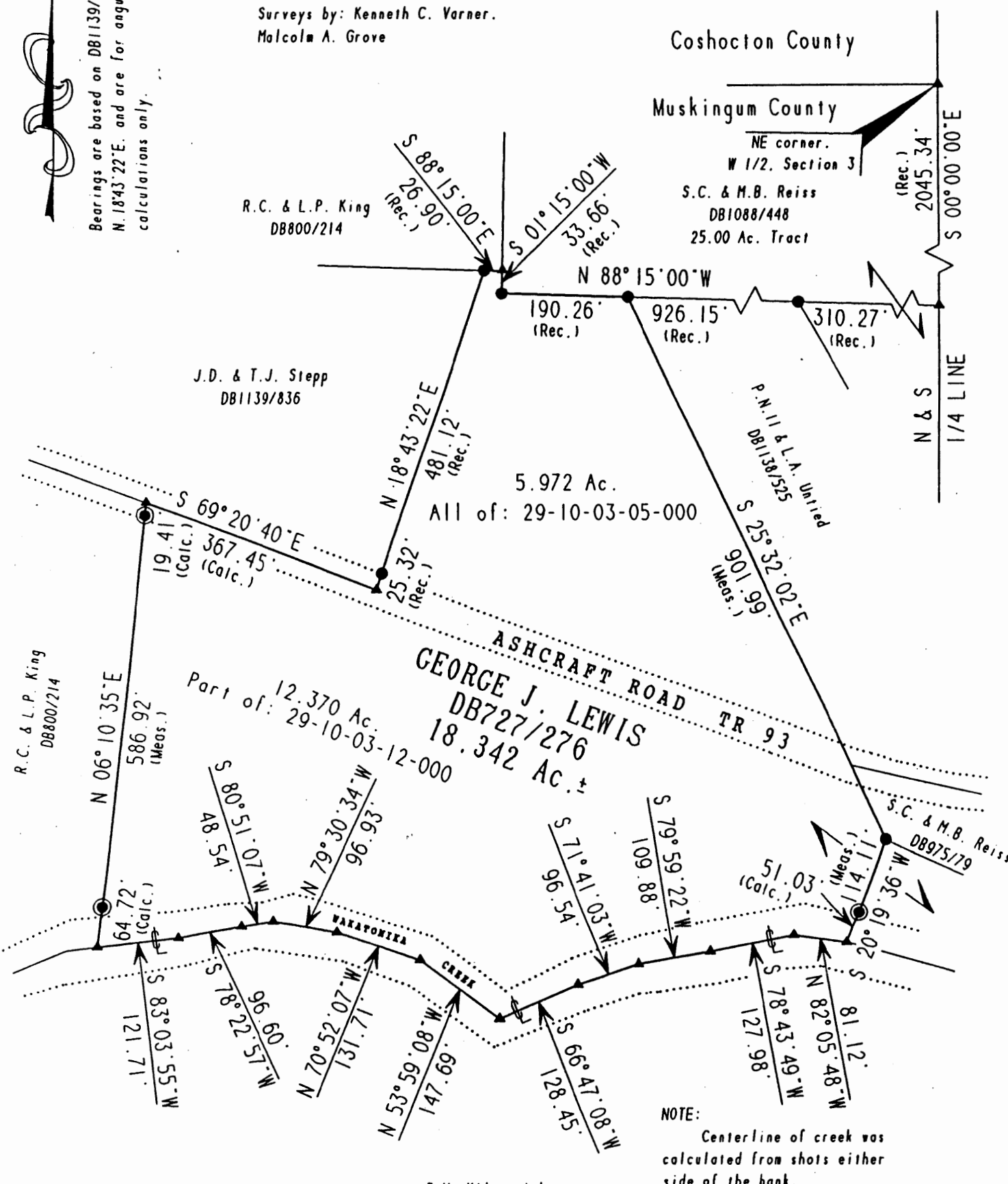
Pertinent documents: Tax maps:

Deeds: 994/51, 1134/624, 1138/525,
975/79, 1088/448, 800/214, 1139/836

Surveys by: Kenneth C. Varner,
Malcolm A. Grove



Bearings are based on DB1139/836
N. 18°43'22"E. and are for angular
calculations only.



NOTE:
Centerline of creek was
calculated from shots either
side of the bank.

P.H. Kilpatrick
DB994/51

DESCRIPTION APPROVED
FOR AUDITOR'S TRANSFER
BY R. L. Swinehart
4-12-2000 kh



Earl R. Donaker, Surveyor, hereby
certify this plat to represent a boundary
survey pursuant to Chapter 4733-37, Ohio
Administrative Code and to be correct to
the best of my knowledge and belief.

"Remove not the old landmark." Proverbs 23:10

GEORGE J. LEWIS	
ACRES: 18.342	
W. 1/2. SECTION 3	
FIRST QUARTER, T 3 N.R 9 W.	
UNITED STATES MILITARY LANDS	
TOWNSHIP: JACKSON	
COUNTY: MUSKINGUM, OHIO	
APRIL, 2000	GL105500