

727 Cambridge Road  
Coshocton, Ohio 43812



**LANDMARK SURVEYS**  
EARL R. DONAKER, P.S.

(614) 623-0993  
1-800-842-3264

J.J. DETWEILER ENTERPRISES, INC.  
TRACT 28: 5.512 Acres

Being 5.512 acres, more or less (0.696 acres part of parcel 29-10-07-20 in the southeast quarter of section 7) and (4.816 acres part of parcel 29-40-14-07 in the northeast quarter of section 14) in the second quarter of township 3 north, range 9 west, United States Military Lands, in the township of Jackson, in the county of Muskingum, in the State of Ohio, and more particularly described as follows:

Beginning at a stone found at the northwest corner of the northeast quarter of section 14, said stone found being the TRUE POINT OF BEGINNING;

thence, along the north & south quarterline of section 7, N.00°01'27"W. 570.80' to a 5/8" steel pin set;

thence, along the property line of Dale L. & Clara B. Fairall, 644-157, S.89°35'20"E. 1313.28' to a 5/8" rebar found;

thence, along the property line of Gary W. Dayton, 945-340, S.00°19'07"W. 100.00' to a 5/8" steel pin set;

thence, through the property of J.J. Detweiler Enterprises, Inc. 1115-238, the following 5 courses:

1. thence, S.85°56'56"W. 1285.25' to a 5/8" steel pin set;
2. thence, S.00°01'27"E. 200.00' to a 5/8" steel pin set;
3. thence, S.00°00'46"W. 200.42' to a 5/8" steel pin set;
4. thence, S.00°12'53"W. 945.88' to a 5/8" steel pin set;
5. thence, continuing S.00°12'53"W. 20.00' to a point in Dove Road, TR 318A;

thence, along the centerline of Dove Road, TR 318A, S.89°30'57"W. 30.36' to a point;

thence, along the north & south quarterline of section 14 the following 2 courses:

1. thence, N.00°12'10"E. 15.00' to a 5/8" steel pin set;
2. thence, continuing N.00°12'10"E. 980.97' to the TRUE POINT OF BEGINNING, containing 5.512 acres, more or less, including public road right-of-way and is subject to all easements, rights-of-way, or restrictions, whether recorded or implied.

**30' NON-EXCLUSIVE EASEMENT**

Reserving for the Grantor, Grantor's heirs and assigns a 30' non-exclusive easement for ingress, egress and regress to and from Dove Road, TR 318A to the above described tract, and more particularly described as follows:

Beginning at a stone found at the northwest corner of the northeast quarter of section 14, said stone found being the TRUE POINT OF BEGINNING OF THE EASEMENT;

thence, along the north & south quarterline of section 7, N.00°01'27"W. 370.80' to a point;

thence, through the property of J.J. Detweiler Enterprises, Inc. 1115-238, the following 5 courses:

1. thence, S.89°35'20"E. 30.57' to a 5/8" steel pin set;
2. thence, S.00°01'27"E. 200.00' to a 5/8" steel pin set;
3. thence, S.00°00'46"W. 200.42' to a 5/8" steel pin set;
4. thence, S.00°12'53"W. 945.88' to a 5/8" steel pin set;
5. thence, continuing S.00°12'53"W. 20.00' to a point in Dove Road, TR 318A;

thence, along the centerline of Dove Road, TR 318A, S.89°30'57"W. 30.36' to a point;

thence, along the north & south quarterline of section 14 the following 2 courses:

1. thence, N.00°12'10"E. 15.00' to a 5/8" steel pin set;
2. thence, continuing N.00°12'10"E. 980.97' to the TRUE POINT OF BEGINNING OF THE EASEMENT.

Bearings are assumed and are for angular calculations only. All 5/8" steel pins set are 30" long with plastic cap marked "E.R.D. 7142".

Pertinent documents: tax maps: 29-10, 29-40; deeds: 1068-548, 1087-201, 845-265, 963-199, 574-333, 820-99, 1027-349, 565-540, 970-345, 480-145, 979-254, 644-157, 979-248, 945-340, 1115-238; surveys by: Charles R. Harkness, Kenneth C. Varner.

Prior deed: 1115-238.

Description and plat by Landmark Surveys, Earl R. Donaker, Professional Surveyor, #7142, from a survey of the premises in the month of November, in the year of our Lord one thousand nine hundred and ninety-five.

**OFFICE COPY  
NOT RECORDABLE**

DESCRIPTION APPROVED  
FOR AUDITORS TRANSFER

BY

A handwritten signature in black ink, appearing to read "Earl R. Donaker", written over a horizontal line.  
4-16-96

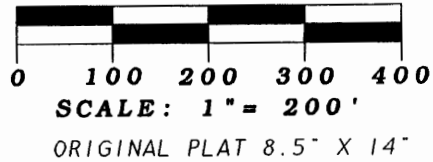
727 Cambridge Road  
Coshocton, Ohio 43812

**LANDMARK SURVEYS**  
EARL R. DONAKER, P.S.

tel: (614) 623-0993  
1-800-842-3264

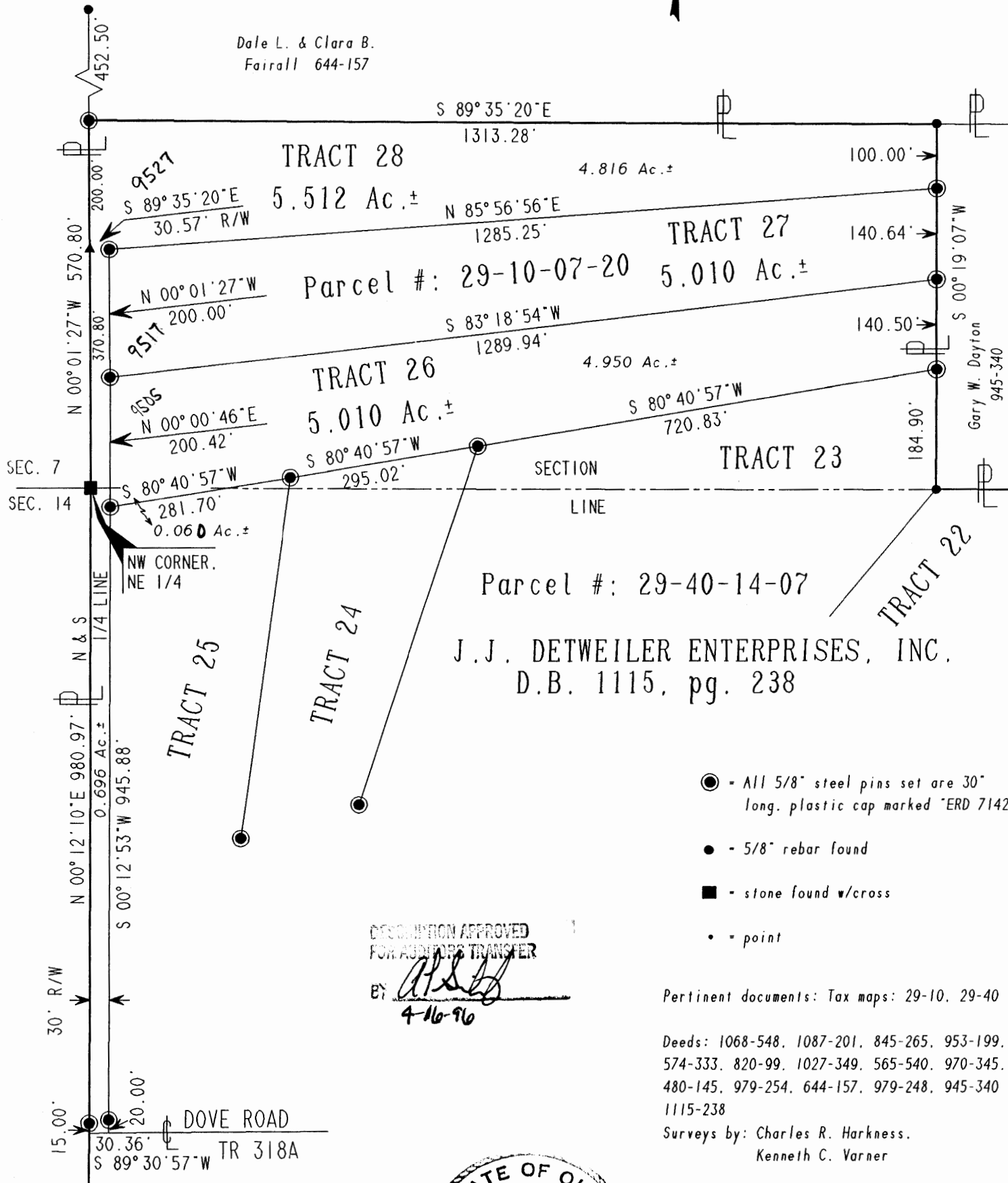
THIS PROPERTY IS SUBJECT TO  
ALL EASEMENTS, RIGHTS-OF-WAY,  
OR RESTRICTIONS, WHETHER  
RECORDED OR IMPLIED.

Bearings are assumed and are for  
angular calculations only.



NOTE: Bearings & distances (B&D)  
B&D between monumentation were measured.  
B&D to points were calculated.  
Record B&D as marked. (Rec)

Dale L. & Clara B.  
Fairall 644-157



Parcel #: 29-40-14-07  
J.J. DETWEILER ENTERPRISES, INC.  
D.B. 1115, pg. 238

- - All 5/8" steel pins set are 30" long. plastic cap marked "ERD 7142"
- - 5/8" rebar found
- - stone found w/cross
- - point

DESCRIPTION APPROVED  
FOR ADDITIONAL TRANSFER  
BY *[Signature]*  
4-16-96

Pertinent documents: Tax maps: 29-10, 29-40  
Deeds: 1068-548, 1087-201, 845-265, 953-199,  
574-333, 820-99, 1027-349, 565-540, 970-345,  
480-145, 979-254, 644-157, 979-248, 945-340  
1115-238  
Surveys by: Charles R. Harkness,  
Kenneth C. Varner



J. J. DETWEILER ENTERPRISES, INC.
TRACTS: 26, 27, 28
NE 1/4, SEC. 14, SE 1/4, SEC. 7
SECOND QUARTER, T 3 N. R 9 W.
UNITED STATES MILITARY LANDS
TOWNSHIP: JACKSON
COUNTY: MUSKINGUM, OHIO
DATE: NOVEMBER, 1995

**OFFICE COPY**  
**NOT RECORDABLE**

I, Earl R. Donaker, P. S. 7142, hereby  
certify this plat to represent a boundary  
survey pursuant to Chapter 4733-37, Ohio  
Administrative Code and to be correct to  
the best of my knowledge and belief.

"Remove not the old landmark." Proverbs 23: 10