

ALAN DONAKER SURVEYING

Alan Donaker, P.S.

19849 TR 383

Walhonding, OH 43843

Phone: (740) 327-7001

Fax: (740) 327-6101

Being 3.958 acres, more or less, in the Southwest Quarter of Section 19, in the Fourth Quarter, Township 3 North, Range 9 West, United States Military Lands, and in the Village of Frazeyburg, in the County of Muskingum, in the State of Ohio, conveyed to Grace Johnson, DR 970-345 (part of parcel 3), Parcel No. 29-59-06-02-000 (part), and more particularly described as follows:

Commencing at a point at the Southeast corner, of the Southwest Quarter, of Section 19, thence with Half Section line the following four courses:

1. thence, N. 00° 04' 33" W. a distance of 796.09' to a 5/8" rebar found;
2. thence, N. 00° 04' 33" W. a distance of 150.20' to a 5/8" rebar found;
3. thence, N. 00° 04' 33" W. a distance of 423.36' to a concrete post found;
4. thence, N. 00° 04' 33" W. a distance of 596.60' to a 5/8" steel pin set, said pin being the TRUE POINT OF BEGINNING;

thence, through the property of Grace Johnson, DR 970-345, the following three courses:

1. thence, S. 86° 08' 42" W. a distance of 20.0⁵ to a point on the west side of a 20' right-of-way;
2. thence, S. 86° 08' 42" W. a distance of 247.99' to a 5/8" steel pin set;
3. thence, N. 12° 44' 04" W. a distance of 508.62' to a 5/8" steel pin set;

thence, with the South line of Conrail the following two courses:

1. thence, N. 65° 02' 45" E. a distance of 395.62' to a point on the west side of a 20' right-of-way;
2. thence, N. 65° 02' 45" E. a distance of 20.10' to a point in the centerline of a 20' right-of-way;

thence, through the property of Grace Johnson, DR 970-345, and with the centerline of a 20' right-of-way, the following six courses:

1. thence, S. 35° 25' 14" W. a distance of 88.99' to a 5/8" steel pin set;
2. thence, S. 28° 54' 39" W. a distance of 67.32' to a 5/8" steel pin set;
3. thence, S. 05° 48' 21" W. a distance of 60.22' to a 5/8" steel pin set;
4. thence, S. 17° 35' 53" E. a distance of 45.25' to a 5/8" steel pin set;
5. thence, S. 38° 21' 52" E. a distance of 57.31' to a 5/8" steel pin set;
6. thence, S. 42° 22' 01" E. a distance of 64.05' to a 5/8" steel pin set;

thence, with the Half Section line, S. 00° 04' 33" E. a distance of 326.72' to the TRUE POINT OF BEGINNING, containing 3.958 acres, more or less, including public road right-of-way and is subject to all easements, rights-of-way, or restrictions, whether recorded or implied.

Also granting and reserving a 20' Right-of-way

Commencing at a point at the Southeast corner, of the Southwest Quarter, of Section 19, thence with Half Section line the following four courses:

1. thence, N. 00° 04' 33" W. a distance of 796.09' to a 5/8" rebar found;
2. thence, N. 00° 04' 33" W. a distance of 150.20' to a 5/8" rebar found;
3. thence, N. 00° 04' 33" W. a distance of 423.36' to a concrete post found;
4. thence, N. 00° 04' 33" W. a distance of 596.60' to a 5/8" steel pin set, said pin being the TRUE POINT OF BEGINNING;

thence, through the property of Grace Johnson, DR 970-345, the following eight courses:

1. thence, S. 86° 08' 42" W. a distance of 20.05' to a point;
2. thence, N. 00° 04' 33" W. a distance of 335.16' to a point;
3. thence, N. 42° 22' 01" W. a distance of 45.67' to a point, (5/8" steel pin set, N. 49° 38' 04" E. a distance of 10.01');;
4. thence, N. 38° 21' 52" W. a distance of 59.49' to a point, (5/8" steel pin set, N. 62° 01' 08" E. a distance of 10.17');;
5. thence, N. 17° 35' 53" W. a distance of 49.16' to a point, (5/8" steel pin set, N. 84° 06' 14" E. a distance of 10.21');;
6. thence, N. 05° 48' 21" E. a distance of 64.34' to a point, (5/8" steel pin set, S. 72° 38' 30" E. a distance of 10.21');;
7. thence, N. 28° 54' 39" E. a distance of 69.36' to a point, (5/8" steel pin set, S. 61° 05' 21" E. a distance of 10.00');;
8. thence, N. 35° 25' 14" E. a distance of 72.66' to a point, (5/8" rebar found, N. 65° 02' 45" E. a distance of 22.05');

thence, with the South line of Conrail the following two courses:

1. thence, N. 65° 02' 45" E. a distance of 20.10' to a point on the centerline of said 20' right-of-way;
2. thence, N. 65° 02' 45" E. a distance of 1.95' to 5/8" rebar found;

thence, with the Half Section line, S. 00° 04' 33" E. a distance of 15.45' to a point;

thence, through the property of Grace Johnson, DR 970-345, the following six courses:

1. thence, S. 35° 25' 14" W. a distance of 76.97' to a point, (5/8" rebar found, N. 61° 05' 21" W. a distance of 10.00');
2. thence, S. 28° 54' 39" W. a distance of 65.28' to a point, (5/8" steel pin set, N. 72° 38' 30" W. a distance of 10.21');

3. thence, S. 05° 48' 21" W. a distance of 56.10' to a point, (5/8" steel pin set, S. 84° 06' 14" W. a distance of 10.21');
4. thence, S. 17° 35' 53" E. a distance of 41.35' to a point, (5/8" steel pin set, S. 62° 01' 08" W. a distance of 10.17');
5. thence, S. 38° 21' 52" E. a distance of 55.13' to a point, (5/8" steel pin set, S. 49° 38' 04" W. a distance of 10.01');
6. thence, S. 42° 22' 01" E. a distance of 52.71' to a point;

thence, with the Half Section line, the following two courses:

1. thence, S. 00° 04' 33" E. a distance of 14.86' to a 5/8" steel pin set;
2. thence, S. 00° 04' 33" E. a distance of 326.72' to the TRUE POINT OF BEGINNING.

Bearings are based on the North/South Half Section line, S.00° 04' 33" E, and are for angular calculations only.

All 5/8" steel pins set are 30" long with plastic cap marked "AMD 8050".

Pertinent Documents: Tax Map

DR: 970-345, 514-305

Surveys by: Donald L. Graham

DESCRIPTION APPROVED
FOR AUDITOR'S TRANSFER

BY K. Buckley
6-24-2002

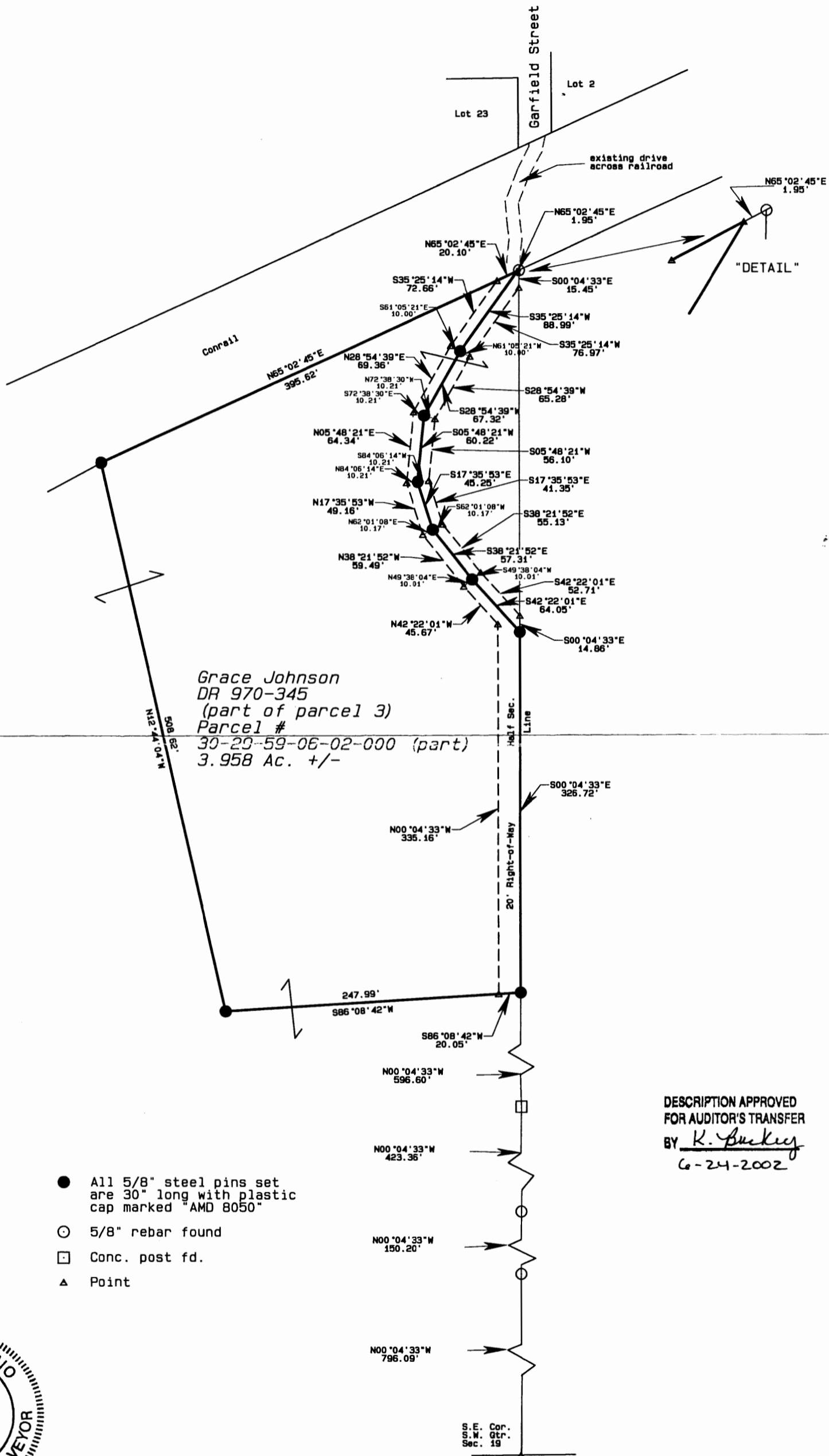
Description and plat by Alan Donaher, Professional Surveyor, #8050, from a survey of the premises in the month of June of the year of our Lord Two Thousand two.

**OFFICE COPY
NOT RECORDABLE**

This property is subject to all easements, rights-of-way or restrictions, whether recorded or implied.

ALAN DONAKER SURVEYING
 19849 TR 383
 Walhonding, OH 43843
 Telephone: (740) 327-7001
 Fax: (740) 327-6101

Pertinent Documents: Tax Map
 DR: 970-345, 514-305
 Surveys by: Donald L. Graham
 Bearings are based on the North/South Half Section Line S00°04'33"E and are for angular calculations only



Grace Johnson
 DR 970-345
 (part of parcel 3)
 Parcel #
 30-29-59-06-02-000 (part)
 3.958 Ac. +/-

DESCRIPTION APPROVED
 FOR AUDITOR'S TRANSFER
 BY K. Buckley
 6-24-2002

- All 5/8" steel pins set are 30" long with plastic cap marked "AMD 8050"
- 5/8" rebar found
- Conc. post fd.
- ▲ Point



OFFICE COPY
NOT RECORDABLE
 I, Alan Donaker, P.S. 8050, hereby certify that this is a true and correct copy of a boundary survey pursuant to Chapter 4733.37 Ohio Administrative Code and to be

GRAPHIC SCALE 1"=100'



Grace Johnson
 DR 970-345
 3.958 Ac. +/- & 20' R/W
 SW Qtr. Sec. 19, 4th Qtr.,
 T3N, R9W
 United States Military Lands
 Village of Frazesburg