

BOWMAN AND ASSOCIATES  
91 BASIN STREET  
FRAZEYSBURG OHIO 43822  
614-828-2204

PARCELS

#29-29-80-23-01-000 (PART)  
#29-29-40-18-21-000 (PART) PS  
#29-29-50-19-06-000 (PART)  
#29-29-90-22-12-000 (ALL)

SURVEY DESCRIPTION  
FOR  
PAUL VENSIL

Situated in Sections #18, #19, #22 & #23, T-3-N, R-9-W, U.S.M.L., Jackson Township, Muskingum County, Ohio. Being part of the lands of The Vensil Brothers Farms (a partnership) as conveyed in Deed Book 872 Page 043 of the Muskingum County Deed records and being more particularly described as follows:

Commencing at the Southeast corner of section #18; thence, S.89°41'53"W. a distance of 505.90 feet along the South line of said section to a point in the center of Spencer Road, BEING THE POINT OF BEGINNING; thence, N.23°30'36"W. a distance of 449.94 feet along the centerline of said road to a point; thence, N.39°17'30"W. a distance of 82.48 feet along said centerline to a point; thence, N.52°51'10"W. a distance of 93.19 feet along said centerline to a point; thence, N.69°49'34"W. a distance of 145.30 feet along said centerline to a point; thence, N.79°59'01"W. a distance of 191.50 feet along said centerline to a point; thence, N.80°15'03"W. a distance of 106.94 feet along said centerline to a point; thence, N.41°40'32"W. a distance of 131.56 feet along said centerline to a point on the East line of W. & C. Graham (573/806); thence, N.00°04'56"W. a distance of 58.32 feet along the East line of said Graham lands to a point on the South line of Conrail Corp. lands; thence, N.65°08'24"E. a distance of 1,899.21 feet along the south line of said railroad to a point in the center of the Wakatomika Creek, passing set iron pipes at 25.00 and 1,791.21 feet; thence, meandering with the centerline of the Wakatomika Creek the following 18 courses and distances, S.31°41'17"E. a distance of 224.50 feet to a point; thence, S.32°37'09"E. a distance of 272.59 feet to a point; thence, S.10°21'42"W. a distance of 69.68 feet to a point; thence, S.01°24'27"W. a distance of 186.05 feet to a point; thence, S.10°25'34"E. a distance of 182.77 feet to a point; thence, S.38°57'11"E. a distance of 89.08 feet to a point; thence, S.59°23'40"E. a distance of 72.73 feet to a point; thence, S.86°49'15"E. a distance of 145.15 feet to a point; thence, N.68°42'50"E. a distance of 88.76 feet to a point; thence, S.15°54'56"W. a distance of 102.77 feet to a point; thence, S.36°04'10"W. a distance of 80.26 feet to a point; thence, S.08°29'59"E. a distance of 114.06 feet to a point; thence, S.37°46'45"E. a distance of 124.69 feet to a point; thence, S.53°11'09"E. a distance of 57.58 feet to a point; thence, S.70°13'07"E. a distance of 122.79 feet to a point; thence, S.88°49'09"E. a distance of 50.79 feet to a point; thence, S.35°28'54"E. a distance of 109.34 feet to a point; thence, S.44°34'59"E. a distance of 141.64 feet to a point on the North line of section #22; thence, S.89°41'53"W. a distance of 851.71 feet along the North line of said section to a set iron pipe at the Northwest corner of I. Vickers (679/046); thence, S.33°19'49"E. a distance of 867.35 feet along the Westerly line of said Vickers lands to a set iron pipe on the North line of the Ohio Canal; thence, S.54°03'53"W. a distance of 151.45 feet along the said Canal lands to a set iron pipe; thence, S.62°59'38"W. a distance of 1,043.11 feet along said Canal to a point in the center of Spencer road; thence, N.38°59'56"W. a distance of 143.90 feet along the centerline of Spencer Road to a set railroad spike; thence, N.17°43'52"W. a distance of 910.39 feet along said road to a set railroad spike; thence, N.20°43'14"W. a distance of 133.59 feet along said road to a point; thence, N.23°30'36"W. a distance of 193.77 feet along said road to the point of beginning.

The above described parcel contains 80.567 acres, more or less, (24.220 acres in section #18, 28.089 acres in section #19, 20.392 acres in section #22 and 7.866 acres in section #23) and is subject to all legal easements and right of ways. North is based upon an assumed meridian. All set iron pipes are 3/4" x 30" pipes with I.D. caps.

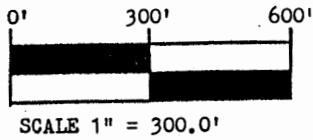
Description prepared from an actual field survey by Bowman & Associates, Stephen M. Bowman P.S. #7135. October 26, 1991.

DESCRIPTION APPROVED  
FOR AUDITOR'S TRANSFER

BY J. L. Hambl  
8-12-92

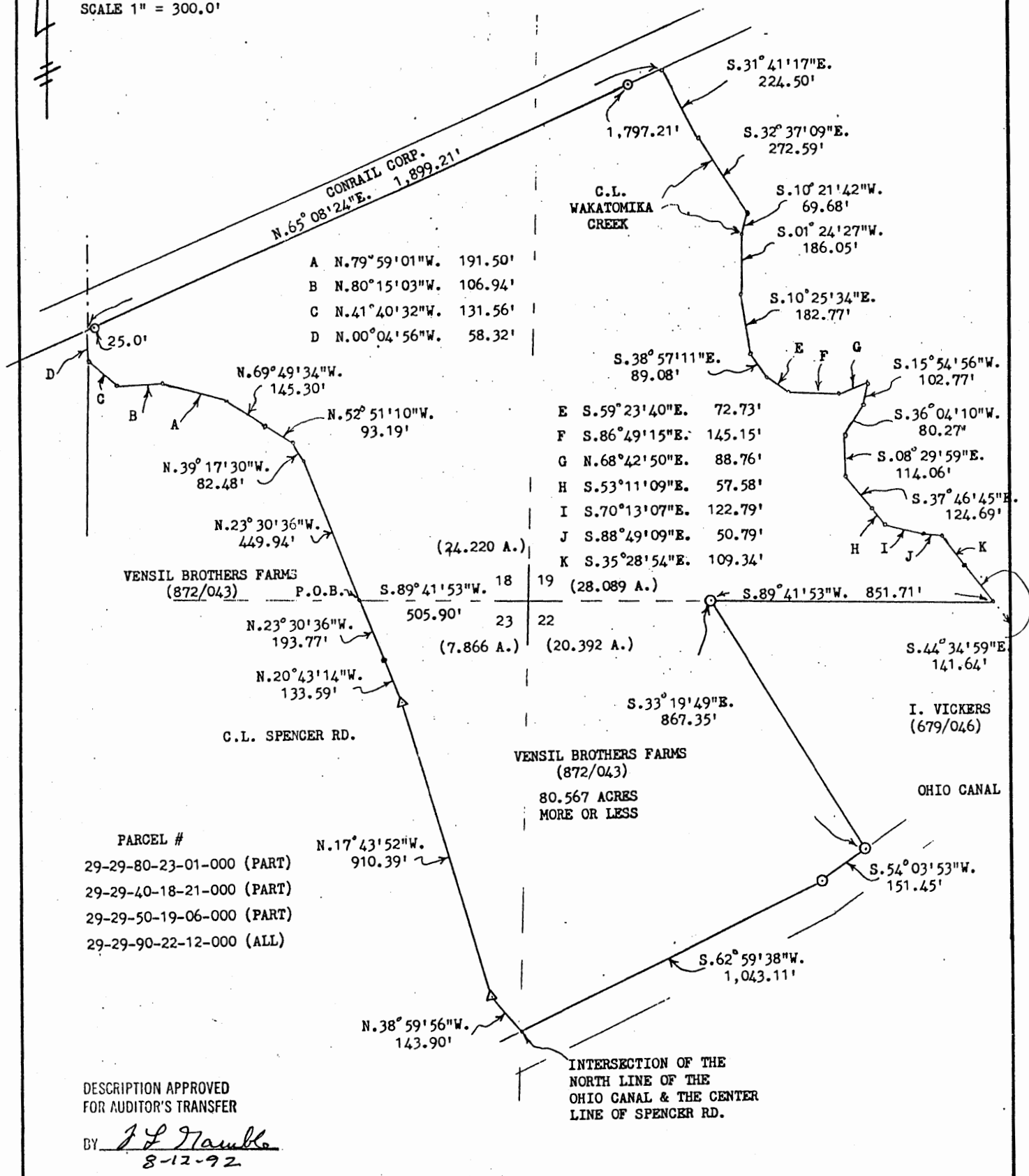
**OFFICE COPY  
NOT RECORDABLE**

NORTH IS BASED UPON AN ASSUMED MERIDIAN



**SURVEY PLAT FOR PAUL VENSIL**

SITUATED IN SECTIONS 18, 19, 22, AND 23, T-3-N, R-9-W, U.S.M.L., JACKSON TOWNSHIP, MUSKINGUM COUNTY, OHIO. BEING PART OF THE LANDS OF THE VENSIL BROTHERS FARMS (A PARTNERSHIP) AS CONVEYED IN DEED BOOK 872 PAGE 43 OF THE MUSKINGUM COUNTY DEED RECORDS.



- A N.79°59'01"W. 191.50'
- B N.80°15'03"W. 106.94'
- C N.41°40'32"W. 131.56'
- D N.00°04'56"W. 58.32'

- E S.59°23'40"E. 72.73'
- F S.86°49'15"E. 145.15'
- G N.68°42'50"E. 88.76'
- H S.53°11'09"E. 57.58'
- I S.70°13'07"E. 122.79'
- J S.88°49'09"E. 50.79'
- K S.35°28'54"E. 109.34'

VENSIL BROTHERS FARMS (872/043) P.O.B.

(24.220 A.)  
 18 19 (28.089 A.)  
 23 22 (7.866 A.) (20.392 A.)

- PARCEL #
- 29-29-80-23-01-000 (PART)
  - 29-29-40-18-21-000 (PART)
  - 29-29-50-19-06-000 (PART)
  - 29-29-90-22-12-000 (ALL)

DESCRIPTION APPROVED FOR AUDITOR'S TRANSFER  
 BY *J.L. Hinkle*  
 8-12-92

INTERSECTION OF THE NORTH LINE OF THE OHIO CANAL & THE CENTER LINE OF SPENCER RD.

**BOWMAN AND ASSOCIATES**  
 91 BASIN ST.  
 FRAZEYSBURG, OHIO 43822

**LEGEND**

- IRON PIN SET      ● IRON PIN FOUND
- △ RR/MINE SPIKE SET    ▲ RR/MINE SPIKE FOUND
- POINT

CLIENT PAUL VENSIL  
 SECTION 18,19,22,23, T. 3, R. 9  
 JACKSON TOWNSHIP, MUSKINGUM COUNTY

I CERTIFY THIS DRAWING REPRESENTS A SURVEY CONDUCTED BY ME ON 10/26/91

**OFFICE COPY**  
 NOT RECORDABLE

STATE OF OHIO  
 STEPHEN M. BOWMAN  
 S-7135  
 REGISTERED PROFESSIONAL SURVEYOR  
 SEAL