

2

of 99.46 (the chord of which bears north 21 degrees 05 minutes 41 seconds west 99.44 feet) to an iron pin on the west line of the aforesaid Lot 48; thence along the west line of Lot 48 north 2 degrees 44 minutes 00 seconds east 723.23 feet to an iron pin; thence south ~~86~~ degrees ~~56~~ minutes 00 seconds east 74.0 feet to an iron pin; thence north 2 degrees 47 minutes 37 seconds ~~west~~ 353.00 feet to the true place of beginning, containing 63.76 acres more or less, and being 14.04 acres in Lot 48 in Cass Township, 12.86 acres in Lot 49 in Cass Township, and 36.86 acres in Lots 48 and 49 in Jefferson Township.

Subject to the easements of Gene Cox Memorial Drive

All of Parcel #10-08-71-38-000, 14.04 Acres
Part of Parcel #10-08-71-34-000, 12.86 Acres
All of Parcel #33-10-01-01-000, 36.86 Acres

OFFICE COPY
NOT RECORDABLE

Parcel Two:

Situated in the State of Ohio, County of Muskingum, Township of Cass.

Being a part of Lots 49 and 50 of Woodbridge-Wakatomika Plat as recorded in Deed Book H, Pages 271, 302 and 303 bounded and described as follows:

Beginning at an iron pin at the northeast corner of said Lot 50; thence along the east line of said Lot 50 south 2 degrees 44 minutes 00 seconds west 412.54 feet to a point on the low water mark of the Muskingum River; thence along the low water mark the following eight (8) courses and distances, south 30 degrees 03 minutes 00 seconds west 68.95 feet to a point; thence south 22 degrees 15 minutes 41 seconds west 224.89 feet to a point; thence south 16 degrees 49 minutes 48 seconds west 204.19 feet to a point; thence south 7 degrees 52 minutes 21 seconds west 197.18 feet to a point; thence south 9 degrees 47 minutes 01 seconds west 190.88 feet to a point; thence south 6 degrees 38 minutes 57 seconds west 201.95 feet to a point; thence south 0 degrees 51 minutes 30 seconds east 205.54 feet to a point; thence south 10 degrees 49 minutes 44 seconds east 231.18 feet to the center of the Wakatomika Creek; thence along the center of the Wakatomika Creek the following twenty-seven (27) courses and distances, north 85 degrees 24 minutes 25 seconds west 245.23 feet to a point; thence north 32 degrees 52 minutes 12 seconds west 181.66 feet to a point; thence north 6 degrees 41 minutes 33 seconds west 142.51 feet to a point; thence north 22 degrees 48 minutes 06 seconds east 134.62 feet to a point; thence north 16 degrees 09 minutes 58 seconds east 210.55 feet to a point; thence north 7 degrees 37 minutes 31 seconds west 229.82 feet to a point; thence north 27 degrees 02 minutes 15 seconds west 212.50 feet to a point; thence north 40 degrees 07 minutes 45 seconds west 231.97 feet to a point; thence north 82 degrees 30 minutes 32 seconds west 168.45 feet to a point; thence south 45 degrees 19 minutes 53 seconds west 172.76 feet to a point; thence south 0 degrees 55 minutes 18 seconds west 185.37 feet

to a point; thence south 30 degrees 45 minutes 00 seconds east 176.42 feet to a point; thence south 20 degrees 27 minutes 21 seconds east 149.66 feet to a point; thence south 37 degrees 46 minutes 00 seconds west 88.0 feet to a point; thence south 73 degrees 25 minutes 49 seconds west 136.53 feet to a point; thence north 79 degrees 19 minutes 43 seconds west 128.01 feet to a point; thence north 75 degrees 40 minutes 26 seconds west 271.03 feet to a point; thence north 42 degrees 16 minutes 00 seconds west 41.24 feet to a point; thence north 15 degrees 09 minutes 02 seconds west 35.55 feet to a point; thence north 40 degrees 11 minutes 34 seconds east 49.97 feet to a point; thence north 59 degrees 11 minutes 37 seconds east 130.93 feet to a point; thence north 2 degrees 22 minutes 27 seconds east 186.68 feet to a point; thence north 47 degrees 10 minutes 15 seconds west 152.34 feet to a point; thence north 60 degrees 42 minutes 09 seconds west 209.65 feet to a point; thence south 72 degrees 10 minutes 49 seconds west 68.59 feet to a point; thence south 60 degrees 30 minutes 15 seconds west 130.87 feet to a point; thence south 80 degrees 12 minutes 00 seconds west 45.11 feet to a point on the east right of way line of the Norfolk and Western Railroad; thence along the east right of way line of said railroad the following three (3) courses and distances, north 23 degrees 12 minutes 00 seconds east 43.96 feet to a point; thence on a curve to the left having a radius of 1397.55 an arc length of 748.83 feet (the chord of which bears north 7 degrees 51 minutes 00 seconds east 739.91 feet) to a point; thence north 7 degrees 36 minutes 23 seconds west 105.27 feet to a point on the north line of Lot 49 and in the center of Gene Cox Memorial Drive; thence along the north line of Lots 49 and 50 south 86 degrees 56 minutes 00 seconds east 1784.32 feet to the place of beginning, containing forty-four and forty-eight hundredths (44.48) acres more or less.

Subject to the easements of Gene Cox Memorial Drive

Part of Parcel #10-08-71-34-000
 All of Parcel #10-08-71-33-000

**OFFICE COPY
 NOT RECORDABLE**

Parcel Three:

Situated in the State of Ohio, County of Muskingum, Township of Cass.

Being a part of Quarter Township 2, Township 3, Range 7 bounded and described as follows:

Beginning at an iron pin on the west line of said Quarter Township 2 at its intersection with the northeast corner of Lot 50 of Woodbridge-Wakatomika Plat as recorded in Deed Book H, Page 271, 302, 303; thence along the west line of said Quarter Township 2, north 2 degrees 44 minutes east 54.12 feet to a point in Gene Cox Memorial Drive; thence south 85 degrees 16 minutes 00 seconds east 255.85 feet to a point on the west line of property owned by Robert and Mary Kinser by deed recorded in Deed Book 1093, Page 124; thence along said west line of

7

Robert and Mary Kinser south 12 degrees 42 minutes 18 seconds west 198.91 feet to a point on the low water mark of the Muskingum River and passing through iron pins found at 13.55 feet and at 158.91 feet; thence along the low water mark the following two (2) courses and distances, south 50 degrees 27 minutes 42 seconds west 219.18 feet to a point; thence south 30 degrees 03 minutes 00 seconds west 128.76 feet to a point on the west line of the aforesaid Quarter Township Line; thence along the west line of Quarter Township 2, north 2 degrees 44 minutes 00 seconds east 412.54 feet to the place of beginning, containing one and sixty-five hundredths (1.65) acres more or less.

Subject to the easements of Gene Cox Memorial Drive.

Being all of Parcel #10-16-02-33-000

This description written February 6, 2002, by L. Peter Dinan, Registered Surveyor #5451.

**OFFICE COPY
NOT RECORDABLE**

DESCRIPTION APPROVED
FOR AUDITOR'S TRANSFER

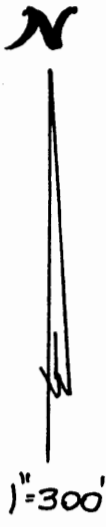
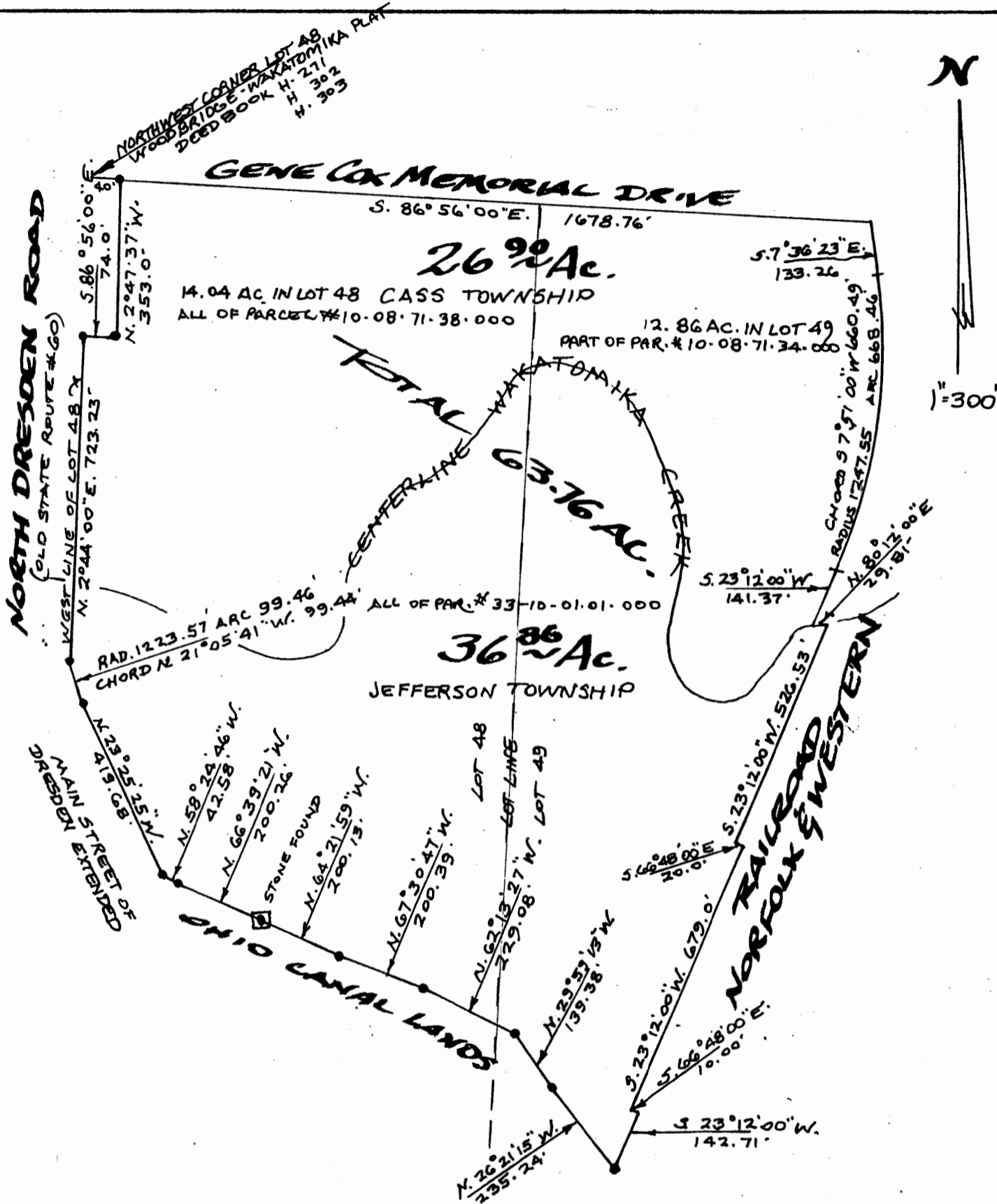
BY MSB

2-11-2002

ADDRESS N/A



L. PETER DINAN & ASSOCIATES
27 SOUTH SIXTH STREET
ZANESVILLE, OHIO



PARCEL ONE
PART OF LOTS 48 & 49
WOODBIDGE-WAKATOMIKA PLAT
IN CASS TOWNSHIP & JEFFERSON TOWNSHIP
MUSKINGUM COUNTY, STATE OF OHIO

FEB. 4, 2002

DESCRIPTION APPROVED
FOR AUDITOR'S TRANSFER

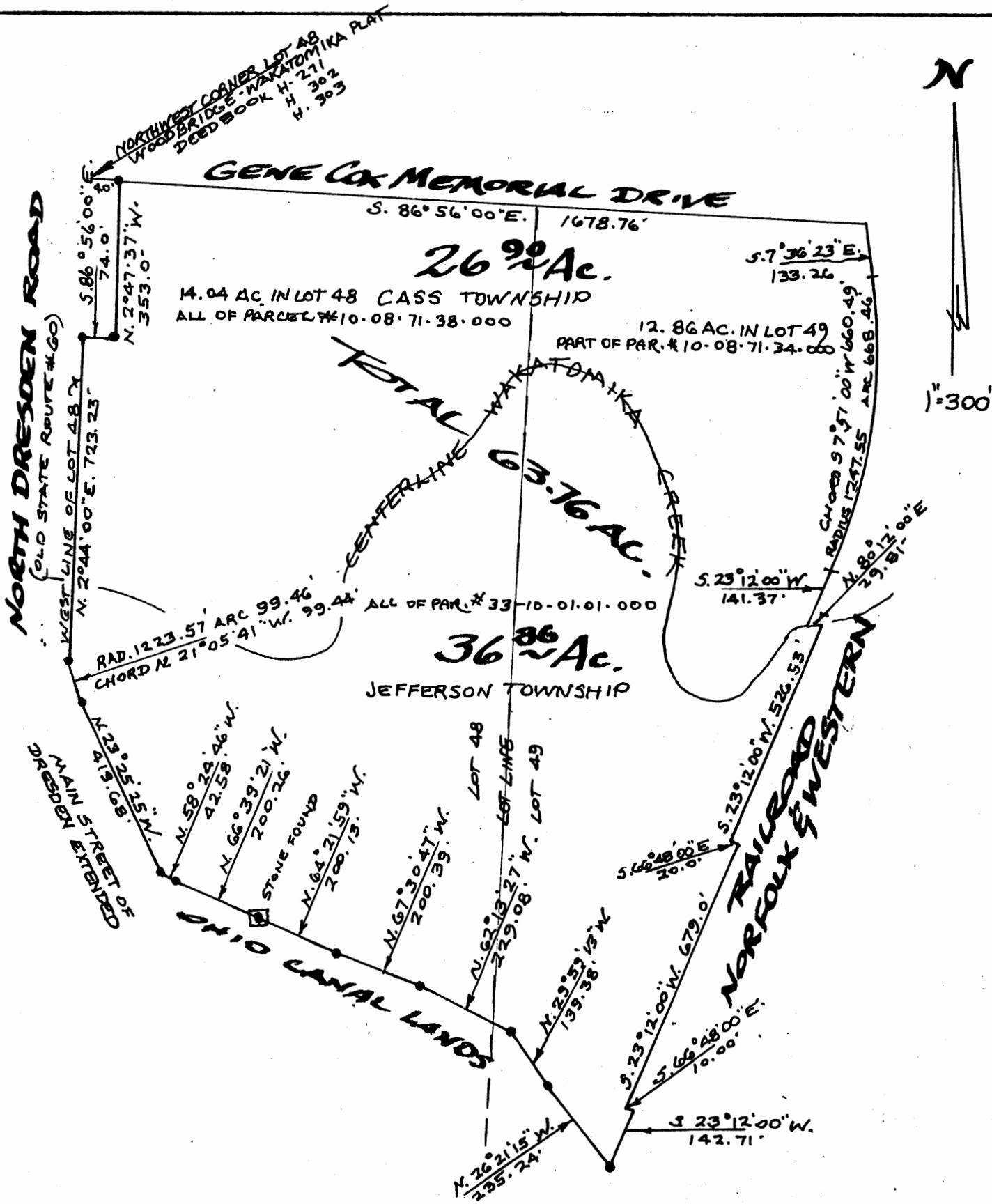
BY LPD
2-11-2002

OFFICE COPY
NOT RECORDABLE

L. PETER DINAN
REGISTERED SURVEYOR # 5451



L. PETER DINAN & ASSOCIATES
27 SOUTH SIXTH STREET
ZANESVILLE, OHIO



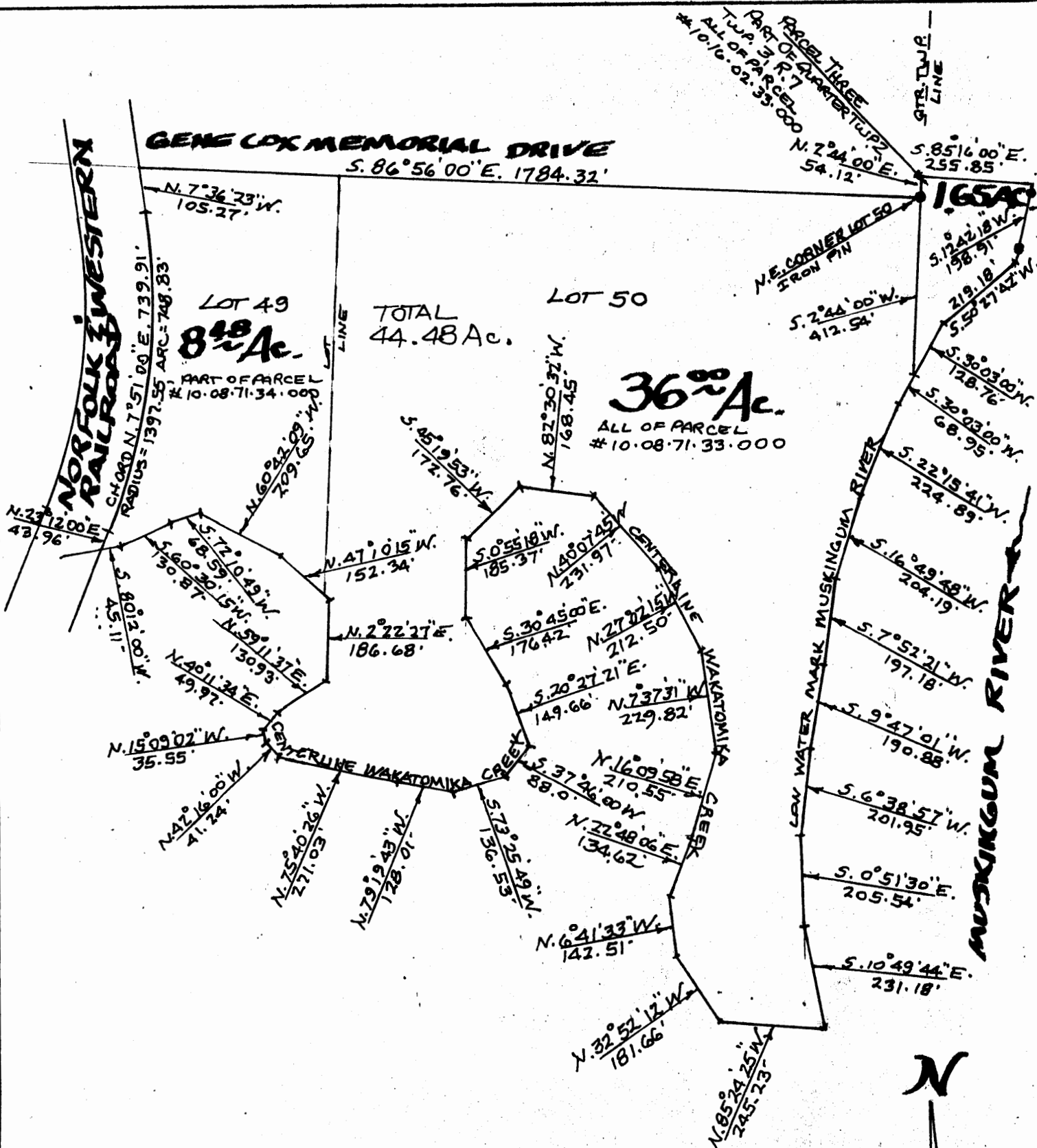
PARCEL ONE
PART OF LOTS 48 & 49
WOODBIDGE - WAKATOMIKA PLAT
IN CASS TOWNSHIP & JEFFERSON TOWNSHIP
MUSKINGUM COUNTY, STATE OF OHIO
FEB. 4 2002

DESCRIPTION APPROVED
 FOR AUDITOR'S TRANSFER
 BY *als*
 2-11-2002

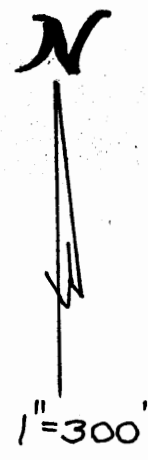
OFFICE COPY
~~**NOT RECORDABLE**~~
 REGISTERED SURVEYOR # 5451



L. PETER DINAN & ASSOCIATES
27 SOUTH SIXTH STREET
ZANESVILLE, OHIO



PARCELS TWO & THREE
PART OF LOTS 49 & 50
WOODBIDGE-WAKATOMIKA PLAT
AND A PART OF QTR-TWP. 2, TWP. 3 RANGE 7
CASS TOWNSHIP
MUSKINGUM COUNTY, OHIO
FEB. 4 2002



DESCRIPTION APPROVED
 FOR AUDITOR'S TRANSFER
 BY *[Signature]*
 2-11-2002

OFFICE COPY
NOT RECORDABLE
 L. PETER DINAN
 REGISTERED SURVEYOR #5451