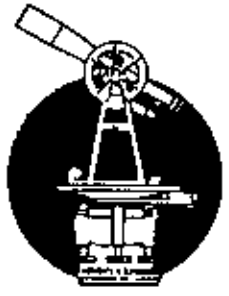


35-30-51-05
6545 PLEASANT VALLEY RD

Phone 453-8448



L. Peter Dinan & Associates

27 South Sixth Street

P. O. Box 55, Zanesville, Ohio 43701

SURVEYING & MAPPING

John Dinan (Partner)
Robert Dinan (Partner)

Description For Conveyance 135.89 Acres

Situated in the State of Ohio, County of Muskingum, Township of Licking.

Being a part of Quarter Township 3, Township 2, Range 9 bounded and described as follows:

Beginning at the northeast corner of Lot 4 of Craigs Survey; thence north 88 degrees 00 minutes 09 seconds west 539.84 feet to a large corner fence post; thence north 2 degrees 09 minutes 37 seconds east 2726.30 feet to a point; thence south 56 degrees 12 minutes 26 seconds east 177.69 feet to a point; thence north 4 degrees 12 minutes 41 seconds east 557.31 feet to a point in the center of Pleasant Valley Road; thence along said centerline north 48 degrees 55 minutes 04 seconds west 220.10 feet to a point; thence north 2 degrees 09 minutes 37 seconds east 1040.14 feet to a monument set on the 790 contour line by survey made by the United States Corps of Engineers of the Dillon Dam Properties; thence along said contour line and also being the property line the following eleven (11) courses and distances south 68 degrees 35 minutes 24 seconds east 276.57 feet to a monument; thence south 78 degrees 42 minutes 23 seconds east 159.96 feet to a monument; thence south 84 degrees 47 minutes 13 seconds east 251.53 feet to a monument; thence south 12 degrees 48 minutes 36 seconds east 174.60 feet to a monument; thence south 5 degrees 43 minutes 20 seconds east 205.44 feet to a monument; thence north 74 degrees 26 minutes 36 seconds east 124.03 feet to a monument; thence north 25 degrees 05 minutes 10 seconds east 268.21 feet to a monument; thence south 15 degrees 47 minutes 03 seconds east 165.79 feet to a monument; thence south 40 degrees 17 minutes 55 seconds east 311.53 feet to a monument; thence south 40 degrees 10 minutes 43 seconds east 209.91 feet to a monument; thence south 30 degrees 44 minutes 57 seconds east 251.89 feet to a monument; thence leaving said 790 contour line south 2 degrees 42 minutes west 3393.07 feet to an iron pin on the north line of Lot 3 of Craig's Survey; thence along the north line of said Lot 3 north 88 degrees 00 minutes 09 seconds west 933.94 feet to the place of beginning, containing one hundred thirty-five and eighty-nine hundredths (135.89) acres more or less.

Subject to the easements of Pleasant Valley Road.

This description written from a survey made by L. Peter Dinan, Surveyor #5451, September 7, 1990.

DESCRIPTION APPROVED
FOR AUDITOR'S TRANSFER

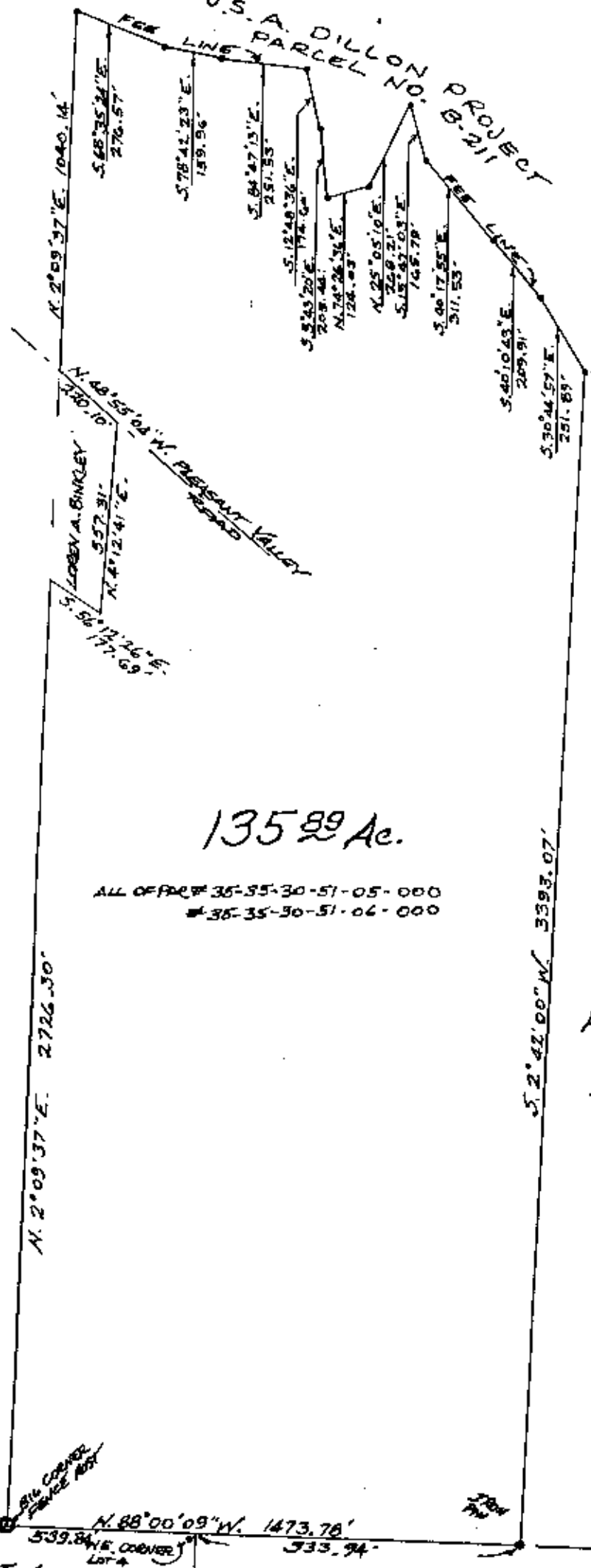
**OFFICE COPY
NOT RECORDABLE**

BY J. J. Hamble

Par # 35-30-51-05-000
35-30-51-06-000

9-12-90

U.S.A. DILLON PROJECT
 PARCEL NO. B-211



135.89 Ac.

ALL OF PARCELS 35-35-30-51-05-000
 & 35-35-30-51-06-000



1" = 300'

PART OF QTR. TWP 3 TWP 2 R 9
 LICKING TOWNSHIP
 MUSKINGUM COUNTY, OHIO
 SEPT. 6, 1990

DESCRIPTION APPROVED
 FOR AUDITOR'S TRANSFER

BY A. J. Marshall
 9-12-90

OFFICE COPY
NOT RECORDED

LOT 4
 N. 88° 00' 09" W. 1473.78'
 539.84' (E. CORNER) LOT 4
 333.94'
 LOT 3
 CRAIGS SURVEY