

**BOESHART & ASSOCIATES  
612 HUDSON AVENUE  
NEWARK, OHIO 43055  
PHONE: 614-345-2261**

August 21, 1992

Surveyor's Description

**12.791 Acres**

The parcel herein described is known as being a part of the same lands conveyed to Lee & Hazel Esworthy as described in Deed Volume 555 on Page 761 found recorded in the Muskingum County Recorder's Office in Zanesville, Ohio and is better known as being in the Third Quarter of Licking Township, Township 2 North in Range 9 West in the U.S. Military Lands of Muskingum County, Ohio and is better described as follows:

Beginning at an existing iron pin located 1951.1 feet west of the NE corner of Lot 4 in Craig's Survey; thence, North 85 degrees 47 minutes 57 seconds West, 1370.87 feet to a set iron pin on the line between Licking and Muskingum Counties; thence, with the west line of Muskingum County, North 3 degrees 56 minutes 15 seconds East, passing a set iron pin at 208.15 feet, a total distance of 228.15 feet to the center of Crown Road (County Road 121); thence, with the center of the said road the following ten courses, North 82 degrees 53 minutes 20 seconds East, 88.02 feet to a point; thence, North 72 degrees 58 minutes 50 seconds East, 124.18 feet to a point; thence, North 73 degrees 49 minutes 50 seconds East, 103.71 feet to a point; thence, North 80 degrees 13 minutes 25 seconds East, 119.65 feet to a point; thence, North 80 degrees 41 minutes 55 seconds East, 121.19 feet to a point; thence, North 77 degrees 24 minutes 15 seconds East, 206.42 feet to a point; thence, North 84 degrees 10 minutes 35 seconds East, 120.89 feet to a point; thence, North 89 degrees 10 minutes 10 seconds East, 203.87 feet to a point; thence, North 86 degrees 09 minutes 40 seconds East, 307.44 feet to a point; thence, leaving the said road, South 6 degrees 03 minutes 27 seconds East, passing an existing iron pin at 9.85 feet, a total distance of 94.47 feet to an existing iron pin; thence, South 4 degrees 30 minutes 25 seconds West, 432.27 feet to the true point of

beginning. Containing 12.791 acres and being subject to all legal roads, easements and restrictions of record.

The bearings used in this description are based on the bearings found in D.V. 847 on Page 158.

I hereby certify that the above description represents a true and correct survey and all measurements were made in accordance with Chapter 4733-37 of the Ohio Administration Code.

*Paul J. Goshart*  
**OFFICE COPY**  
**NOT RECORDABLE**  
Paul J. Goshart, P.L.S.  
Registration No. S-6512



DESCRIPTION APPROVED  
FOR AUDITOR'S TRANSFER

BY *J. L. Nambler*  
1-07-93

DESCRIPTION APPROVED  
FOR ADDITION'S TRANSFER

*C. H. Nasmith*  
1-07-93

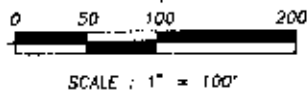
NORTH

*Part of the Lee & Hazel Esworthy Parcel*

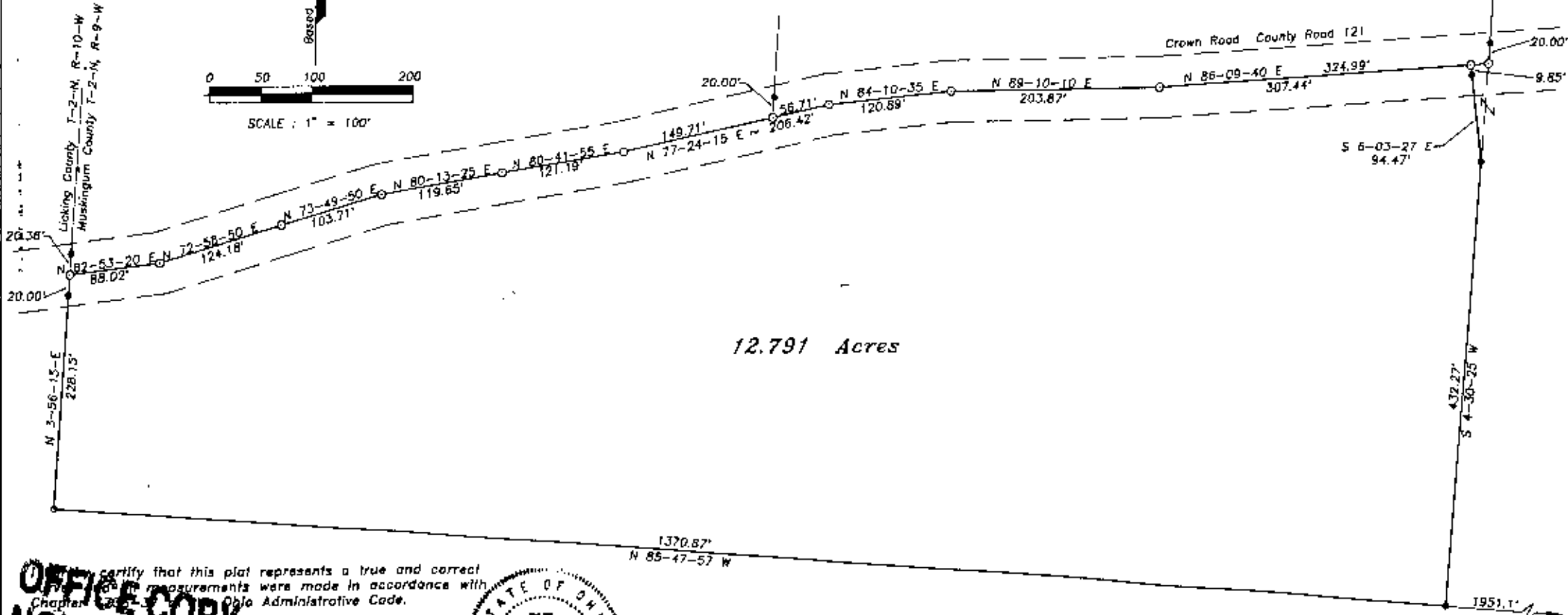
Vol. 536 Pg. 548 Vol. 555 Pg. 761

Charles O. Engle, Trustee  
O.V. 847 Pg. 158

State of Ohio  
Muskingum County  
Licking Township  
Quarter 3  
Township 2 North  
Range 9 West  
U.S. Military Lands



Based on D.V. 847 Pg. 158



12.791 Acres

OFFICE COPY  
NOT RECORDABLE  
I certify that this plat represents a true and correct  
description of the land and that all measurements were made in accordance with  
Chapter 307-31, Ohio Administrative Code.  
Paul J. Boeshart  
Registration No. S-12



- = Existing iron pin
- = 5/8" x 32" Iron Pin with 10 cap S-8512 set
- = Unmarked Corner

M. & R. Scanlon  
D.V. 400 Pg. 335

To NE  
Corner  
Lot 4  
Craig's  
Survey

Boeshart & Associates 612 Hudson Avenue  
Newark, Ohio 43055 Ph. 614-345-2261

Job No. 92-328  
Date: August 20, 1992

35-30-51-12