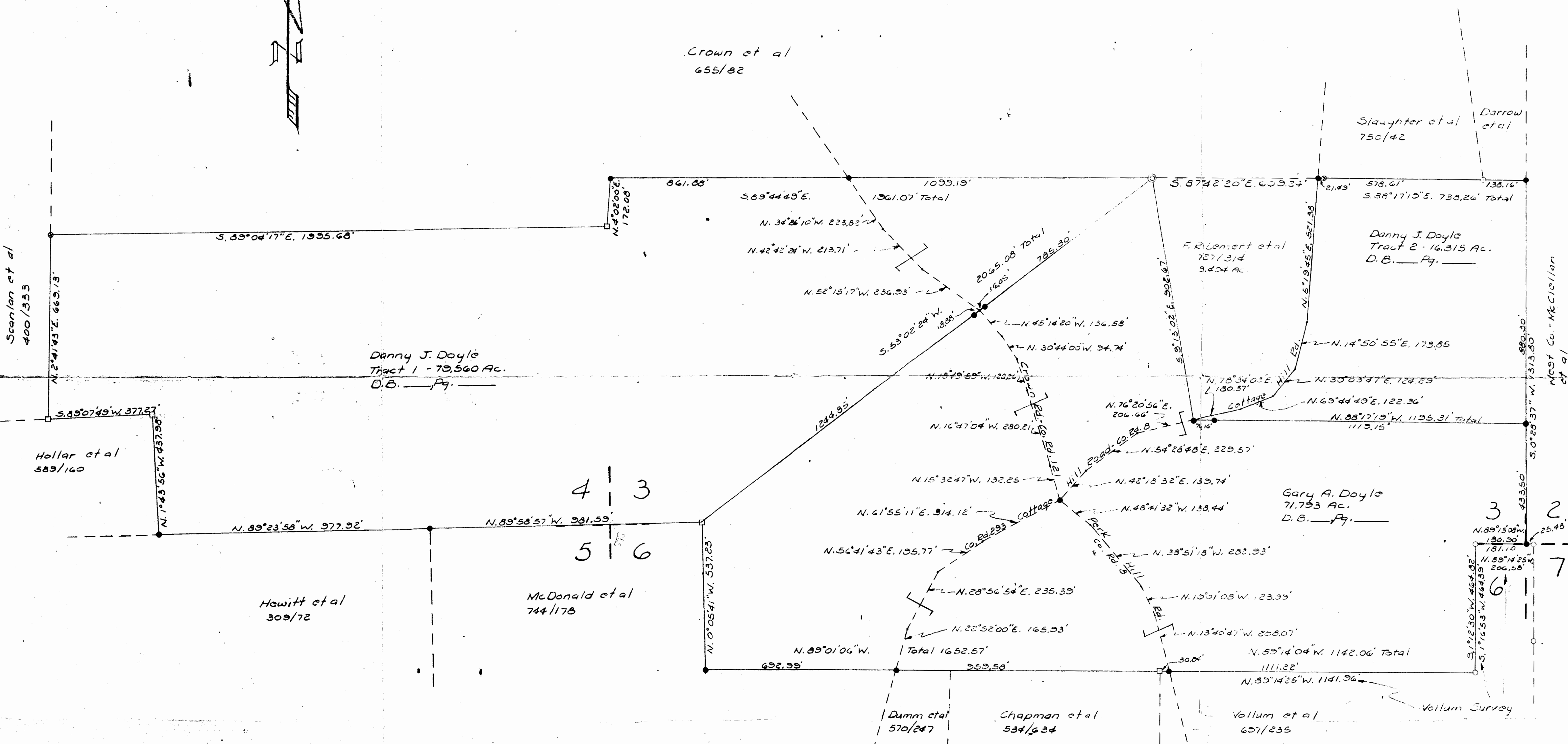


# DOYLE FARM

35-30-61-07 PS  
 35-30-61-14 PS  
 35-30-61-15 PS  
 35-30-61-35 PS N/A



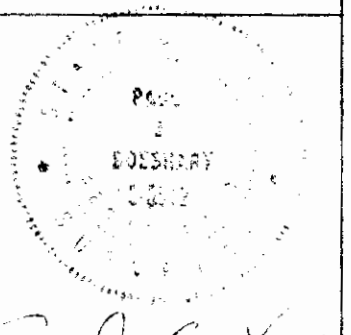
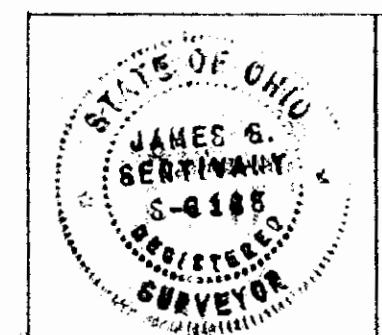
**SURVEY FOR DANNY & GARY DOYLE**  
 PART OF 3<sup>RD</sup> QUARTER, TWP. 2 N, RANGE 9 W,  
 LICKING TWP, MUSKINGUM CO., OHIO

## LEGEND

- Iron Pin Set
- Iron Pin Found
- Stone Found
- ⊙ Axle Found
- ⊙ Corner Post
- Scale 1" = 200'
- Oct., 1978

**OFFICE COPY  
 NOT RECORDABLE**

We hereby certify that we have surveyed the land shown on this plat and that it is correct as shown hereon.

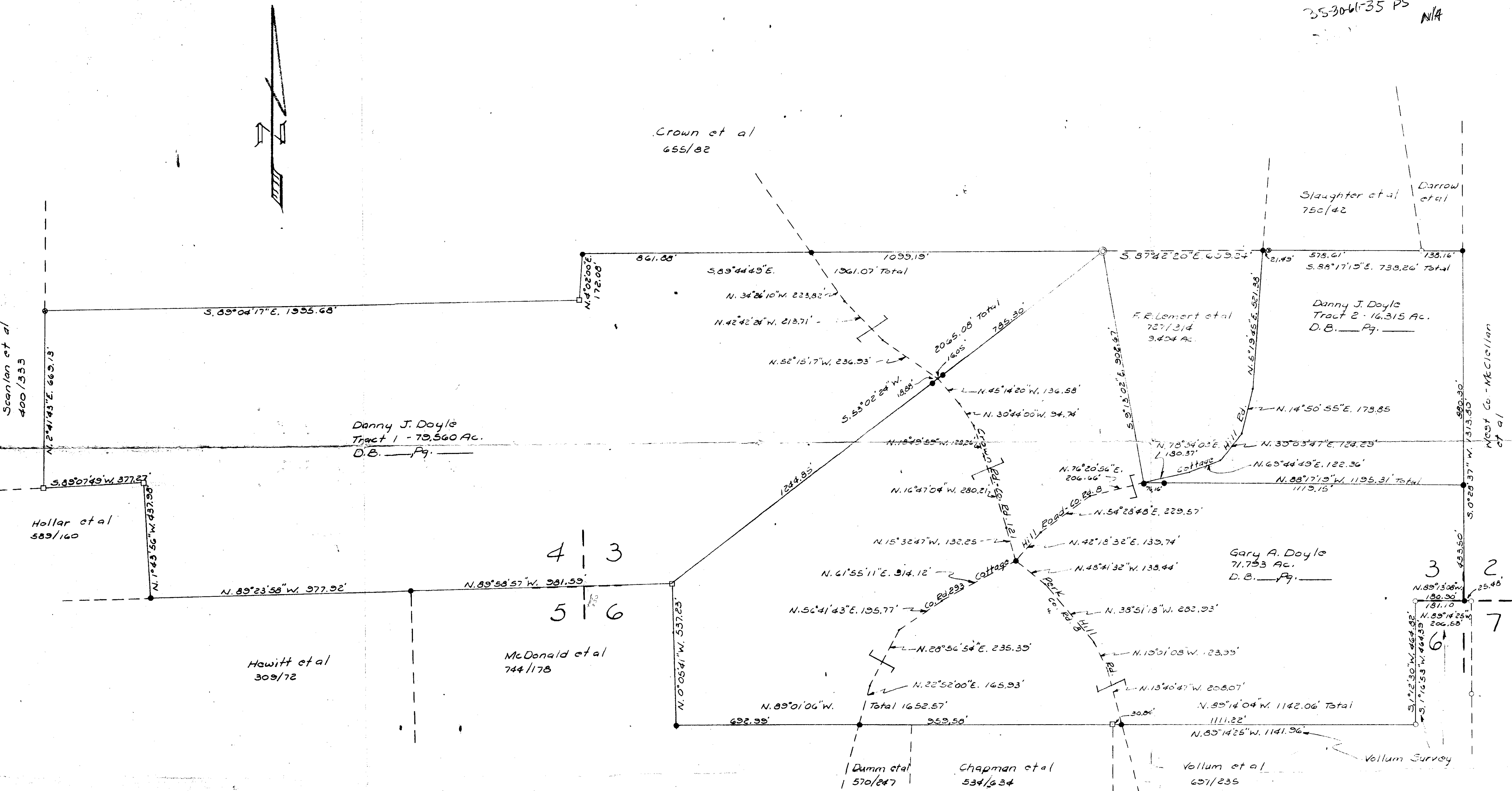


James G. Gentry  
 Fred J. Puchert  
 B-5

# DOYLE FARM

35-30-61-07 PS  
 35-30-61-14-PS  
 35-30-61-15 PS

35-30-61-35 PS N/A



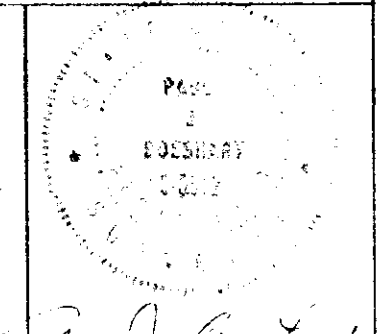
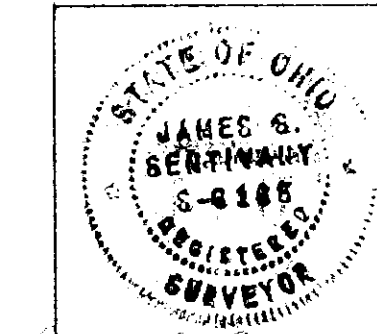
**SURVEY FOR DANNY & GARY DOYLE  
 PART OF 3<sup>RD</sup> QUARTER, TWP. 2 N., RANGE 9 W.  
 LICKING TWP, MUSKINGUM CO., OHIO**

## LEGEND

- Iron Pin Set
- Iron Pin Found
- Stone Found
- ⊙ Axle Found
- ⊙ Corner Post
- Scale 1" = 200'
- Oct., 1978

**OFFICE COPY  
 NOT RECORDABLE**

We hereby certify that we have surveyed the land shown on this plat and that it is correct as shown hereon.



James S. Gerpinny  
 B-5