



Linn Engineering, Inc.

Civil Engineering Consultants

740-452-7434 • 1-800-991-7434 • FAX 740-452-5198

534 Market Street • P.O. Box 2086 • Zanesville, Ohio 43702-2086

35-44-01-06

6535 CREAMERY RD

Situated in the State of Ohio, County of Muskingum, Township of Licking, bounded and described as follows:

Being part of the North Half of the Fourth Quarter and being part of Lots 4 and 5 of a subdivision made by the heirs of Thomas Willis as the same is designated and delineated in Muskingum County Plat Book. A-O, Page 114, and being more particularly described as follows:

Beginning at an iron pin set at the southeast corner of Lot 4 of a subdivision of Thomas Willis Lands as the same is designated and delineated in Muskingum County Plat Book. A-O, Page 114; THENCE along the north line of lands presently owned by David Bay (DR 1097-572) North 87 degrees 20 minutes 49 seconds West 412.50 feet to an iron pin found;

THENCE along the east line of lands presently owned by M. Crittenden (DR 1047-537) North 02 degrees 02 minutes 44 seconds East 619.80 feet to an iron pin set on Crittenden's northeast corner;

THENCE along said Crittenden's north line South 89 degrees 17 minutes 52 seconds West 498.30 feet to an iron pin set;

THENCE continuing along said Crittenden's north line North 88 degrees 05 minutes 07 seconds West 964.66 feet to an iron pin set on the southeast corner of lands presently owned by J.D. and H. McCann (DR 1160-146);

THENCE North 01 degrees 53 minutes 34 seconds East for a distance of 1186.64 feet to a point in the centerline of Creamery Road (Co. Rd. 500), passing an iron pin set at 1158.64 feet;

THENCE along said centerline of Creamery Road the following thirteen courses;

- 1) South 69 degrees 27 minutes 24 seconds East for a distance of 89.46 feet to a point;
- 2) South 77 degrees 12 minutes 38 seconds East for a distance of 60.82 feet to a point;
- 3) South 84 degrees 50 minutes 27 seconds East for a distance of 88.53 feet to a point;
- 4) North 87 degrees 53 minutes 38 seconds East for a distance of 87.77 feet to a point;
- 5) North 80 degrees 32 minutes 05 seconds East for a distance of 119.33 feet to a point;
- 6) North 70 degrees 15 minutes 39 seconds East for a distance of 104.55 feet to a point;
- 7) North 63 degrees 14 minutes 55 seconds East for a distance of 63.52 feet to a point;
- 8) North 61 degrees 02 minutes 21 seconds East for a distance of 200.68 feet to a point;
- 9) North 61 degrees 16 minutes 53 seconds East for a distance of 313.30 feet to a point;
- 10) North 61 degrees 02 minutes 02 seconds East for a distance of 208.29 feet to a point;
- 11) North 60 degrees 57 minutes 10 seconds East for a distance of 346.18 feet to a point;
- 12) North 60 degrees 40 minutes 16 seconds East for a distance of 181.01 feet to a point;
- 13) North 60 degrees 54 minutes 01 seconds East for a distance of 288.83 feet to a point on the west line of lands presently owned by F.P. and M.L. Frueh (DR 1157-843);

THENCE along said Frueh's west line South 02 degrees 43 minutes 18 seconds West of 613.12 to a point on the northwest corner of lands presently owned by Muskingum Valley Beagle Club, (DR 461-37), passing an iron pin set at 35.00 feet and an iron pin found at 610.12 feet;

THENCE along said Muskingum Valley Beagle Club's west line South 02 degrees 41 minutes 39 seconds West 2020.16 feet to the principal place of beginning,

containing 70.27 acres more or less, subject to the Dillon Lake Flowage Easement, and other applicable legal easements and right of ways.

Iron pins set are 5/8 inch diameter by 30 inch long rebar with plastic identification caps.

Bearings are based on the east line of J.D. and H. McCann property (DR 1160-146) as per previous survey and north line was established by GPS observations, bearings are for angular use only.

This description is written based on a survey completed September 14, 2000 by Jack D. Newcome, Reg. No. 7321.

OFFICE COPY

NOT RECORDABLE

09/14/00
Date

Jack D. Newcome
Reg. No. 7321

Parcel No.:

Part of: 35-35-44-01-06-000 (70.27 ac.)

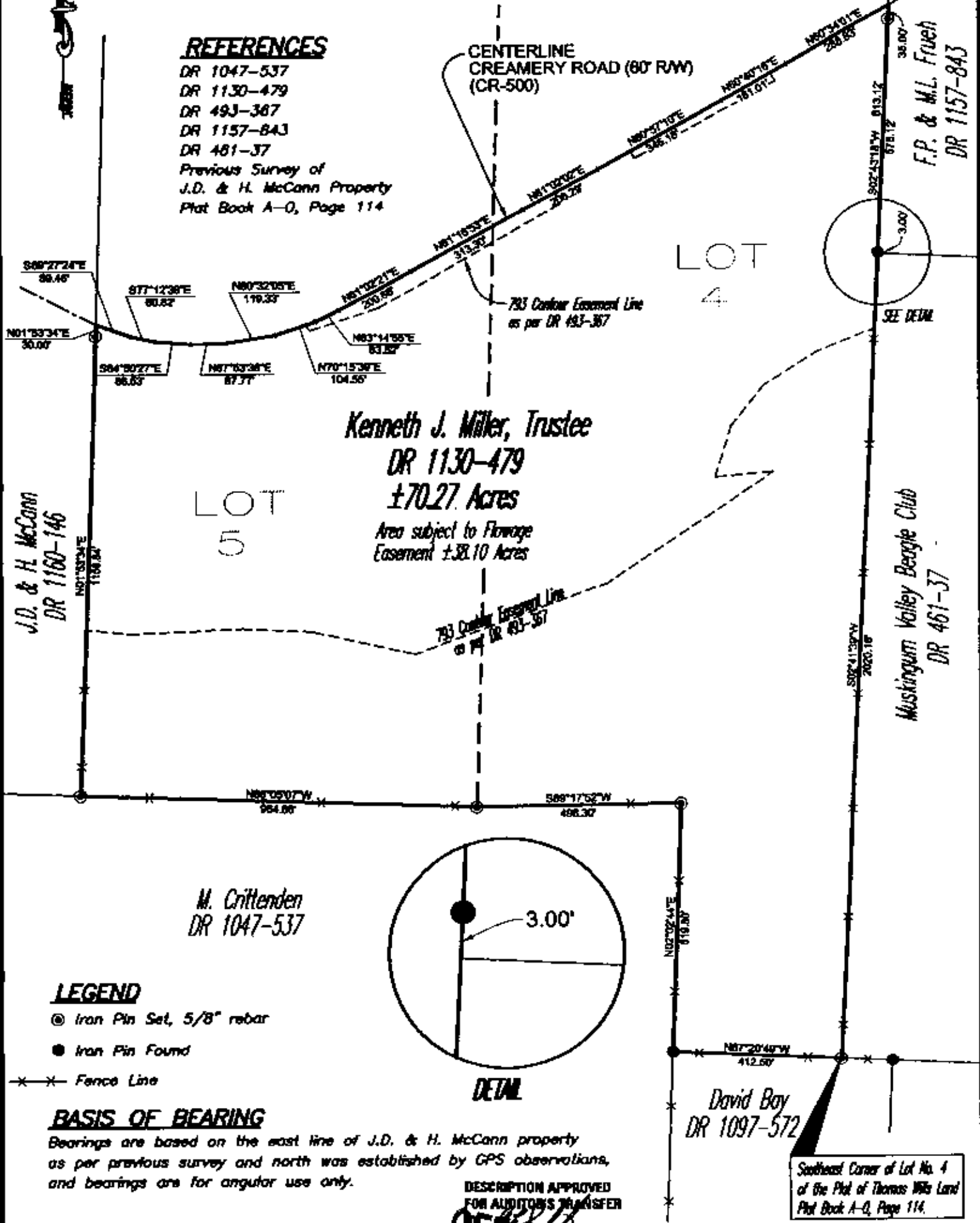
DESCRIPTION APPROVED
FOR AUDITOR'S TRANSFER
BY [Signature]
9-20-2000

SITUATED IN

The State of Ohio, County of Muskingum, Township of Licking, Part of the North Half of the 4th Quarter, and being part of Lots 4 & 5 of a subdivision made by heirs of Thomas Mills, Plat Book A-Q, Page 114.

REFERENCES

DR 1047-537
 DR 1130-479
 DR 493-387
 DR 1157-843
 DR 481-37
 Previous Survey of
 J.D. & H. McCann Property
 Plat Book A-Q, Page 114



Kenneth J. Miller, Trustee
DR 1130-479
±70.27 Acres
 Area subject to Flowage
 Easement ±38.10 Acres

M. Crittenden
DR 1047-537

LEGEND

- ⊙ Iron Pin Set, 5/8" rebar
- Iron Pin Found
- *—*— Fence Line

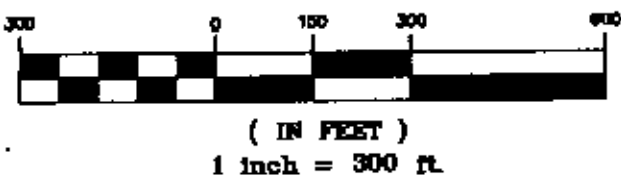
BASIS OF BEARING

Bearings are based on the east line of J.D. & H. McCann property as per previous survey and north was established by GPS observations, and bearings are for angular use only.

PARCEL NO.

Part of: 35-35-44-01-08-000(±70.27 ac.)

GRAPHIC SCALE



DESCRIPTION APPROVED
 FOR AUDITOR'S TRANSFER

**OFFICE COPY
 NOT RECORDABLE**

Jack D. Newcome Date
 Reg. Surveyor No. 7321

Project No.: LONG-MILLER



Linn Engineering, Inc. 740-458-7434
 Civil Engineering Consultants
 P.O. Box 2086 Zanesville, Ohio 43702-2086

SEAL
 Southeast Corner of Lot No. 4
 of the Plat of Thomas Mills Land
 Plat Book A-Q, Page 114.

G:\CIVIL\LONG-MILLER SURVEY-DIAT.DWG, 05/15/00 06:45:07 AM, VC