

7. S 46°39'48" W, a distance of three hundred twelve and seventy-three hundredths (312.73) feet to a point;
8. S 42°57'59" W, a distance of four hundred four and ninety hundredths (404.90) feet to a point;
9. S 50°23'19" W, a distance of seven hundred forty-eight and fifteen hundredths (748.15) feet to a point;
10. S 65°14'34" W, a distance of two hundred eighty-three and thirty-four hundredths (283.34) feet to a point;
11. S 79°34'32" W, a distance of two hundred forty-one and twenty-six hundredths (241.26) feet to a point;
12. N 58°51'01" W, a distance of four hundred thirty and eighty-four hundredths (430.84) feet to a point;
13. N 75°46'21" W, a distance of two hundred twenty-one and sixty-three hundredths (221.63) feet to a point on the East line of the lands of Gilbert Cox, et al 657/314;

thence, along the said lines of the lands of Gilbert Cox, et al with the following three (3) courses:

1. N 17°18'27" E, a distance of one hundred forty-nine and seventy-six hundredths (149.76) feet to a concrete monument set on the North bank of the said Muskingum River;
2. Continuing N 17°18'27" E, a distance of nine hundred eighty-seven and fifty-seven hundredths (987.57) feet to a set concrete monument;
3. N 75°16'37" W, a distance of six hundred three and fifty-eight hundredths (603.58) feet to a recovered concrete column at the Southeast corner of the lands of Gray Farms Partnership 781/282;

thence, along the East line of the said lands of Gray Farms Partnership with the following seven (7) courses:

1. N 58°28'23" W, a distance of six hundred sixty-four and seventy hundredths (664.70) feet to a concrete monument set at the South end of the old Muskingum River channel;
2. running through the said old Muskingum River channel N 16°11'00" W, a distance of one thousand three hundred fifty-five and eighty-five hundredths (1,355.85) feet to a concrete monument set on the Northwest bank of the said old Muskingum River channel;
3. N 24°18'49" W, a distance of six hundred fifteen and ninety-five hundredths (615.95) feet to a point in a cultivated field;
4. N 18°42'03" W, a distance of four hundred four and fifty-five hundredths (404.55) feet to a point in a cultivated field;
5. N 08°47'41" W, a distance of four hundred and ninety-five hundredths (400.95) feet to a recovered stone;
6. N 88°11'14" W, a distance of seven hundred five and fifty-eight hundredths (705.58) feet to a point;
7. N 01°27'49" W, a distance of three hundred thirteen and twenty-two hundredths (313.22) feet to a concrete monument set on the South line of the lands of the Norfolk and Western Railroad which point is S 01°27'49" E, a distance of two hundred thirty-six and ten hundredths (236.10) feet from a set steel pin at the Southeast corner of Lot 13 in ~~the~~ addition to the Village of Preston, P.B. 3, Page 72 (Now the Village of ~~the~~ Mills);

OFFICE COPY
NOT RECORDABLE

thence, with the said South line of the lands of the Norfolk and Western Railroad, N 67°13'11" E, a distance of one thousand seven hundred eighty-one and fifteen hundredths (1,731.15) feet to a concrete monument set on the said North line of Muskingum County;

thence, with the said North line of Muskingum County, S 88°11'14" E, a distance of two thousand four hundred fifty-three and one hundredths (2,453.01) feet to the point of beginning.

This tract contains three hundred eighty-four and four hundred six thousandths (384.406) acres, more or less, of which three hundred thirty-two and three hundred eighty-six thousandths (332.386) acres are in Cass Township and fifty-two and two hundredths (52.02) acres are in Madison Township as surveyed by G. A. Stewart, Registered Surveyor #414, July 31, 1984.

This description is intended to convey part of the lands previously transferred from Catherine Scott Hunt, Esther Scott Galloway, Agnus E. Scott, and Ellenor Scott Evans to Three Springs Farm, Inc., 279/439.

Note: The following documents were used as sources of data for the above described survey:

Maps: Gray's 1st Addition to the Village of Preston P.B. 3/72

Ohio-Erie Canal Land Maps Sheets 111, 112 & 113

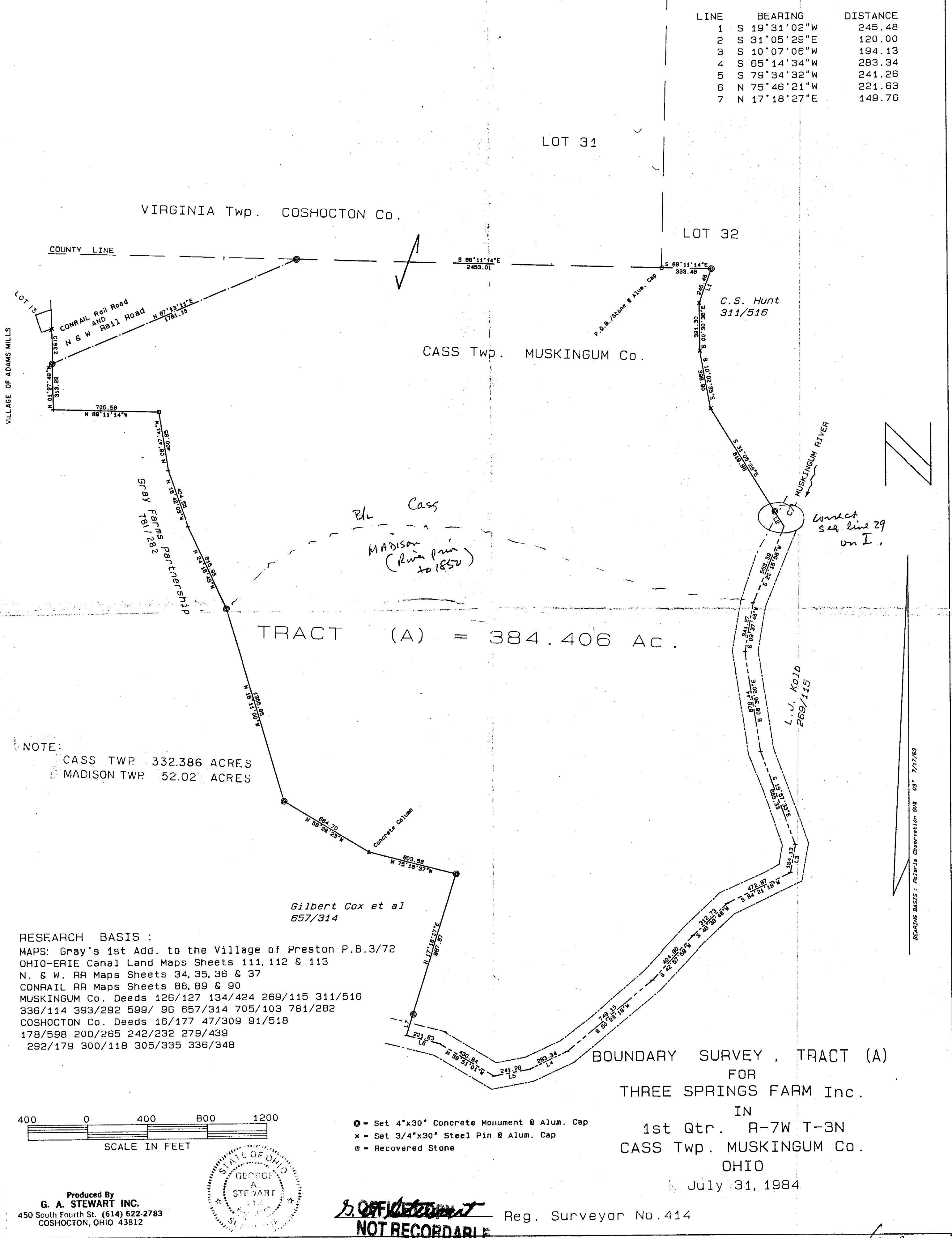
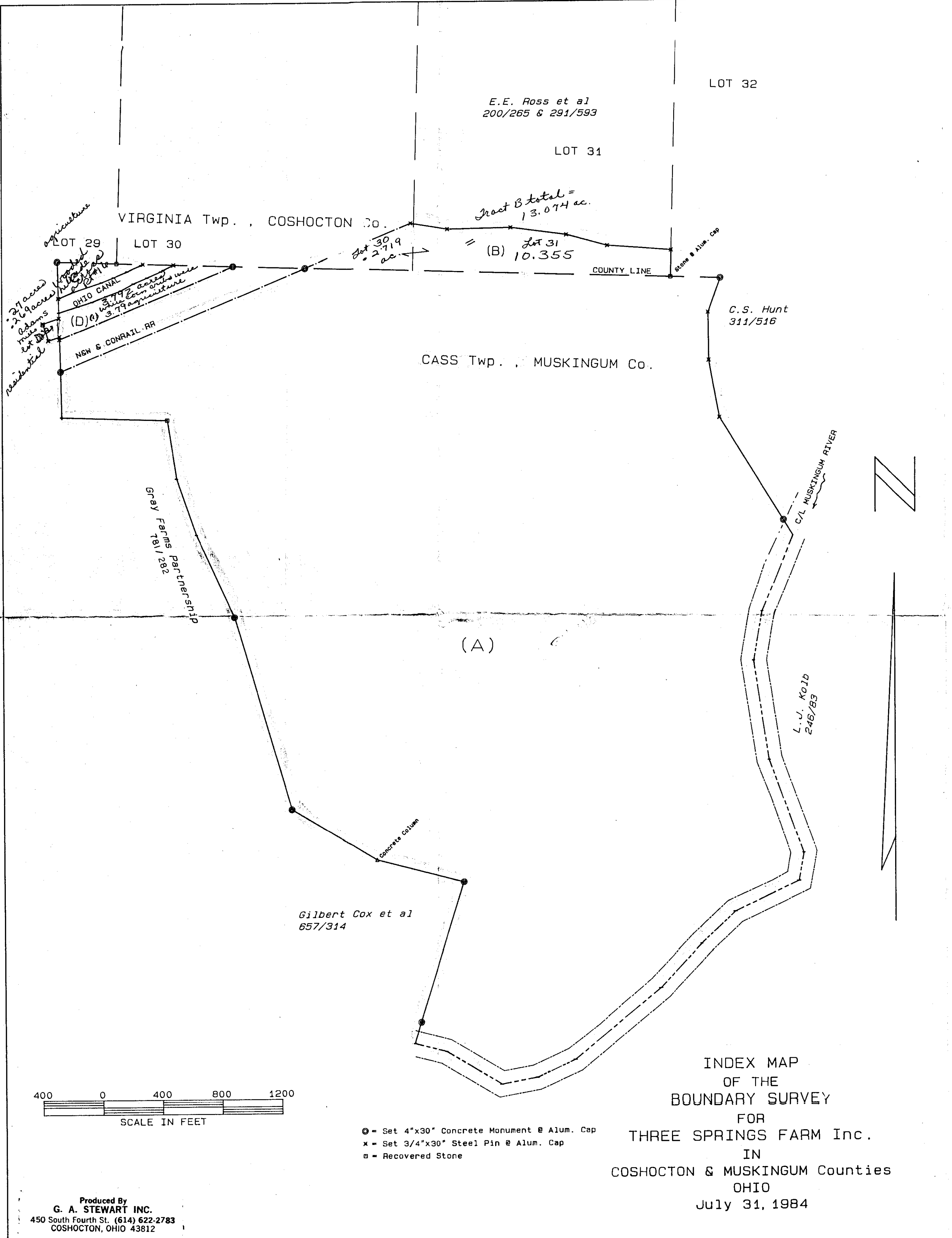
N. & W. RR Maps Sheets 34, 35, 36 & 37

Conrail RR Maps Sheets 88, 89 & 90

Muskingum County Deeds: 126/127, 134/424, 269/115, 311/516, 336/114, 393/292, 599/196, 657/314, 705/103, 781/282

Coshocton County Deeds: 16/177, 47/309, 91/518, 178/598, 200/265, 242/232, 279/439, 292/179, 300/118, 305/335, 336/348

**OFFICE COPY
NOT RECORDABLE**



Produced By
G. A. STEWART INC.
450 South Fourth St. (614) 622-2783
COSHOCTON, OHIO 43812

INDEX MAP
OF THE
BOUNDARY SURVEY
FOR
THREE SPRINGS FARM Inc.
IN
COSHOCTON & MUSKINGUM Counties
OHIO
July 31, 1984

Produced By
G. A. STEWART INC.
450 South Fourth St. (614) 622-2783
COSHOCTON, OHIO 43812



~~Official~~
NOT RECORDABLE
Reg. Surveyor No. 414

Exhibit II (see survey 3/27/89)