

BEING A PART OF A TRACT CONVEYED TO W. KREBS AND B. LENTZ CONVEYED IN DEED VOLUME 840, PAGE 230 OF THE MUSKINGUM COUNTY DEED RECORDS; SITUATED IN THE 2ND QUARTER OF THE THIRD TOWNSHIP, RANGE 7, OF THE UNITED STATES MILITARY LANDS, MADISON TOWNSHIP, MUSKINGUM COUNTY, OHIO AND BEING FURTHER DESCRIBED AS FOLLOWS; COMMENCING AT AN EXISTING IRON PIN (5/8 INCH REBAR) AT THE NORTHEAST CORNER OF LOT NUMBER 2 OF A SURVEY BY CHARLES ROBERTS IN 1814 AS RECORDED IN DEED BOOK "D", PAGE 275 OF THE SAID COUNTY RECORDS; THENCE WITH THE SOUTH LINE OF SAID QUARTER TOWNSHIP TWO NORTH 89 DEGREES 21 MINUTES 31 SECONDS WEST 415.80 FEET TO A POINT IN THE CENTER OF STATE ROUTE 208, SAID POINT BEING THE PLACE OF BEGINNING OF THE TRACT HEREIN INTENDED TO BE DESCRIBED; THENCE LEAVING SAID ROAD AND CONTINUING WITH THE SAID QUARTER LINE NORTH 89 DEGREES 21 MINUTES 31 SECONDS WEST, PASSING IRON PINS SET AT 94.51 FEET, 827.82 FEET, AND 1363.17 FEET, A TOTAL DISTANCE OF 1780.63 FEET TO AN IRON PIN SET ON THE EAST LINE OF A TRACT CONVEYED TO M. L. PRINCE AS RECORDED IN DEED VOLUME 1038, PAGE 513 OF THE SAID RECORDS, SAID IRON PIN BEING NORTH 00 DEGREES 57 MINUTES 33 SECONDS EAST 80.00 FEET FROM AN EXISTING IRON PIN (3/4 INCH PIPE) AT THE SOUTHEAST CORNER OF SAID PRINCE TRACT; THENCE WITH THE EAST LINE OF SAID TRACT NORTH 00 DEGREES 57 MINUTES 33 SECONDS EAST, PASSING AN IRON PIN SET AT 55.80 FEET, A TOTAL DISTANCE OF 100.10 FEET TO A POINT IN THE CENTER OF STATE ROUTE 208; THENCE WITH THE CENTER OF STATE ROUTE 208 THE NEXT TWO COURSES AND DISTANCES:

- 1) SOUTH 74 DEGREES 18 MINUTES 31 SECONDS EAST 30.26 FEET TO A POINT,
- 2) SOUTH 70 DEGREES 03 MINUTES 20 SECONDS EAST 42.07 FEET TO A POINT, SAID POINT BEING AT THE SOUTHEAST CORNER OF A 5.204 MORE OR LESS ACRE TRACT CONVEYED TO STEVE LITTLE; THENCE LEAVING SAID ROAD AND FOLLOWING THE EAST LINE OF SAID LITTLE TRACT NORTH 34 DEGREES 28 MINUTES 11 SECONDS EAST, PASSING AN EXISTING IRON PIN (5/8 INCH REBAR) AT 30.00 FEET, A TOTAL DISTANCE OF 915.11 FEET TO AN EXISTING IRON PIN (5/8 INCH REBAR); THENCE SOUTH 53 DEGREES 39 MINUTES 34 SECONDS EAST 157.65 FEET TO AN EXISTING IRON PIN (5/8 INCH REBAR); THENCE NORTH 36 DEGREES 20 MINUTES 38 SECONDS EAST 90.78 FEET TO AN EXISTING IRON PIN (5/8 INCH REBAR); THENCE NORTH 53 DEGREES 39 MINUTES 34 SECONDS WEST 150.24 FEET TO AN EXISTING IRON PIN (5/8 INCH REBAR); THENCE LEAVING SAID LITTLE TRACT AND THRU THE GRANTOR'S TRACT NORTH 52 DEGREES 16 MINUTES 40 SECONDS EAST 304.04 FEET TO AN IRON PIN SET; THENCE NORTH 80 DEGREES 05 MINUTES 20 SECONDS EAST 1320.67 FEET TO AN IRON PIN SET ON THE WEST LINE OF A TRACT CONVEYED TO L. AND J. LITTLE AS RECORDED IN DEED VOLUME 522, PAGE 227 OF THE SAID COUNTY RECORDS; THENCE WITH THE WEST LINE OF SAID LITTLE TRACT SOUTH 07 DEGREES 31 MINUTES 42 SECONDS EAST, PASSING AN IRON PIN SET AT 862.89 FEET, A TOTAL DISTANCE OF 893.76 FEET TO A POINT IN THE CENTER OF STATE ROUTE 208; THENCE WITH THE CENTER OF STATE ROUTE 208 THE NEXT THIRTEEN COURSES AND DISTANCES:

- 1) SOUTH 51 DEGREES 53 MINUTES 48 SECONDS WEST 50.30 FEET TO A POINT,
- 2) SOUTH 43 DEGREES 45 MINUTES 08 SECONDS WEST 52.38 FEET TO A POINT,
- 3) SOUTH 34 DEGREES 31 MINUTES 02 SECONDS WEST 51.36 FEET TO A POINT,
- 4) SOUTH 26 DEGREES 35 MINUTES 30 SECONDS WEST 63.03 FEET TO A POINT,
- 5) SOUTH 22 DEGREES 43 MINUTES 41 SECONDS WEST 198.18 FEET TO A POINT,
- 6) SOUTH 22 DEGREES 43 MINUTES 14 SECONDS WEST 54.52 FEET TO A POINT,
- 7) SOUTH 28 DEGREES 17 MINUTES 42 SECONDS WEST 48.47 FEET TO A POINT,
- 8) SOUTH 35 DEGREES 02 MINUTES 57 SECONDS WEST 49.87 FEET TO A POINT,
- 9) SOUTH 42 DEGREES 13 MINUTES 08 SECONDS WEST 51.53 FEET TO A POINT,
- 10) SOUTH 49 DEGREES 14 MINUTES 50 SECONDS WEST 52.97 FEET TO A POINT,
- 11) SOUTH 56 DEGREES 43 MINUTES 24 SECONDS WEST 51.82 FEET TO A POINT,
- 12) SOUTH 61 DEGREES 37 MINUTES 47 SECONDS WEST 53.37 FEET TO A POINT,

13) SOUTH 64 DEGREES 13 MINUTES 22 SECONDS WEST 80.73 FEET TO THE PLACE OF BEGINNING.
CONTAINING 47.225 MORE OR LESS ACRES, SUBJECT TO ALL LEGAL ROAD RIGHT-OF-WAY OF STATE ROUTE 208 AND ALL OTHER APPLICABLE EASEMENTS.

ALSO SUBJECT TO A 40 FOOT INGRESS AND EGRESS EASEMENT FOR AGRICULTURAL PURPOSES ONLY:

BEING A PART OF A TRACT CONVEYED TO W. KREBS AND B. LENTZ CONVEYED IN DEED VOLUME 840, PAGE 230 OF THE MUSKINGUM COUNTY DEED RECORDS; SITUATED IN THE 2ND QUARTER OF THE THIRD TOWNSHIP, RANGE 7, OF THE UNITED STATES MILITARY LANDS, MADISON TOWNSHIP, MUSKINGUM COUNTY, OHIO AND BEING FURTHER DESCRIBED AS FOLLOWS; COMMENCING AT AN EXISTING IRON PIN (5/8 INCH REBAR) AT THE NORTHEAST CORNER OF LOT NUMBER 2 OF A SURVEY BY CHARLES ROBERTS IN 1814 AS RECORDED IN DEED BOOK "D", PAGE 275 OF THE SAID COUNTY RECORDS; THENCE WITH THE SOUTH LINE OF SAID QUARTER TOWNSHIP TWO NORTH 89 DEGREES 21 MINUTES 31 SECONDS WEST 415.80 FEET TO A POINT IN THE CENTER OF STATE ROUTE 208; THENCE WITH THE CENTER OF STATE ROUTE 208 THE NEXT THIRTEEN COURSES AND DISTANCES:

- 1) NORTH 64 DEGREES 13 MINUTES 22 SECONDS EAST 80.73 FEET TO A POINT,
 - 2) NORTH 61 DEGREES 37 MINUTES 47 SECONDS EAST 53.37 FEET TO A POINT,
 - 3) NORTH 56 DEGREES 43 MINUTES 24 SECONDS EAST 51.82 FEET TO A POINT,
 - 4) NORTH 49 DEGREES 14 MINUTES 50 SECONDS EAST 52.97 FEET TO A POINT,
 - 5) NORTH 42 DEGREES 13 MINUTES 08 SECONDS EAST 51.53 FEET TO A POINT,
 - 6) NORTH 35 DEGREES 02 MINUTES 57 SECONDS EAST 49.87 FEET TO A POINT,
 - 7) NORTH 28 DEGREES 17 MINUTES 42 SECONDS EAST 48.47 FEET TO A POINT,
 - 8) NORTH 22 DEGREES 43 MINUTES 14 SECONDS EAST 54.52 FEET TO A POINT,
 - 9) NORTH 22 DEGREES 43 MINUTES 41 SECONDS EAST 198.18 FEET TO A POINT,
 - 10) NORTH 26 DEGREES 35 MINUTES 30 SECONDS EAST 63.03 FEET TO A POINT,
 - 11) NORTH 34 DEGREES 31 MINUTES 02 SECONDS EAST 51.36 FEET TO A POINT,
 - 12) NORTH 43 DEGREES 45 MINUTES 08 SECONDS EAST 52.36 FEET TO A POINT,
 - 13) NORTH 51 DEGREES 53 MINUTES 48 SECONDS EAST 3.84 FEET TO A POINT,
- SAID POINT BEING THE PLACE OF BEGINNING OF THE EASEMENT HEREIN INTENDED TO BE DESCRIBED; THENCE LEAVING SAID ROAD NORTH 07 DEGREES 31 MINUTES 42 SECONDS WEST 715.73 FEET TO A POINT ON THE NORTH LINE OF THE ABOVE DESCRIBED 47.225 MORE OR LESS ACRE TRACT; THENCE WITH SAID NORTH LINE NORTH 80 DEGREES 05 MINUTES 20 SECONDS EAST 40.03 FEET TO AN IRON PIN SET ON THE WEST LINE OF A TRACT CONVEYED TO L. AND J. LITTLE AS RECORDED IN DEED VOLUME 522, PAGE 227 OF THE SAID COUNTY RECORDS; THENCE WITH THE WEST LINE OF SAID LITTLE TRACT SOUTH 07 DEGREES 31 MINUTES 42 SECONDS EAST, PASSING AN IRON PIN SET AT 662.89 FEET, A TOTAL DISTANCE OF 663.76 FEET TO A POINT IN THE CENTER OF STATE ROUTE 208; THENCE WITH THE CENTER OF STATE ROUTE 208 SOUTH 51 DEGREES 53 MINUTES 48 SECONDS WEST 46.48 FEET TO THE PLACE OF BEGINNING.

ALL IRON PINS SET ARE 5/8 INCH X 30 INCH REBAR WITH PLASTIC IDENTIFICATION CAP.

BEARINGS ARE BASED ON THE EAST LINE OF THE PREVIOUS SURVEY OF 5.204 MORE OR LESS ACRES AS SURVEYED BY W. J. BIEDENBACH, AND DATED OCTOBER OF 1986.

78-20-02-01 (PART)

**OFFICE COPY
NOT RECORDABLE**

DESCRIPTION APPROVED
FOR AUDITORS TRANSFER

BY

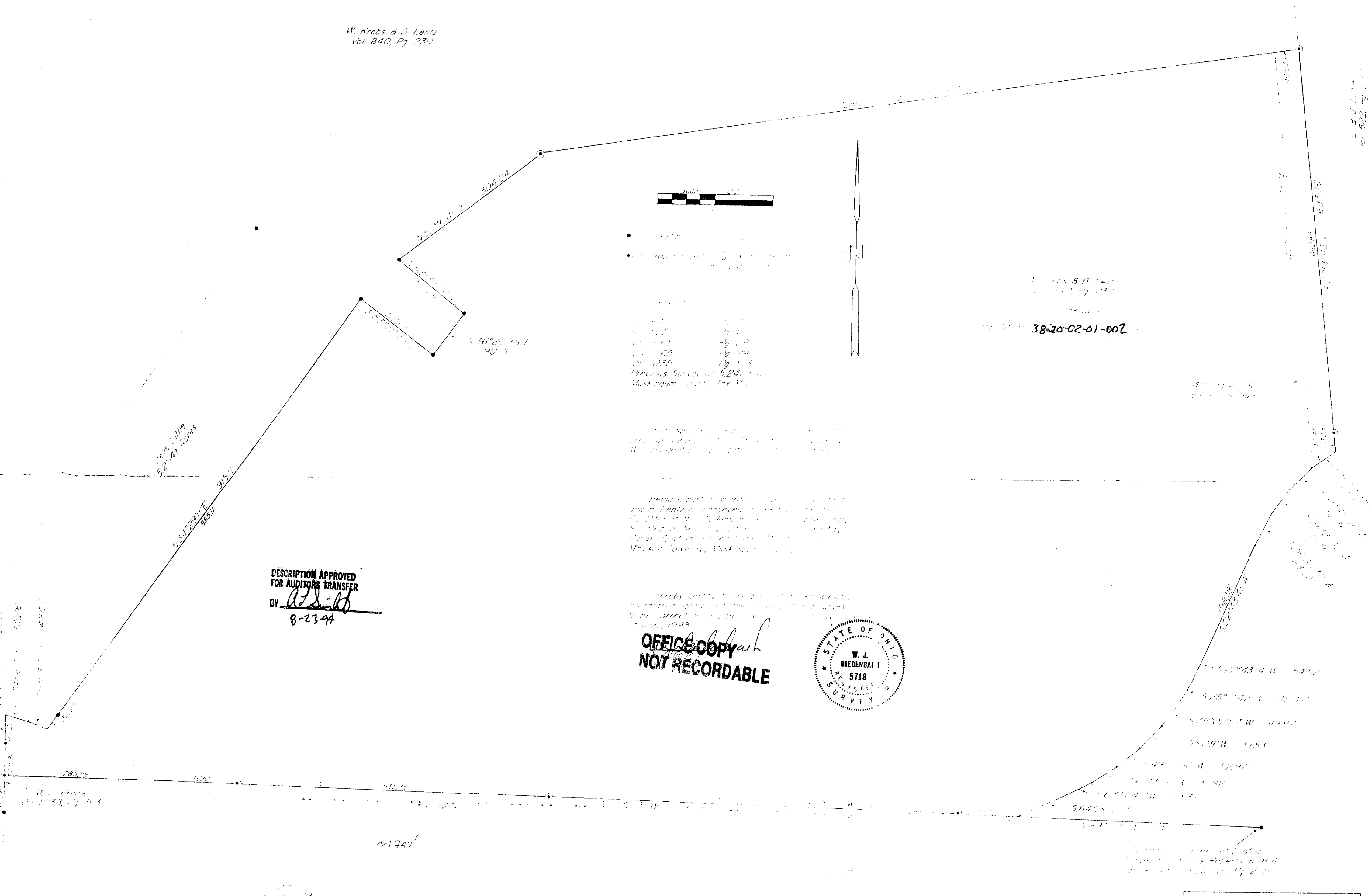
A. J. Smith

8-23-94

47,22 ac.

N/A

W. Krebs & B. Lertz
Vol. 840, Pg. 230



- [unclear]
- [unclear]

1. [unclear]
 2. [unclear]
 3. [unclear]
 4. [unclear]
 5. [unclear]
 6. [unclear]
 7. [unclear]
 8. [unclear]
 9. [unclear]
 10. [unclear]
 11. [unclear]
 12. [unclear]
 13. [unclear]
 14. [unclear]
 15. [unclear]
 16. [unclear]
 17. [unclear]
 18. [unclear]
 19. [unclear]
 20. [unclear]

W. Krebs & B. Lertz
 Vol. 840, Pg. 230
 38-70-02-01-002

DESCRIPTION APPROVED
 FOR AUDITORS TRANSFER
 BY *[Signature]*
 8-23-94

I hereby certify that the foregoing is a true and correct copy of the original survey as shown to me by [unclear] on [unclear] day of [unclear], 1994.

**OFFICE COPY
 NOT RECORDABLE**



ALL KEYS MUST BE ASSESSOR
 SUPPLEMENTARY MAPPING
 DATE: [unclear]
 BY: [unclear]

DATE: 5-11-95	BY: [unclear]
DATE: 1-10-95	BY: [unclear]
DATE: 4-11-95	BY: [unclear]